



## 9263 Ravenna Rd.

Twinsburg, OH

### Property Features

- Available Space: Unit A-10 - 1,864 SF
  - Office: 904 SF
  - Warehouse: 960 SF
- Construction: Concrete Block
- Lighting: Mixed
- Parking: Ample Spaces in Front and Rear
- Pro Business Community
- On Highly Trafficked Ravenna Rd.



**Joe Hauman, CCIM**

440 591 3723 • [joe.hauman@naipvc.com](mailto:joe.hauman@naipvc.com)

**Noah Broadbent, CCIM**

440 708 8578 • [noah.broadbent@naipvc.com](mailto:noah.broadbent@naipvc.com)

NO WARRANTY OR REPRESENTATION, EXPRESS OR IMPLIED, IS MADE AS TO THE ACCURACY OF THE INFORMATION CONTAINED HEREIN, AND THE SAME IS SUBMITTED SUBJECT TO ERRORS, OMISSIONS, CHANGE OF PRICE, RENTAL OR OTHER CONDITIONS, PRIOR SALE, LEASE OR FINANCING, OR WITHDRAWAL WITHOUT NOTICE, AND OF ANY SPECIAL LISTING CONDITIONS IMPOSED BY OUR PRINCIPALS NO WARRANTIES OR REPRESENTATIONS ARE MADE AS TO THE CONDITION OF THE PROPERTY OR ANY HAZARDS CONTAINED THEREIN ARE ANY TO BE IMPLIED.

6060 Rockside Woods Blvd. | Suite 402  
Independence, Ohio 44131  
+1 216 831 3310  
[naipvc.com](http://naipvc.com)



9263 Ravenna Rd.  
Twinsburg, OH

For Lease  
Photos



**Joe Hauman, CCIM**

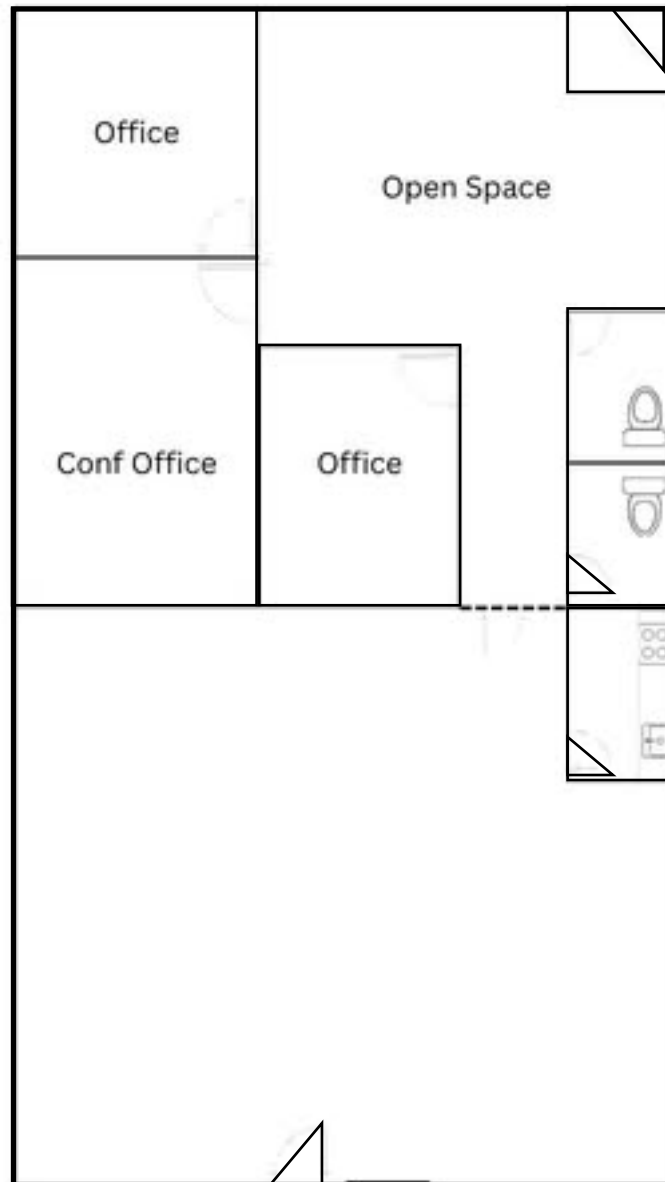
440 591 3723 • [joe.hauman@naipvc.com](mailto:joe.hauman@naipvc.com)

**Noah Broadbent, CCIM**

440 708 8578 • [noah.broadbent@naipvc.com](mailto:noah.broadbent@naipvc.com)

9263 Ravenna Rd.  
Twinsburg, OH

**For Lease**  
Floor Plan



**Joe Hauman, CCIM**

440 591 3723 • [joe.hauman@naipvc.com](mailto:joe.hauman@naipvc.com)

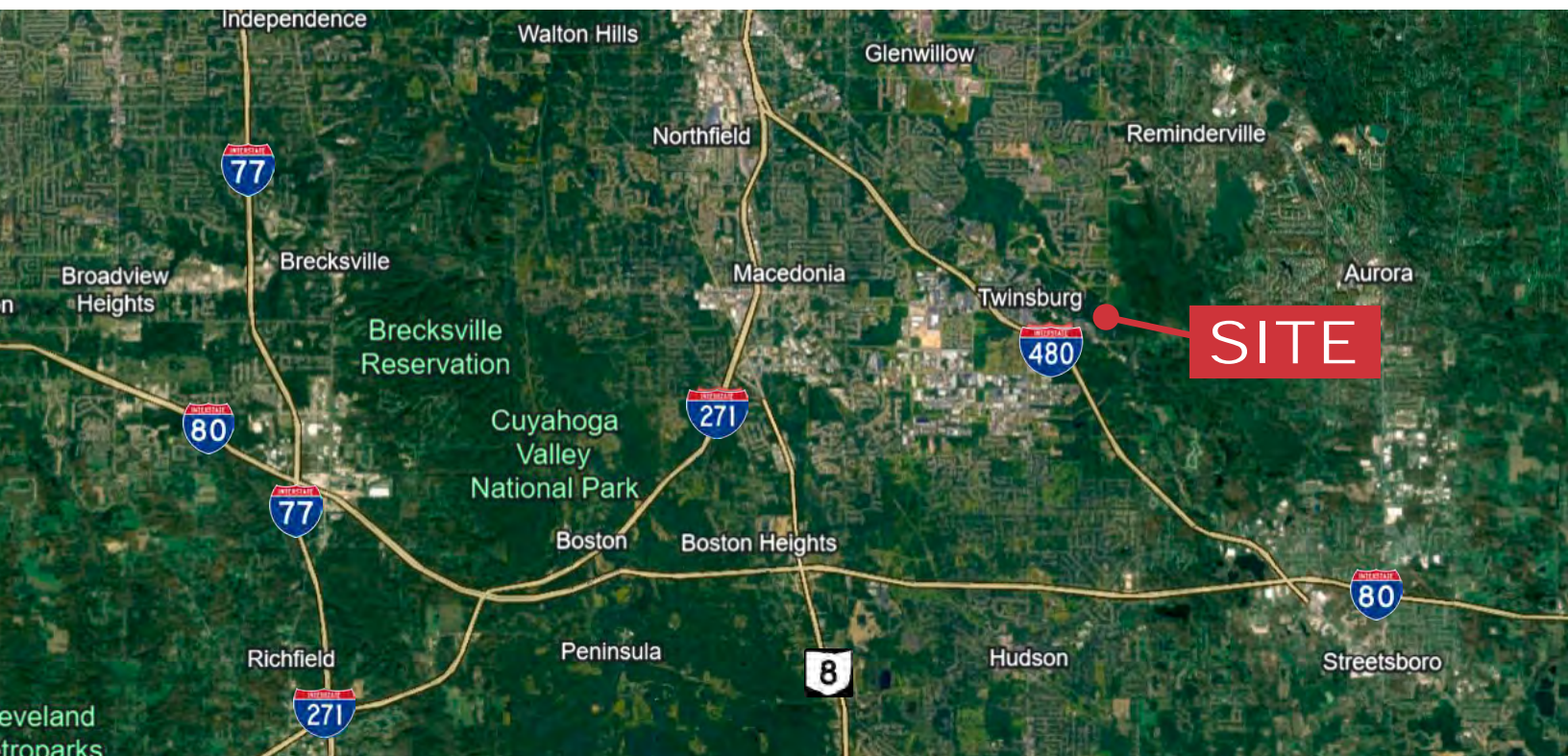
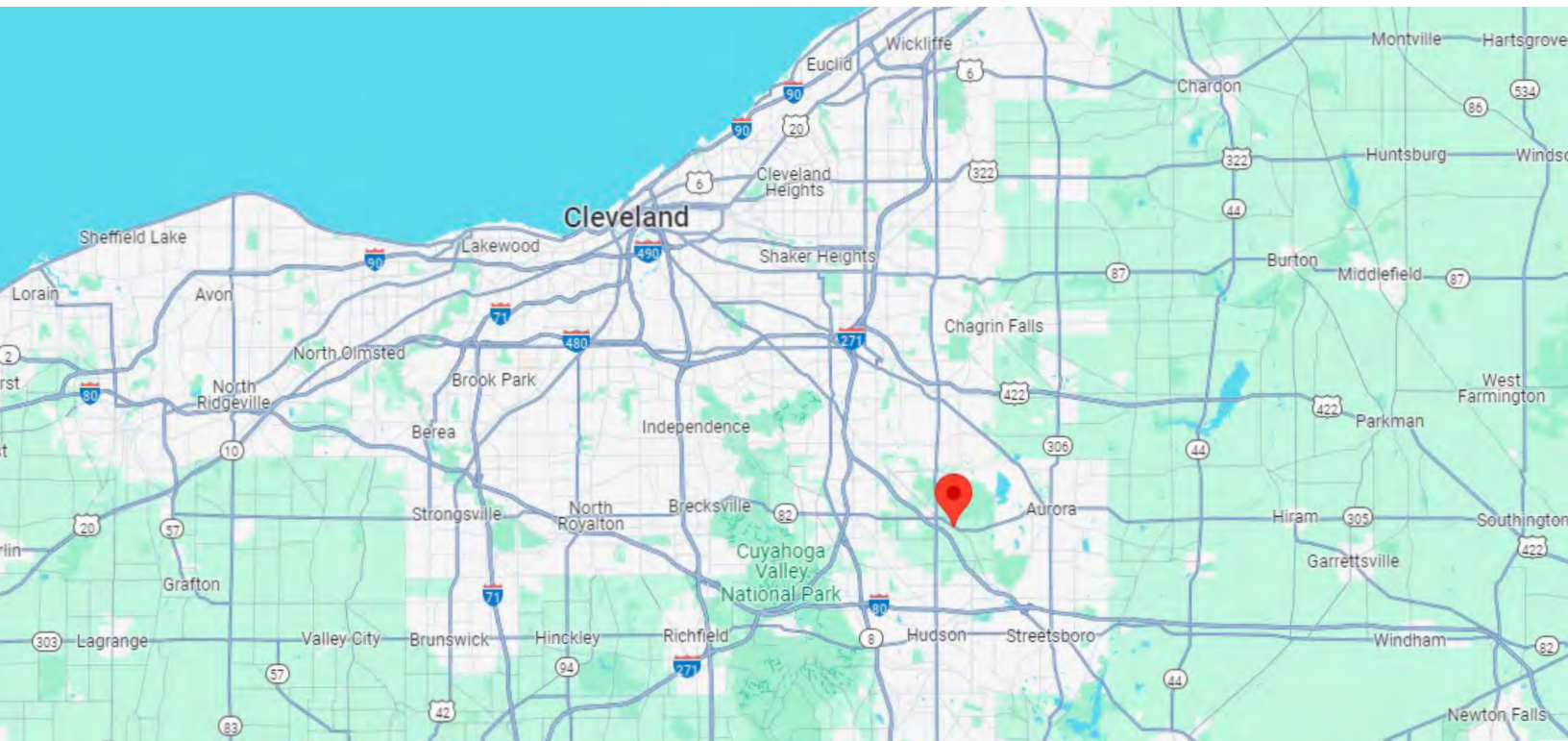
**Noah Broadbent, CCIM**

440 708 8578 • [noah.broadbent@naipvc.com](mailto:noah.broadbent@naipvc.com)



9329 Ravenna Rd.  
Twinsburg, OH

For Lease  
Location



**Joe Hauman, CCIM**

440 591 3723 • joe.hauman@naipvc.com

**Noah Broadbent, CCIM**

440 708 8578 • noah.broadbent@naipvc.com

## BUILDING INFORMATION SHEET

<b>LOCATION:</b>	9263 Ravenna Rd Unit A-10, Twinsburg, Oh 44087
<b>AVAILABLE SPACE:</b>	1,864 SF
<b>WAREHOUSE AREA:</b>	960 SF
<b>OFFICE AREA:</b>	904 SF
<b>CONSTRUCTION:</b>	Brick Block
<b>ZONING:</b>	C- Commercial Office Condo/ Light Industrial
<b>CEILING HEIGHT:</b>	14 Ft
<b>DRIVE-IN DOORS:</b>	One- 10x12
<b>PARKING:</b>	Ample- Shared
<b>HEAT:</b>	HVAC in office and gas heating unit in warehouse
<b>LIGHTING:</b>	Mixed
<b>ELECTRIC POWER:</b>	240 Volts/ 3 Phase
<b>LEASE RATE:</b>	\$1,700 Month
<b>COMMENTS:</b>	Unit renovated with new carpet in 2024.
<b>CONTACT:</b>	Joe Hauman/440-591-3723/ <a href="mailto:Joe.hauman@naipvc.com">Joe.hauman@naipvc.com</a> Noah Broadbent/ 440-708-8578/ <a href="mailto:Noah.broadbent@naipvc.com">Noah.broadbent@naipvc.com</a>

This information has been secured from sources we believe to be reliable, but we make no representations or warranties, expressed or implied, as to the accuracy of the information. References to square footage or age are approximate. Buyer must verify the information and bears all risk for any inaccuracies.