

# FOR LEASE

## SSM St. Joseph Hospital Campus

### Medical Office Building 1

330 First Capitol Dr., St. Charles, MO



### Medical Office Building 2

400 First Capitol Dr., St. Charles, MO

#### HOSPITAL SERVICES INCLUDE:

- Maternity Services/ Birthsuitses
- Prostate Health
- Heart & Vascular Care
- Breast Center/ Mammography
- Emergency & Trauma Services
- Pregnancy & Baby
- Endoscopy & Gastroenterology
- Neurosciences
- Cancer Care

#### Leasing Information, call for details:

Joseph Lampe, Director—Healthcare  
314-728-6007 [jlampe@ccr-stl.com](mailto:jlampe@ccr-stl.com)  
Jared Stone, Associate  
314-604-8466 [jstone@ccr-stl.com](mailto:jstone@ccr-stl.com)

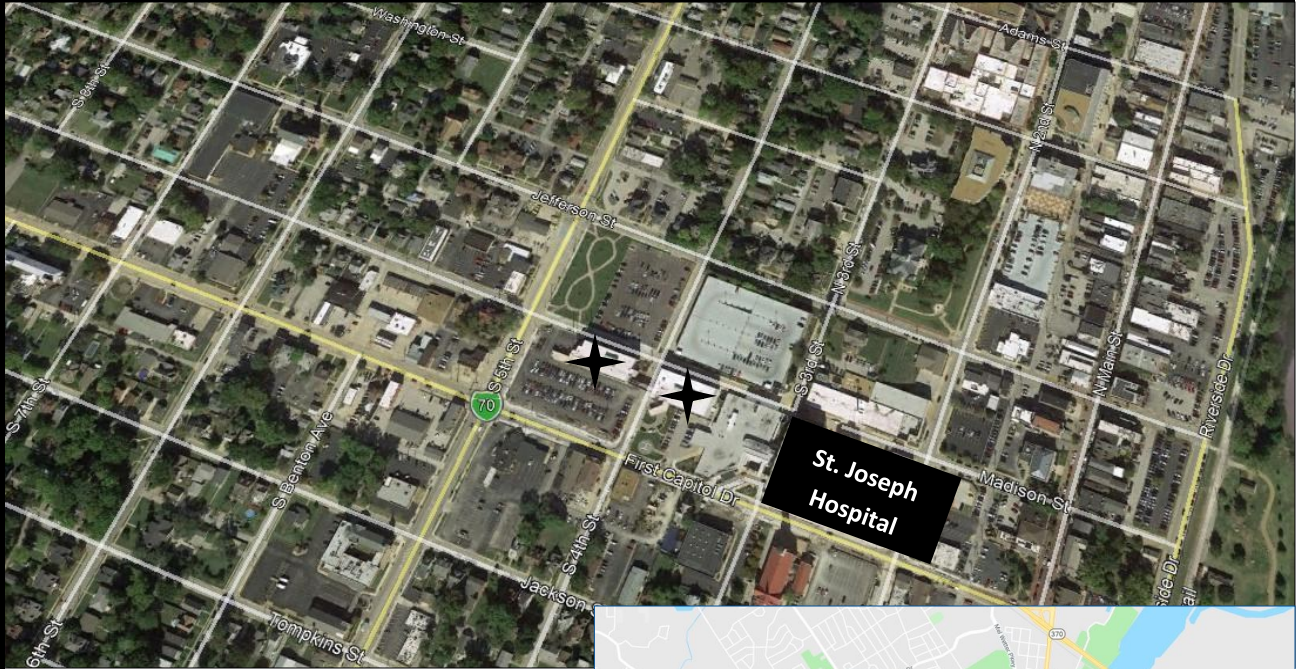
**Cornerstone**  
Commercial Realty, Inc.  
8000 Maryland Avenue, St. Louis, MO 63105

#### BUILDING AMENITIES:

- Located on the campus of SSM St. Joseph Hospital
- Connected to the hospital via corridor
- Dedicated Physician parking
- Covered patient drop off
- On-site Pharmacy, ATM, Café and Gift Shop
- Fitness Center
- Physician's Lounge
- Complementary mix of healthcare providers
- Convenient location, easy access to I-70

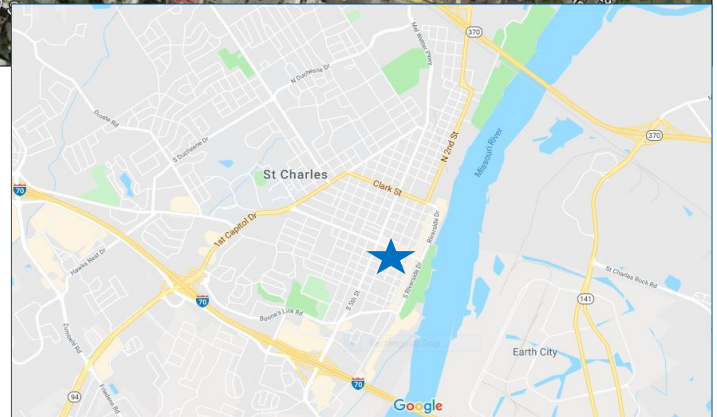
# SSM St. Joseph Campus

**FOR LEASE**



**330 First Capitol Dr.**

SUITE	SF	TYPE
270	1,756	FS
310	2,012	FS
390	2,036	FS



**400 First Capitol Dr.**

SUITE	SF	TYPE	
409	1,245	FS	
307	2,608	FS	Combine Can
305	1,989	FS	

**Leasing Information Details:**

Joseph Lampe, Director—Healthcare  
 314-728-6007 [jlampe@ccr-stl.com](mailto:jlampe@ccr-stl.com)  
 Jared Stone, Associate  
 314-604-8466 [jstone@ccr-stl.com](mailto:jstone@ccr-stl.com)

**Owned by:**

