

# AVAILABLE SPACE

111 Hundertmark Road | Chaska, MN 55318



**Steve Brown**

Principal

(952) 525-3335

[Steve.Brown@ForteREP.com](mailto:Steve.Brown@ForteREP.com)

[www.ForteREP.com](http://www.ForteREP.com)



**FORTE**

REAL ESTATE PARTNERS

# SPACE FEATURES

111 Hudertmark Road | Chaska, Minnesota 55318

## Building Information

Building Size 215,552 SF

Year Built 2002

Floors 4

## Terms

Spaces Available

- Suite 100 - 1,425 RSF
- Suite 330 - 2,745 RSF
- Suite 430 - 1,960 RSF
- Suite 450 - 2,160 RSF
- Suite 460 - 3,735 RSF
- Suite 470 - 2,547 RSF
- Suite 480 - 2,790 RSF - Timeshare

Tax & Cam

Ops: \$10.57  
Tax: \$5.70

Total: \$16.27



### Steve Brown

Principal  
(952) 525-3335  
Steve.Brown@ForteREP.com  
www.ForteREP.com



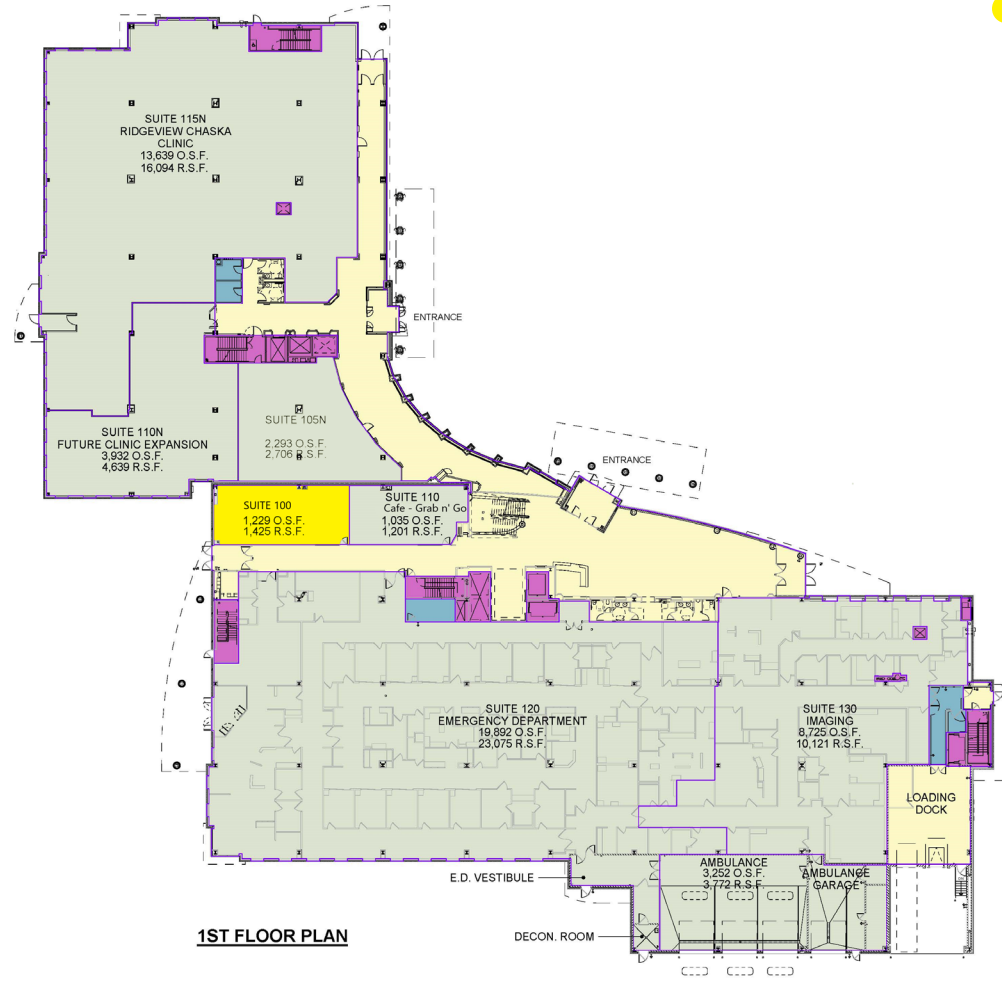
**FORTE**  
REAL ESTATE PARTNERS

# FIRST FLOOR

111 Hudertmark Road | Chaska, Minnesota 55318

First Floor

● Suite 100 - 1,425 RSF



**Steve Brown**

Principal

(952) 525-3335

Steve.Brown@ForteREP.com

www.ForteREP.com



**FORTE**

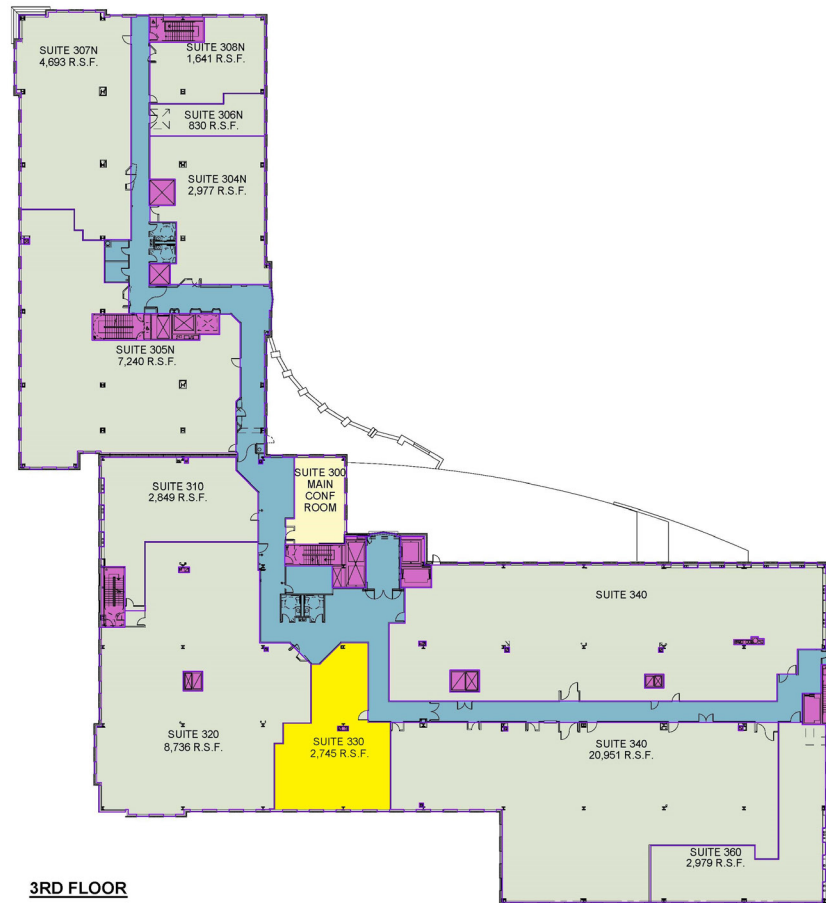
REAL ESTATE PARTNERS

# THIRD FLOOR

111 Hudertmark Road | Chaska, Minnesota 55318

Third Floor

● Suite 330 - 2,745 SF



## Steve Brown

Principal

(952) 525-3335

Steve.Brown@ForteREP.com

www.ForteREP.com



**FORTE**

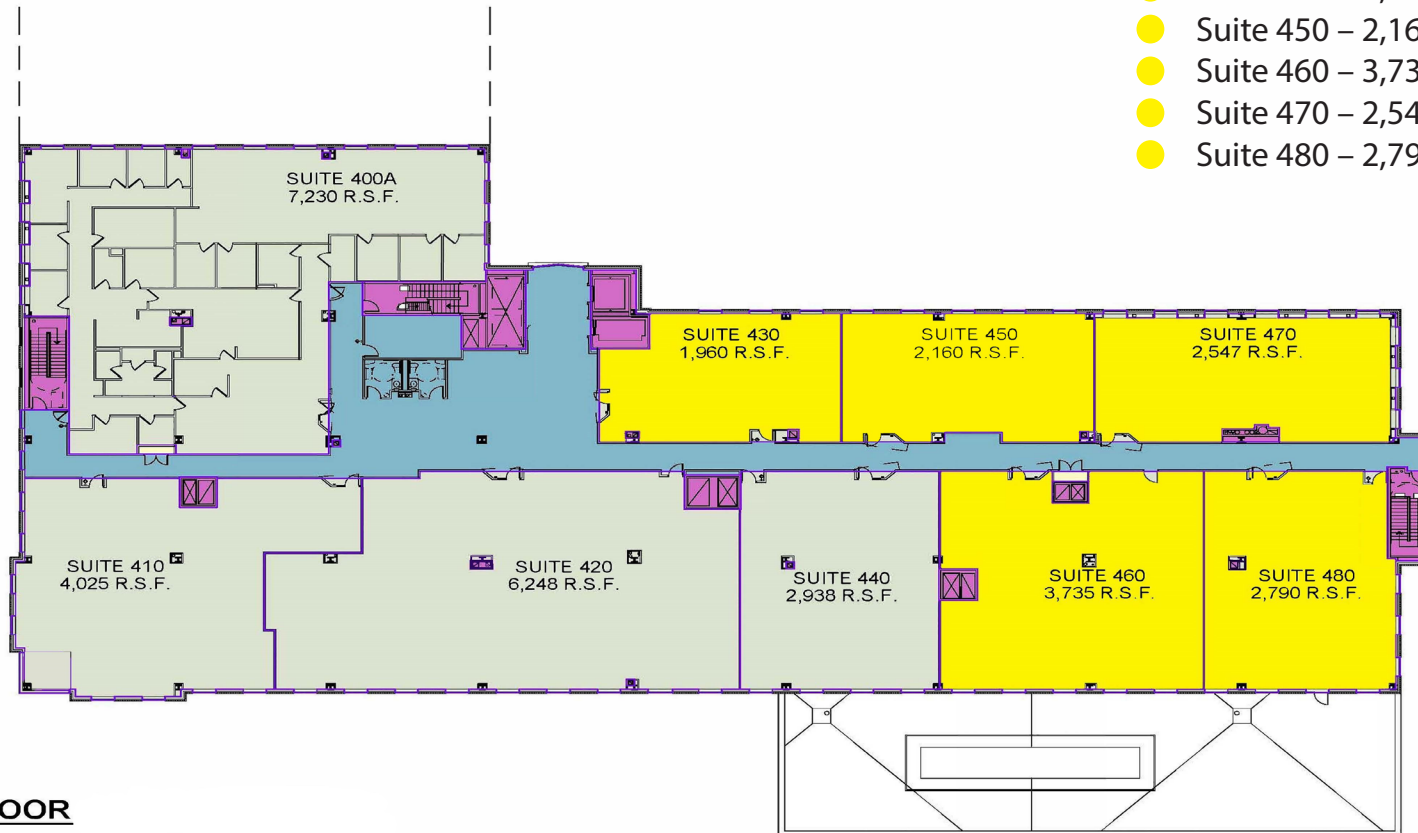
REAL ESTATE PARTNERS

# FOURTH FLOOR

111 Hudertmark Road | Chaska, Minnesota 55318

## Fourth Floor

- Suite 430 – 1,960 RSF
- Suite 450 – 2,160 RSF
- Suite 460 – 3,735 RSF
- Suite 470 – 2,547 RSF
- Suite 480 – 2,790 RSF - Timeshare Suite



**4TH FLOOR**

## Steve Brown

Principal

(952) 525-3335

Steve.Brown@ForteREP.com

www.ForteREP.com

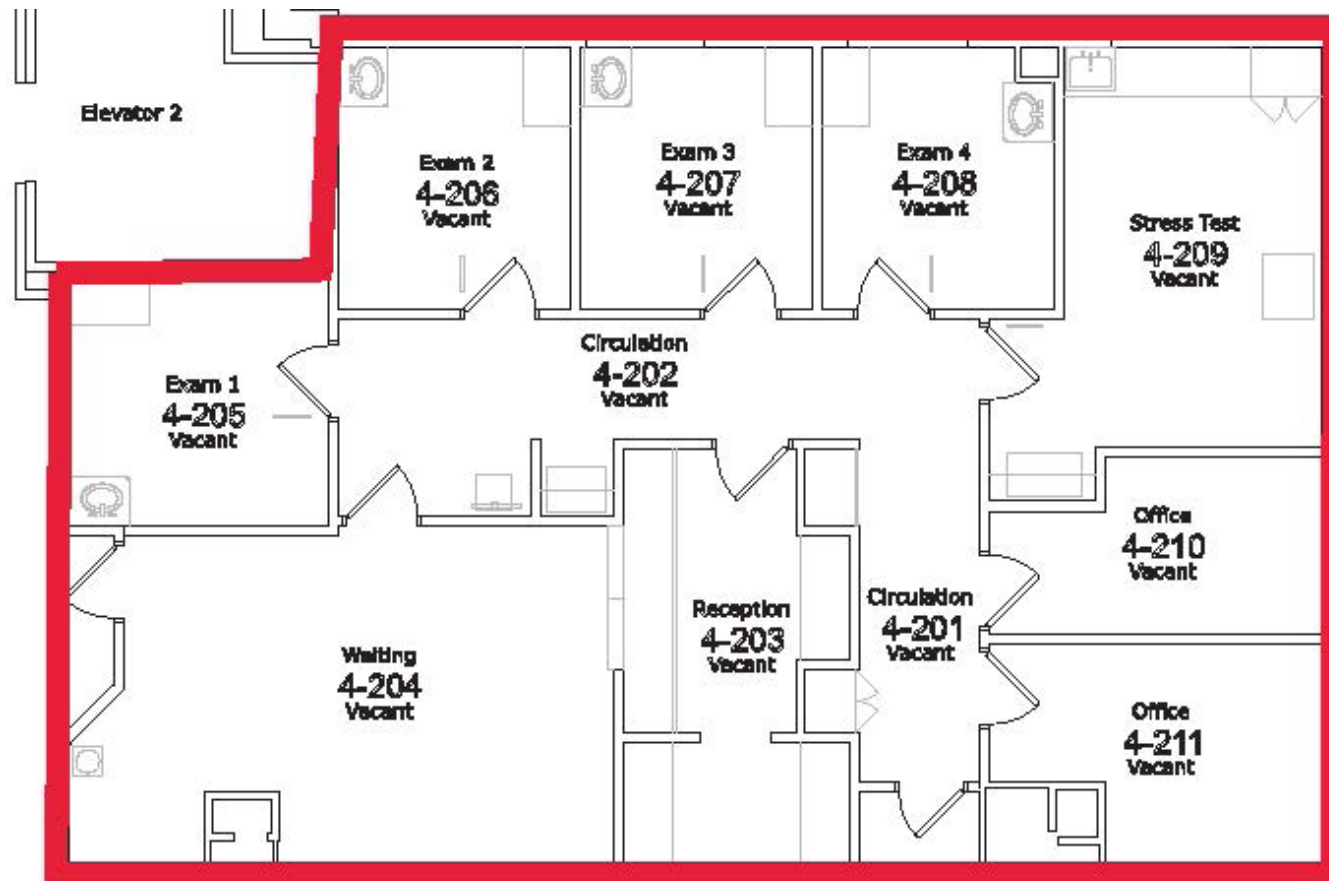


**FORTE**

REAL ESTATE PARTNERS

# FOURTH FLOOR - SUITE 430 - 1,960 RSF

111 Hudertmark Road | Chaska, Minnesota 55318



## Steve Brown

Principal

(952) 525-3335

[Steve.Brown@ForteREP.com](mailto:Steve.Brown@ForteREP.com)

[www.ForteREP.com](http://www.ForteREP.com)

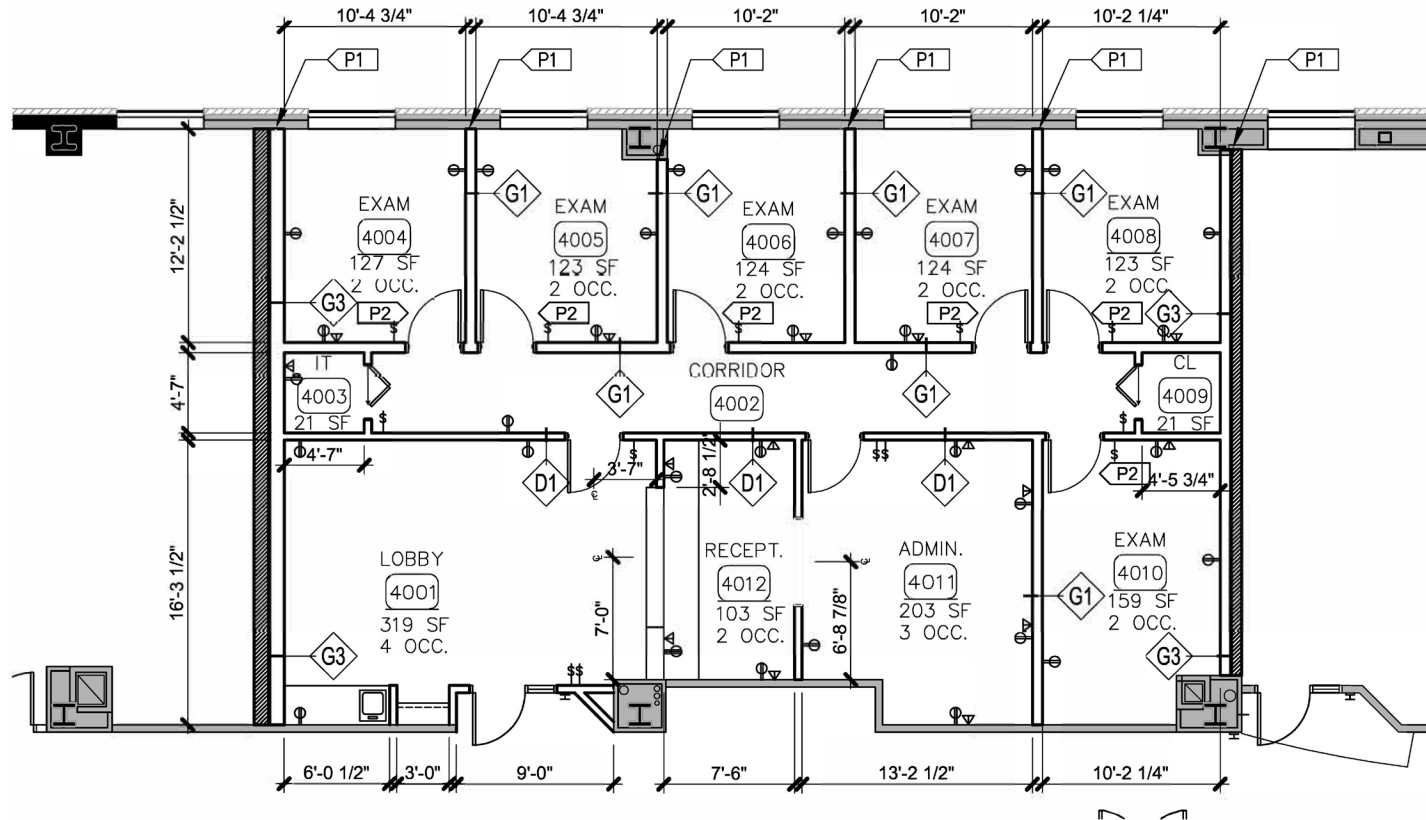


**FORTE**

REAL ESTATE PARTNERS

# FOURTH FLOOR - SUITE 450 - 2,160 RSF

111 Hudertmark Road | Chaska, Minnesota 55318



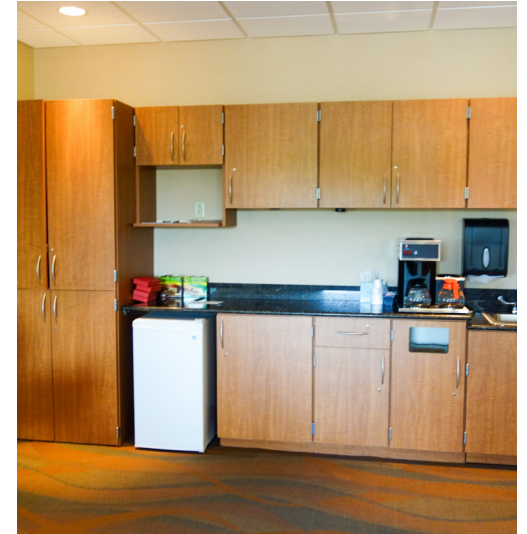
**Steve Brown**  
Principal  
(952) 525-3335  
Steve.Brown@ForteREP.com  
www.ForteREP.com





# SPACE PHOTOS

111 Hudertmark Road | Chaska, Minnesota 55318



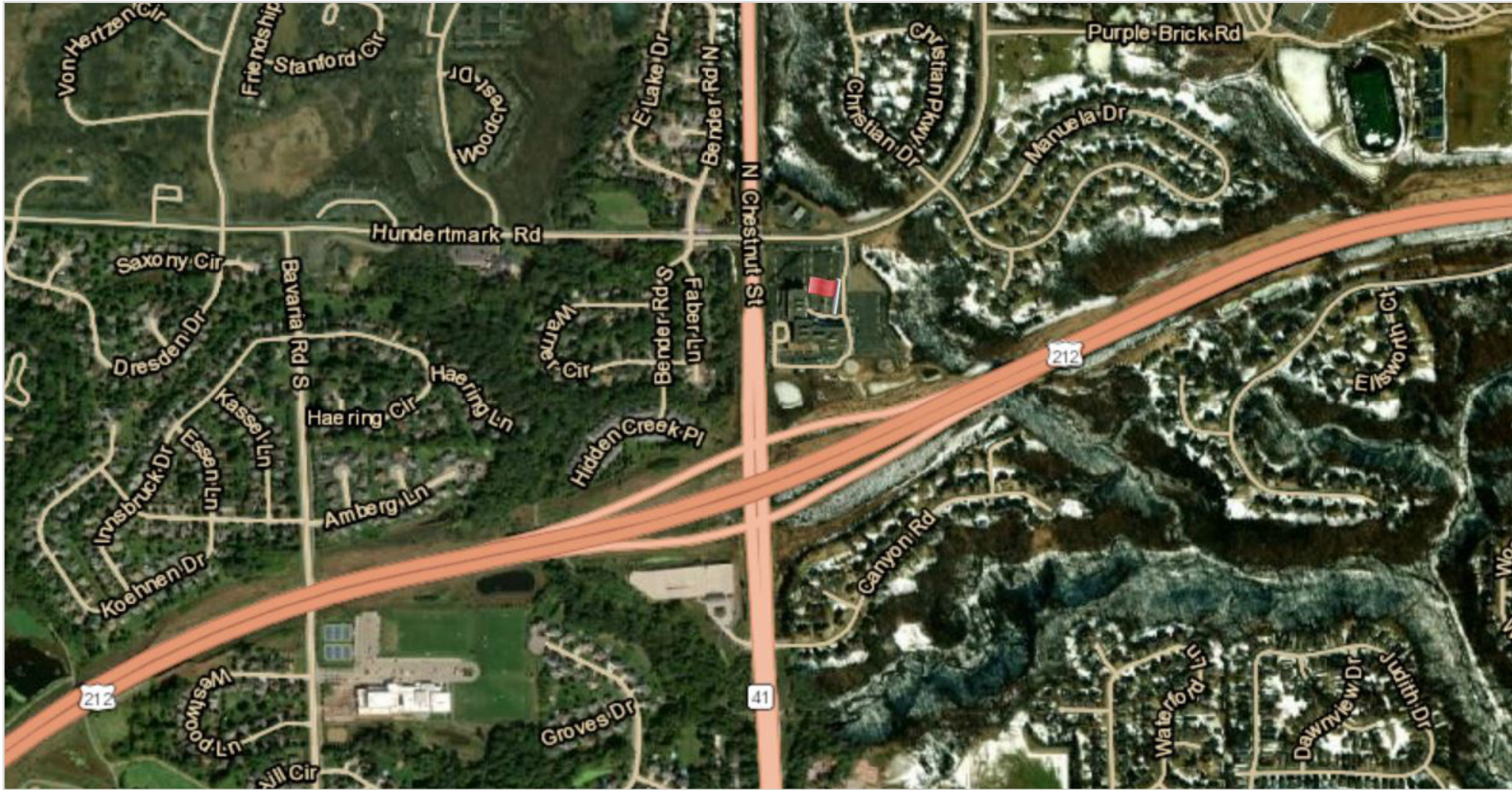
**Steve Brown**  
Principal  
(952) 525-3335  
Steve.Brown@ForteREP.com  
www.ForteREP.com





# AERIAL VIEW

111 Hundertmark Road | Chaska, Minnesota 55318



## Steve Brown

Principal  
(952) 525-3335  
Steve.Brown@ForteREP.com  
www.ForteREP.com

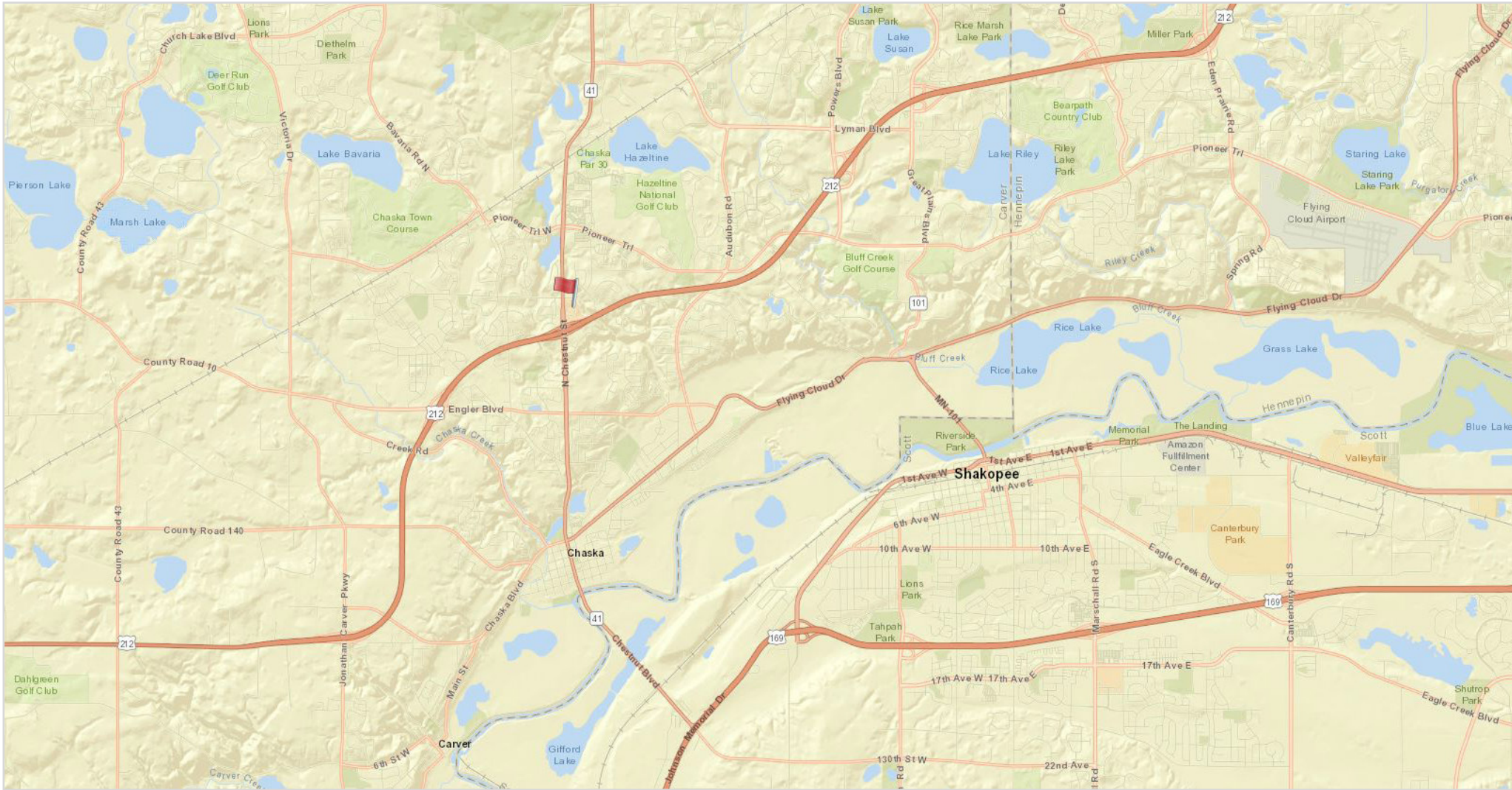


**FORTE**  
REAL ESTATE PARTNERS



# MAP

111 Hudertmark Road | Chaska, Minnesota 55318



**Steve Brown**

Principal

(952) 525-3335

[Steve.Brown@ForteREP.com](mailto:Steve.Brown@ForteREP.com)

[www.ForteREP.com](http://www.ForteREP.com)

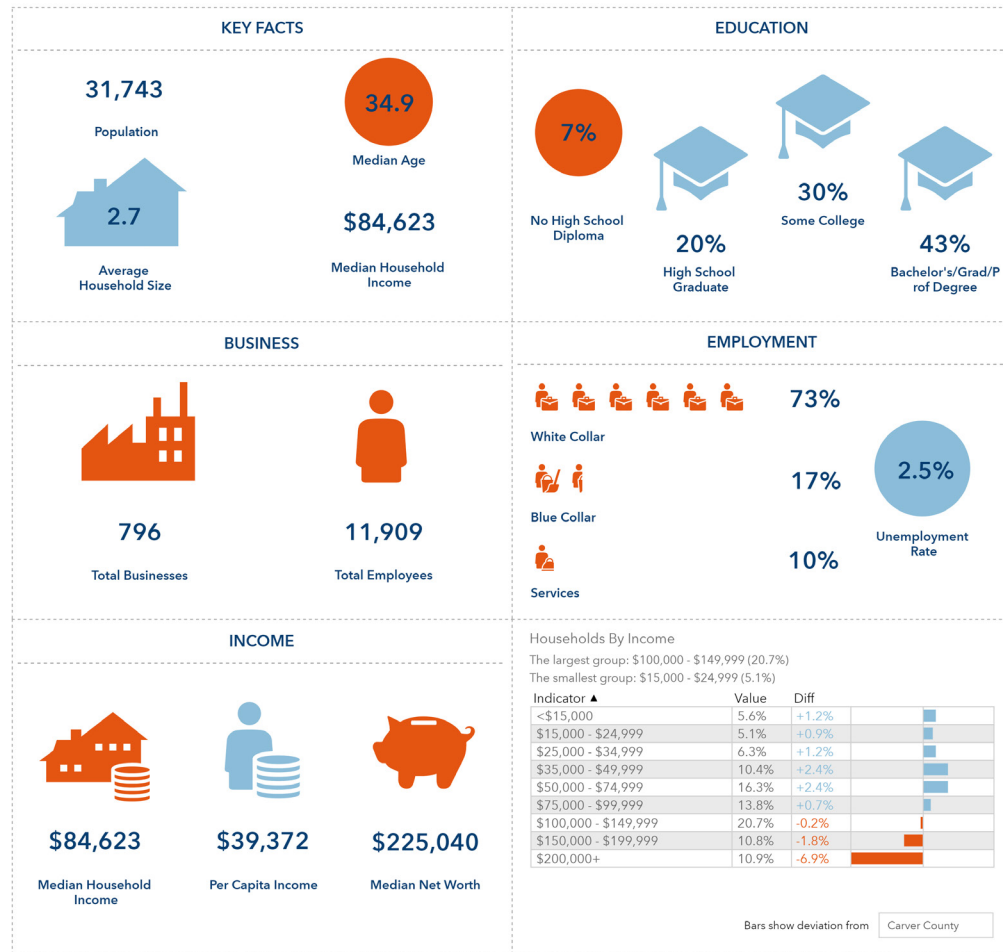


**FORTE**

REAL ESTATE PARTNERS

# DEMOGRAPHICS

111 Hudertmark Road | Chaska, Minnesota 55318



This infographic contains data provided by Esri, Esri and Data Axle. The vintage of the data is 2021, 2026.

#2021 Esri

Page 1 of 1

© 2021 Esri

August 4, 2021

**Steve Brown**

Principal

(952) 525-3335

Steve.Brown@ForteREP.com

www.ForteREP.com



**FORTE**  
REAL ESTATE PARTNERS

# STATISTICS

111 Hudertmark Road | Chaska, Minnesota 55318

## Health Care & Insurance

This infographic provides a set of key demographic and health care indicators. Data sources include: American Community Survey (ACS) 5-year Data, Esri Consumer Spending, and Esri Market Potential data.

Learn more about this data: <https://doc.arcgis.com/en/esri-demographics/data/us-intro.htm>



### Health Care Expenditure



**1,406**  
Medicare Only

**2,825**  
Direct-Purch & Medicare

**1,049**  
Employer & Medicare

**445**  
Medicare & Medicaid

### Population



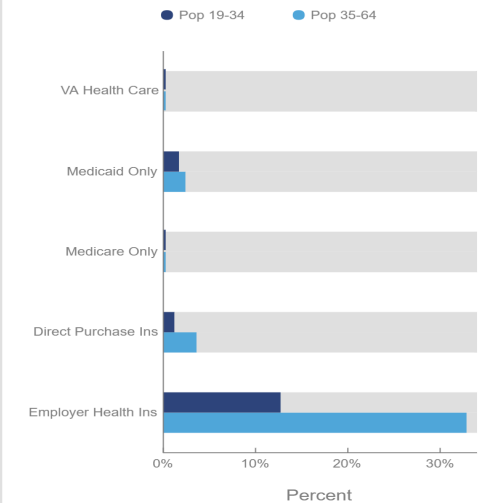
### Exercise (Percent of Adults)



This infographic contains data provided by American Community Survey (ACS), Esri and Bureau of Labor Statistics, Esri and GfK MRI. The vintage of the data is 2014-2018, 2020.  
© 2020 Esri

Health Care (Consumer Spending)	Annual Expenditure
Blue Cross/Blue Shield	\$1,649.9
Medicare Payments	\$531.0
Physician Services	\$406.0
Dental Services	\$575.1
Eyecare Services	\$100.9
Lab Tests/X-rays	\$107.0
Hospital Room & Hospital Service	\$293.2
Convalescent/Nursing Home Care	\$19.7

### Health Insurance Coverage (ACS)



Source: This infographic contains data provided by American Community Survey (ACS), Esri and GfK MRI, Esri and Bureau of Labor Statistics. The vintage of the data is 2020, 2014-2018.

**Steve Brown**

Principal

(952) 525-3335

Steve.Brown@ForteREP.com

www.ForteREP.com



**FORTE**

REAL ESTATE PARTNERS



# CAFE / GRAB N' GO

111 Hudertmark Road | Chaska, Minnesota 55318



**OPENING SOON**

Ridgeview Café at Two Twelve Medical Center will be open  
7AM- 3PM Monday through Friday.

Breakfast served 7AM-10AM, offering cook to order menu items and grab and go for those on the run.

Menu items will include Belgium waffles, omelets, burritos, avocado toast and breakfast sandwiches as well as our famous bacon.

We are partnering with Red Bench Bakery in Chaska to provide fresh baked breads and Danish.

Lunch service begins at 11AM and features a daily hot special, made to order salads, hot and cold sandwiches and burgers. A daily cold entrée salad will be one of many grab and go items available.

Fresh brewed Caribou coffee and your favorite latte, mocha or espresso are available all day. Cold drinks include Coke products and a variety of juices, waters and milks. Fresh baked cookies and bars will help satisfy your sweet tooth.

**Steve Brown**

Principal  
(952) 525-3335  
Steve.Brown@ForteREP.com  
www.ForteREP.com

