

671 N. Berendo St., Los Angeles, CA 90004



A DIVISION OF  
**LEE & ASSOCIATES**

**FOR SUBLEASE**

# PROPERTY DETAILS

---

## Land Size

13,797 SF

## Building Size

13,616 SF

## Available SF

2,237 SF

## Lease Rate

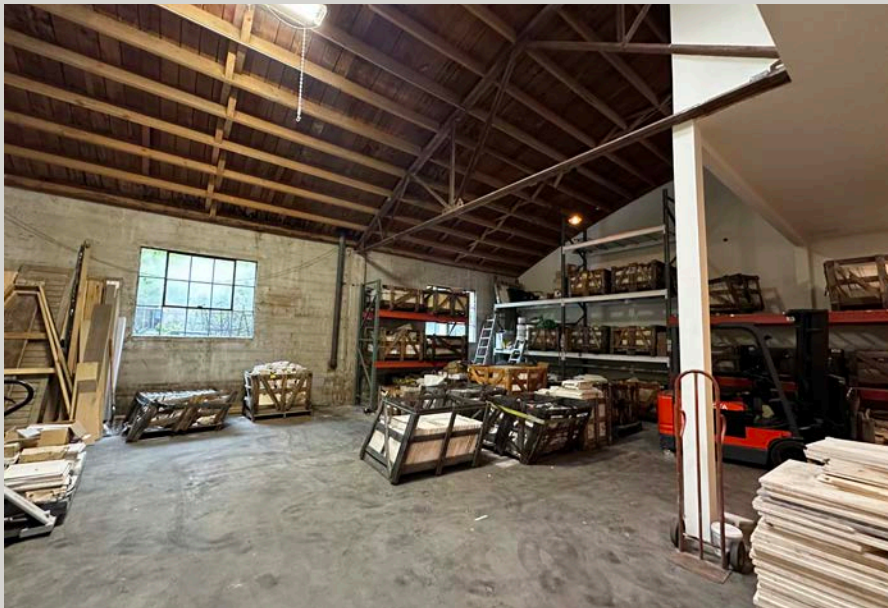
\$2.45/SF, NNN

## Term

Expires March 31, 2026

## Zoning

C2



## Features

- Bow truss ceilings
- Recently renovated
- New kitchen and restrooms with shower
- Central location



# INTERIOR PHOTOS



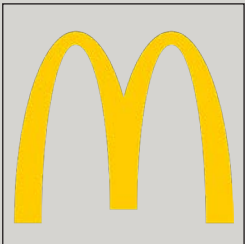
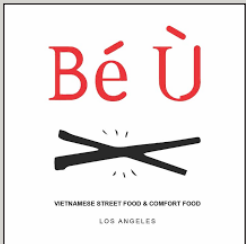


# AERIAL MAP





# NEARBY AMENITIES



# CONTACT

---

## **IAN AMECHE**

PRINCIPAL

[IAMECHE@LEEWESTLA.COM](mailto:IAMECHE@LEEWESTLA.COM)

310.899.2748

DRE: 01976053

1508 17th Street, Santa Monica, CA 90404

310.899.2700

[www.leewestla.com](http://www.leewestla.com) | DRE 01222000

No warranty or representation is made to the accuracy of the foregoing information. Terms of sale or lease are subject to change or withdrawal without notice.



A DIVISION OF  
**LEE &  
ASSOCIATES**

671 N. Berendo St., Los Angeles, CA 90004