

8273 Grand River Ave

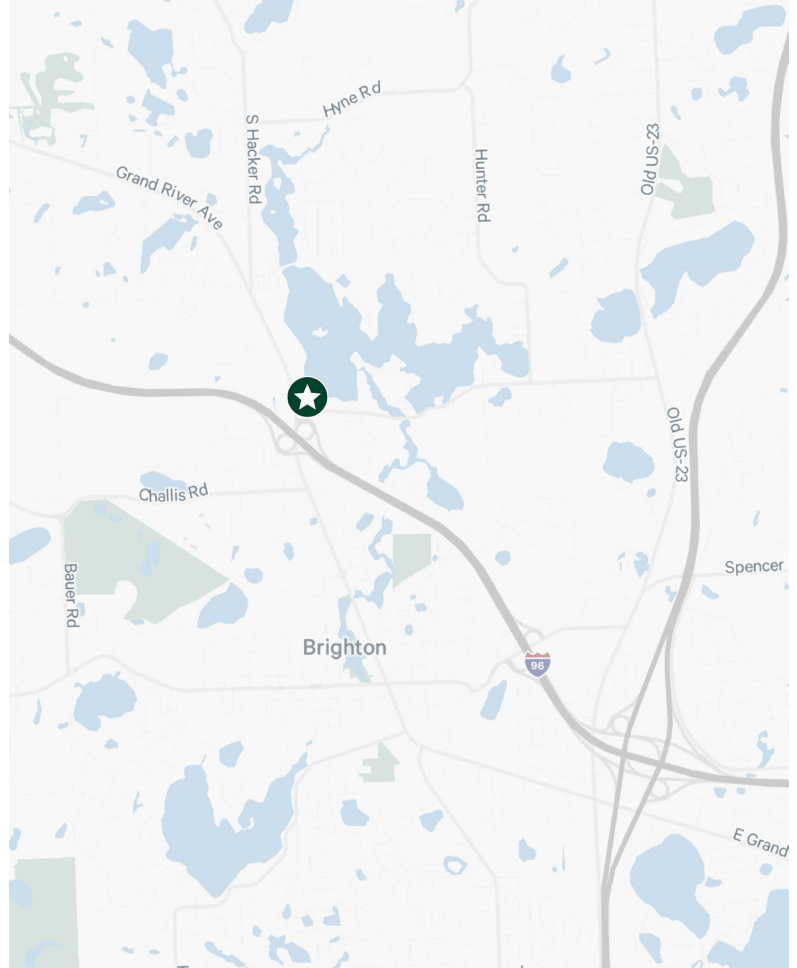
Brighton, MI

Suite 210 | 11,096 SF Immediately Available



Property Features

- + Newer construction modern medical facility built in 2015
- + Up to 11,096 SF of fully furnished medical space overlooking Woodland Lake
- + Space currently occupied by The Core Institute who utilizes this space for orthopedics, physical therapy and spine care.
- + Other Tenants include: The Sports Neurology, Brighton Eye Clinic, IEP Urgent Care, Ross Mortgage & Green Panel
- + Sublandlord will consider a multi-tenant scenario delivering a minimum of ~3,500 SF
- + Glass suite entry located directly off elevator for easy wayfinding and access
- + Dedicated PT space available in the Premises
- + Minutes from Trinity Health Medical Center
- + Immediate access to I-96 right off Grand River Ave providing connectivity to US-23 and I-696
- + Ample parking available
- + Lease Expiration: Contact Broker
- + Lease Rate: Contact Broker



Contact Us

Brandon Carnegie

Vice President

+1 248 767 6069

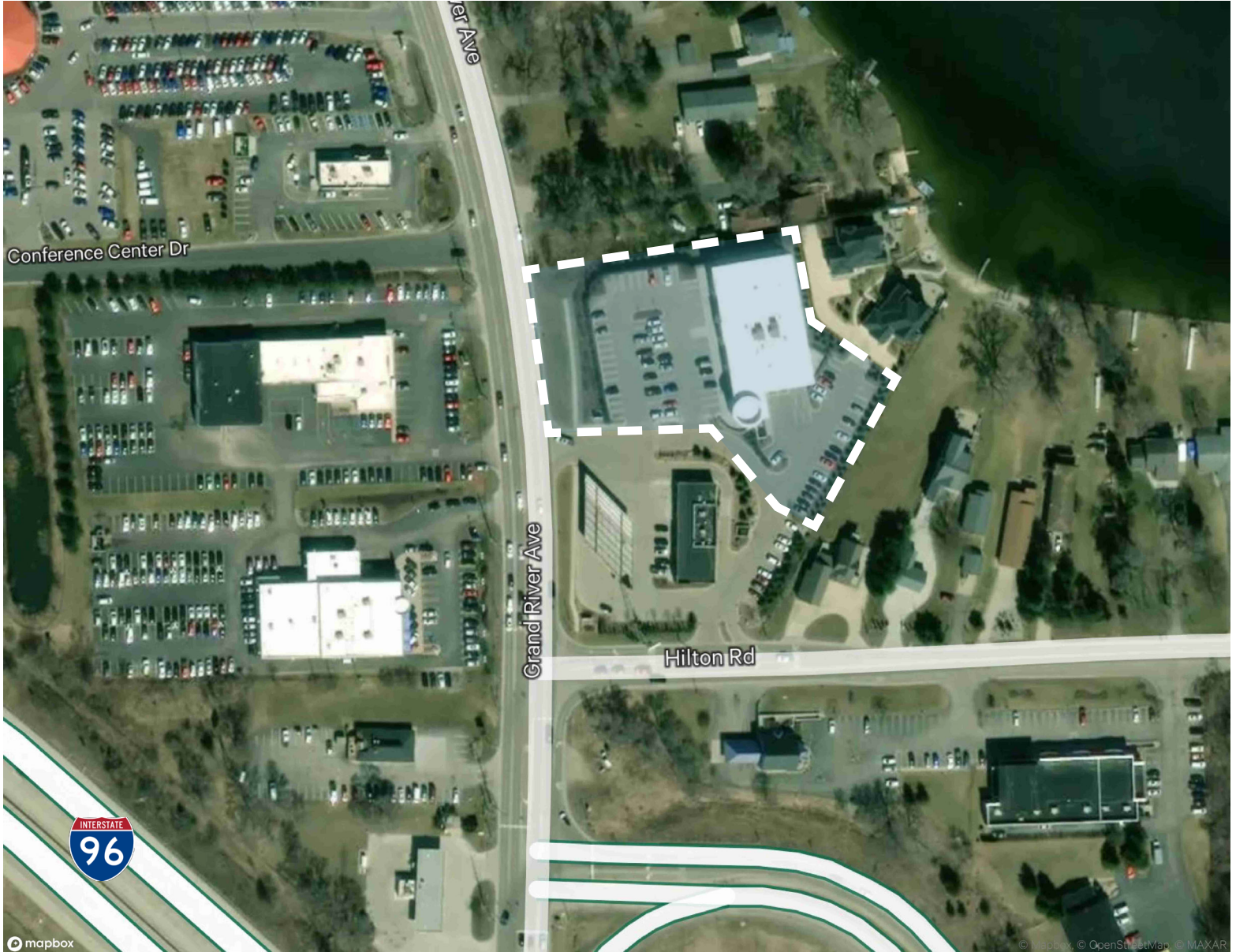
brandon.carnegie@cbre.com

© 2024 CBRE, Inc. All rights reserved. This information has been obtained from sources believed reliable but has not been verified for accuracy or completeness. CBRE, Inc. makes no guarantee, representation or warranty and accepts no responsibility or liability as to the accuracy, completeness, or reliability of the information contained herein. You should conduct a careful, independent investigation of the property and verify all information. Any reliance on this information is solely at your own risk.

8273 W. Grand River Ave
Brighton, MI

For Sublease

Property Aerial

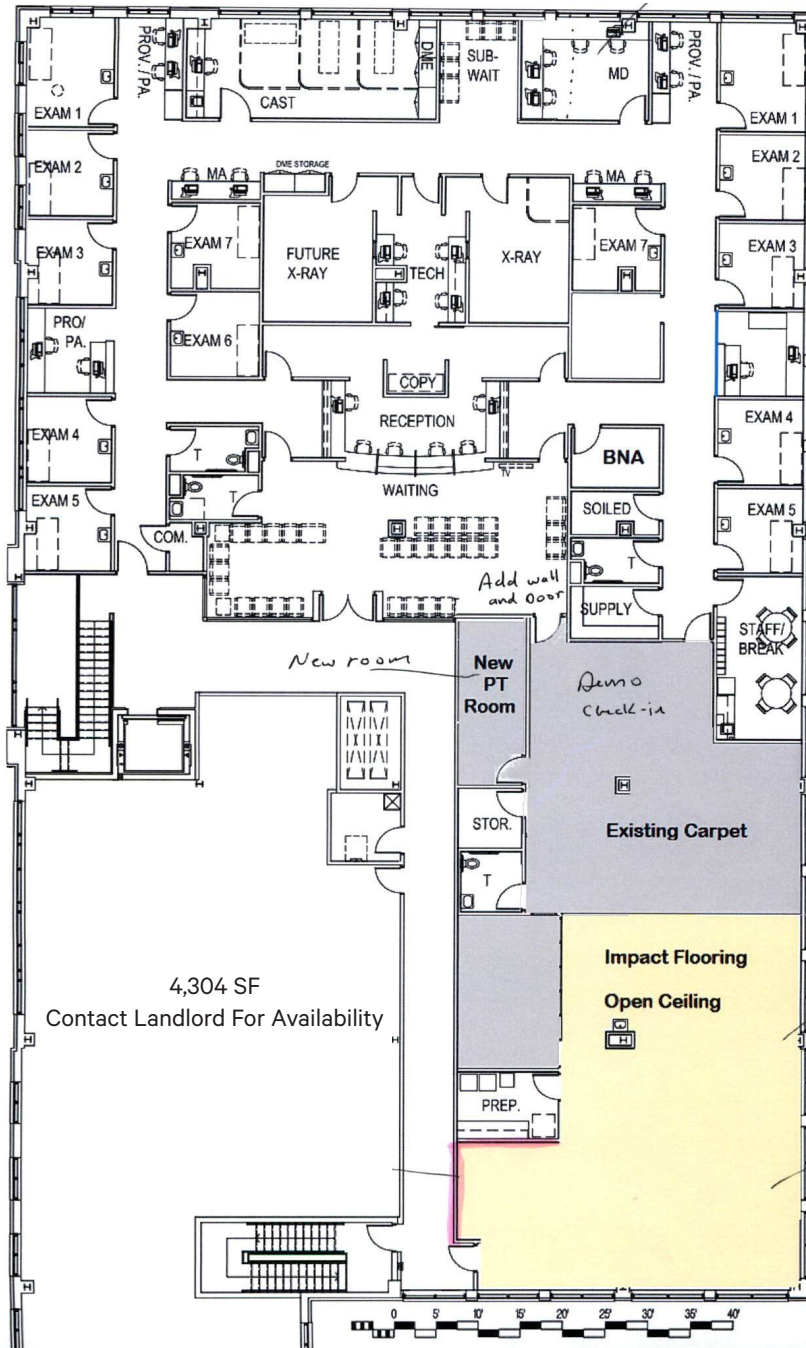


© 2024 CBRE, Inc. All rights reserved. This information has been obtained from sources believed reliable but has not been verified for accuracy or completeness. CBRE, Inc. makes no guarantee, representation or warranty and accepts no responsibility or liability as to the accuracy, completeness, or reliability of the information contained herein. You should conduct a careful, independent investigation of the property and verify all information. Any reliance on this information is solely at your own risk.

www.cbre.com/detroit

CBRE

Floor Plan



© 2024 CBRE, Inc. All rights reserved. This information has been obtained from sources believed reliable but has not been verified for accuracy or completeness. CBRE, Inc. makes no guarantee, representation or warranty and accepts no responsibility or liability as to the accuracy, completeness, or reliability of the information contained herein. You should conduct a careful, independent investigation of the property and verify all information. Any reliance on this information is solely at your own risk.

Photos



© 2024 CBRE, Inc. All rights reserved. This information has been obtained from sources believed reliable but has not been verified for accuracy or completeness. CBRE, Inc. makes no guarantee, representation or warranty and accepts no responsibility or liability as to the accuracy, completeness, or reliability of the information contained herein. You should conduct a careful, independent investigation of the property and verify all information. Any reliance on this information is solely at your own risk.