

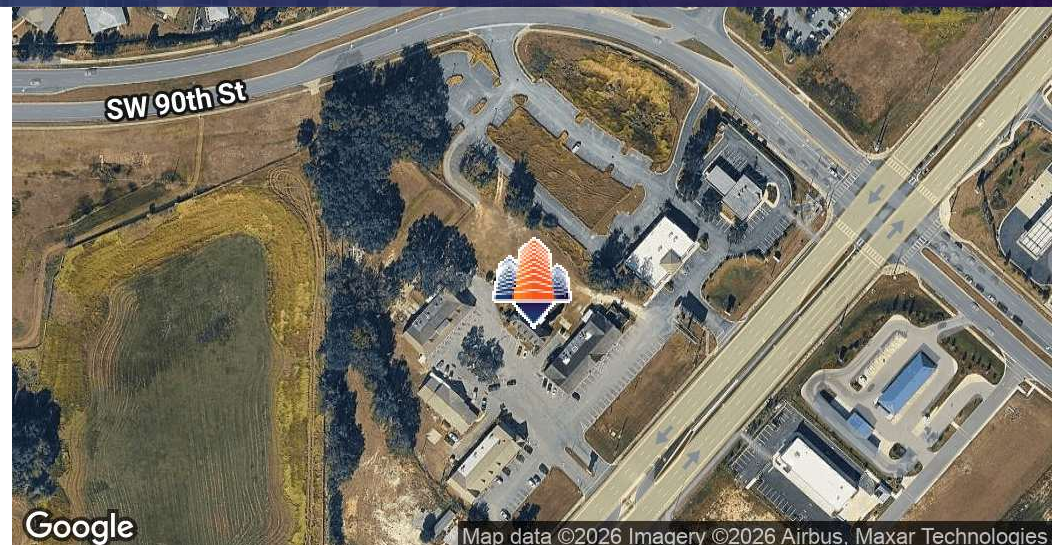
Circle Square Plaza

7651 Southwest State Road 200, Ocala, FL 34476



EQUITY
INVESTMENT
SERVICES

PROPERTY SUMMARY



PROPERTY HIGHLIGHTS

- 1,450 SF Endcap Space Available
- Left in access form SR 200
- Cross access to lighted intersection
- Over 20,000 cars per day
- Located next to growing community On Top of the World with 10,000 homes and three golf courses
- Area retailers include: Publix, Walmart, Lowe's, and Sprouts

OFFERING SUMMARY

Lease Rate:	Negotiable
Available SF:	1,450 SF
Lot Size:	6.46 Acres
Building Size:	25,151 SF

DEMOGRAPHICS	1 MILE	3 MILES	5 MILES
Total Households	1,979	22,198	31,010
Total Population	3,727	43,070	65,554
Average HH Income	\$68,397	\$80,104	\$82,939

Nick Barbato

954.579.2672

NBarbato@eisre.com

Ryan D'Agostino

954.336.3615

RDAgostino@eisre.com



7575 Dr. Phillips Blvd, Ste 390

Orlando, FL 32819

www.eisre.com

Circle Square Plaza

7651 Southwest State Road 200, Ocala, FL 34476

PROPERTY PHOTO



EQUITY
INVESTMENT
SERVICES



Nick Barbato

954.579.2672

NBarbato@eisre.com

Ryan D'Agostino

954.336.3615

RDagostino@eisre.com



7575 Dr. Phillips Blvd, Ste 390

Orlando, FL 32819

www.eisre.com

Circle Square Plaza

7651 Southwest State Road 200, Ocala, FL 34476



EQUITY
INVESTMENT
SERVICES

RETAILER MAP



Map data ©2025 Google Imagery ©2025 Airbus, Landsat / Copernicus, Maxar Technologies

Nick Barbato

954.579.2672

NBarbato@eisre.com

Ryan D'Agostino

954.336.3615

RDAgostino@eisre.com



7575 Dr. Phillips Blvd, Ste 390

Orlando, FL 32819

www.eisre.com

Circle Square Plaza

7651 Southwest State Road 200, Ocala, FL 34476



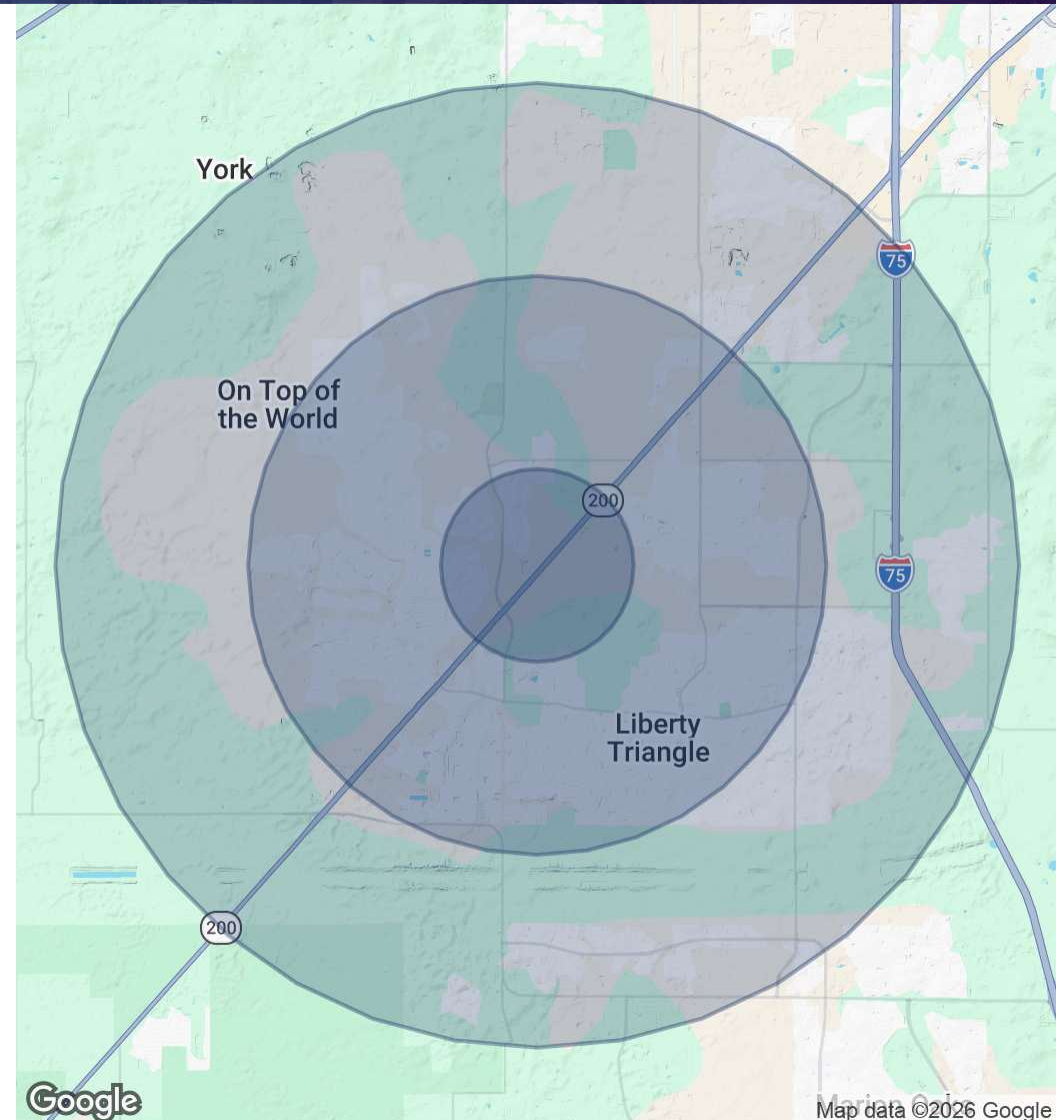
EQUITY
INVESTMENT
SERVICES

DEMOGRAPHICS MAP & REPORT

POPULATION	1 MILE	3 MILES	5 MILES
Total Population	3,727	43,070	65,554
Average Age	67	64	57

HOUSEHOLDS & INCOME	1 MILE	3 MILES	5 MILES
Total Households	1,979	22,198	31,010
# of Persons per HH	1.80	1.92	2.10
Average HH Income	\$68,397	\$80,104	\$82,939
Average House Value	\$314,725	\$325,186	\$332,835

RACE	1 MILE	3 MILES	5 MILES
Total Population - White	3,094	28,903	43,089
Total Population - Black	128	1,831	5,336
Total Population - Asian	71	746	1,992
Total Population - Hawaiian	0	10	29
Total Population - American Indian	5	78	174
Total Population - Other	82	1,143	3,068



Nick Barbato
954.579.2672
NBarbato@eisre.com

Ryan D'Agostino
954.336.3615
RDagostino@eisre.com



7575 Dr. Phillips Blvd, Ste 390
Orlando, FL 32819
www.eisre.com