



Faircrest St SW

Canton, Ohio 44706

SALE PRICE	\$500,000.00
LAND AREA	10.68
PARCEL	8300001
FRONTAGE/DEPTH	350' / 1,329'
ZONING	B3 - Canton City
TRAFFIC COUNT	9,278 AADT

- Development opportunity.
- 1/4 mile from I-77.
- Perfect for Assisted Living.
- Wetlands study available.
- Newer development in that area.
- All utilities at street.

Sean Sanford

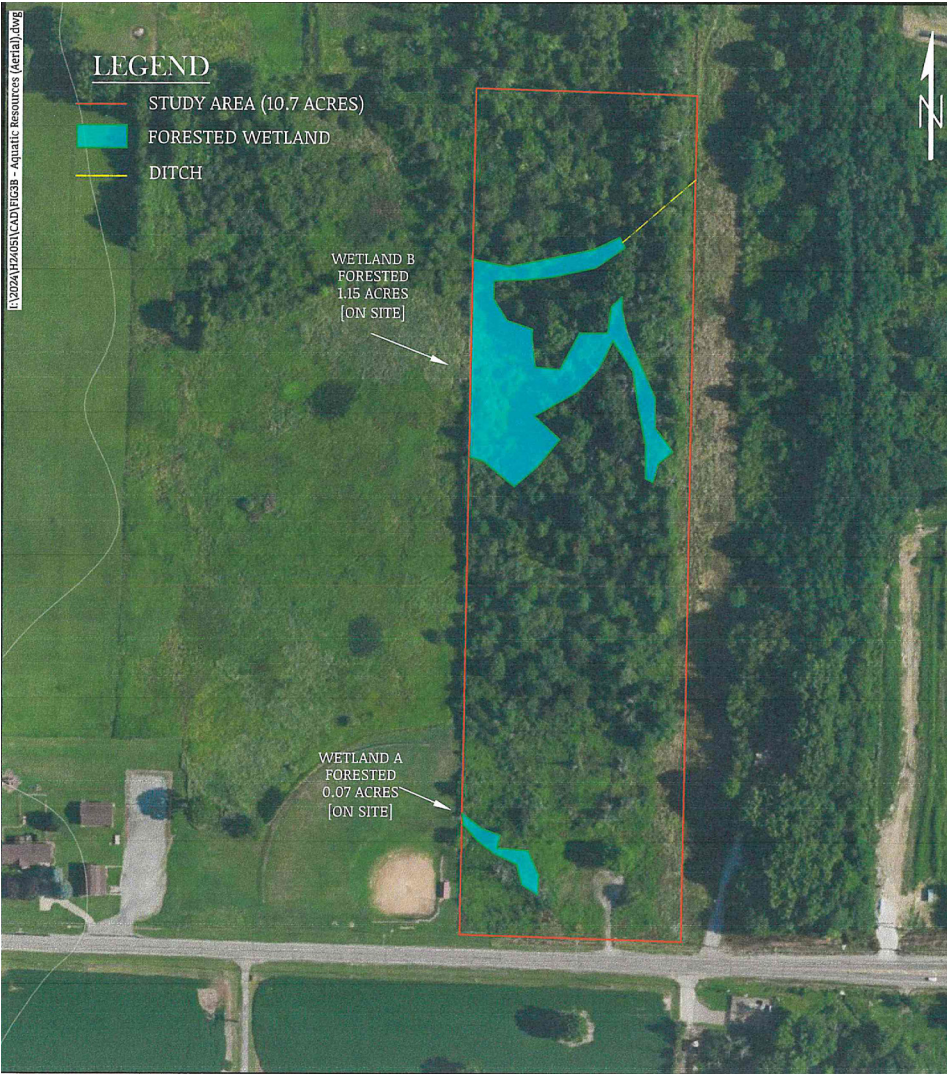
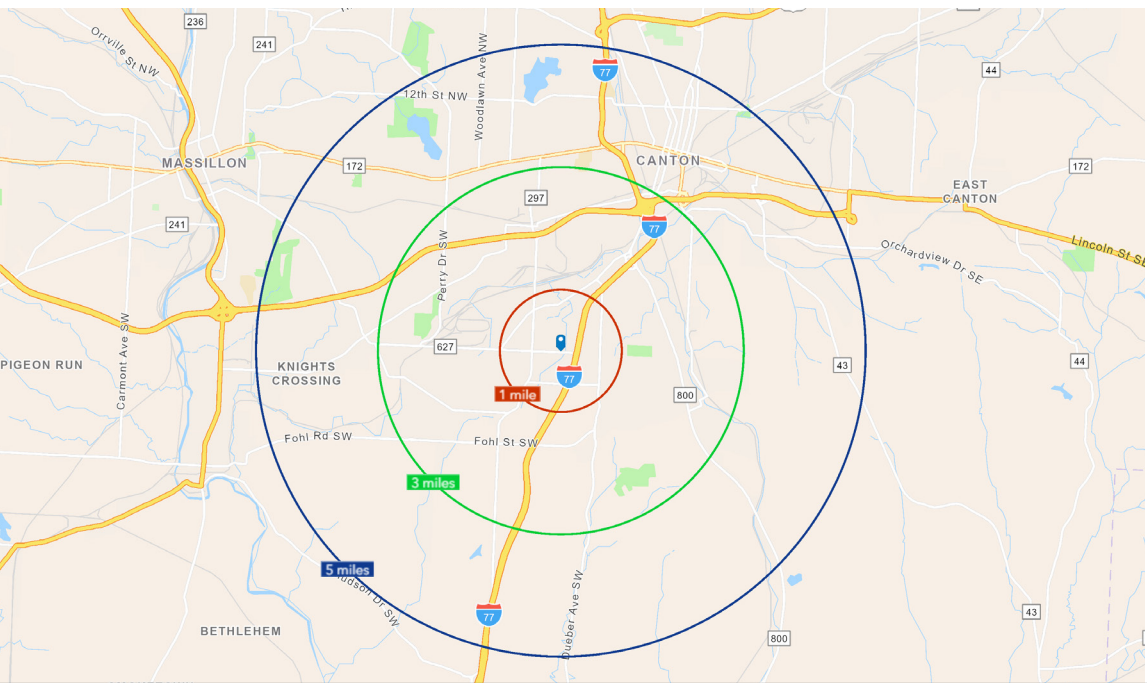
C 330 284 0331

sean@starkcountycommercial.com

DEMOGRAPHICS/WETLANDS STUDY

Faircrest St SW
Canton, Ohio 44706

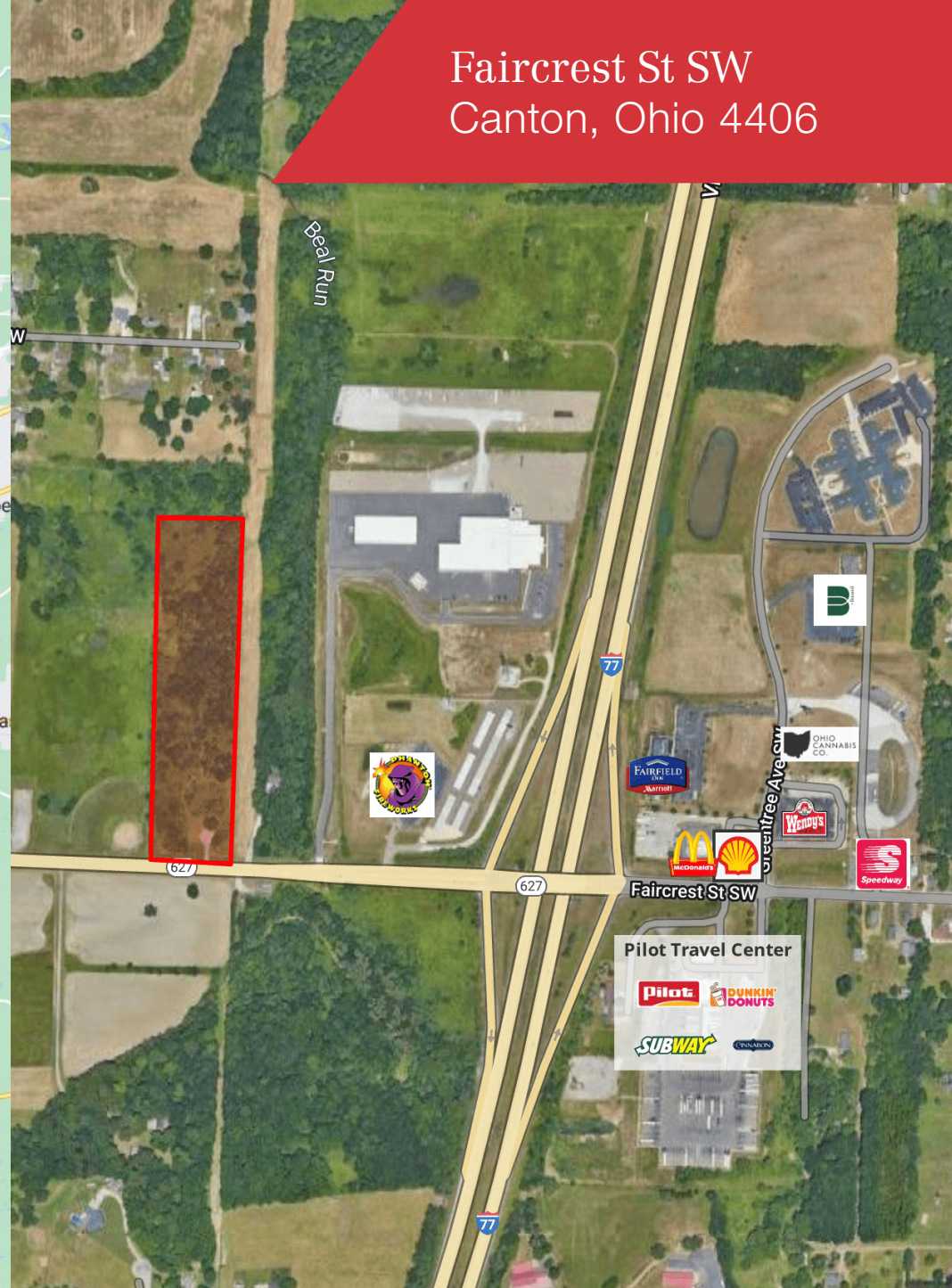
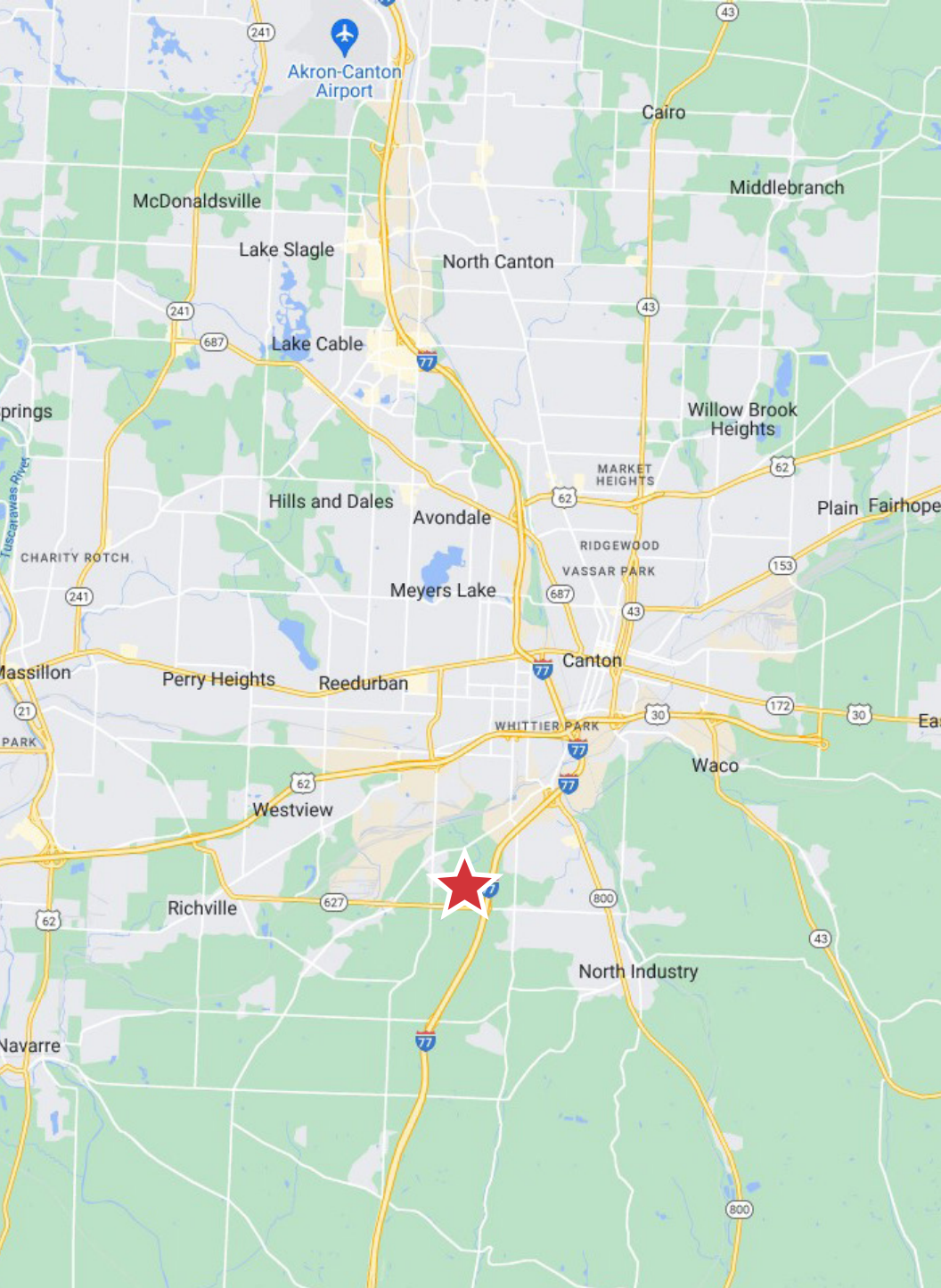
2024 Summary	1 Mile	3 Miles	5 Miles
Population	1,617	25,085	83,461
Households	681	10,747	35,689
Families	462	6,495	20,411
Average Household Size	2.35	2.33	2.30
Owner Occupied Housing Units	577	7,035	21,425
Renter Occupied Housing Units	104	3,712	14,264
Median Age	47.7	40.5	40.4
Median Household Income	\$75,993	\$53,946	\$51,319
Average Household Income	\$84,266	\$67,084	\$67,297



NO WARRANTY OR REPRESENTATION, EXPRESS OR IMPLIED, IS MADE AS TO THE ACCURACY OF THE INFORMATION CONTAINED HEREIN, AND THE SAME IS SUBMITTED SUBJECT TO ERRORS, OMISSIONS, CHANGE OF PRICE, RENTAL OR OTHER CONDITIONS, PRIOR SALE, LEASE OR FINANCING, OR WITHDRAWAL WITHOUT NOTICE, AND OF ANY SPECIAL LISTING CONDITIONS IMPOSED BY OUR PRINCIPALS NO WARRANTIES OR REPRESENTATIONS ARE MADE AS TO THE CONDITION OF THE PROPERTY OR ANY HAZARDS CONTAINED THEREIN ARE ANY TO BE IMPLIED.

8234 Pittsburg Ave NW
North Canton, OH 44720
+1 330 966 8800
naispring.com

Faircrest St SW Canton, Ohio 4406



NO WARRANTY OR REPRESENTATION, EXPRESS OR IMPLIED, IS MADE AS TO THE ACCURACY OF THE INFORMATION CONTAINED HEREIN, AND THE SAME IS SUBMITTED SUBJECT TO ERRORS, OMISSIONS, CHANGE OF PRICE, RENTAL OR OTHER CONDITIONS, PRIOR SALE, LEASE OR FINANCING, OR WITHDRAWAL WITHOUT NOTICE, AND OF ANY SPECIAL LISTING CONDITIONS IMPOSED BY OUR PRINCIPALS NO WARRANTIES OR REPRESENTATIONS ARE MADE AS TO THE CONDITION OF THE PROPERTY OR ANY HAZARDS CONTAINED THEREIN ARE ANY TO BE IMPLIED.

8234 Pittsburg Ave NW
North Canton, OH 44720
+1 330 966 8800

naispring.com