

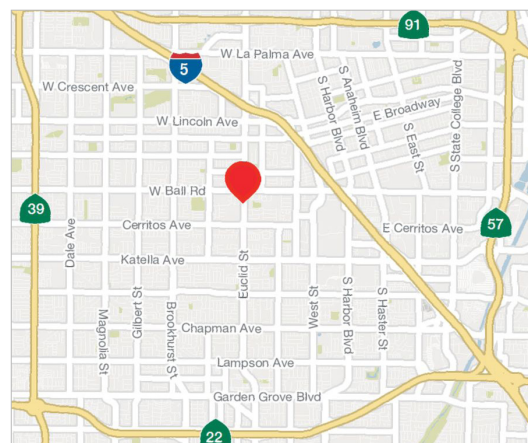


NWC Ball Road & Euclid Street

Anaheim, CA

Property Highlights:

- Successful Anaheim Neighborhood Center Anchored by Northgate Markets, Optum Medical Group, El Pollo Loco, Chipotle Mexican Grill, Panda Express & Winchell's Donuts
- Available Space:
 - 8,400 SF Sub-Ancor Opportunity
 - 1,800 SF of Inline Space
 - 1,600 SF - Future Pad Opportunity
- Major Signalized Intersection with Visibility and Access to Both Euclid St. & Ball Rd.
- Prominent Building and Pylon Signage



Demographics	1 Mile	2 Mile	3 Mile
Total Population	37,102	134,067	308,003
Average HH Income	\$87,765	\$88,075	\$87,907
No. of Employees	6,976	113,339	165,218

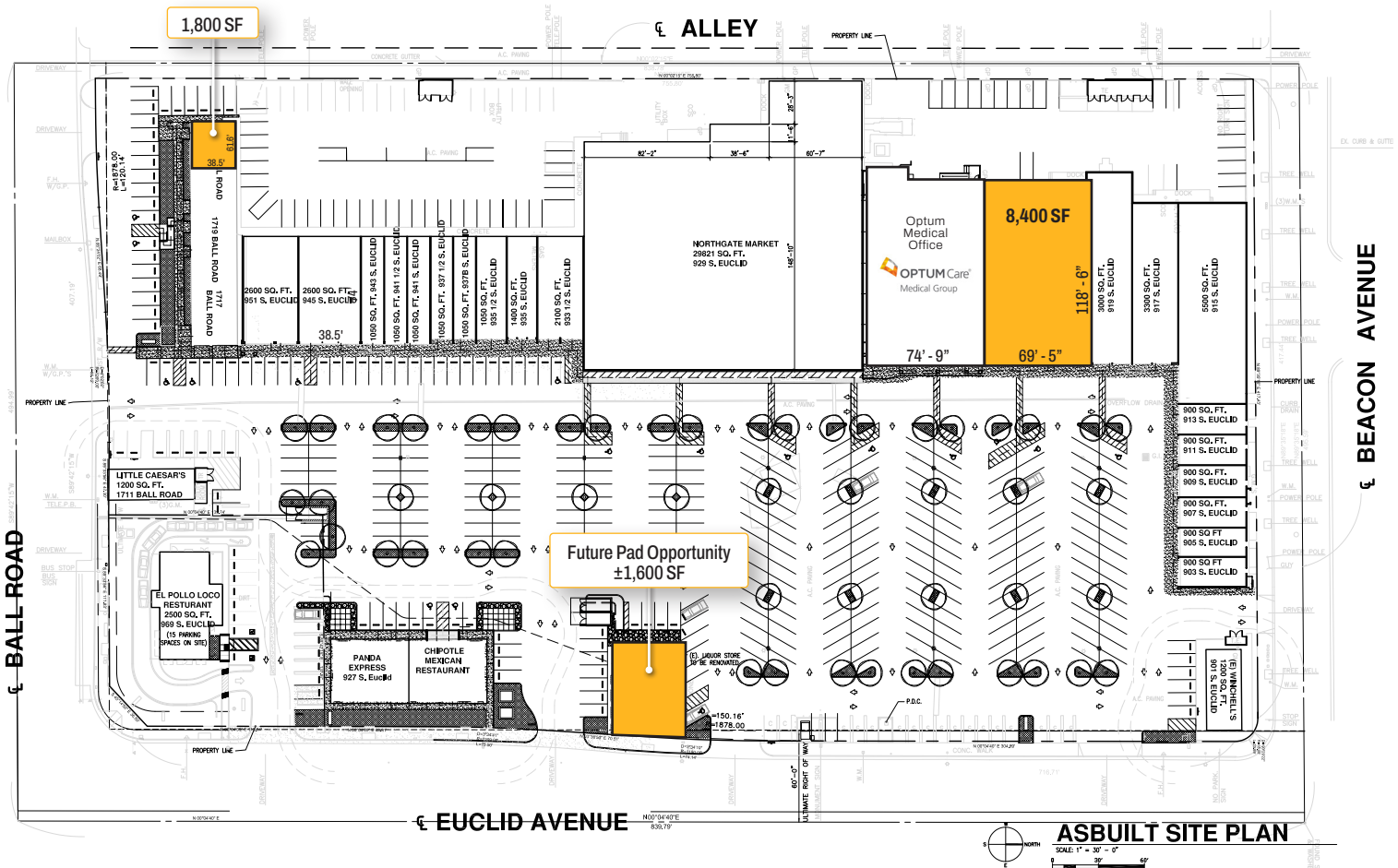
Traffic Count	
Euclid St.	39,635 CPD
Ball Rd.	24,094 CPD
Total	63,729 CPD

For More Information:

Steven H. Weiss
Executive Vice President
swiss@naicapital.com
D 818.905.2400 x 1634
Cal DRE Lic. #00680554

NAI Capital Commercial
15821 Ventura Blvd., Suite 320
Encino, California 91436
FAX 818.905.2425
naicapital.com

No warranty, express or implied, is made as to the accuracy of the information contained herein. This information is submitted subject to errors, omissions, change of price, rental or other conditions, withdrawal without notice, and is subject to any special listing conditions imposed by our principals. Cooperating brokers, buyers, tenants and other parties who receive this document should not rely on it, but should use it as a starting point of analysis, and should independently confirm the accuracy of the information contained herein through a due diligence review of the books, records, files and documents that constitute reliable sources of the information described herein. Logos are for identification purposes only and may be trademarks of their respective companies. NAI Capital, Inc. Cal DRE Lic. #02130474.



No warranty, express or implied, is made as to the accuracy of the information contained herein. This information is submitted subject to errors, omissions, change of price, rental or other conditions, withdrawal without notice, and is subject to any special listing conditions imposed by its principals. Cooperating brokers, buyers, tenants or others who use this information for any purpose should not rely on it, but should use it as a starting point of analysis, and should independently confirm the accuracy of the information contained herein through a due diligence review of the books, records, files and documents that constitute reliable sources of the information described herein. Logos are for identification purposes only and may be trademarks of their respective companies. NAI Capital, Inc. Cal CRE Lic. #021304074.