

940

Ridgebrook Road
Sparks, MD 21152

 TRANSWESTERN



SPECIFICATIONS

MODERN, SPACIOUS, AND VERSATILE



70K SF

Typical Floorplate



210K SF

High Quality Office



1,000+

Parking SPaces



THE CONTEXT

ACCESSIBLE & CONVENIENT

5 MINS

Drive to I-83

35 MINS

Drive to BWI Airport

25 MINS

Drive to Downtown
Baltimore

HUNT VALLEY TOWNE CENTER

tropical
SMOOTHIE
CAFE

Chick-fil-A



FIRST
WATCH

Peet's Coffee

OUTBACK
STEAKHOUSE®

IRON ROOSTER

MISSION BBQ
The American Way.

Orangetheory
FITNESS

Onelife
FITNESS

CAVA

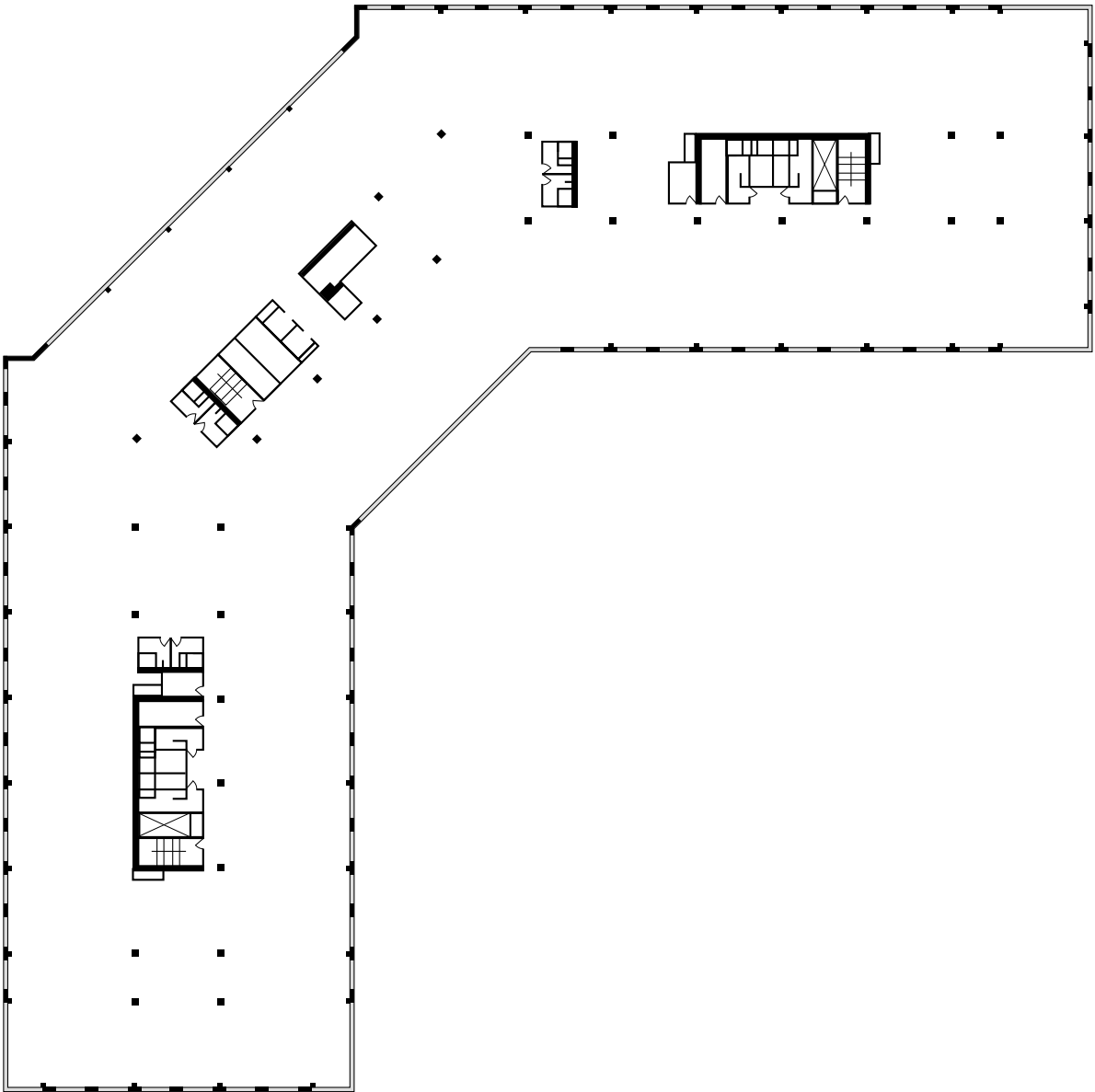
Panera
BREAD

theGreeneTurtle



AVAILABILITIES

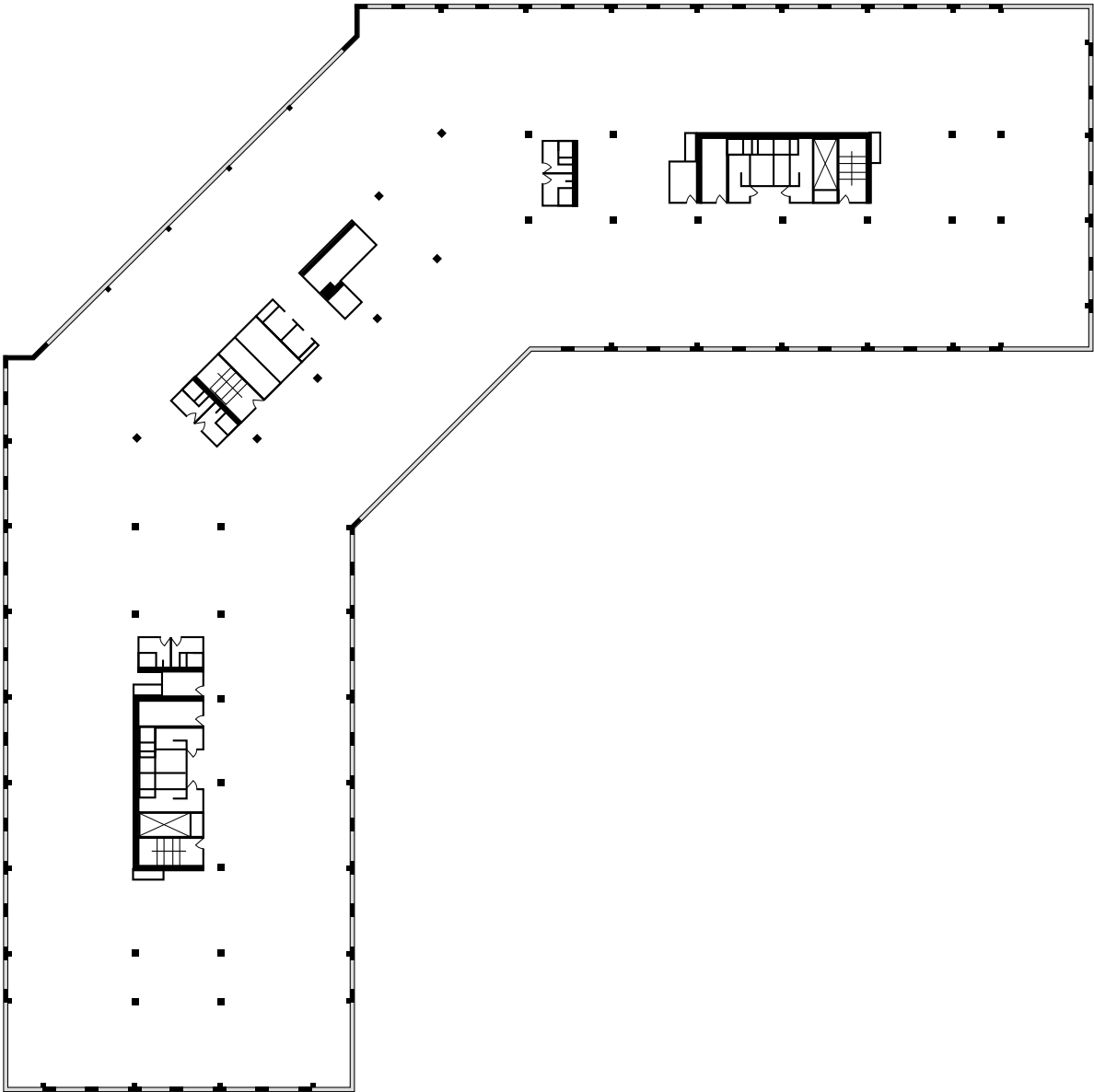
1ST FLOOR



70,000 SF

AVAILABILITIES

2ND FLOOR

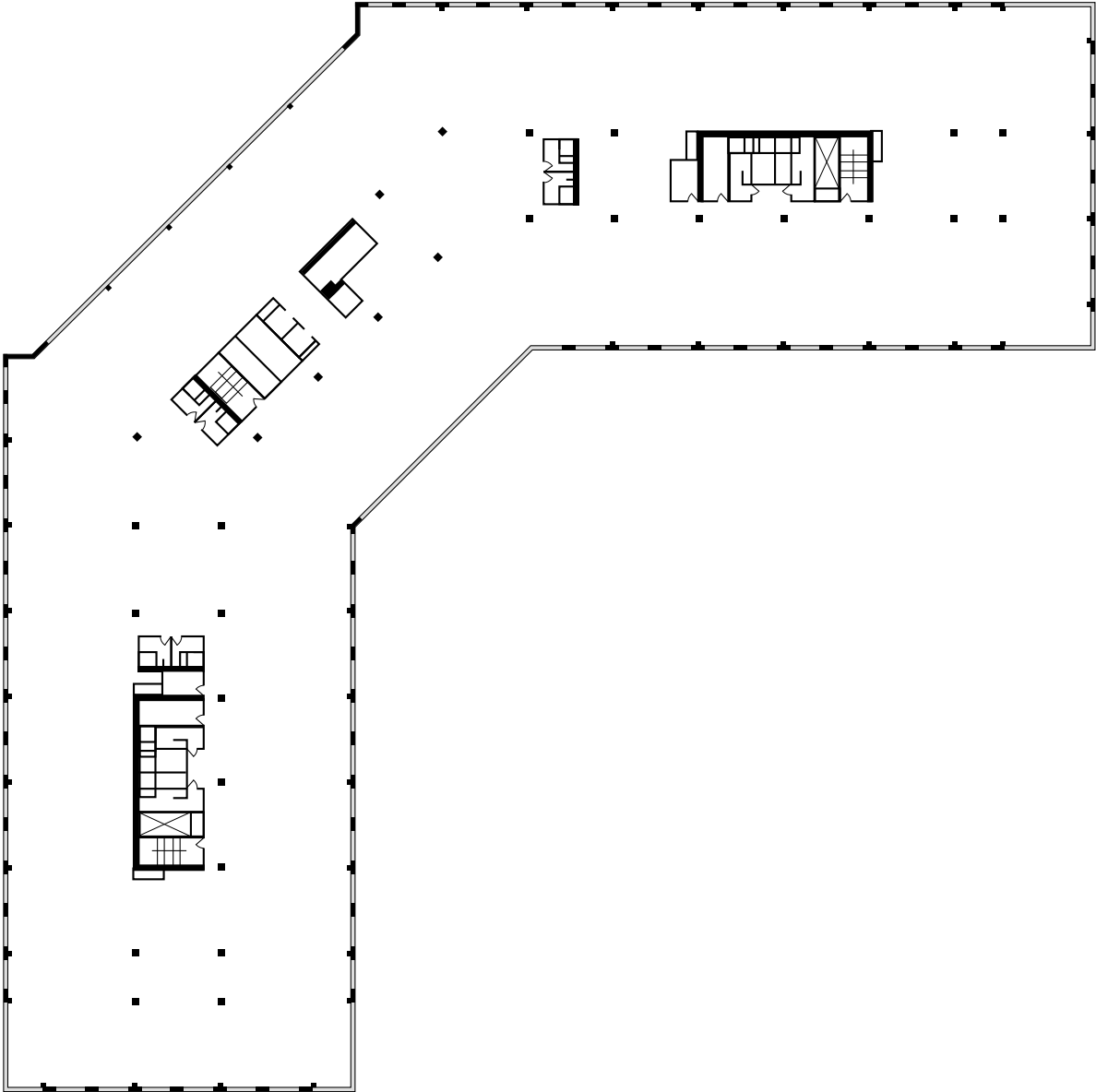


70,000 SF

AVAILABILITIES

3RD FLOOR

70,000 SF





FOR LEASING INFORMATION, PLEASE CONTACT:

Don Foran

443.285.7668

don.foran@

transwestern.com

Guy Copperthite

301.896.9015

guy.copperthite@

transwestern.com

Tim Hearn

410.458.3494

tim.hearn@

troutdaniel.com

T TRANSWESTERN

7373 Wisconsin Ave, Suite 850,
Bethesda, Maryland 20814
301.571.0900