

557 Seminole Road, Suite B  
Muskegon, Michigan



## *Medical Office Space For Lease*

3,200 SF of medical office space available within the highly desirable Seminole Road corridor in Norton Shores. The space is comprised of multiple exam rooms (15+), physician offices (5), general administration offices and work area, procedure room, employee lounge rooms (2), and a large patient reception/waiting area. The location is within the Seminole Woods Office Park Condominium Development and the building is shared with Shoreline Foot & Ankle Associates. The current tenant (Norton Shores Internal Medicine and Nephrology) will be vacating the space at the end of 2024. Marketing in partnership with Jeff Tucker of Bradley Company.

***Lease Price: \$15.00/SF/Yr NNN (\$4,000.00/Month)***

For more information, please contact:

BRYAN BENCH  
231 578 2508  
bryanbench@corerealty.com

JEFF TUCKER  
616 881 9321  
jtucker@bradleyco.com

Connect with us:

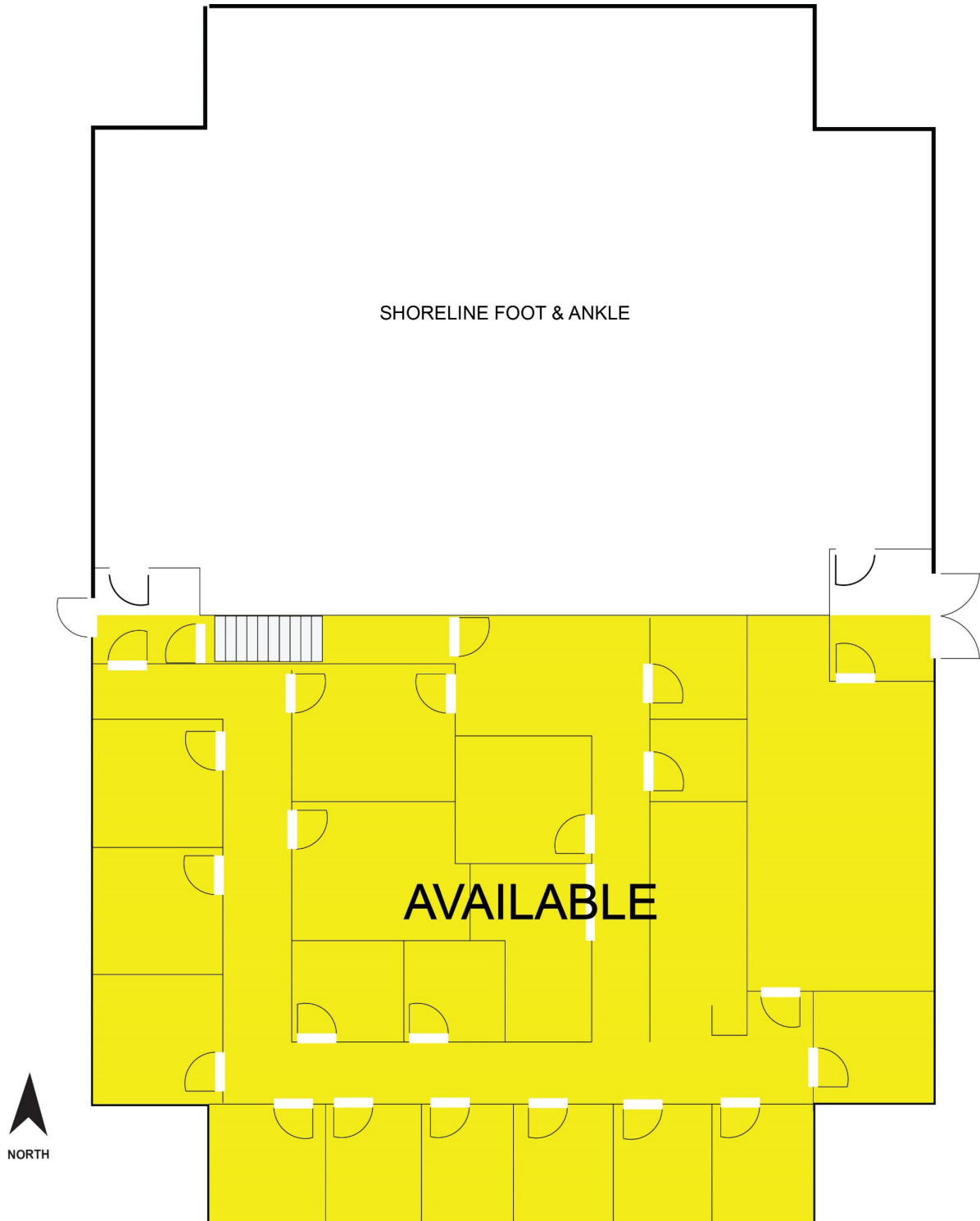


**CORE REALTY PARTNERS**

221 W. Webster Avenue  
Muskegon, MI 49440

www.corecommercialrealty.com

Floor Plan



For more information, please contact:

BRYAN BENCH  
231 578 2508  
bryanbench@corerealty.com

JEFF TUCKER  
616 881 9321  
jtucker@bradleyco.com

Connect with us:



CORE REALTY PARTNERS

221 W. Webster Avenue  
Muskegon, MI 49440

www.corecommercialrealty.com

Interior Photos



For more information, please contact:

Connect with us:



BRYAN BENCH  
231 578 2508  
bryanbench@corerealty.com

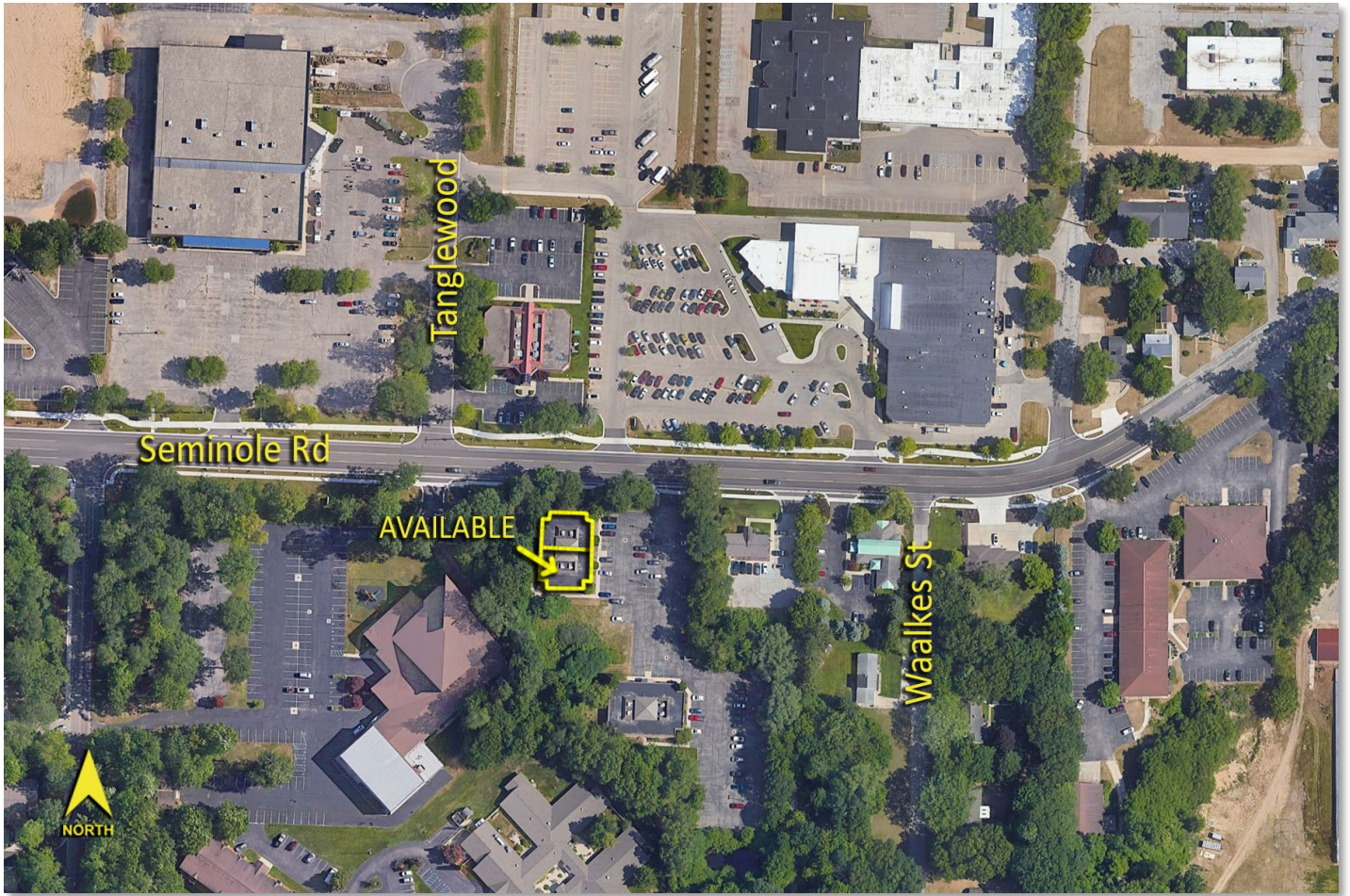
JEFF TUCKER  
616 881 9321  
jtucker@bradleyco.com

CORE REALTY PARTNERS

221 W. Webster Avenue  
Muskegon, MI 49440

www.corecommercialrealty.com

Aerial



For more information, please contact:

BRYAN BENCH  
231 578 2508  
bryanbench@corerealty.com

JEFF TUCKER  
616 881 9321  
jtucker@bradleyco.com

Connect with us:



CORE REALTY PARTNERS

221 W. Webster Avenue  
Muskegon, MI 49440

www.corecommercialrealty.com