

OFFICE SPACE FOR SUBLEASE

8440 Woodfield Crossing Blvd. | Indianapolis, IN 46240



Keystone at the Crossing, Class A Sublease Opportunity

Available SF:	Suite 170 - 3,864 SF
Building Size:	125,458 SF
Parking:	Ample surface parking, 4.6/1,000
Sublease Rate:	\$17.75 PSF

Space Details:

The property offers ground-level access with direct entry to the lobby, ensuring convenience for tenants and visitors. Additionally, the furniture, fixtures, and equipment (FF&E) are negotiable, providing flexibility for customization based on tenant needs.

Building Details:

The property is a five-story office building constructed in 1987. The space for sublease is located on the 1st floor, suite 170. This suite offers 3,864 SF of office space. The property offers ample parking, ensuring convenient access for tenants and visitors. Two elevators are available for easy access to all floors, enhancing convenience for occupants. With its modern amenities and strategic design, this office building is a prime choice for businesses looking for a well-equipped, safe, and accessible workspace.

[VIEW PROPERTY ONLINE](#)

[VIEW PROPERTY VIDEO](#)



P 317.875.8888 | CRESSY.COM | CONNECT WITH US! [in](#) [x](#) [f](#) [v](#)
3502 Woodview Trace, Suite 250, Indianapolis, IN 46268

Cressy Commercial Real Estate is a Minority Business Enterprise (MBE) as well as certified by the National Native American Supplier Council (NNASC).



Information furnished regarding property for sale, rental or financing is from sources deemed reliable. But no warranty or representation is made as to the accuracy thereof and same is submitted subject to errors, omissions, change of price, rental or other conditions, prior sale, leased, financing or withdrawal without notice. No liability of any kind is to be imposed on the broker herein. NAI Cressy is the Global Brokerage Division of Cressy Commercial Real Estate.

Luke Troyer
Broker

D 317.566.5615 | C 574.261.8912
ltroyer@cressy.com

Andrew Follman, CCIM
Market President

D 317.566.5614 | C 317.294.3576
afollman@cressy.com

EXTERIOR PHOTOS

OFFICE SPACE FOR SUBLEASE
8440 Woodfield Crossing Blvd. | Indianapolis, IN 46240



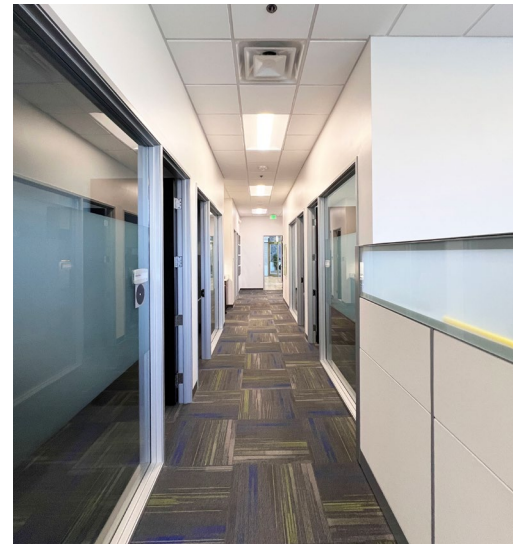
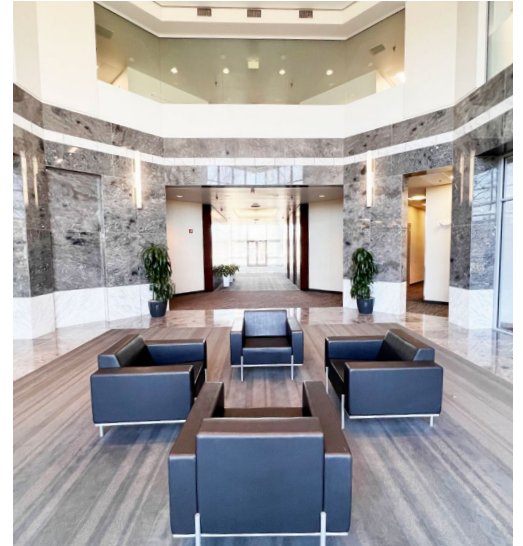
NAI Cressy is the Global Brokerage Division
of Cressy Commercial Real Estate.

Luke Troyer
Broker
D 317.566.5615 | C 574.261.8912
ltroyer@cressy.com

Andrew Follman, CCIM
Market President
D 317.566.5614 | C 317.294.3576
afollman@cressy.com

INTERIOR PHOTOS

OFFICE SPACE FOR SUBLEASE
8440 Woodfield Crossing Blvd. | Indianapolis, IN 46240



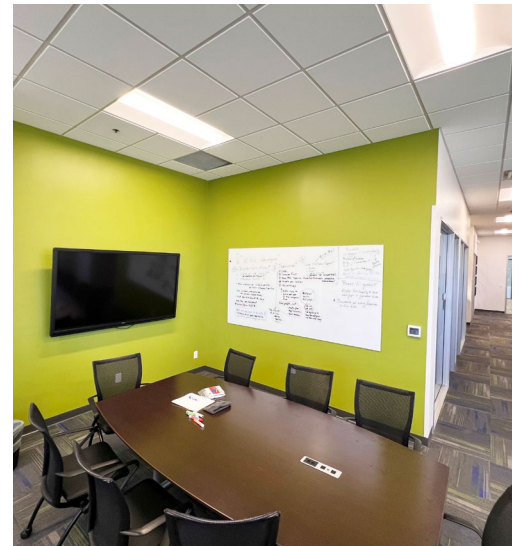
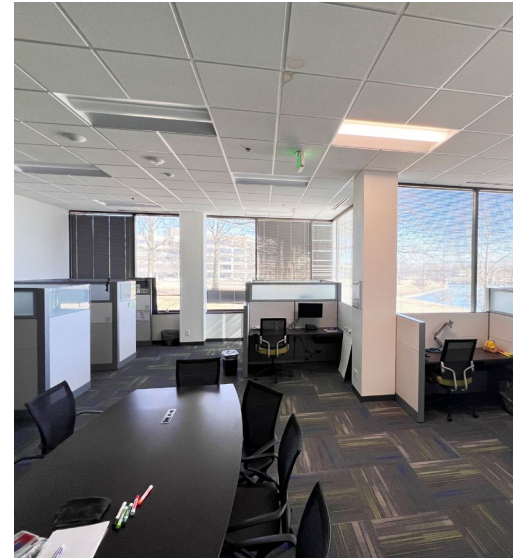
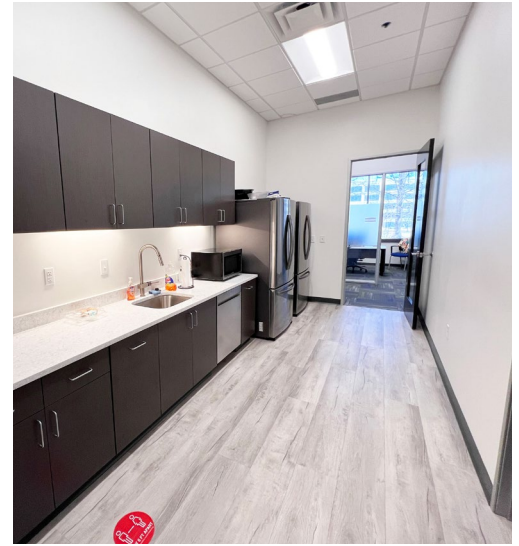
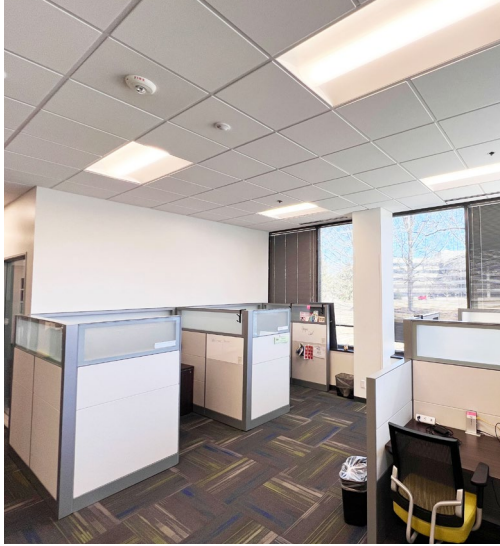
NAI Cressy is the Global Brokerage Division
of Cressy Commercial Real Estate.

Luke Troyer
Broker
D 317.566.5615 | C 574.261.8912
ltroyer@cressy.com

Andrew Follman, CCIM
Market President
D 317.566.5614 | C 317.294.3576
afollman@cressy.com

INTERIOR PHOTOS

OFFICE SPACE FOR SUBLEASE
8440 Woodfield Crossing Blvd. | Indianapolis, IN 46240



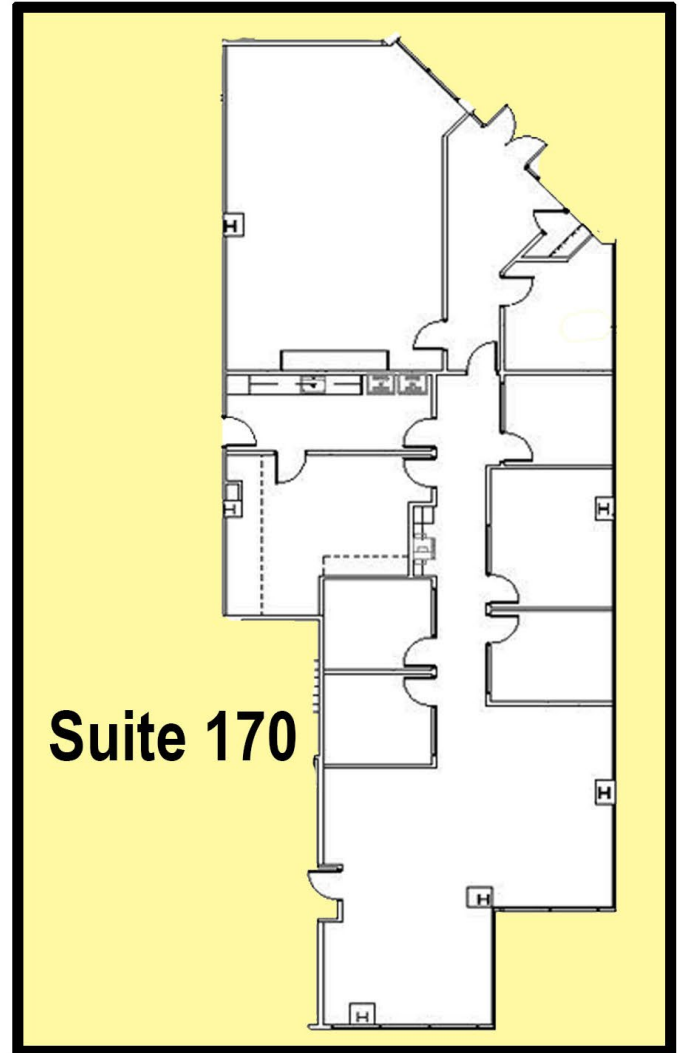
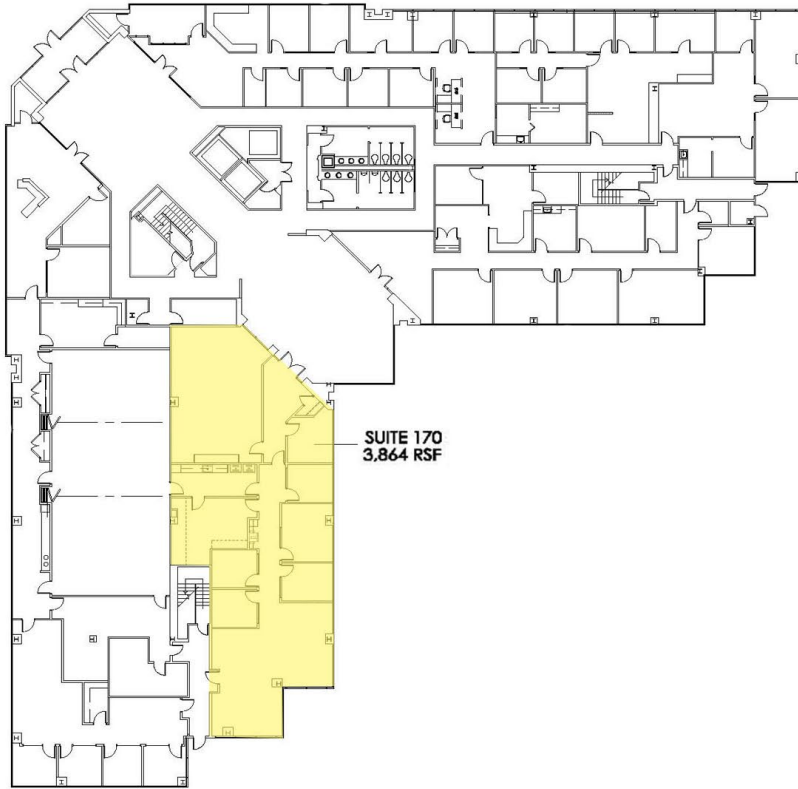
FLOOR PLAN

OFFICE SPACE FOR SUBLEASE

8440 Woodfield Crossing Blvd. | Indianapolis, IN 46240

Suite 170 offers:

6 private offices, kitchen, large training/conference room, open collab space / cube area, additional breakroom/meeting space and exit to outdoors.



schott
design
www.schottdesign.com

SCALE: 1/32" = 1'-0"
PROJECT: 2020.775
PROJECT MGR: BW

WOODFIELD TWO

8440 WOODFIELD CROSSING BLVD - 1ST FLOOR
INDIANAPOLIS, INDIANA 46240



DATE: 04.16.20

NAI Cressy is the Global Brokerage Division
of Cressy Commercial Real Estate.

Luke Troyer
Broker

D 317.566.5615 | C 574.261.8912
ltroyer@cressy.com

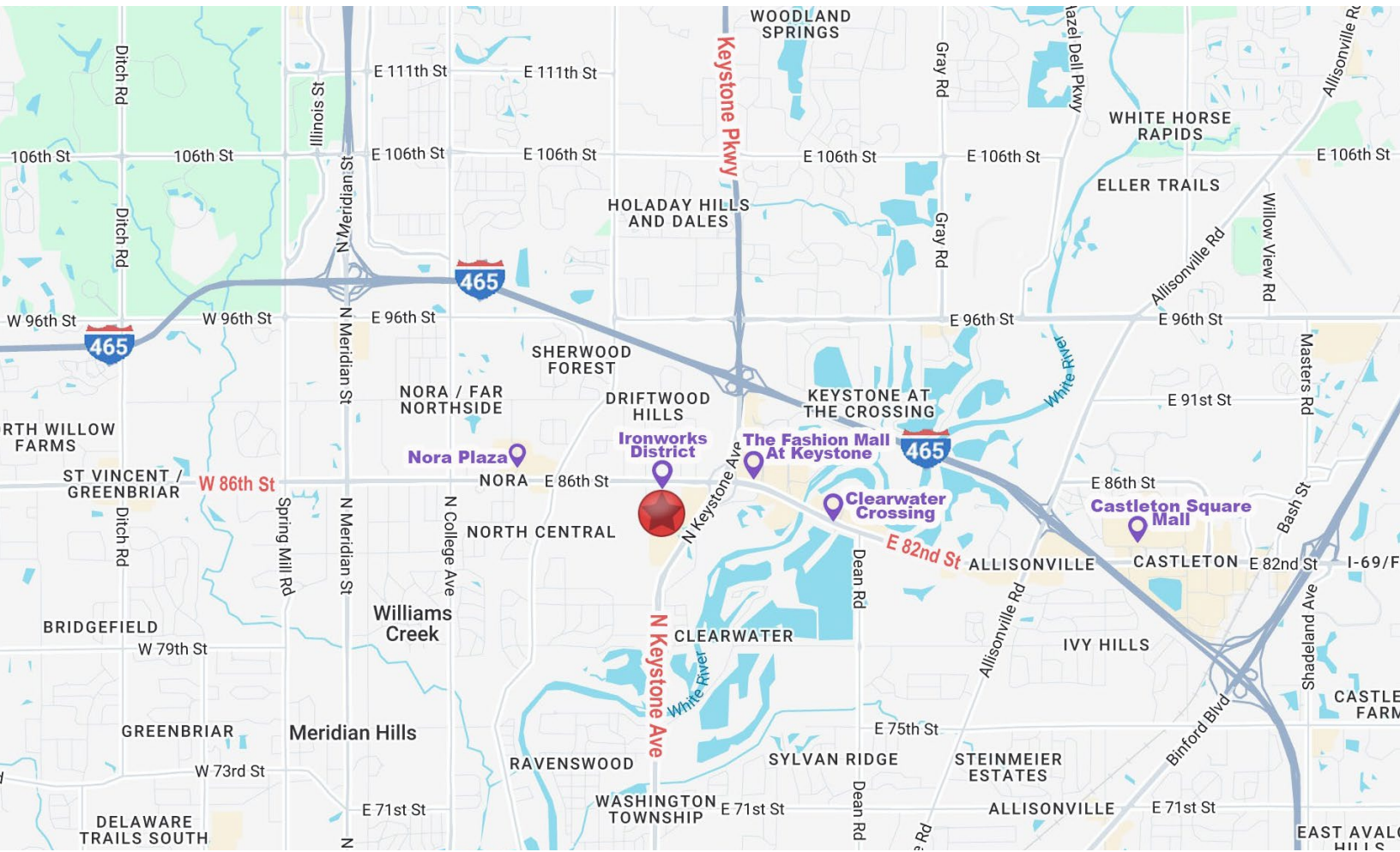
Andrew Follman, CCIM
Market President

D 317.566.5614 | C 317.294.3576
afollman@cressy.com

LOCATION OVERVIEW

OFFICE SPACE FOR SUBLEASE

8440 Woodfield Crossing Blvd. | Indianapolis, IN 46240



Located in Woodfield Crossing in Indianapolis, Indiana, within Marion County, this area offers a blend of residential and commercial spaces. Situated in the heart of Indiana's capital, Woodfield Crossing provides easy access to major highways and local amenities, making it a convenient spot for both residents and visitors. The surrounding neighborhood features a mix of parks, shopping centers, and dining options, creating a vibrant and community-oriented atmosphere. Its central location within Marion County makes it a desirable destination for businesses and families alike, with proximity to downtown Indianapolis, offering both convenience and charm.

