



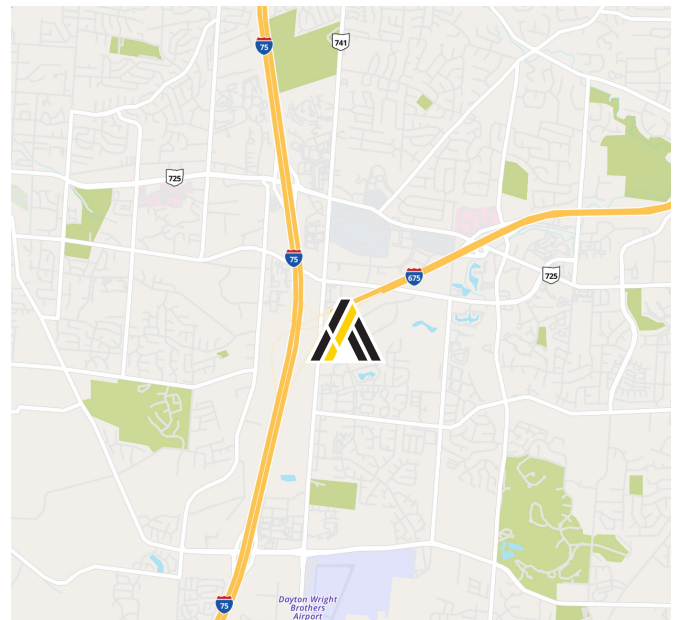
# Newmark Centre XI

3571 Newmark Drive  
Miamisburg, Ohio 45342

**LEASE RATE:**  
**\$16.50 PSF MODIFIED GROSS**

## Property Highlights

- **Single-Story Office Building - 3,174± SF Available:** Secure, well-maintained building within a professional campus-style environment.
- **Ample On-Site Parking:** Easy access for employees and visitors.
- **Premier South Dayton Business Park Setting:** Ideally located between SR 741 and Lyons Road with quick and convenient access to I-75 and I-675.
- **Strong Accessibility:** Easily accessible to more than 22,000 vehicles per day on SR 741.
- **Abundant Nearby Amenities:** Surrounded by multiple restaurants, retail, and services—ideal for lunch breaks, errands, and client meetings.
- **Tax Advantage Location:** Situated in Miami Township with no city income tax.



**Matt Tunnacliffe**

Commercial Sales & Leasing

513.200.8270

Matt.Tunnacliffe@ApexCommercialGroup.com

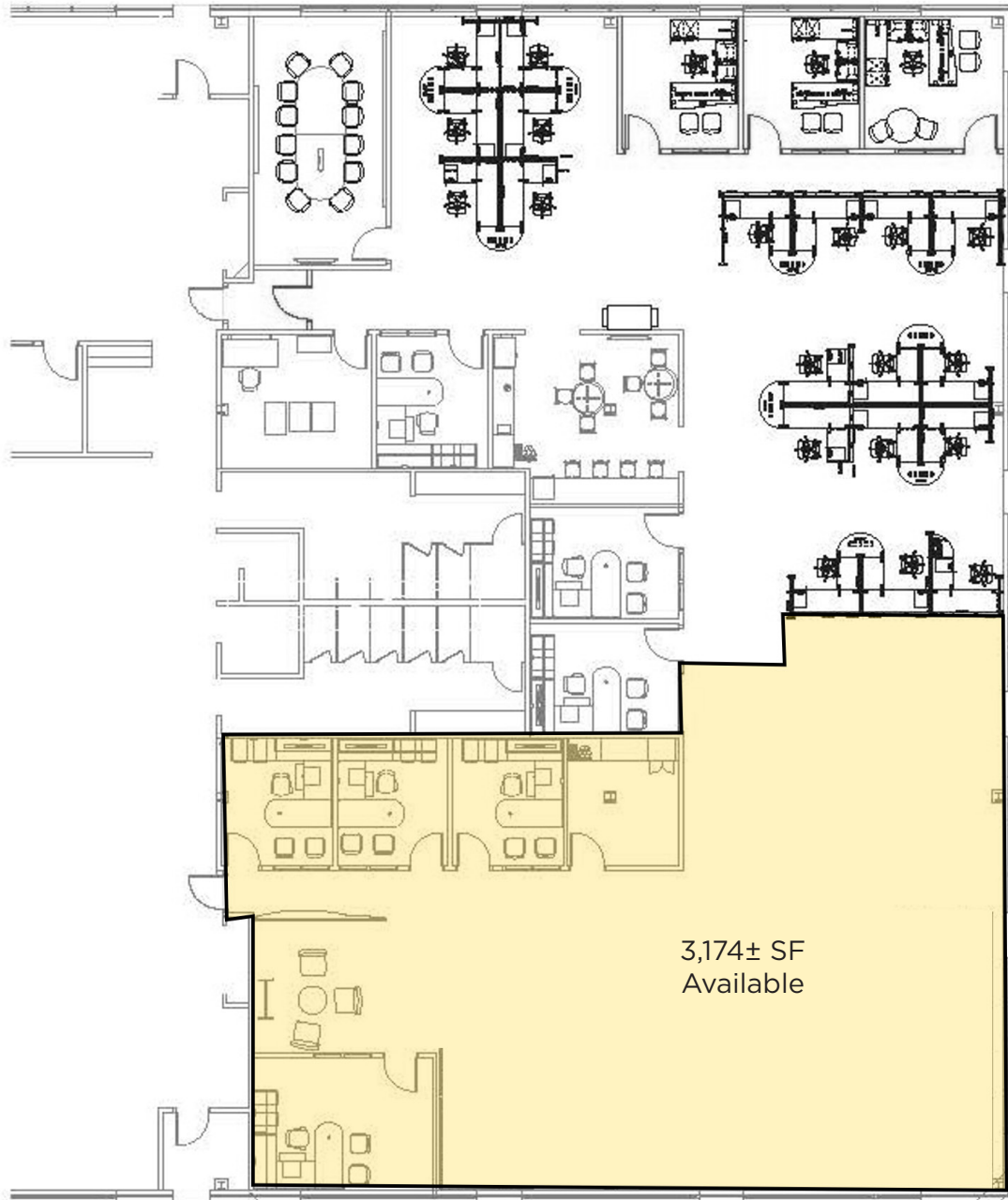
### Demographics

	1 Mile	3 Mile	5 Mile
Total Population	8,716	62,302	143,471
Total Households	4,586	27,765	60,715

# Newmark XI

3571 Newmark Drive  
Miamisburg, Ohio 45342

## Floor Plan



# Newmark XI

3571 Newmark Drive  
Miamisburg, Ohio 45342



## Photo



## Aerial



[ApexCommercialGroup.com](http://ApexCommercialGroup.com)

# Newmark XI

3571 Newmark Drive  
Miamisburg, Ohio 45342

## Aerial

