

# FOR SALE

## ST. MARY'S OF REDFORD



**14750 MANSFIELD STREET**  
**DETROIT, MI 48227**

### PROPERTY HIGHLIGHTS:

- 75,000 SF, three (3) story building situated on 4.94 acres of land
- Convenient location - Located in close proximity to I-96 and Southfield Freeway
- Surrounded by numerous retailers: Advance Auto Parts, Wendy's, Family Dollar, Foot Locker, Forman Mills, Walgreens and more
- Average household income within 5-miles exceeds \$49,867
- Population within 5-miles exceeds 404,166

The information provided herein along with any attachment(s) was obtained from sources believed to be reliable, however, Friedman Real Estate makes no guarantees, warranties, or representations as to the completeness or accuracy of such information and legal counsel is advised. All information provided is subject to verification and no liability for reliance on such information or errors or omissions is assumed. The presentation of this property is submitted subject to errors, omissions, change of price or conditions, prior sale or lease, or withdrawal without notice. Copyright © 2021 Friedman Real Estate. All rights reserved.

FOR MORE INFORMATION **PLEASE CONTACT:**



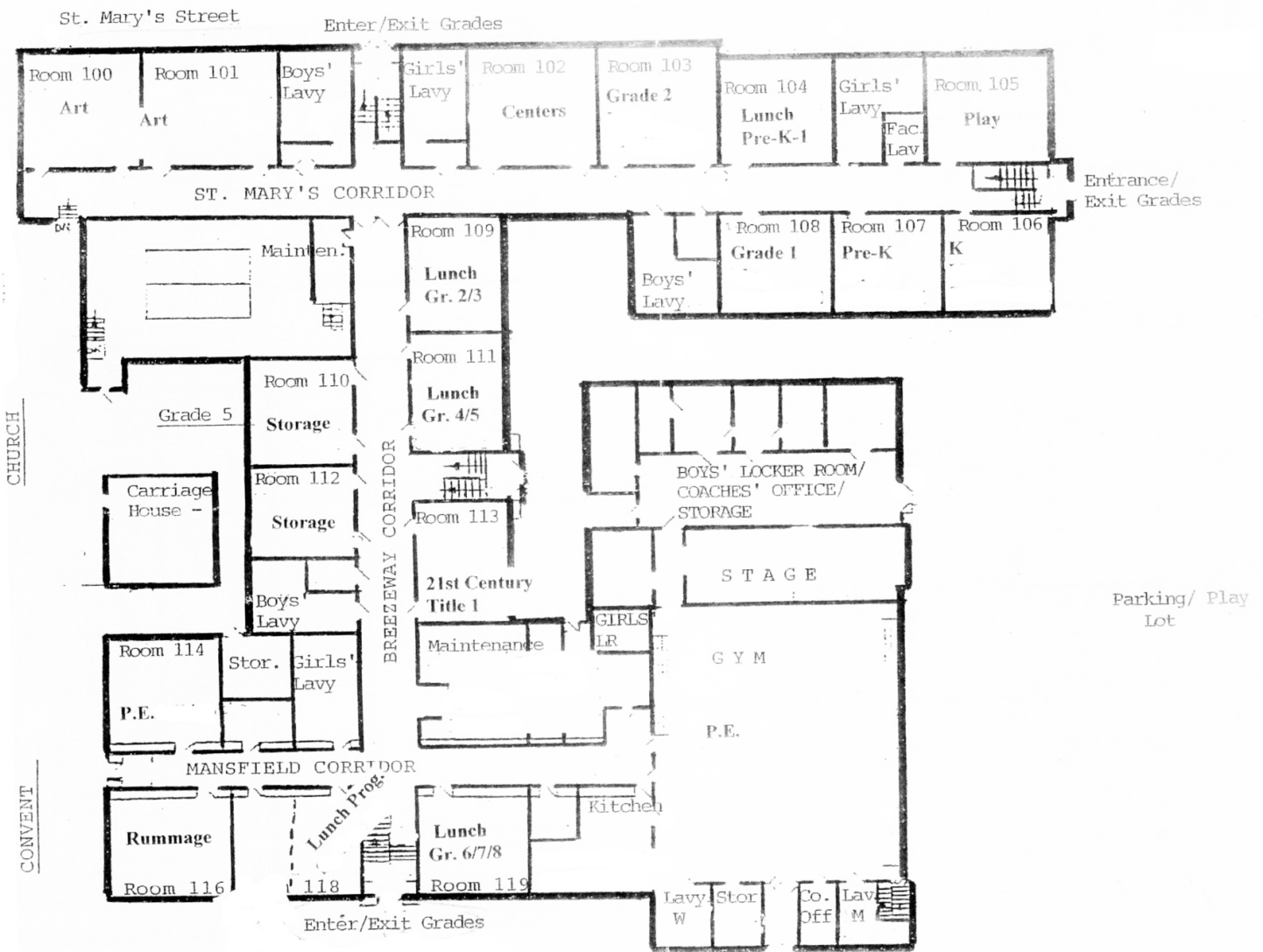
**JOSEPH ROSENBERG**  
joseph.rosenberg@freg.com

**248.324.2000**

**eCODE 286**



# ST. MARY'S OF REDFORD PROPERTY FLOOR PLAN



# ST. MARY'S OF REDFORD PROPERTY FLOOR PLAN

