



# Top of Waikiki

Revolving Restaurant







Opportunity to lease an iconic, one-of-a-kind restaurant, located in the heart of Waikiki. Hawaii's only revolving restaurant located 21 stories above the epicenter of Pacific tourism, Top of Waikiki presents a unique opportunity for culinary investment.

As the only revolving restaurant in Hawaii, Top of Waikiki presents a one-of-a-kind offering above the center of world-famous Kalakaua Avenue. For over 55 years, this iconic spire has softly lit the popular tourist town of Waikiki, turning heads and attracting eyes.

Imagine this unique dining experience – ever-changing panoramas of Waikiki Beach and the Honolulu city lights – paired with mouthwatering cuisine and cocktails. An unforgettable evening.

This is your opportunity to create an extraordinary venue, an impact on millions of travelers stepping foot in Waikiki. With complete FF&E, this turn-key operation is ready to rise to the top.





# FACT SHEET

- 21 stories above Waikiki
- Hawaii's only revolving restaurant (1 revolution per hour)
- Panoramic views of Waikiki Beach and Honolulu
- Located on Kalakaua Avenue in the center of Waikiki
- 150 seating capacity
- Three-tiers of seating with a bar top in the center
- FF&E included
- Recently renovated interior
- Customer and employee parking available for purchase in the Waikiki Business Plaza and Waikiki Shopping Plaza



	Area in Square Feet
20th floors (common areas + kitchen)	3,343
21st floor (revolving platform + lobby)	7,620
Total	10,963

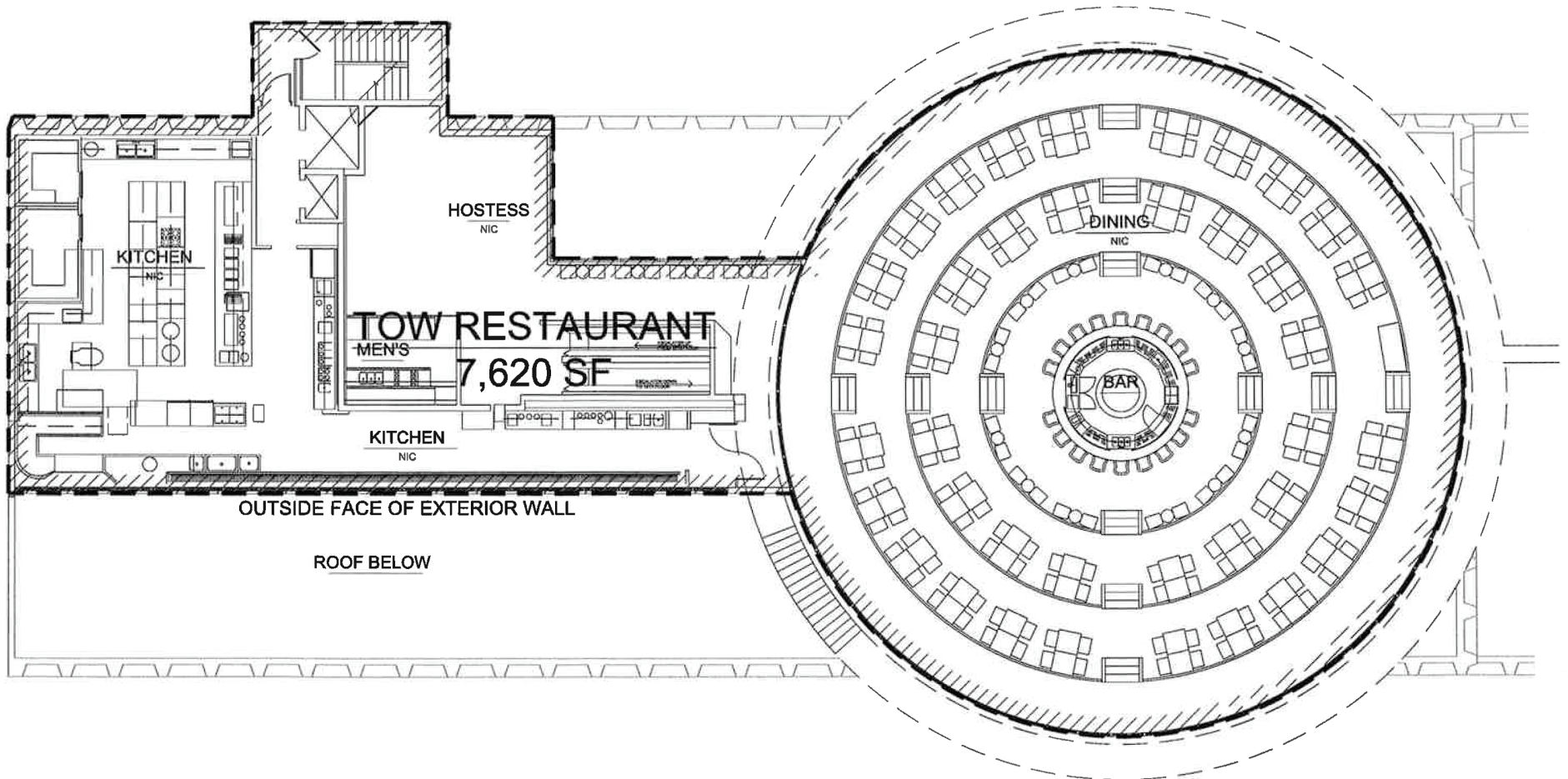
- Kalakaua Avenue street-front signage in the Waikiki Business Plaza
- Building Security patrol 24/7
- Customer restrooms available on the 18th floor
- Employee restrooms available on the 20th floor
- Service elevator from 18th floor to back of house areas
- Convenient office space available for lease



# FLOOR PLAN - 21<sup>st</sup> Floor

Located on the 21st floor of the Waikiki Business Plaza, Top of Waikiki's dining room contains three tiers of seating, plus a bar top in the center of the restaurant, all on a revolving platform that turns once per hour.

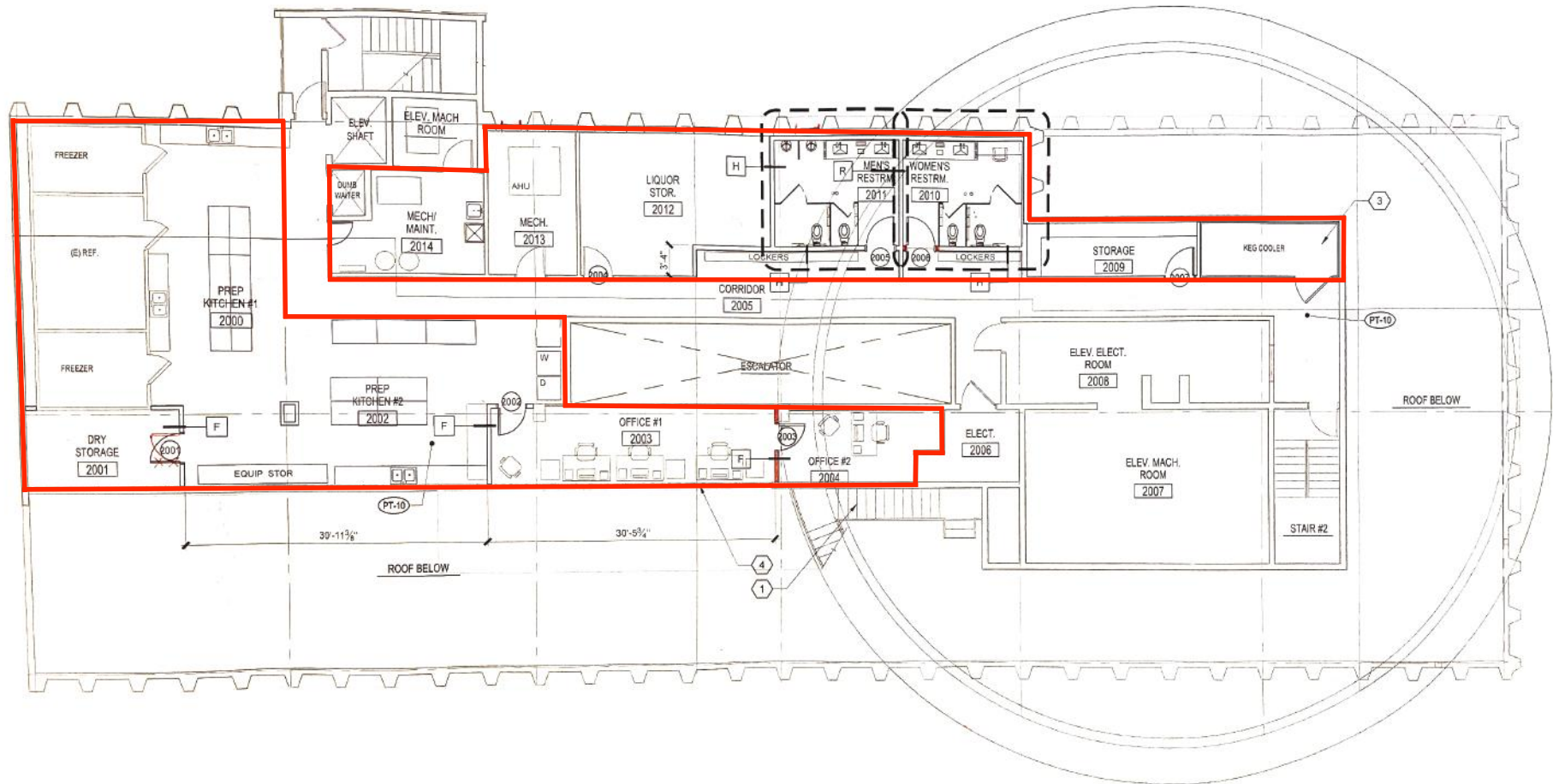
Customers enter the Waikiki Business Plaza, taking the elevator to its 18th floor. Two escalators up is the Top of Waikiki entryway. The modern and inviting lobby and hostess area allow diners to check in, after which they are escorted to the revolving dining area.





# FLOOR PLAN - 20<sup>th</sup> Floor

Just below Top of Waikiki's front of house and main kitchen includes 3,343 square feet of space for smooth-running operations. Prep kitchen, storage, and employee bathrooms are located on the 20th floor, with access to the service elevator as well as back of house stairs to the main kitchen.



















DIAMOND  
HEAD

THE ROYAL  
HAWAIIAN

KALĀKAUA  
AVENUE





The maps and floor plans contained herein are intended only to show the approximate layout and location of the matters depicted. These depictions shall not be: (i) deemed to contain any representations or warranty or (ii) interpreted as creating any obligation to construct or install any improvements, amenities, or facilities, and no person may rely in any way on any other detail or matter depicted herein. All financial projections are estimates only.