

742 – 1,517 SF Office Suites - Stamford Downtown

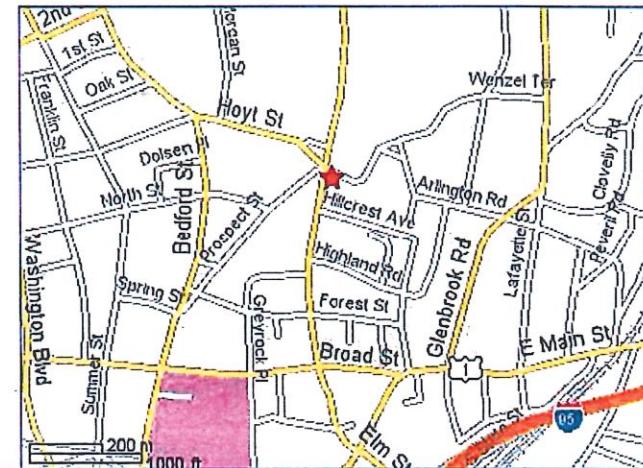
5 Hillandale Avenue, Stamford CT



Specifications

- Location:** Walk to Superior Courthouse and downtown. Very close to Exit 7 of I-95. At intersection of Grove, Strawberry, Prospect and Hoyt Streets.
- Price:**
- 1st Floor, 895 SF @ \$20/SF MG, plus util.
 - 1st Floor, 1,517 SF @ \$20/SF MG, plus util.
 - 2nd Floor, 930 SF @ \$20/SF MG, plus util.
 - 2nd Floor, 742SF @ \$20/SF MG, plus util.
- Term:** 3 -5 years
- Comments:** Ideal for attorney or other professional services use. 2.5/1,000 parking.

Map



Contact Exclusive Agent:

Andrew Paul

Mobile 914-924-3824 • 203-391-6801 • Andrew@pyramidregroup.com

Chris Mailler

Mobile 203-984-1822 • 203-391-6817 • Chris@pyramidregroup.com

Pyramid Real Estate Group

20 Summer Street, Stamford, CT 06901

(203) 348-8566 • Fax (203) 358-9763

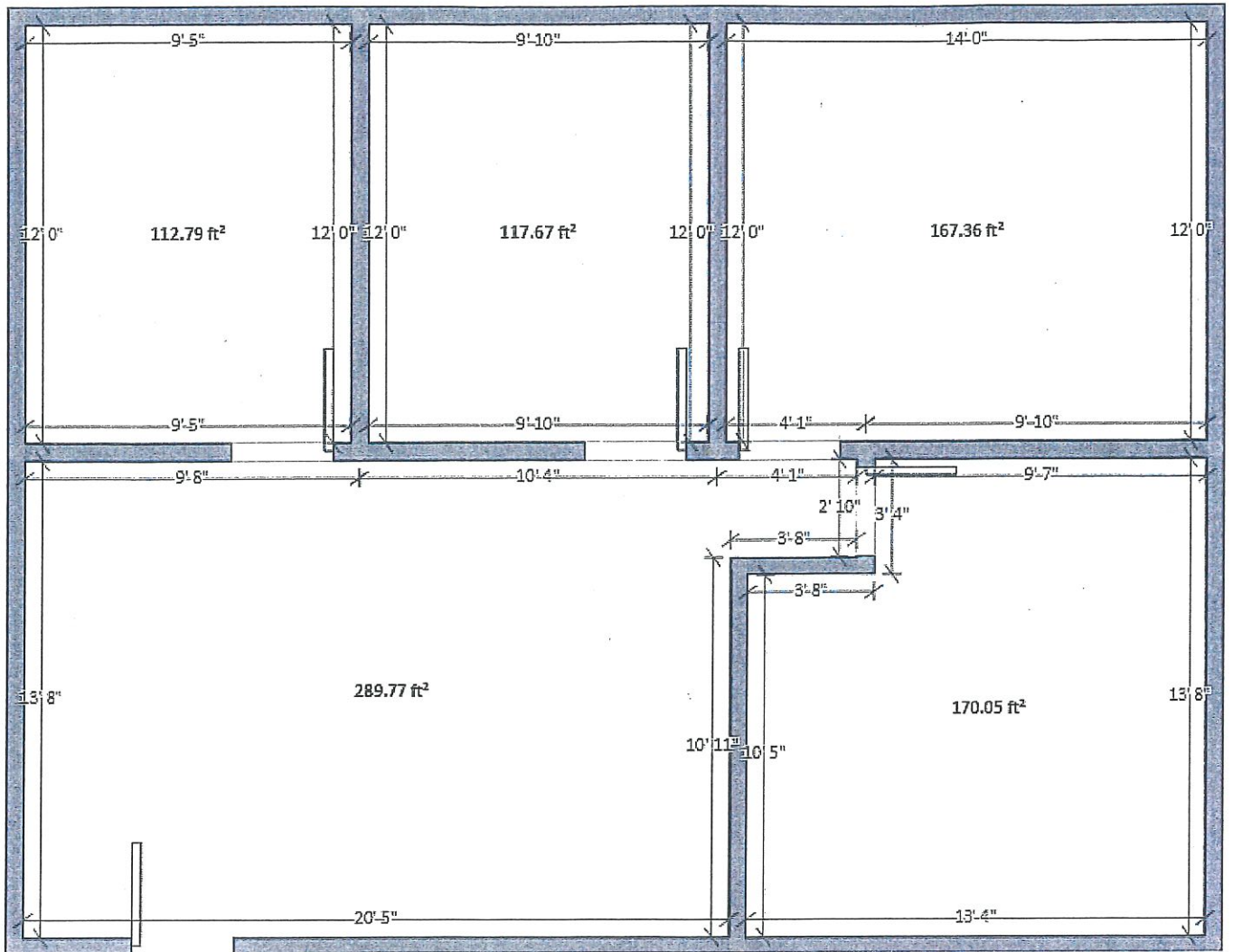
2002 PREM, Inc. The information above has been obtained from sources believed reliable. While we do not doubt its accuracy, we have not verified it and make no guarantee, warranty or representation about it. It is your responsibility to independently confirm its accuracy and completeness. Any projections, opinions, assumptions or estimates used are for example only and do not represent the current or future performance of the property. The value of this transaction to you depends on tax and other factors which should be evaluated by your tax, financial and legal advisors. You and your advisors should conduct a careful, independent investigation of the property to determine to your satisfaction the suitability of the property for your needs.

PYRAMID
Real Estate Group

Brokerage • Consulting • Management Services • Construction

www.pyramidregroup.com

Suite 100 – 895sf (34'2" by 26'2")



5 Hillandale Ave, Stamford, CT 06902

Contact Exclusive Agent:

Andrew Paul
 Mobile 914-924-3824 • 203-391-6801 • Andrew@pyramidregroup.com

Chris Mailler
 Mobile 203-984-1822 • 203-391-6817 • Chris@pyramidregroup.com

Pyramid Real Estate Group

20 Summer Street, Stamford, CT 06901

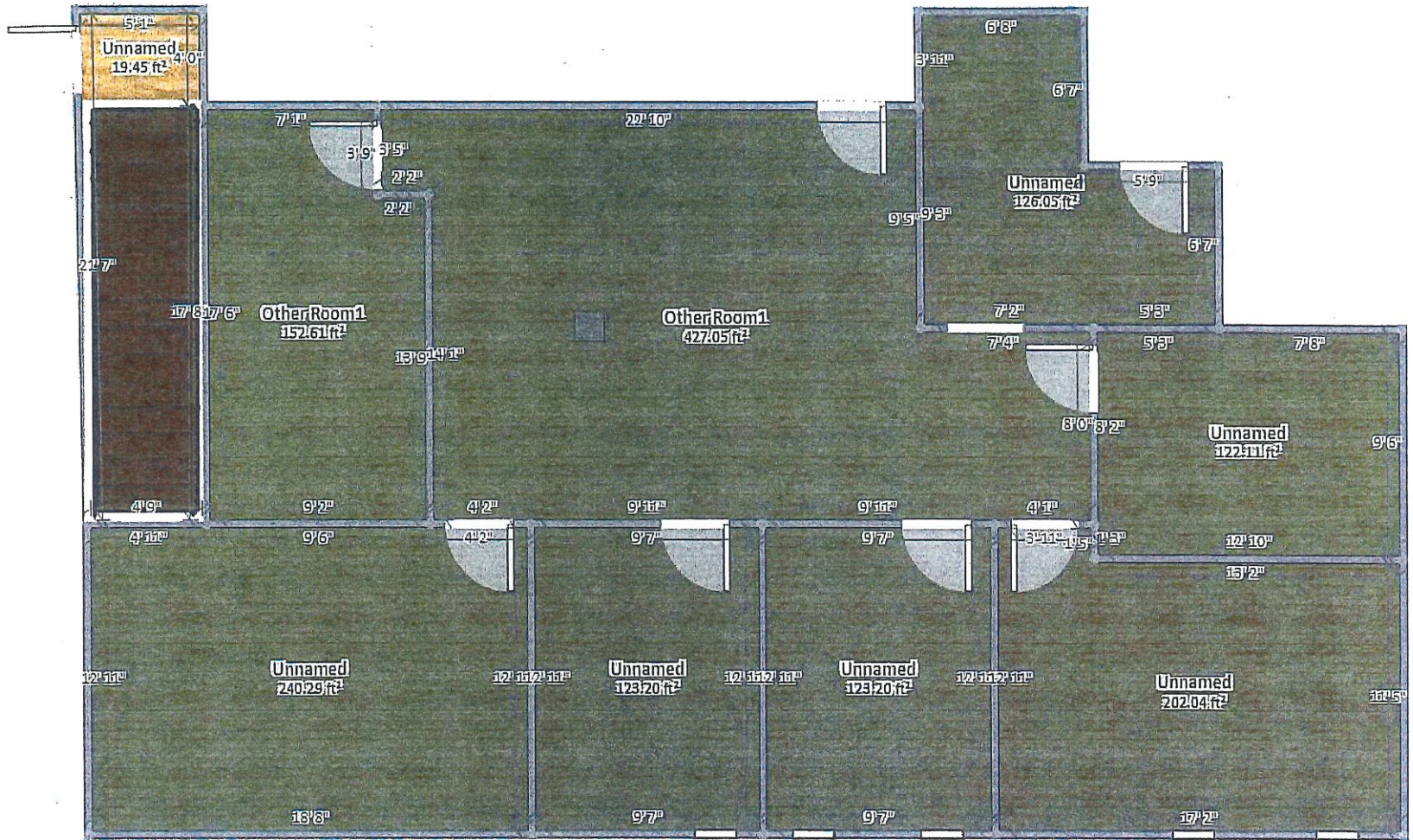
(203) 348-8566 • Fax (203) 358-9763

2002 PYRAMID, Inc. The Information above has been obtained from sources believed reliable. While we do not doubt its accuracy, we have not verified it and make no guarantee, warranty or representation about it. It is your responsibility to independently confirm its accuracy and completeness. Any projections, opinions, assumptions or estimates used are for example only and do not represent the current or future performance of the property. The value of this transaction to you depends on tax and other factors which should be evaluated by your tax, financial and legal advisors. You and your advisors should conduct a careful, independent investigation of the property to determine to your satisfaction the suitability of the property for your needs.



Brokerage • Consulting • Management Services • Construction

www.pyramidregroup.com



5 Hillendale Ave, Stamford CT 06902

Contact Exclusive Agent:

Andrew Paul

Mobile 914-924-3824 • 203-391-6801 • Andrew@pyramidregroup.com

Chris Mailler

Mobile 203-984-1822 • 203-391-6817 • Chris@pyramidregroup.com

Pyramid Real Estate Group

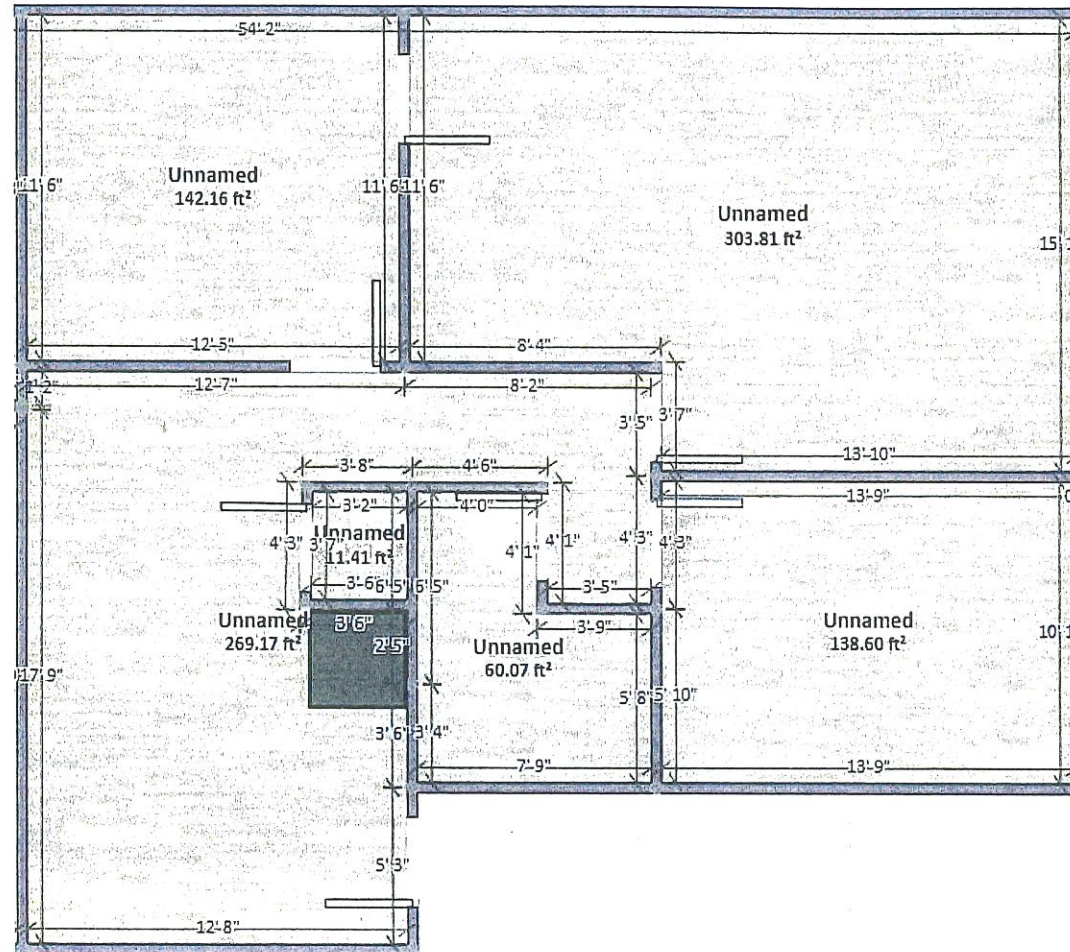
20 Summer Street, Stamford, CT 06901

(203) 348-8566 • Fax (203) 358-9763

2002 PREM, Inc. The Information above has been obtained from sources believed reliable. While we do not doubt its accuracy, we have not verified it and make no guarantee, warranty or representation about it. It is your responsibility to independently confirm its accuracy and completeness. Any projections, opinions, assumptions or estimates used are for example only and do not represent the current or future performance of the property. The value of this transaction to you depends on tax and other factors which should be evaluated by your tax, financial and legal advisors. You and your advisors should conduct a careful, independent investigation of the property to determine to your satisfaction the suitability of the property for your needs.



Suite 200
2nd Floor
930 sf



5 Hillendale Avenue, Stamford CT 06902

Contact Exclusive Agent:

Andrew Paul

Mobile 914-924-3824 • 203-391-6801 • Andrew@pyramidregroup.com

Chris Mailler

Mobile 203-984-1822 • 203-391-6817 • Chris@pyramidregroup.com

Pyramid Real Estate Group

20 Summer Street, Stamford, CT 06901

(203) 348-8566 • Fax (203) 358-9763

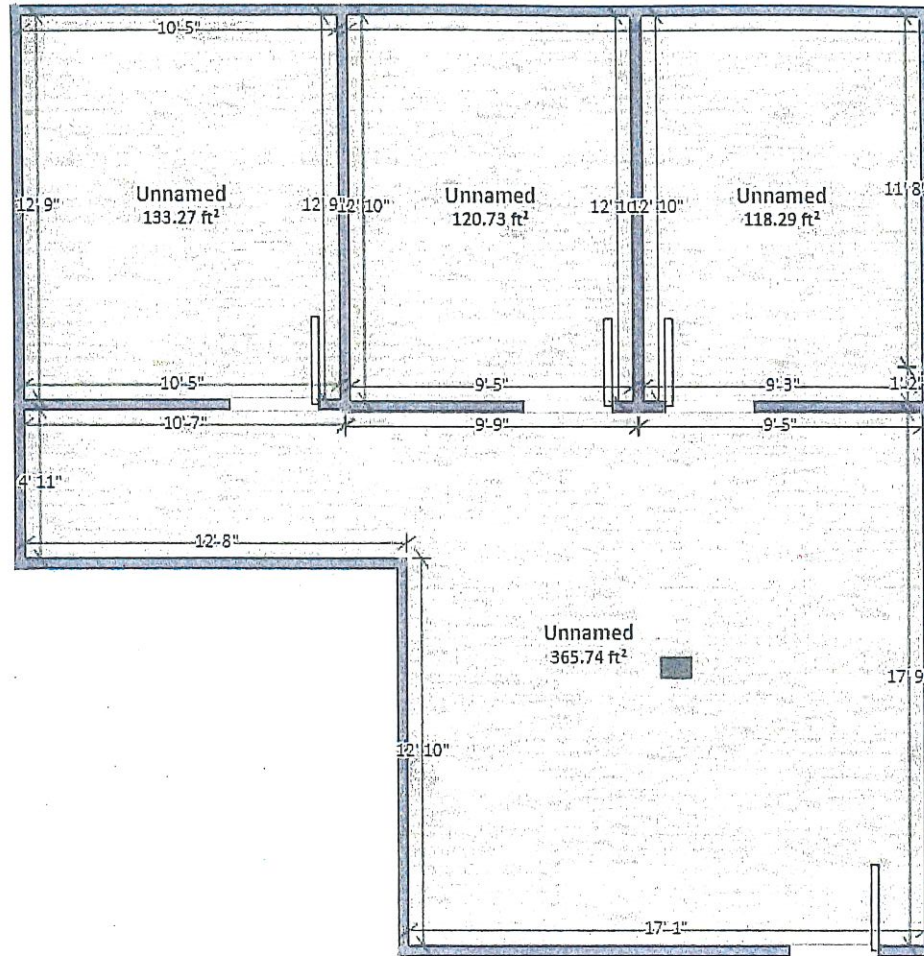
2002 PREM, Inc. The information above has been obtained from sources believed reliable. While we do not doubt its accuracy, we have not verified it and make no guarantee, warranty or representation about it. It is your responsibility to independently confirm its accuracy and completeness. Any projections, opinions, assumptions or estimates used are for example only and do not represent the current or future performance of the property. The value of this transaction to you depends on tax and other factors which should be evaluated by your tax, financial and legal advisors. You and your advisors should conduct a careful, independent investigation of the property to determine to your satisfaction the suitability of the property for your needs.

PYRAMID
Real Estate Group

Brokerage • Consulting • Management Services • Construction

www.pyramidregroup.com

Suite 201
2nd Floor
742sq



5 Hillandale Avenue, Stamford CT 06902

Contact Exclusive Agent:

Andrew Paul
Mobile 914-924-3824 • 203-391-6801 • Andrew@pyramidregroup.com

Chris Mailler
Mobile 203-984-1822 • 203-391-6817 • Chris@pyramidregroup.com

Pyramid Real Estate Group

20 Summer Street, Stamford, CT 06901

(203) 348-8566 • Fax (203) 358-9763

2002 PREM, Inc. The information above has been obtained from sources believed reliable. While we do not doubt its accuracy, we have not verified it and make no guarantee, warranty or representation about it. It is your responsibility to independently confirm its accuracy and completeness. Any projections, opinions, assumptions or estates used are for example only and do not represent the current or future performance of the property. The value of this transaction to you depends on tax and other factors which should be evaluated by your tax, financial and legal advisors. You and your advisors should conduct a careful, independent investigation of the property to determine to your satisfaction the suitability of the property for your needs.

PYRAMID
Real Estate Group

Brokerage • Consulting • Management Services • Construction

www.pyramidregroup.com