

ProMed Medical Building of Yuma

2270 Ridgeview Drive, Yuma, AZ 85364



Now Leasing



Bryan McKenney
(949) 478 - 0087 | LIC#01505792
bmckenney@cypresswestpartners.com

ProMed Medical Building of Yuma

2270 Ridgeview Drive, Yuma, AZ 85364



FEATURES

- 47,813 SF
- 3 Story Medical Building
- Professionally Managed
- Located directly across from Yuma Regional Medical Center
- An average daily traffic count in excess of 30,000 vehicles
- Best in Class Medical Building
- Elevator Served



ProMed Medical Building of Yuma

2270 Ridgeview Drive, Yuma, AZ 85364

BIRD'S EYE-VIEW



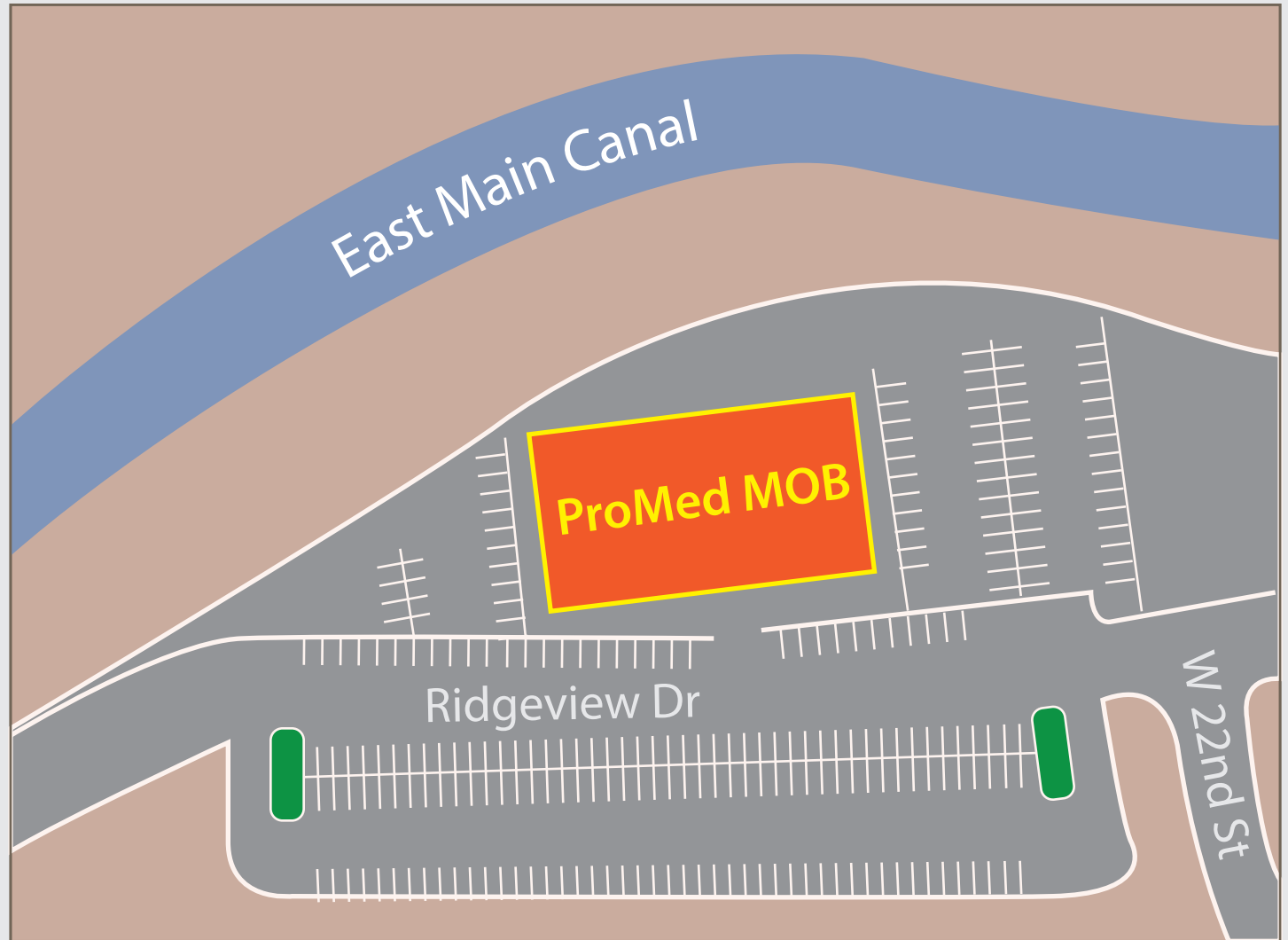
Bryan McKenney
(949) 478 - 0087 | LIC#01505792
bmckenney@cypresswestpartners.com

Now Leasing

ProMed Medical Building of Yuma

2270 Ridgeview Drive, Yuma, AZ 85364

SITE PLAN



Bryan McKenney
(949) 478 - 0087 | LIC#01505792
bmckenney@cypresswestpartners.com

Now Leasing

ProMed Medical Building of Yuma

2270 Ridgeview Drive, Yuma, AZ 85364

FLOOR PLAN

AVAILABLE SUITE:

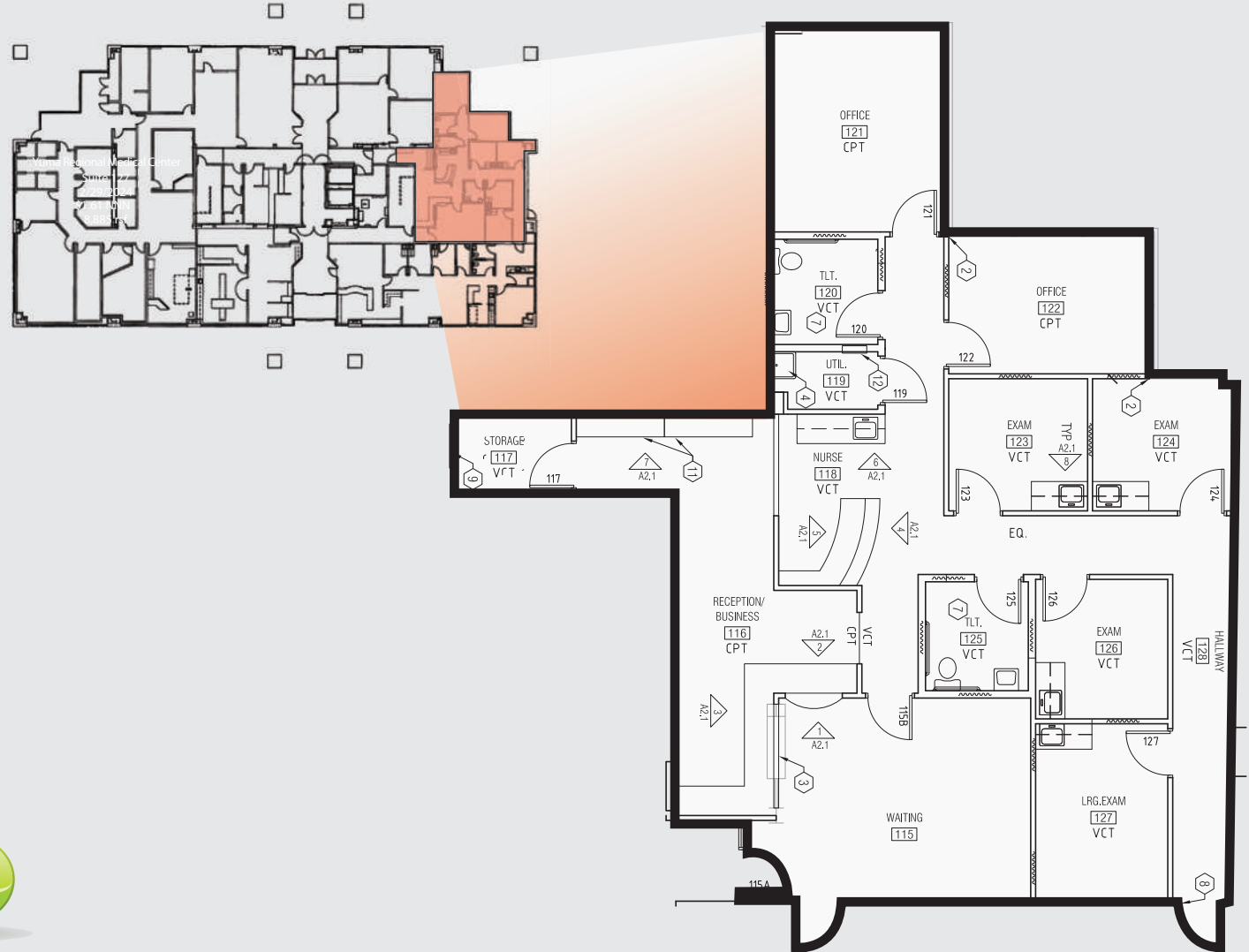
Suite 128 - 2,146 rsf

LEASE RATE:

\$1.95 NNN

SUITE DESCRIPTION:

- 2 Offices
- Nurses' Station
- 3 Exam Rooms
- 1 Large Exam Room
- Storage and Utility Rooms
- 2 In-Suite Restrooms
- Reception/Admin



Coming soon

Click! for Virtual Tour



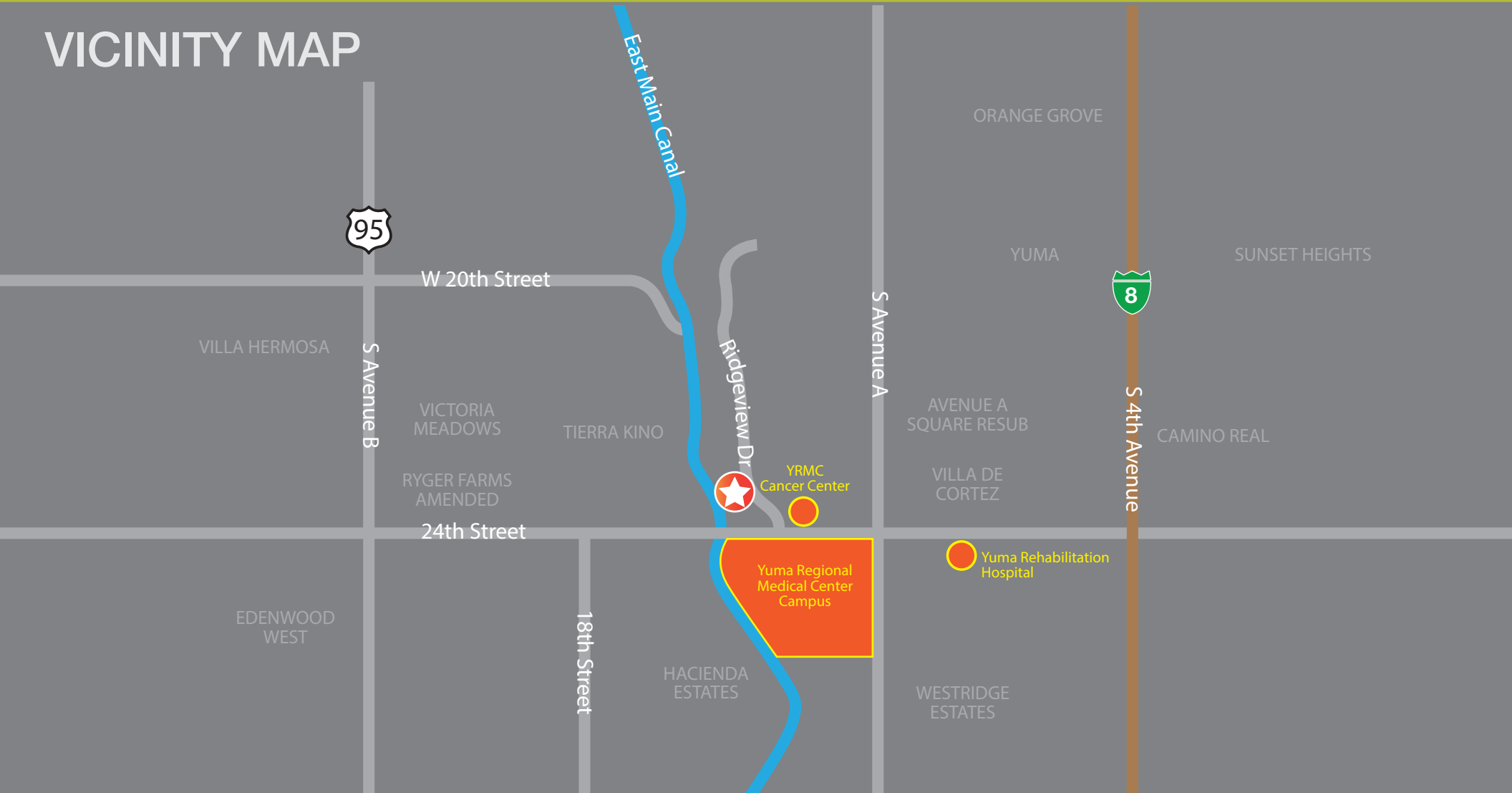
Bryan McKenney
(949) 478 - 0087 | LIC#01505792
bmckenney@cypresswestpartners.com

Now Leasing

ProMed Medical Building of Yuma

2270 Ridgeview Drive, Yuma, AZ 85364

VICINITY MAP



Now Leasing



Bryan McKenney
(949) 478 - 0087 | LIC#01505792
bmckenney@cypresswestpartners.com