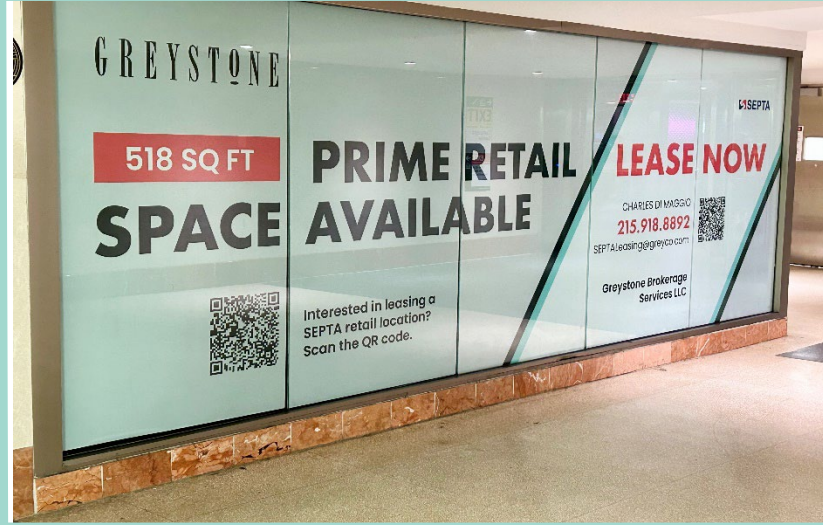


# GREYSTONE

*Exclusive Brokers  
for Suburban Station*

# Suburban Station Retail Opportunity



## PROPERTY DETAILS

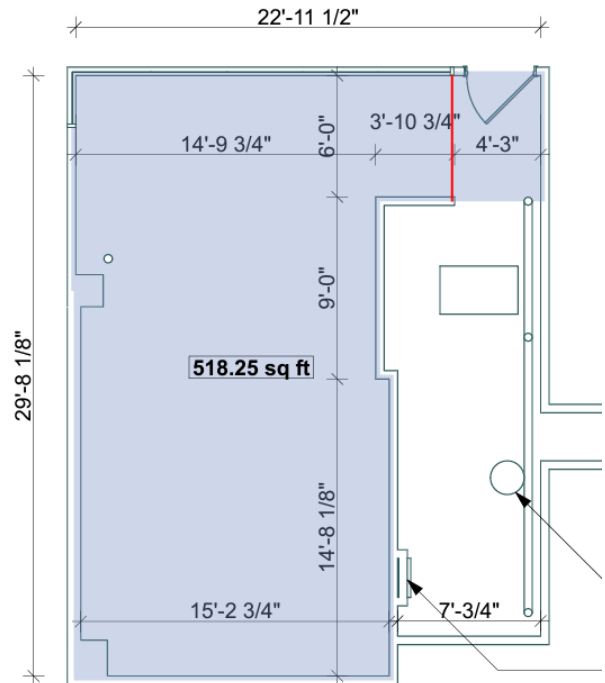
The available space is located within the main concourse of Suburban Station, directly adjacent to the entrance to the Comcast Center, with prime visibility with enclosed glass frontage. The space includes an area of approximately 518 SF.

We welcome creative uses for this space including dry retail, food service, and coffee/beverage.

SEPTA's Suburban Station is centrally located in Center City Philadelphia, and serves as a vital link between various transit modes including regional rail, subway, and bus services. The station's centrality captures both commuter and office worker traffic.

**Size:** 518 SF

**Daily Ridership:** ±13,000



**For more information please contact:**

Greystone Brokerage Services LLC

Charles Di Maggio | (215) 918-8892

SEPTAleasing@greyco.com

**AVAILABLE FOR LEASE**

**± 518 SF | RETAIL SPACE**

**UNIT #110**

