

# 1 PRINCIPIO PARKWAY

BUILDING C-2

## 200,100 SF DISTRIBUTION CENTER FOR LEASE



### PREMIER LOCATION

New I-95 interchange at  
Belvidere Road and I-95



### ENTERPRISE ZONE

Enterprise Zone allowing  
for real estate and  
employee tax credits

PROJECT BY:



LEASING BY:







MARYLAND  
40



INTERSTATE  
95

BELVIDERE ROAD



FUTURE I-95 INTERCHANGE  
UNDER CONSTRUCTION



amazon



RH  
RESTORATION HARDWARE

Smithfield

BUILDING C-2  
200,100 SF

# ENTERPRISE ZONE INCENTIVES

Ten-year credit against local real property taxes on real property improvements. Credit is 80% the first five years, and decreases 10% annually to 30% in the tenth and final year.

# SITE C-2



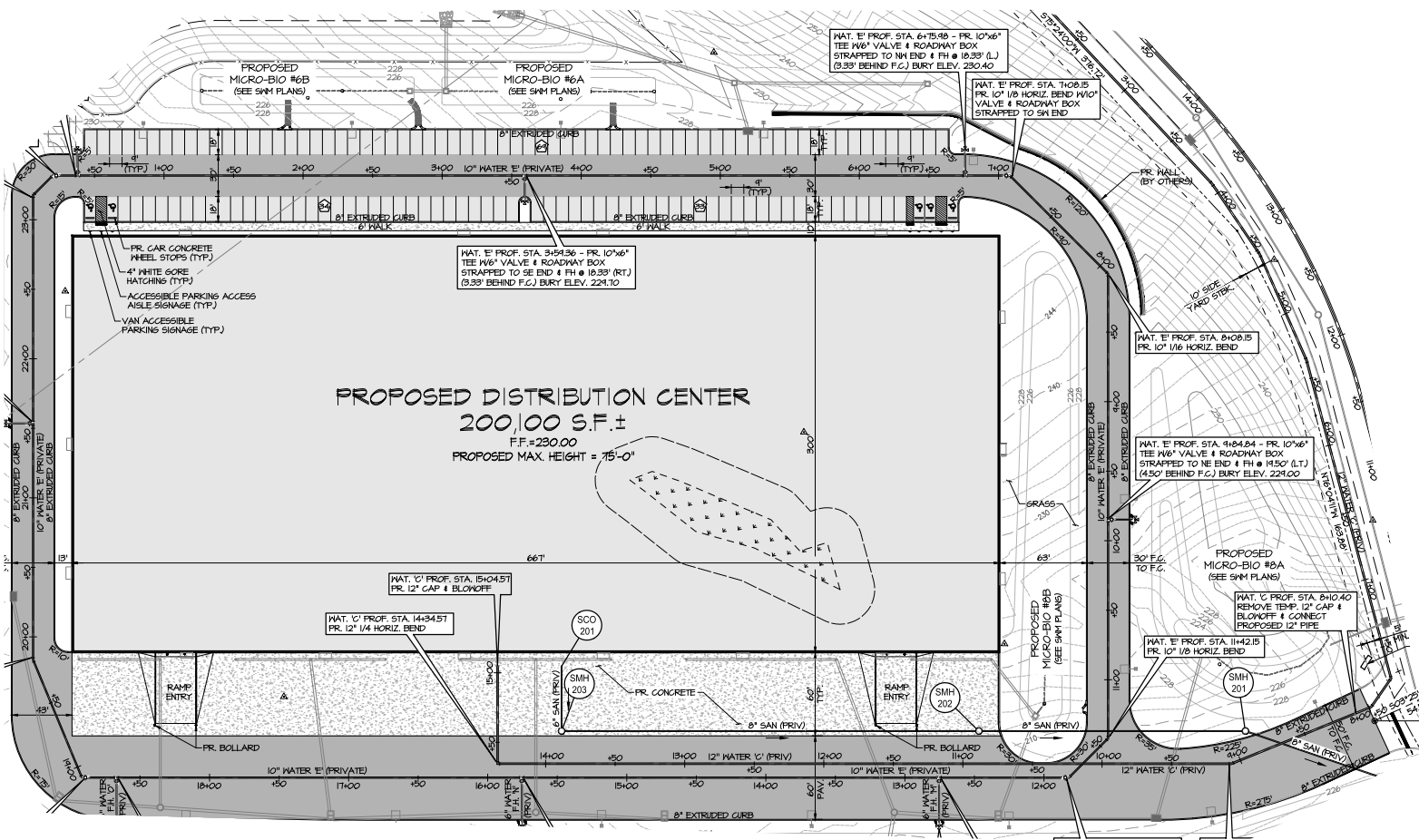
# 1 PRINCIPIO PARKWAY

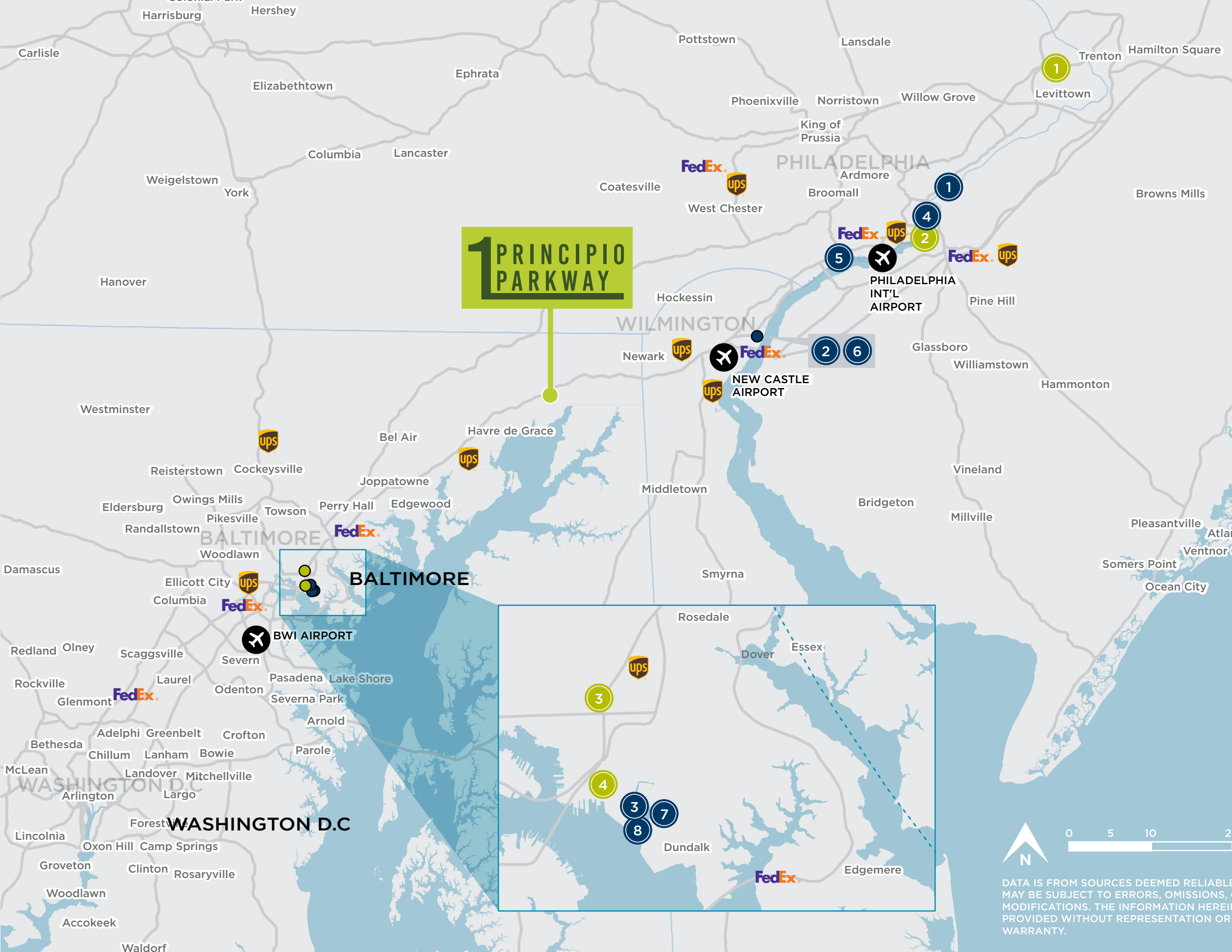
BUILDING C & BUILDING C1

## BUILDING C-2 200,100 SF

### BUILDING C-2 SPECS

<b>Building SF</b>	200,100 SF
<b>Building Dimensions</b>	300' x 667'
<b>Office</b>	Built-to-suit
<b>Clear Height</b>	38'
<b>Configuration</b>	Rear Load
<b>Column Spacing</b>	48' x 51'
<b>Fire Protection</b>	ESFR
<b>Lighting</b>	LED
<b>Power</b>	1 - 3,000 amp service
<b>Construction</b>	Concrete Tilt-Up
<b>Dock Doors</b>	34
<b>Drive-in Doors</b>	2
<b>Auto Parking</b>	190
<b>Trailer Parking</b>	25
<b>Floor</b>	7"
<b>Warehouse Heat</b>	Cambridge Air Distribution Units / 1 Air Change PH
<b>Water/Sewer</b>	Public-Artesian
<b>Gas &amp; Electric Provider</b>	Chesapeake Utilities / Delmarva Power
<b>Telecommunication Provider</b>	Verizon FIOS / Comcast Business





## PORTS & HUBS

- 1 Port of Philadelphia
- 2 Port of Wilmington
- 3 Port of Baltimore

## OCEAN PORTS

- 4 Port of Philadelphia (Packer Ave)
- 5 Penn Terminals
- 6 Port of Wilmington, DE
- 7 Seagirt Marine Terminal
- 8 Dundalk Marine Terminal

## RAILROAD TERMINALS

- 1 Norfolk Southern Intermodal Yard
- 2 CSX Intermodal Yard
- 3 Norfolk Southern Intermodal Yard
- 4 CSX Intermodal Yard

**OVERNIGHT ACCESS  
TO A POPULATION OF  
90 MILLION  
&  
1/3 OF THE NATIONAL  
PURCHASING INCOME**



DATA IS FROM SOURCES DEEMED RELIABLE. IT MAY BE SUBJECT TO ERRORS, OMISSIONS, AND MODIFICATIONS. THE INFORMATION HEREIN IS PROVIDED WITHOUT REPRESENTATION OR WARRANTY.





## DISTANCES TO:

I-95	3.9 MILES	Washington, DC	80 MILES
Baltimore, MD	52 MILES	I-81	82 MILES
Philadelphia, PA	61 MILES	New York	156 MILES



**STEWART  
PROPERTIES**

**DAVID DANNENFELSER**  
MANAGING DIRECTOR  
+1 410 685 9884  
[david.dannenfelser@cushwake.com](mailto:david.dannenfelser@cushwake.com)

**TYLER BOYKIN**  
MANAGING DIRECTOR  
+1 717 231 7292  
[tyler.boykin@cushwake.com](mailto:tyler.boykin@cushwake.com)



Cushman & Wakefield | One East Pratt Street, Suite 700 | [cushmanwakefield.com](http://cushmanwakefield.com)