



1024 S 25th St

1024 S 25th St, Van Buren, AR 72956

Jennifer Brannon

TSMW

1024 S 25th St, Van Buren, AR 72956

jgbrannon@hotmail.com

(479) 462-6886

1024 S 25th St

Upon Request

There are LOTS of possibilities for this 28,000 sq ft warehouse/building. It is located in Industrial Park with easy access to I-540 and I-40. This building will accommodate large equipment, machinery, and inventory. Features 3 drive-in doors, 2 overhead cranes, and 2 external docks, 1500 sq ft of office space, and large fenced in area....

- Direct access to I-540 and I-40
- Railroad access
- 2 overhead cranes
- 2 docks
- Large fenced in lot

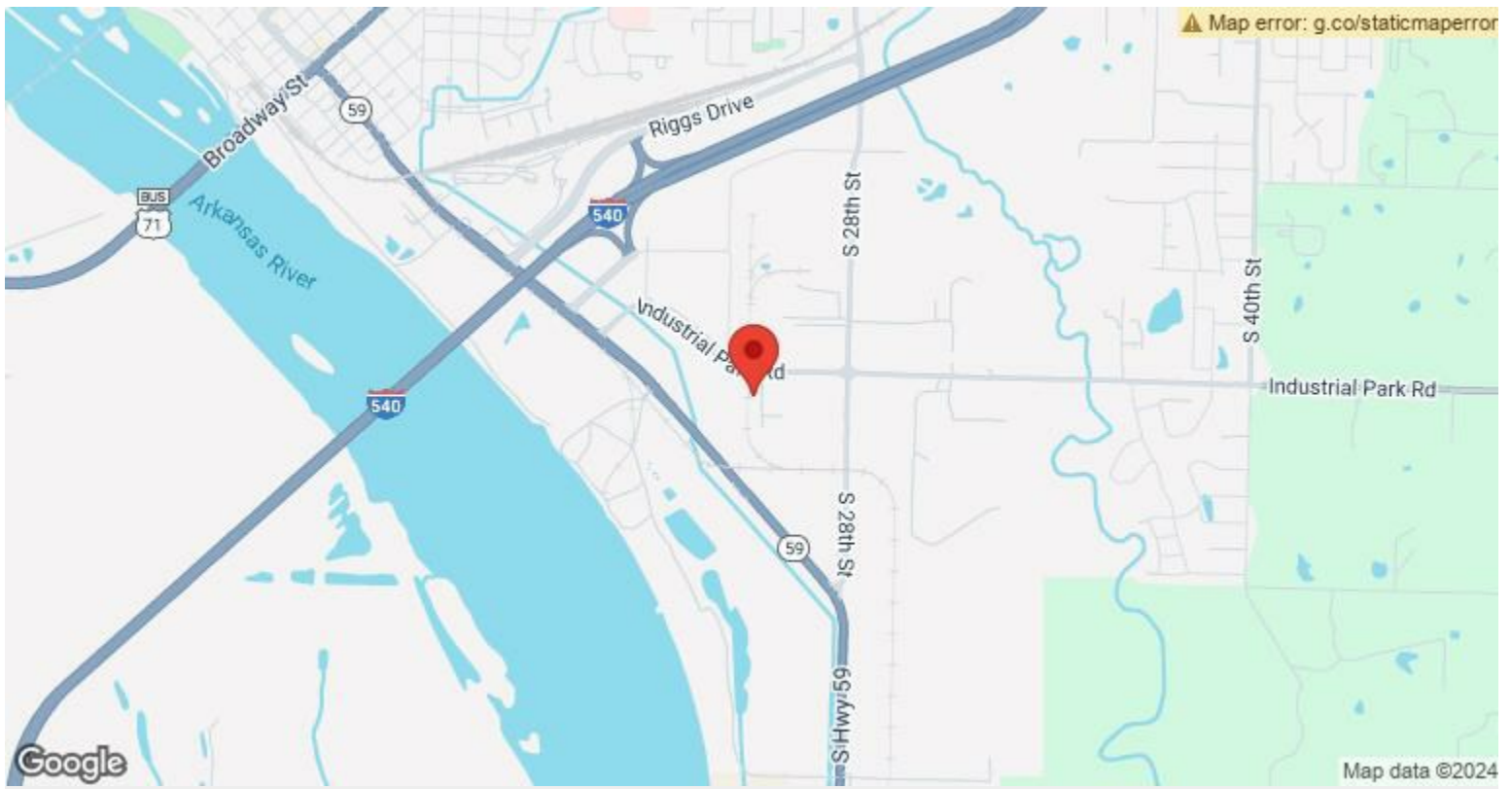


Rental Rate:	Upon Request
Property Type:	Industrial
Property Subtype:	Distribution
Rentable Building Area:	35,000 SF
Year Built:	1981
Rental Rate Mo:	Upon Request

1

1st Floor

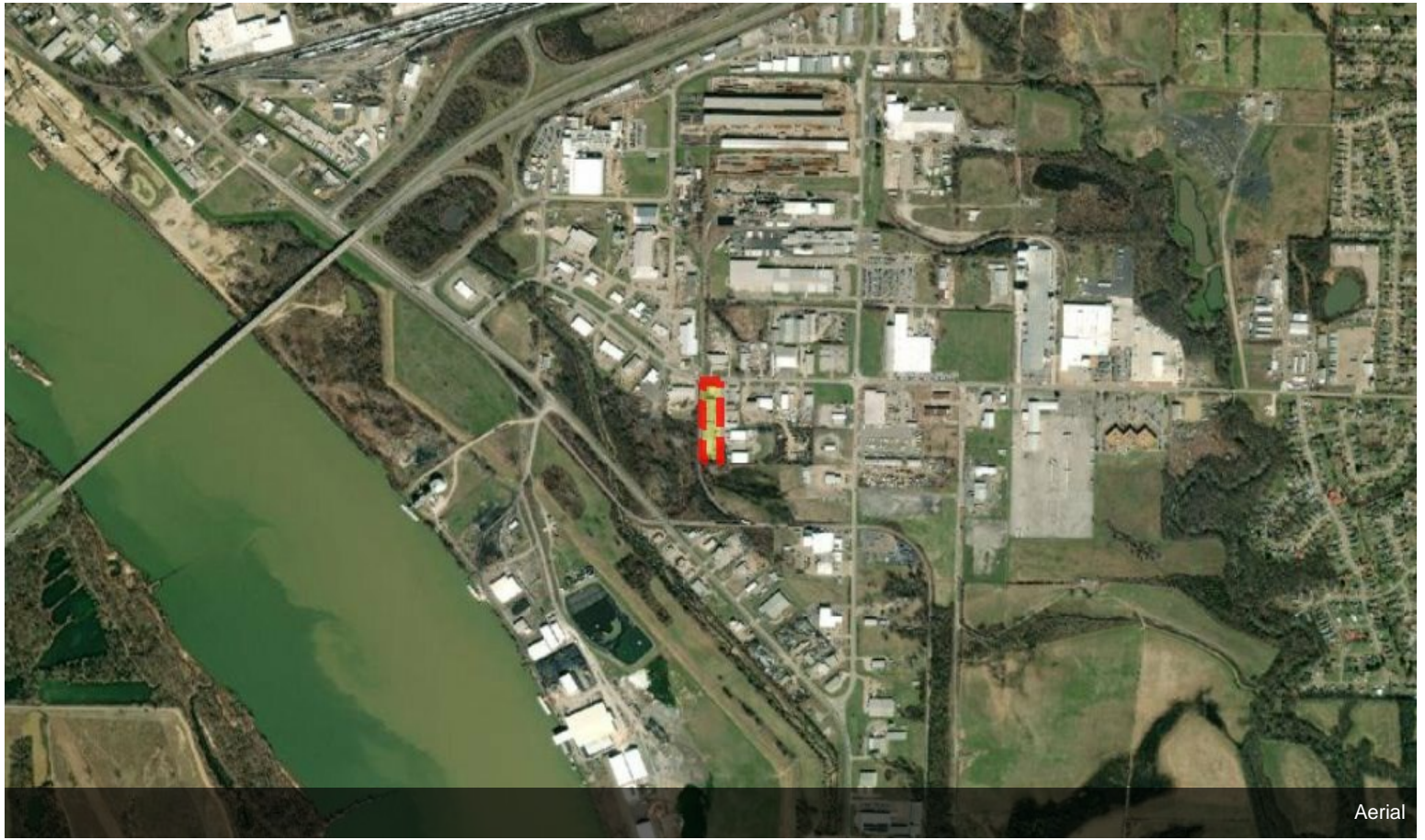
Space Available	28,000 SF
Rental Rate	Upon Request
Date Available	December 01, 2024
Service Type	TBD
Space Type	Relet
Space Use	Industrial
Lease Term	Negotiable



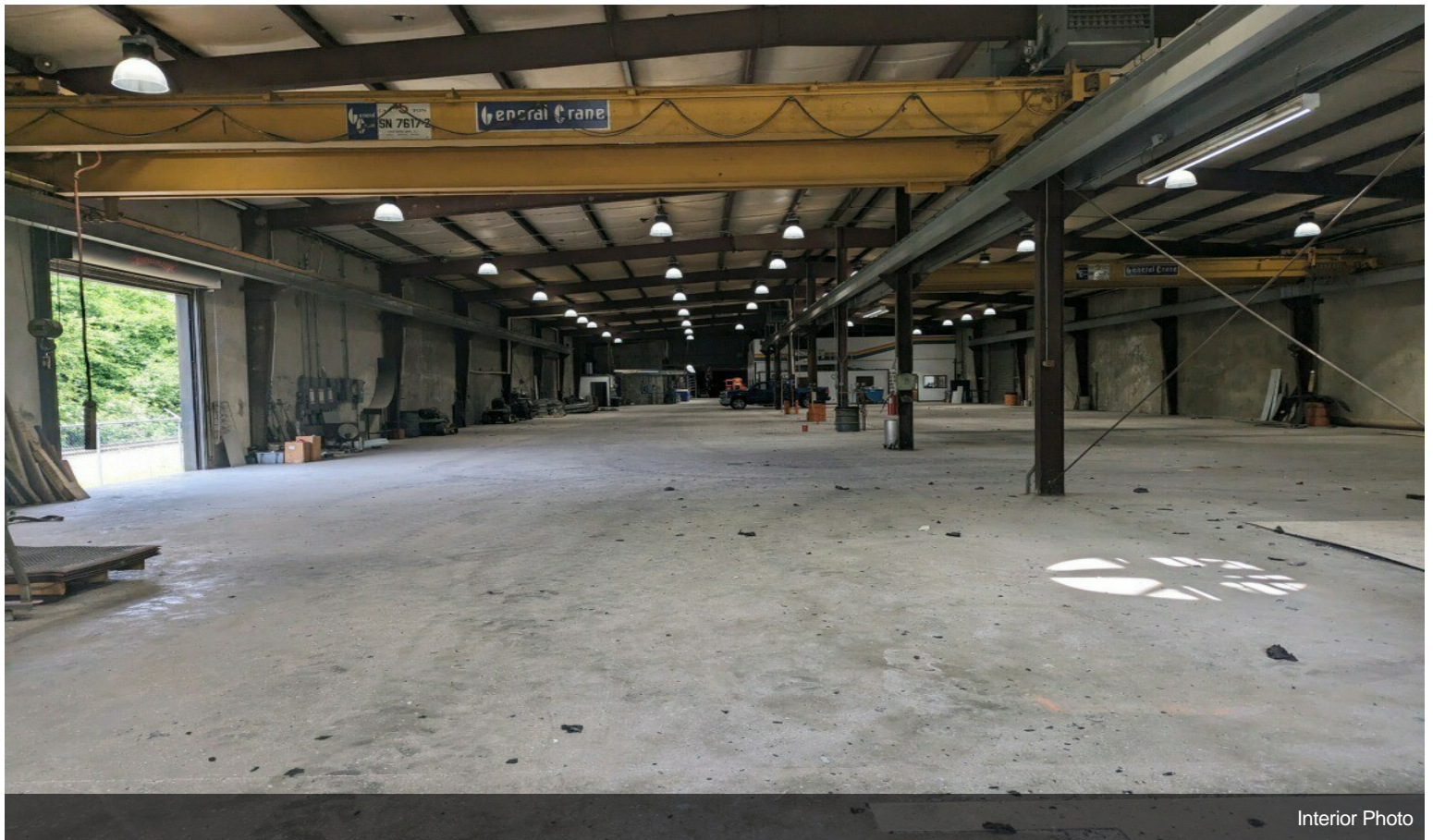
1024 S 25th St, Van Buren, AR 72956

There are LOTS of possibilities for this 28,000 sq ft warehouse/building. It is located in Industrial Park with easy access to I-540 and I-40. This building will accommodate large equipment, machinery, and inventory. Features 3 drive-in doors, 2 overhead cranes, and 2 external docks, 1500 sq ft of office space, and large fenced in area.

Property Photos



Aerial



Interior Photo

Property Photos



Interior Photo

Interior Photo