

FOR SALE OR LEASE

INDUSTRIAL LAND
9170 Latty Ave. | Hazelwood, MO 63134



PROPERTY HIGHLIGHTS

- 5.4 Acres
- Outstanding location in the heart of St. Louis County
- Immediate access to I-70, I-170, and I-270
- Six miles from St. Louis Lambert International Airport
- Perfect for industrial development, truck parking, storage facility
- Sub dividable, fenced and rocked
- Ideal for outdoor storage
- Opportunity Zone and Enterprise Zone
- Zoned I-2 (Heavy Industrial District) City of Hazelwood
- **SALE PRICE: \$1,300,000**
- **LEASE RATE: \$8,100/MONTH**



CONTACT US:

Cameron Cook

Associate

Mobile: 314-480-2022

ccook@gundakercommercial.com

Jim Alexander

Vice President

Mobile: 314-954-0540

jalexander@gundakercommercial.com



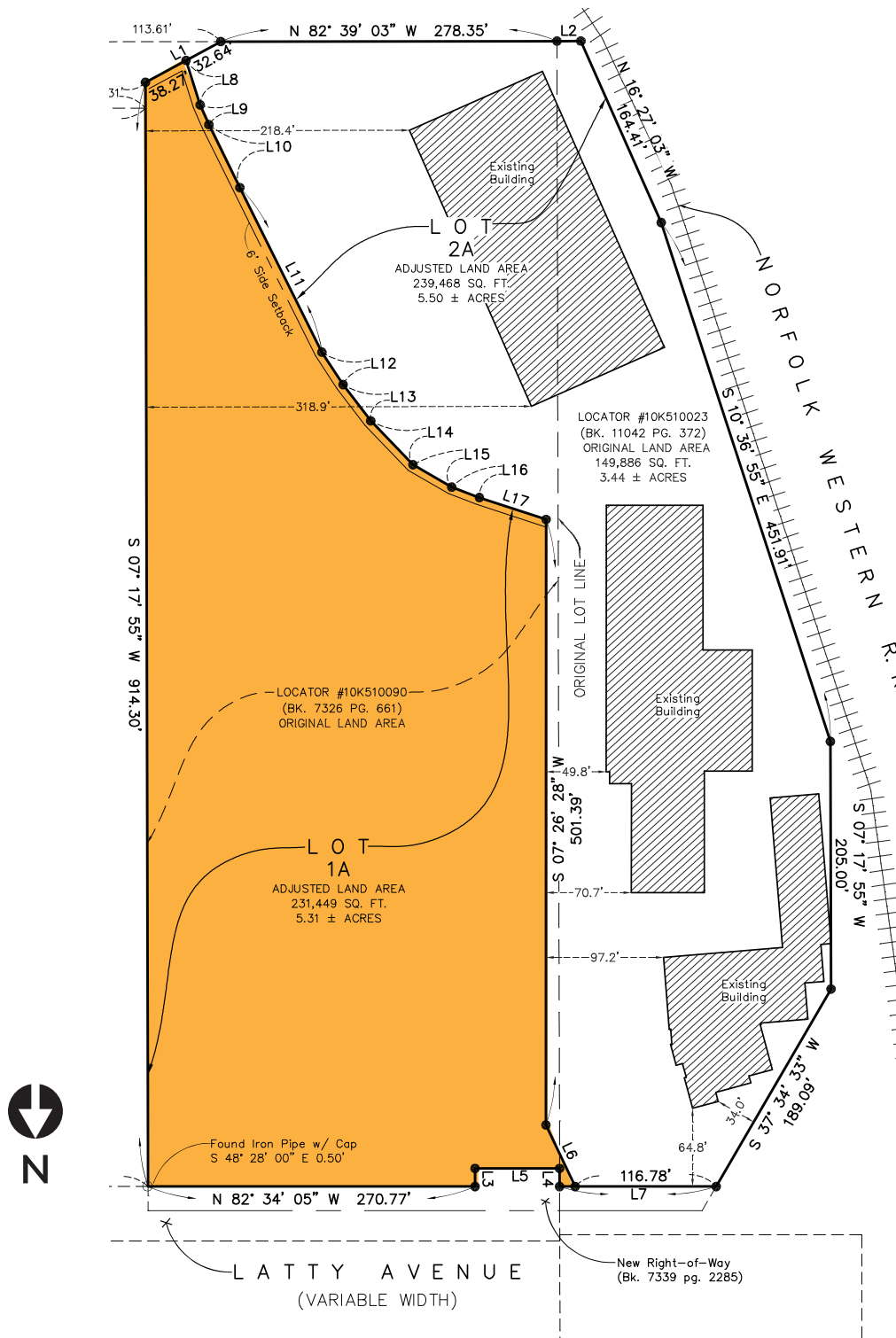
GUNDAKER
COMMERCIAL GROUP

55 Westport Plaza Drive, Ste. 200
St. Louis, MO 63146

M: 636-728-5100 | F: 636-728-5140

gundakercommercial.com [in](#) [@](#) [f](#)

SITE PLAN



CONTACT US:

Cameron Cook

Associate

Mobile: 314-480-2022

ccook@gundakercommercial.com

Jim Alexander

Vice President

Mobile: 314-954-0540

jalexander@gundakercommercial.com

GUNDAKER
COMMERCIAL GROUP

55 Westport Plaza Drive, Ste. 200

St. Louis, MO 63146

M: 636-728-5100 | F: 636-728-5140

gundakercommercial.com [in](#) [@](#) [f](#)