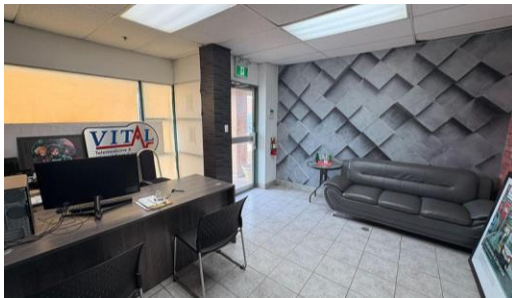


INDUSTRIAL SPACE FOR LEASE

2430 Lucknow Dr # 5,
Mississauga



COMMENTS

Excellent small industrial unit in the heart of Mississauga's established employment area. This unit features 18 ft clear height, providing excellent vertical storage capacity, along with one truck level shipping door and 53 ft trailer access, making it ideal for warehousing, distribution, or light manufacturing users. The space offers a practical layout suited for a variety of industrial uses, with convenient shipping capabilities and easy access for larger vehicles. Located with quick connectivity to major highways and surrounding amenities, this property ensures seamless logistics and accessibility for both employees and operations. An excellent opportunity for businesses seeking a well-located, high clear industrial unit in a strong market.

DETAILS

Total Size: 2589 Sq. Ft.
Office Area: 258 Sq. Ft.
Industrial Area: 2331 Sq. Ft.
Retail Area: 0 Sq. Ft.
Zoning: E2
List Rate: \$17.95 Sq Ft Net
TM: \$5.01
Clear Height: 18 0
Loading: 1 Truck Level Door
Sprinklers: Yes
Heat: Gas Forced Air Open
Available: 05/01/2026



Jason Gilbert
 Broker
 Cell: (416) 419-2115
 jasongilbert@induspacerealty.com

www.induspacerealty.com



John S. Gilbert
 Broker of Record/Owner
 Cell: (416) 828-5547
 jgilbert@induspacerealty.com

5800 Ambler Drive, Suite 210, Mississauga, Ontario L4W 4J4 | T:(905) 277 4747

