

## FOR LEASE Industrial/Flex Space

### Roberto Magno

Founder - Principal

617.823.5303

roberto@castlearchpa.com

### Sergio Magno

Managing Director

978.835.1915

sergio@castlearchpa.com

68 Leonard St, Suite 207  
Belmont, MA 02478  
castlearchpa.com

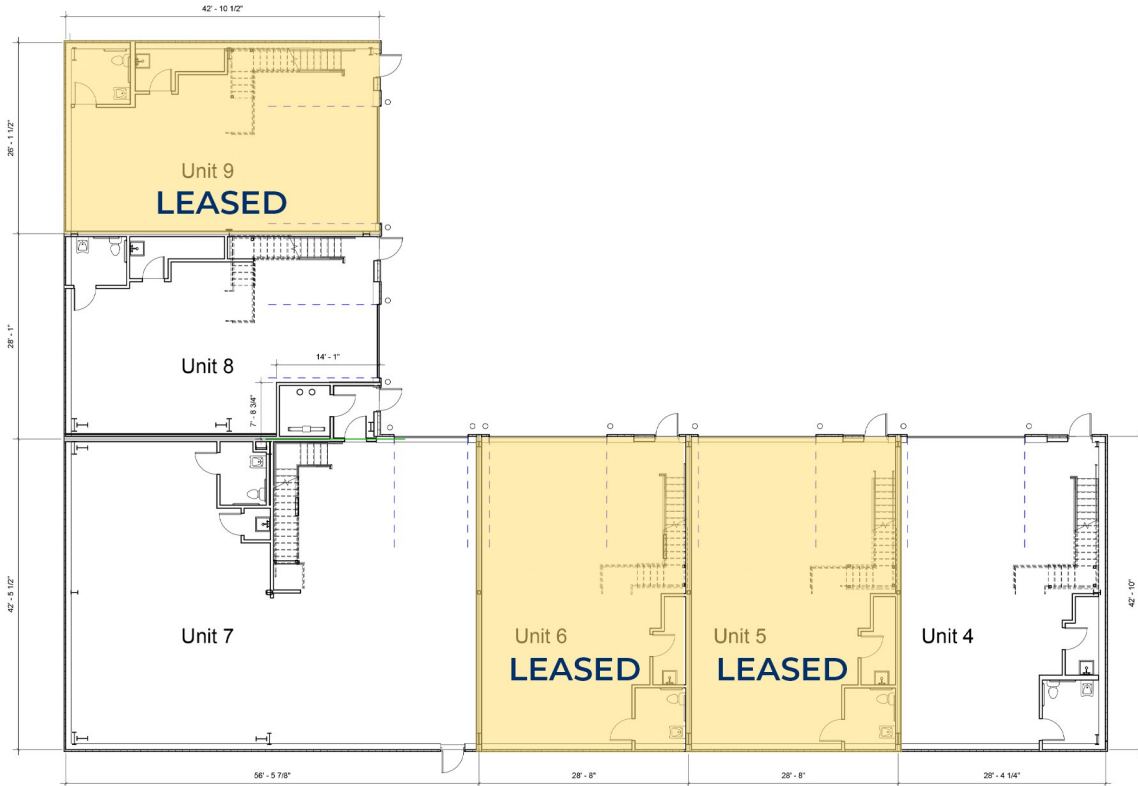
## 28-30 Riverdale Ave, Newton, MA

Five Available Flex/Industrial Bays

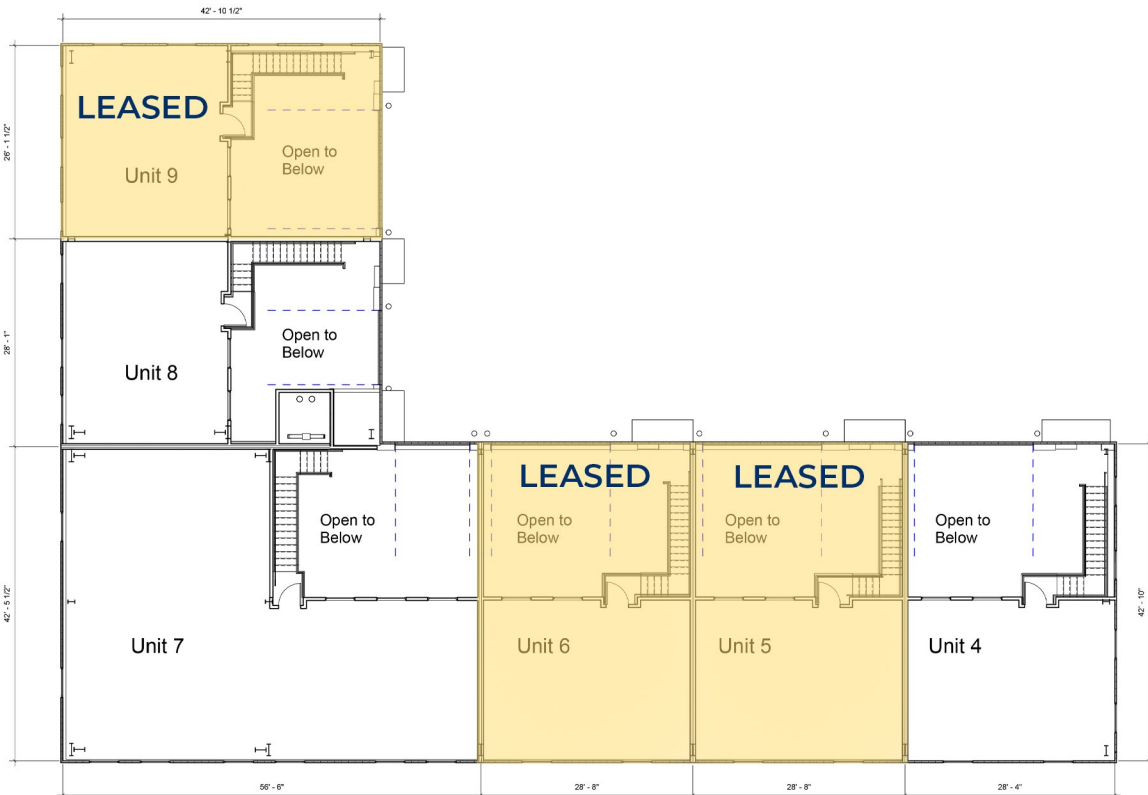
### Highlights:

- New Construction (2023)
- Asking \$28.00 per RSF NNN
- Available Spaces Ranging from 1,677 RSF - 4,157 RSF
- 14' Overhead Drive-in Doors
- Warehouse Clear Heights Ranging from 9'-24'
- Zone M(Manufacturing)
- Fully Sprinklered and HVAC Throughout
- Immediate Access to Mass Pike, Storrow Drive & Routes 16 & 20

## Warehouse



## Mezzanine Office





# Location/Amenities

- 3 Miles to Storow Dr
- 1 Mile to Mass Pike

