

13144

S. PULASKI ROAD

ALSIP, ILLINOIS

For Lease
78,661 SF



// BUILDING SPECS



370,705 SF BUILDING



8 EXTERIOR DOCKS



WET SPRINKLER SYSTEM



78,661 SF AVAILABLE



600 AMPS @ 480 VOLTS OF POWER



14.5 ACRE SITE SIZE



3,873 SF OFFICE AREA



92 CAR PARKING



BUILT IN 1985



24' CLEAR HEIGHT



15 TRAILER PARKING



50' X 39' COLUMN SPACING



// GALLERY



WAREHOUSE

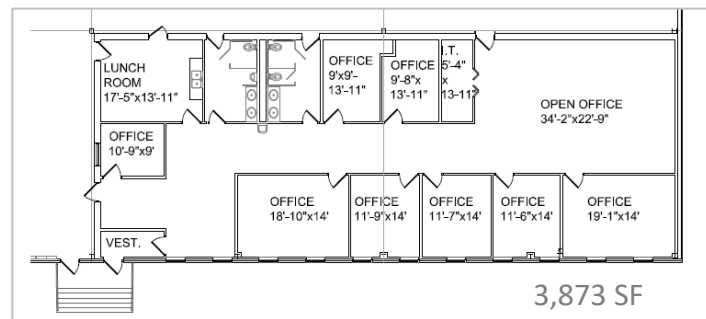
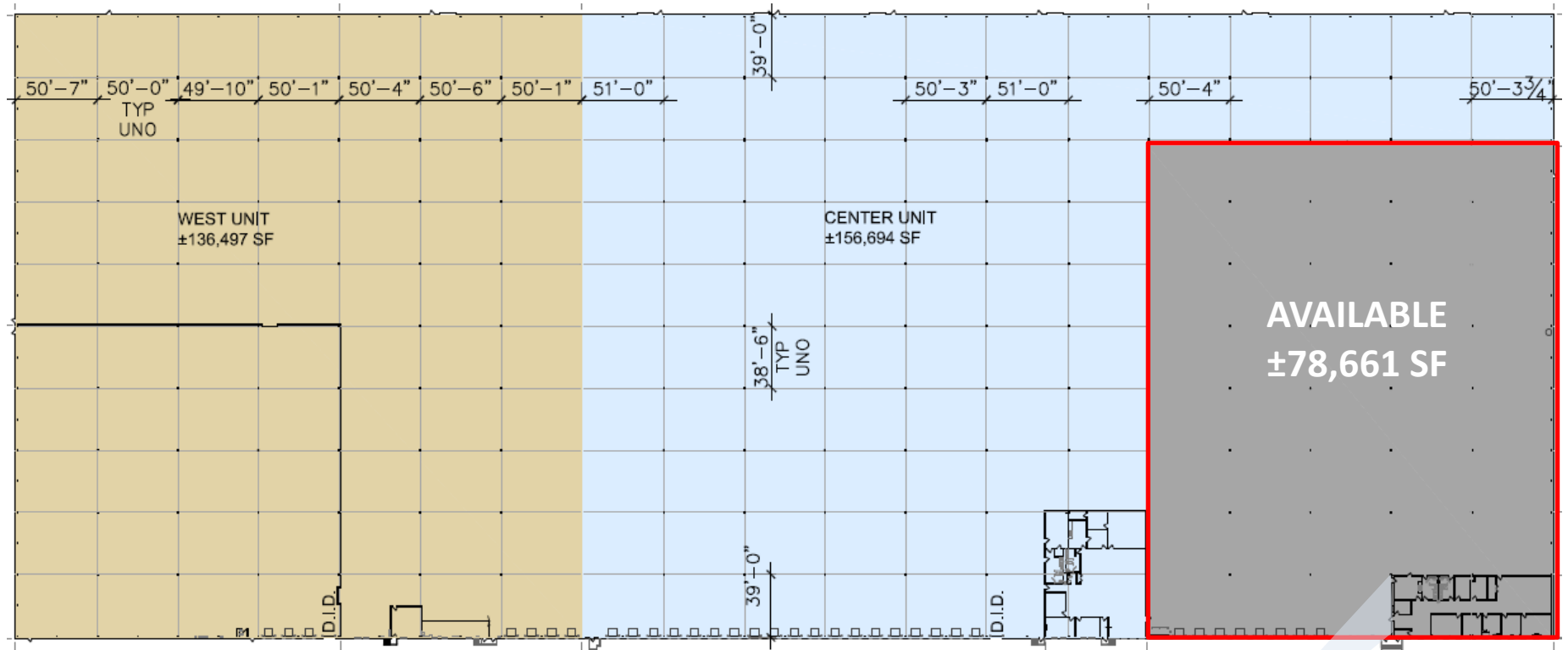


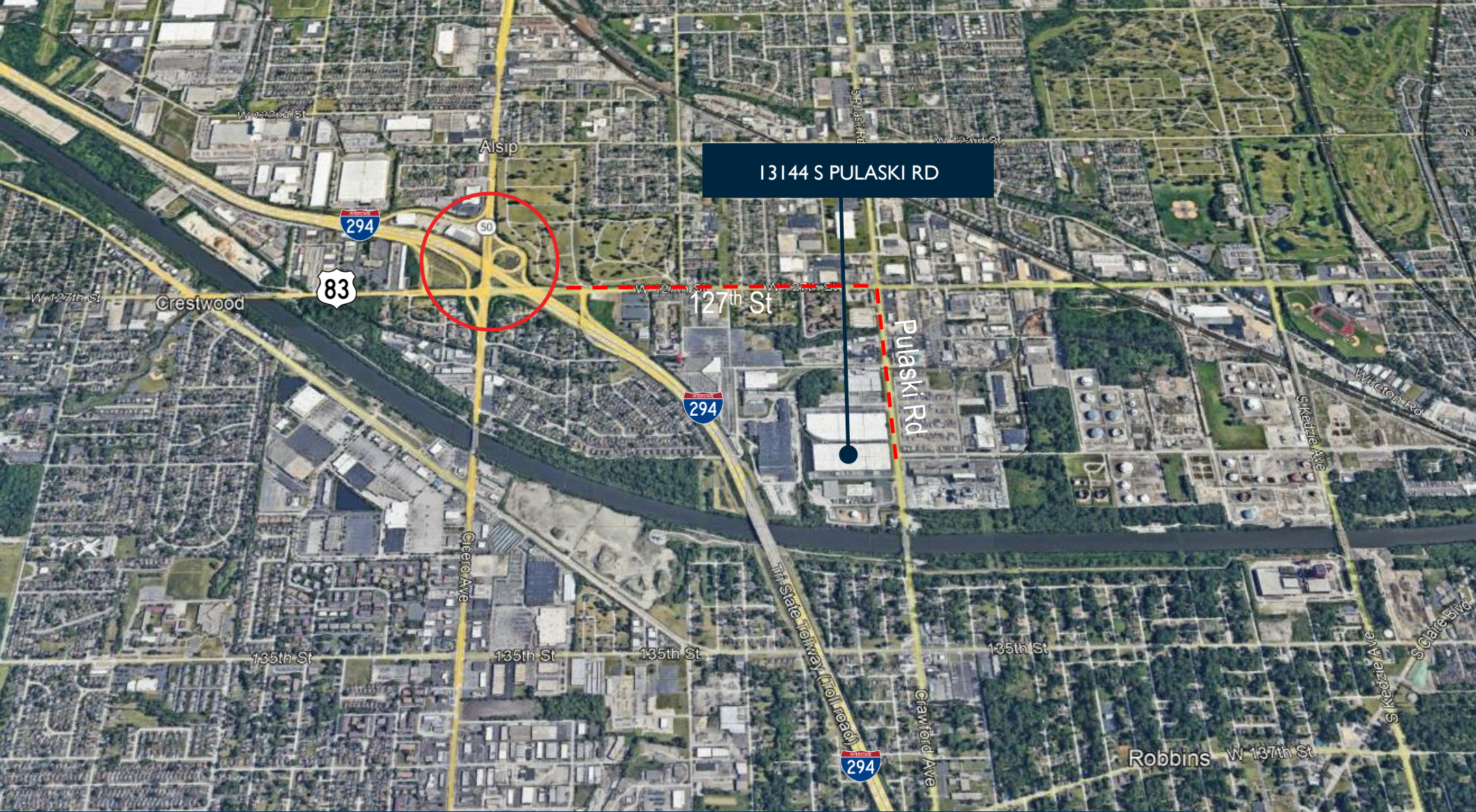
OFFICE & DOCK AREAS



// FLOOR PLAN

370,705 SF BUILDING





13144 S PULASKI RD

CONTACT

Jeff Matella
Director
+1 847 720 1349
Jeff.Matella@cushwake.com

Michael Labek
Senior Associate
+1 312 470 2309
Michael.Labek@cushwake.com

Matthew Saddler
Director
+1 312 470 3834
Matt.Saddler@cushwake.com

Elizabeth Schoenheider
Associate
+1 847 720 1328
Elizabeth.Schoenheider@cushwake.com

