



FOR LEASE – EXECUTIVE SUITES

2001 Timber Creek Road
Flower Mound, TX



LOCATION:

Off Morriss Road, north of FM-1171, near Timber Creek Elementary. Walkability to the Riverwalk at Central Park development.

SIZE:

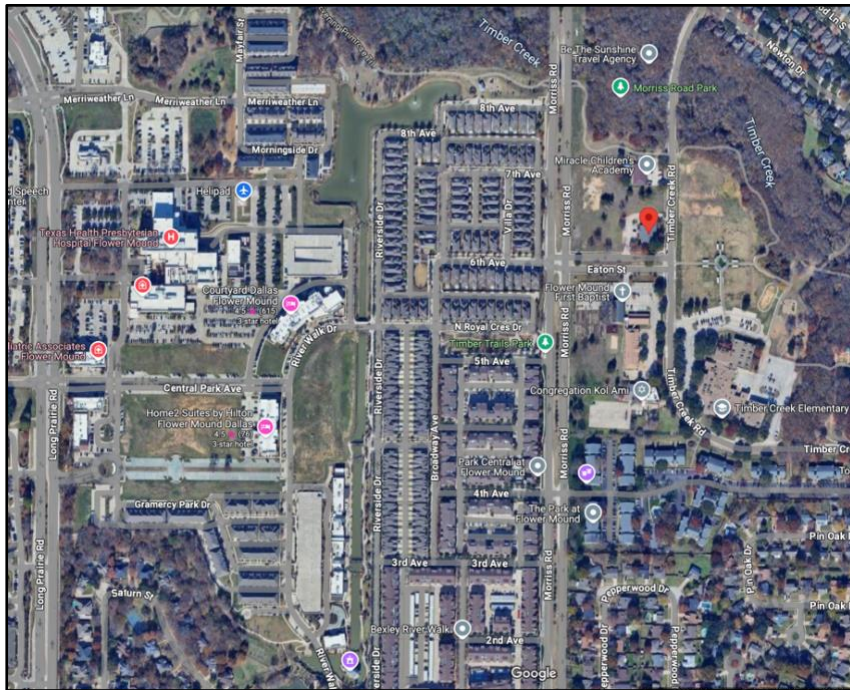
- Executive Suites

LEASE RATES:

- See Broker for Availability and Pricing

HIGHLIGHTS:

- Beautiful building with individual, private executive suite offices
- Common areas include
 - breakroom
 - conference room
 - coffee bar
 - restrooms
- Common Wi-fi included



FOR INFORMATION:

Phyllis Garcia: Phyllis@BridgeRealtyTexas.com

Diana Pergande: Diana@BridgeRealtyTexas.com

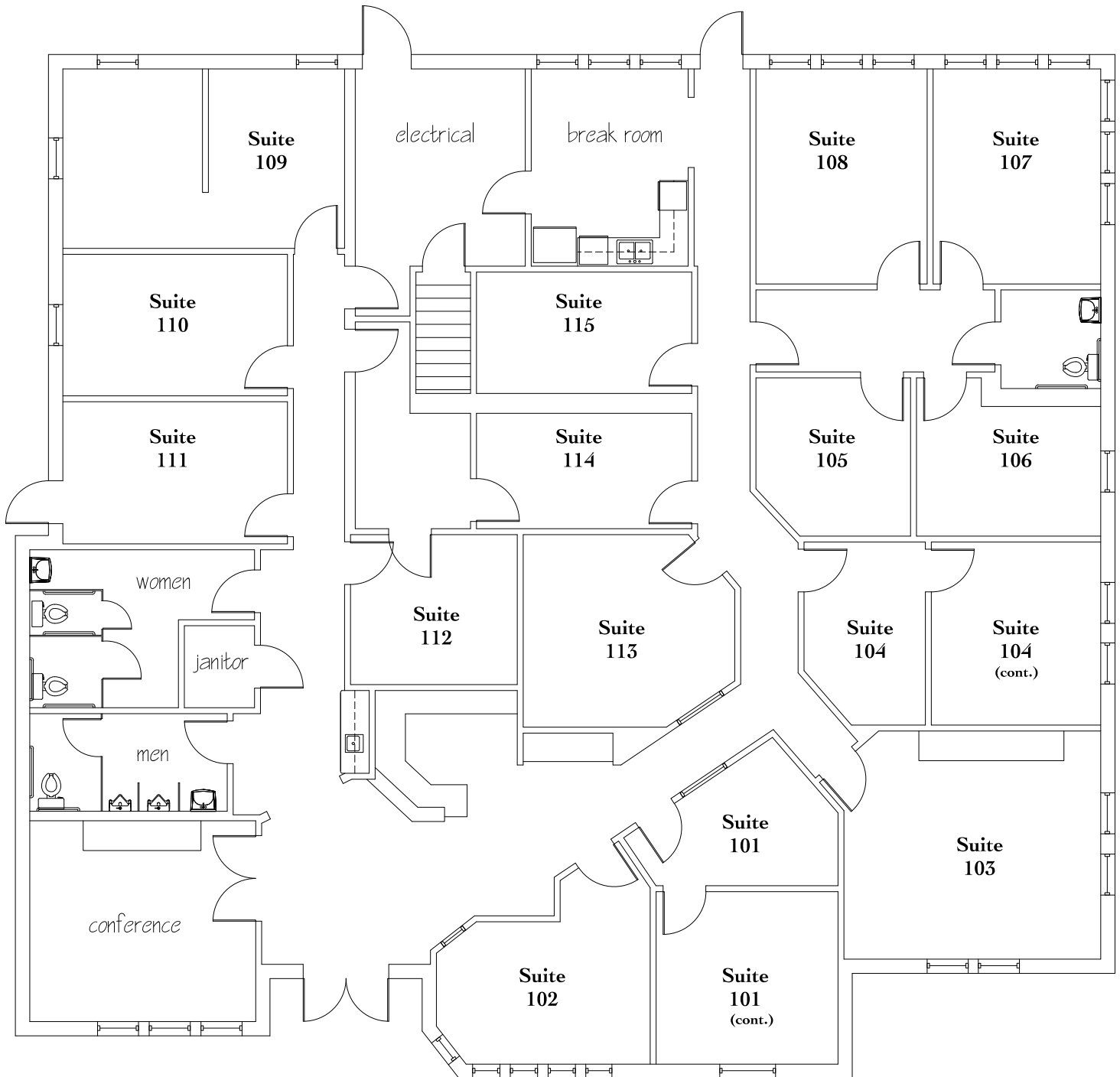
www.BridgeRealtyTexas.com | 972.899.1851

400 Parker Square, Suite 270H | Flower Mound, TX 75028

This information is believed to be accurate, but no representation or warranty, express or implied, as to its accuracy or completeness is made by any party. The presentation of this property is submitted subject to errors, omissions, change of price or prior sale or lease, or withdrawal without notice.

FLOOR PLAN

2001 Timber Creek Road
Flower Mound, TX



PHOTOS

2001 Timber Creek Road
Flower Mound, TX

