

MKT CTR

555 + 575 MKT ST

SAN FRANCISCO



THE ADDRESS THAT
BREAKS EXPECTATIONS



REDEFINING WORKPLACE CULTURE

Market Center is breaking the mold of what an office building is. Built around a “come as you are” culture, this is where San Franciscans *want* to show up.

We’re reimagining what matters most - creating spaces where real connections happen, where play sparks ideas, and your workday is *actually* energizing.

At the heart of it all, The Breakroom. A dynamic gathering place where work and play high-five each other.

The Breakroom: San Francisco’s first activity center Delivering Fall 2026.

Occupancy Ready Suites: Fully furnished Spec Suites with AV equipment.

TWO TOWERS

ONE BREAKOUT
EXPERIENCE



CONNECTED BY COURTYARD
AND SHARED BRKRM

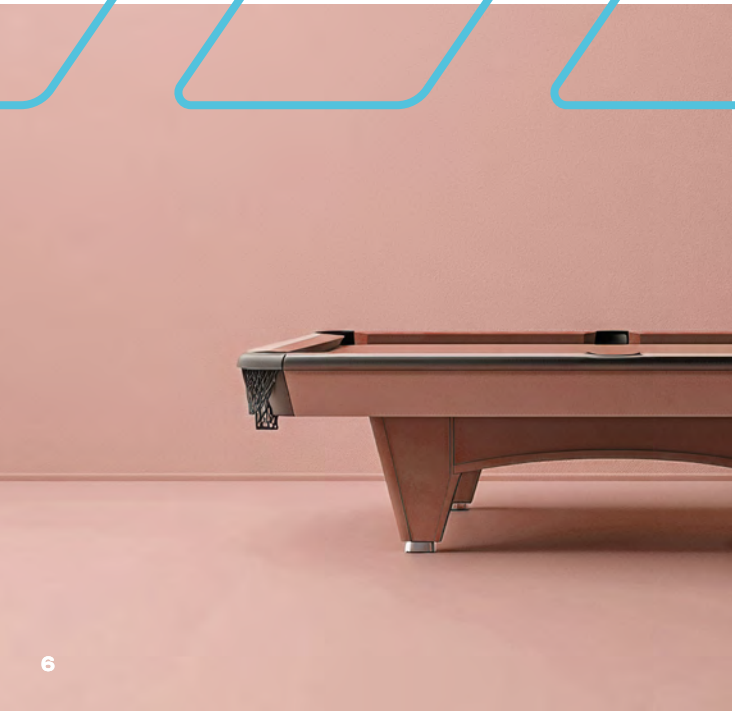




BRKRM

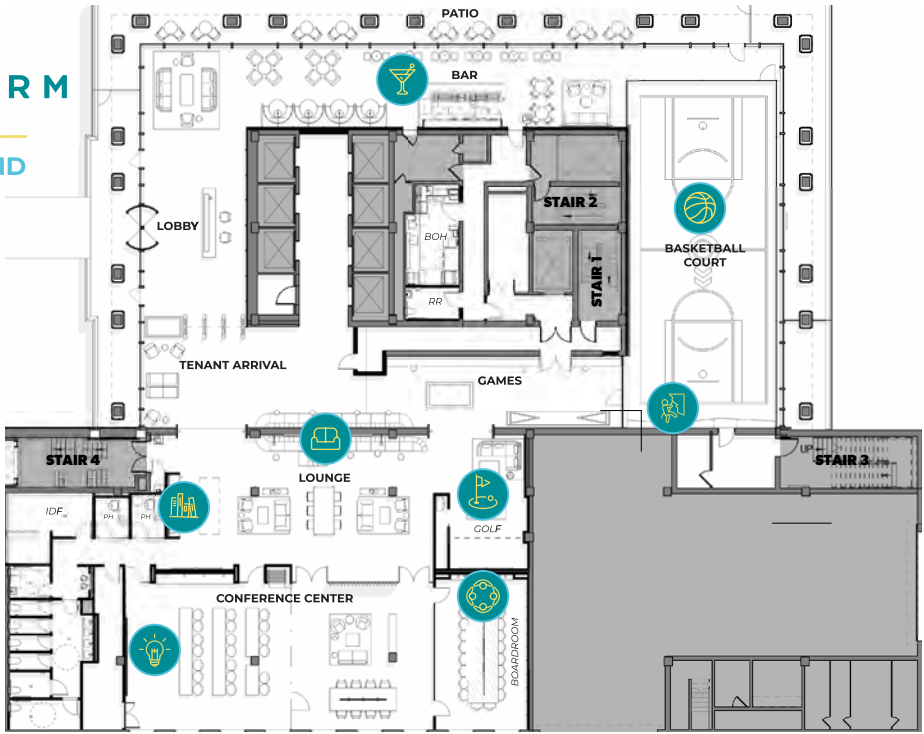


FROM MARTINIS TO
JUMP SHOTS, WORK
IS A *FUN & ENERGIZING*
EXPERIENCE...



BRKRM

GROUND
FLOOR



- Bar and Restaurant
- Board-room
- Tenant Lounge
- Library
- Basketball Court
- Golf Simulator
- Training Room
- Rockwall

BRKRM

SECOND
FLOOR



- Recovery Area
- Showers/ Lockers
- Pickleball Courts
- Fitness Center
- Yoga Studio



REPRESENTATIVE IMAGE ONLY



REPRESENTATIVE IMAGE ONLY

AVAILABILITY

CLICK SUITE # TO VIEW FLOOR PLAN

PARTIAL FLOOR AVAILABILITIES



555 MKT CTR

FUTURE GROUND FLOOR
ACTIVITY CENTER, *BRKRM*



575 MKT CTR

TEST FIT FLOOR PLAN



575 MKT CTR
40TH FLOOR SPEC SUITE

AVAILABILITY

CLICK SUITE # TO VIEW FLOOR PLAN

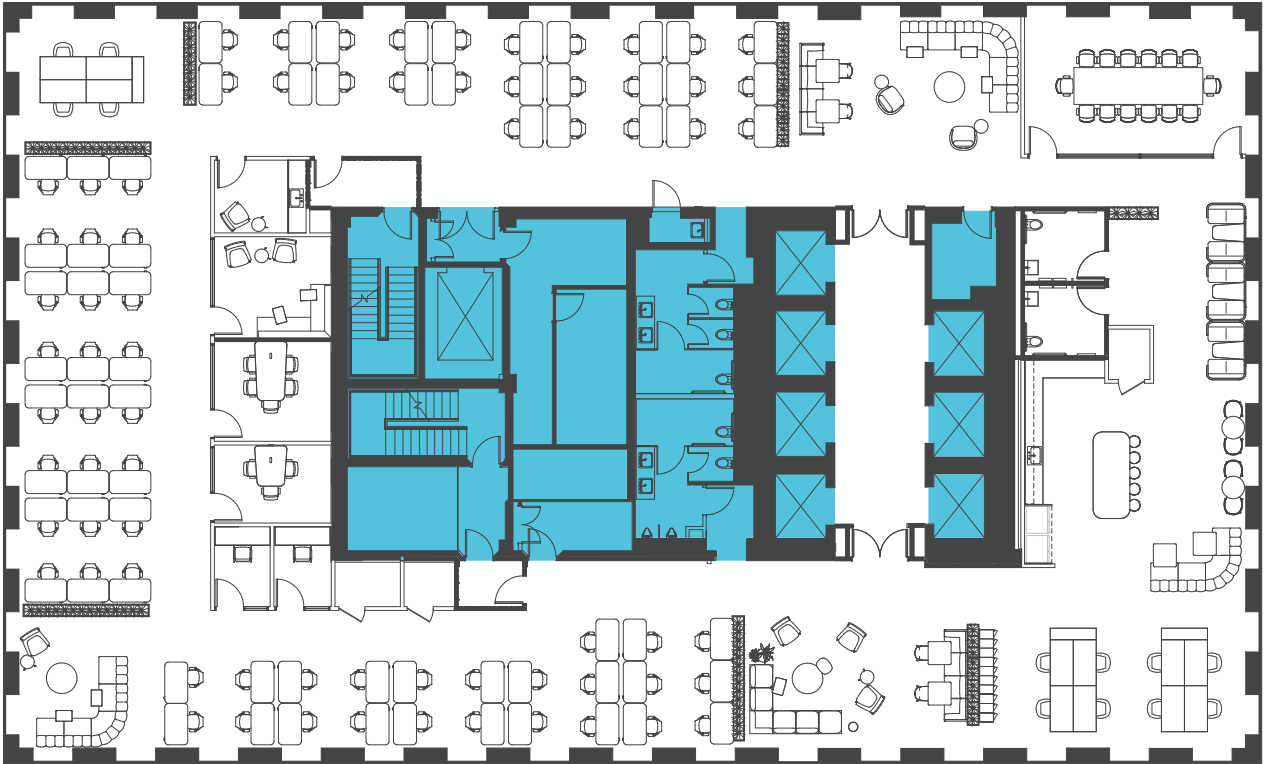
FULL FLOOR AVAILABILITIES

555 MKT CTR

575 MKT CTR

FUTURE GROUND FLOOR
ACTIVITY CENTER, *BRKRM*

TEST FIT FLOOR PLAN



555 MKT CTR
20TH FLOOR SPEC SUITE

AVAILABILITY

BIG BLOCK OPPORTUNITY
UP TO 161,000 RSF

555 MKT CTR

FLOORS 8-21
161,000 RSF

FUTURE GROUND FLOOR
ACTIVITY CENTER, *BRKRM*

575 MKT CTR

TEST FIT FLOOR PLAN



575 MKT CTR
3800 SPEC SUITE

CONNECTED

IN ALL THE RIGHT WAYS



Bus, train or pedal your way to anywhere in the Bay!



MKT CTR

555 + 575 MKT ST

SAN FRANCISCO



CONTACT US:

CHARLIE HANAFIN

Senior Vice President

415.395.4951

charlie.hanafin@jll.com

CA Lic. #01856260

JAK CHURTON

Managing Director

415.395.7292

jak.churton@jll.com

CA Lic. #01277724

LEXI CASTELLINO

Associate

650.400.8344

lexi.castellino@jll.com

CA Lic. #02221002

CHRISTOPHER T. ROEDER

Vice Chairman

415.395.4971

chris.roeder@jll.com

CA Lic. #01190523

Although information has been obtained from sources deemed reliable, neither Owner nor JLL makes any guarantees, warranties or representations, express or implied, as to the completeness or accuracy as to the information contained herein. Any projections, opinions, assumptions or estimates used are for example only. There may be differences between projected and actual results, and those differences may be material. The Property may be withdrawn without notice. Neither Owner nor JLL accepts any liability for any loss or damage suffered by any party resulting from reliance on this information. If the recipient of this information has signed a confidentiality agreement regarding this matter, this information is subject to the terms of that agreement. ©2026 Jones Lang LaSalle IP, Inc. All rights reserved.

DRA
ADVISORS

flynn
properties

JLL