

18931 S. LAUREL PARK ROAD, RANCHO DOMINGUEZ, CA



FOR LEASE

SOUTH BAY INDUSTRIAL OUTDOOR STORAGE (±1.96 AC)
CONTAINER STACKING ALLOWED

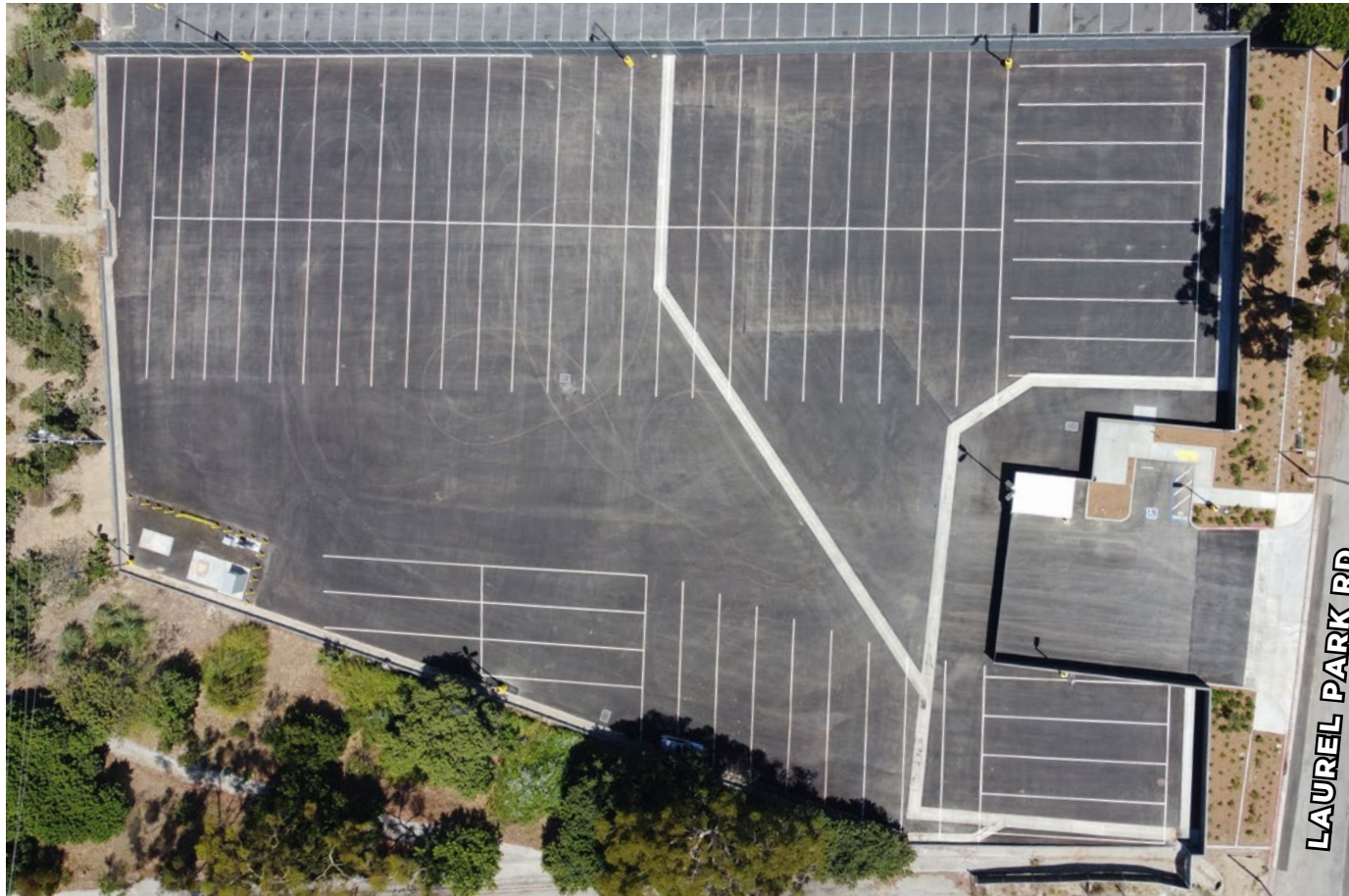


NORTH PALISADE
PARTNERS



**CUSHMAN &
WAKEFIELD**

SITE PLAN



PROPERTY HIGHLIGHTS



Close proximity to
405, 710 & 91
Freeways



105+ Trailer
Parking Spaces



Container Stacking Allowed
2 High with 10' Setback
*Limitations Apply



Fenced and
Secured



Ready for
Occupancy

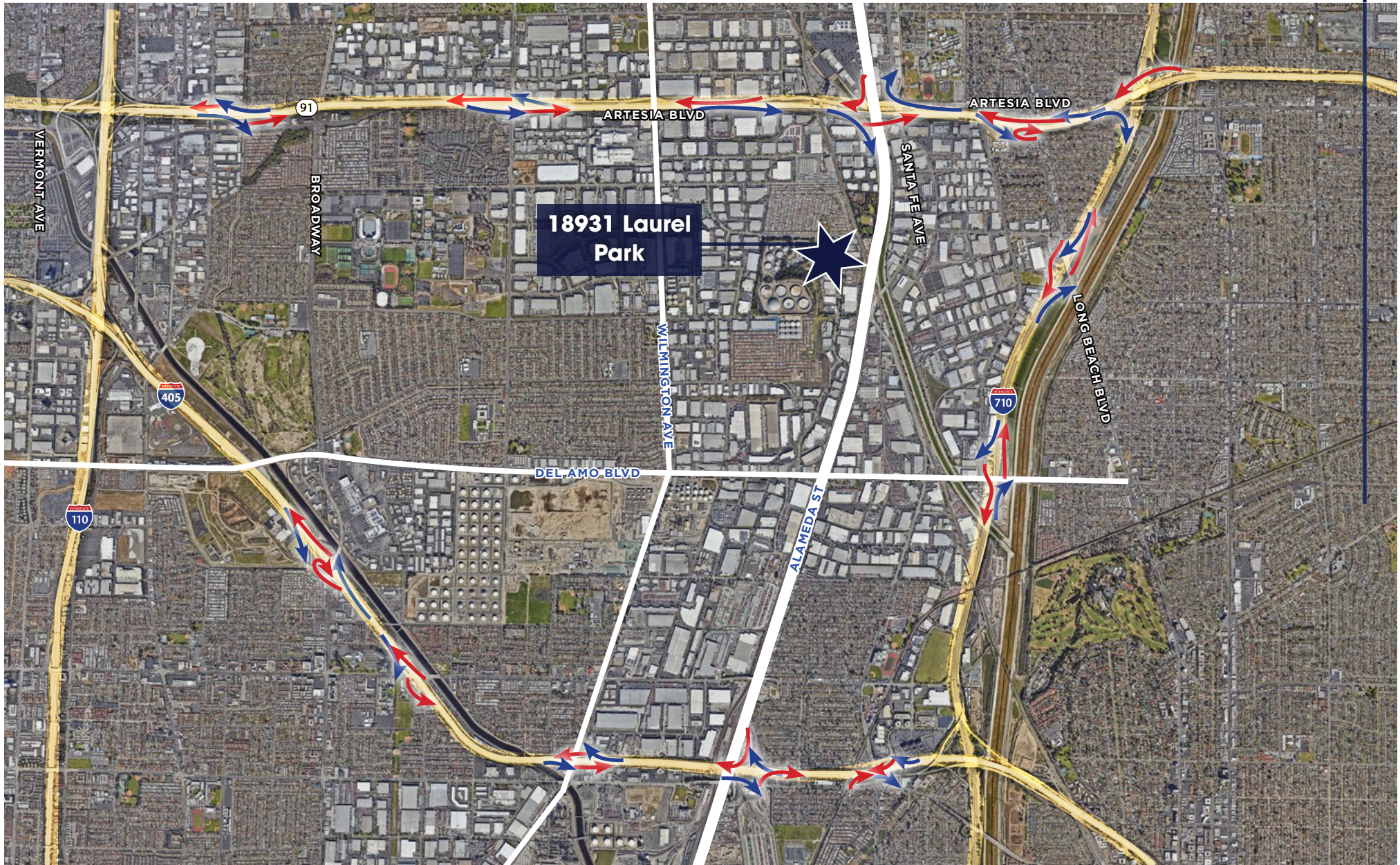


Existing Service of
400 Amps 277/480 V
Expandable to 4000 Amps

LOCAL MAP

— OFF RAMP

— ON RAMP



REGIONAL MAP





Port of
Long Beach

Port of
Los Angeles

ALAMEDA CORRIDOR

LAUREL PARK ROAD

CONTACTS

STEVE BOHANNON

Executive Director

Lic: 01086195

(310) 525-1910

steve.bohannon@cushwake.com

BRANDON GILL

Executive Director

Lic: 01262330

(213) 629-6528

brandon.gill@cushwake.com

BRANDON BURNS

Executive Director

Lic: 01194796

(213) 629-6541

brandon.burns@cushwake.com

JAE YOO

Executive Director

Lic: 01503567

(213) 629-6551

jae.yoo@cushwake.com

