




Rare Full Floor Sublease at **PLATFORM**

8840 Washington
Boulevard, Culver City

9,947 RSF

 **JLL** SEE A BRIGHTER WAY

8840 Washington Boulevard / Culver City



Size

9,947 rsf



Term

Through 7/31/27



Rate

Negotiable



Parking

Valet Parking at 3/1000



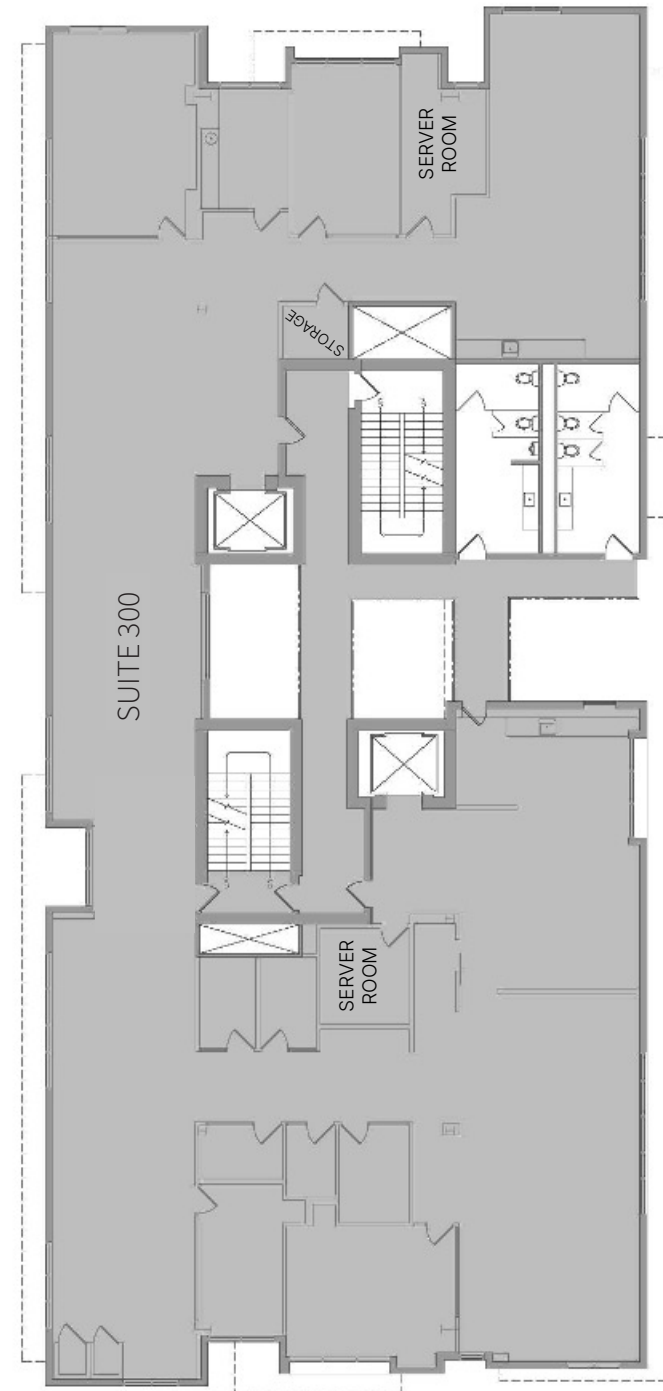
Availability

August 2025



Details

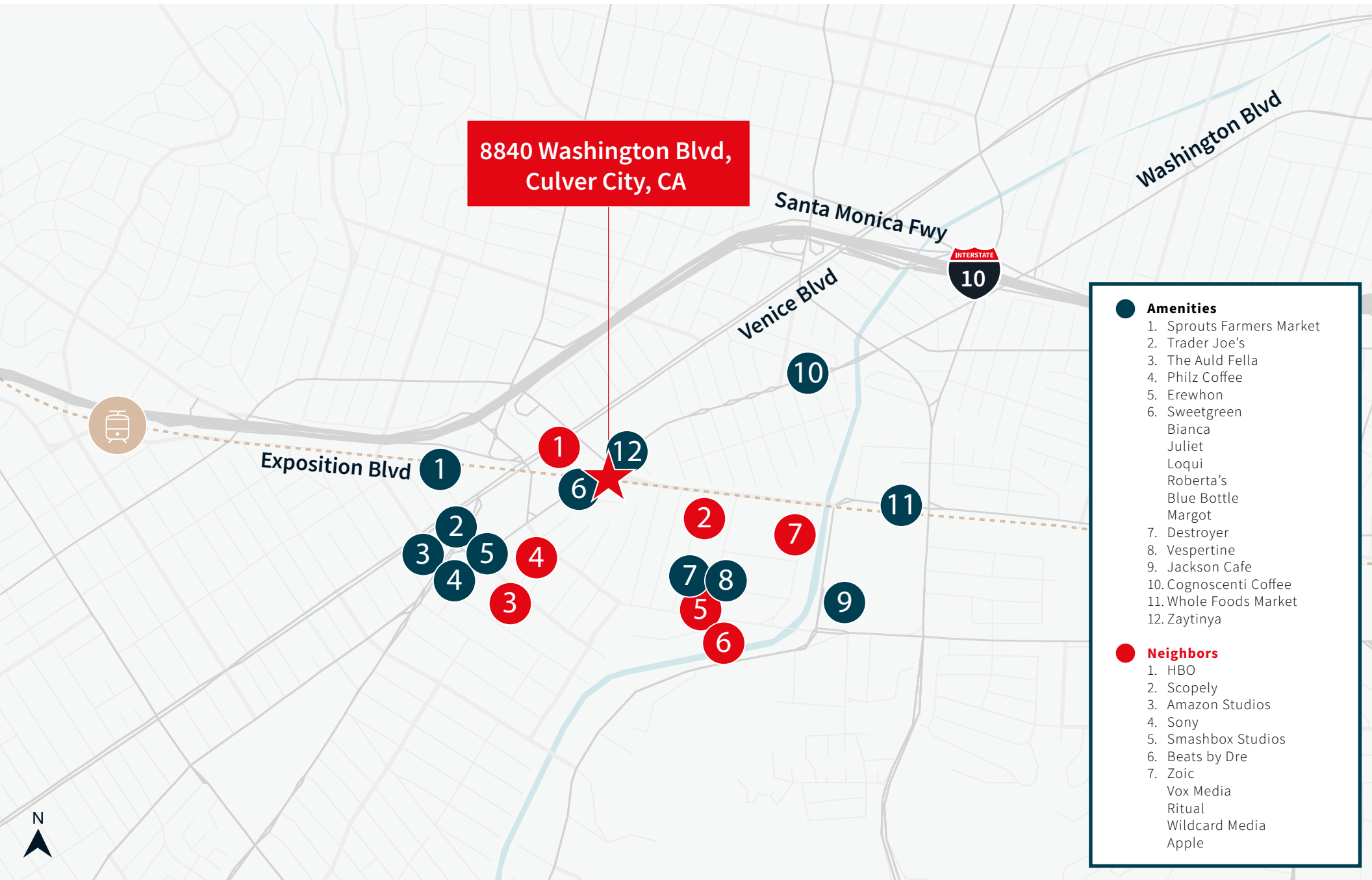
- Full Floor
- Plug & Play, most FF&E included
- Two kitchens
- 10 conference rooms / private offices
- Capacity for 60 + desks
- Fully wired with extensive AV infrastructure
- Located at PLATFORM, with world class restaurants and retailers on-premise
- Ample on-site valet parking
- Across the street from the Shay Hotel and Metro stop
- Less than a 10 minute walk to Downtown Culver City





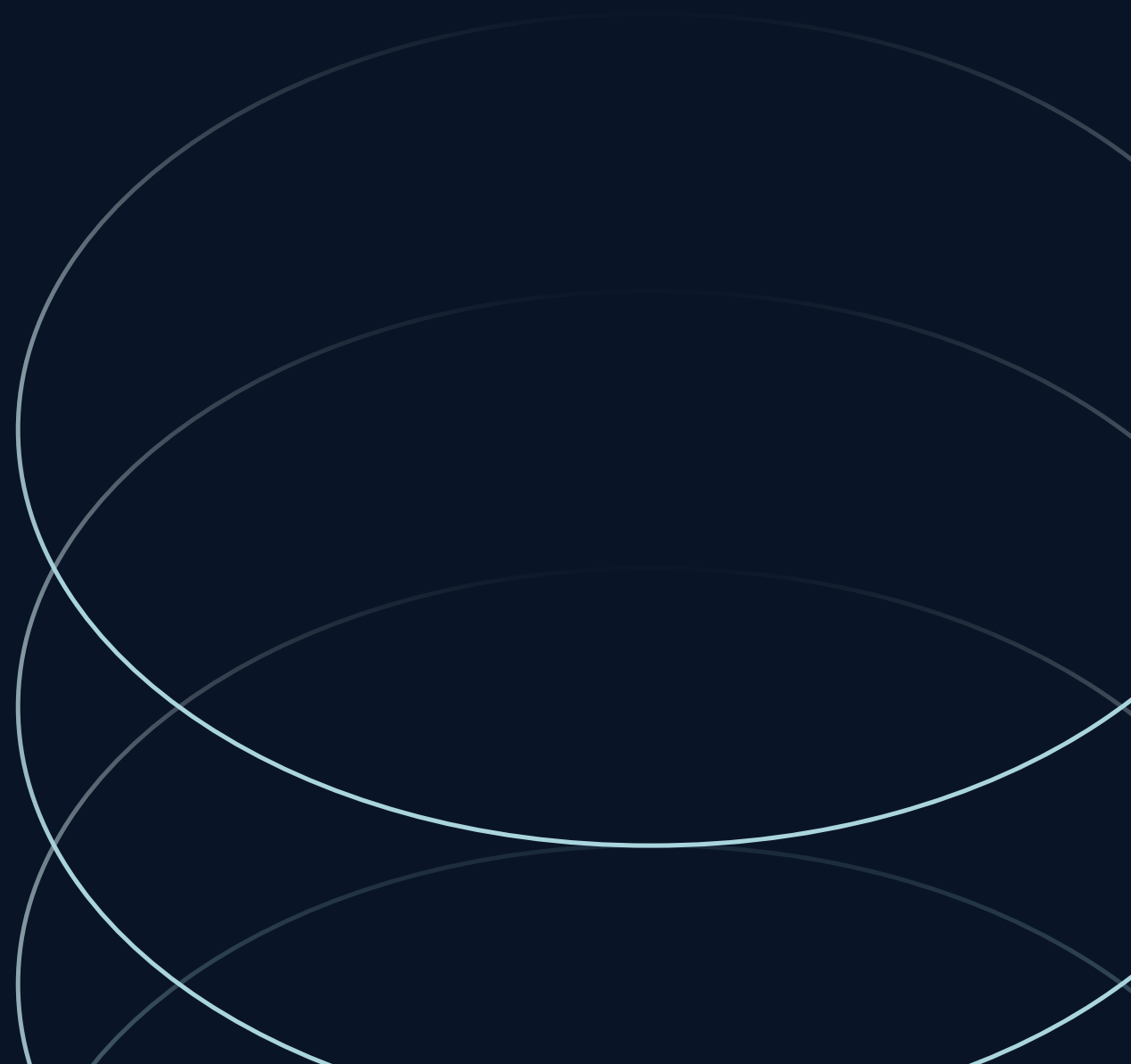


Location



- Amenities**
1. Sprouts Farmers Market
 2. Trader Joe's
 3. The Auld Fella
 4. Philz Coffee
 5. Erewhon
 6. Sweetgreen
 - Bianca
 - Juliet
 - Loqui
 - Roberta's
 - Blue Bottle
 - Margot
 7. Destroyer
 8. Vespertine
 9. Jackson Cafe
 10. Cognoscenti Coffee
 11. Whole Foods Market
 12. Zaytinya

- Neighbors**
1. HBO
 2. Scopely
 3. Amazon Studios
 4. Sony
 5. Smashbox Studios
 6. Beats by Dre
 7. Zoic
 - Vox Media
 - Ritual
 - Wildcard Media
 - Apple

**Mac Burridge**

Lic. 01968091

mac.burridge@jll.com

630-415-6554

Josh Rand

Lic. 01857606

josh.rand@jll.com

310-943-5153