

20855 TELEGRAPH ROAD
SOUTHFIELD, MICHIGAN

INDUSTRIAL FOR SALE OR LEASE
18,890 Square Feet Available



**SIGNATURE
ASSOCIATES**
KNOW SIGNATURE | KNOW RESULTS

GREAT MAIN ROAD EXPOSURE



PROPERTY FEATURES

- 18,890 square feet available
- 2,700 square feet office
- 12'5" clear height
- (2) grade level doors
- Located on 2.06 acres
- Heavy power
- 51 parking spaces
- Fenced and secure outside storage
- Lease Rate: \$6.95/sq. ft. NNN
- Sale Price: \$1,794,550 (\$95.00/sq. ft.)



For more information, please contact:

STEVE GORDON
(248) 948 0101
sgordon@signatureassociates.com

JASON STOUGH
(248) 948 4180
jstough@signatureassociates.com

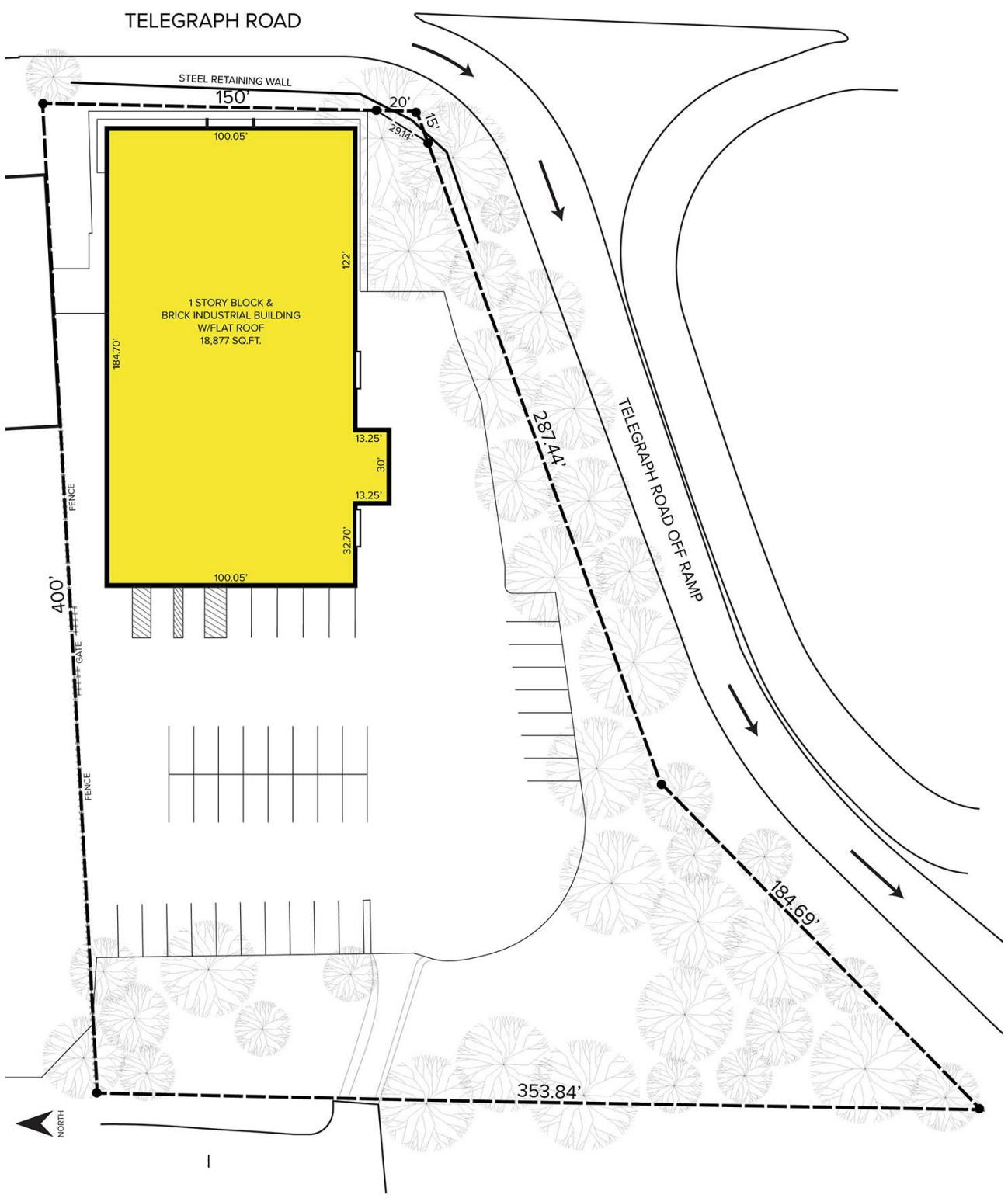
SIGNATURE ASSOCIATES
One Towne Square, Suite 1200
Southfield, MI 48076
www.signatureassociates.com

20855 Telegraph Road – Southfield, Michigan

Industrial For Sale or Lease

18,890
Square Feet
AVAILABLE

Site Plan



For more information, please contact:

STEVE GORDON
(248) 948 0101
sgordon@signatureassociates.com

JASON STOUGH
(248) 948 4180
jstough@signatureassociates.com

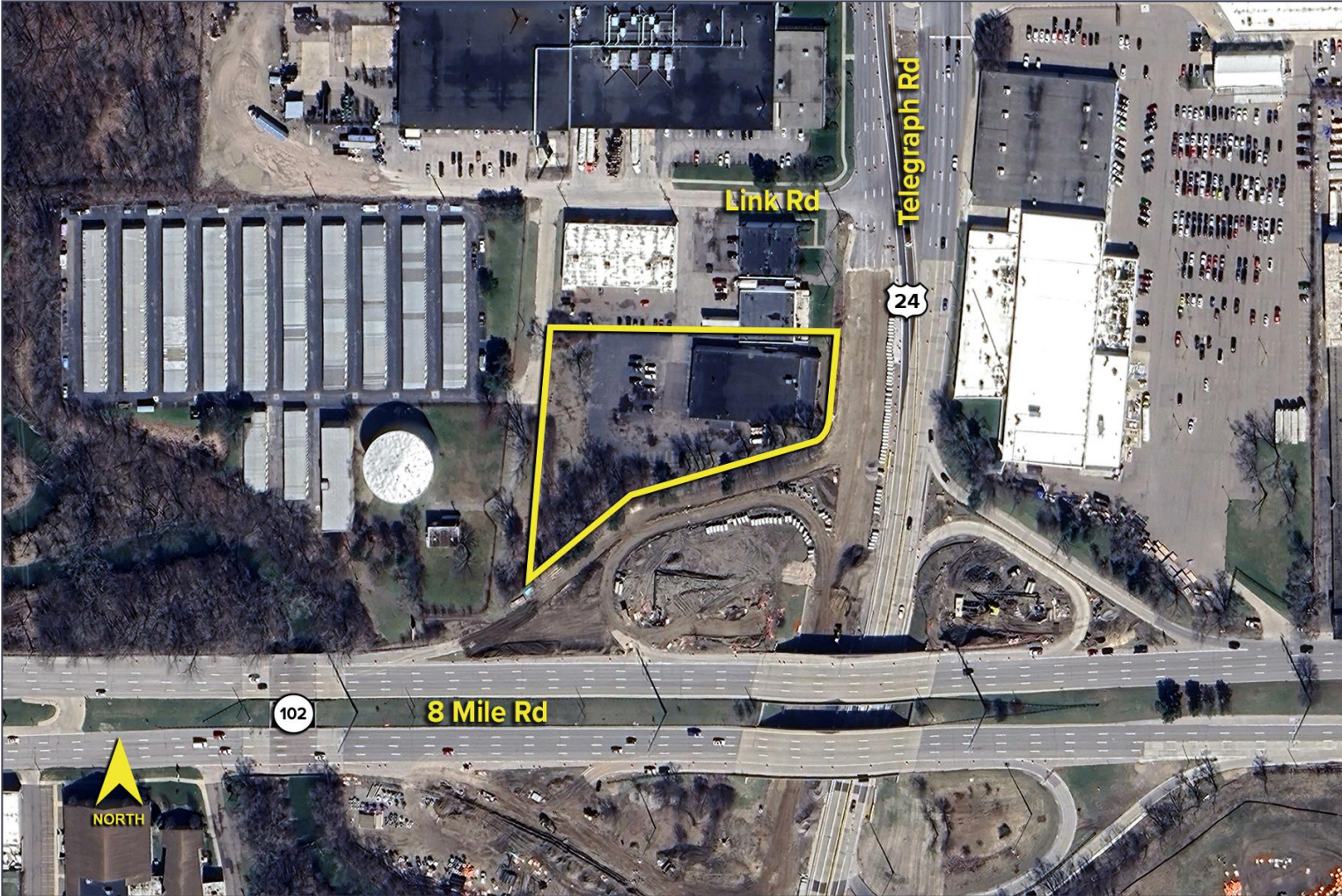
SIGNATURE ASSOCIATES
One Towne Square, Suite 1200
Southfield, MI 48076
www.signatureassociates.com

20855 Telegraph Road – Southfield, Michigan

Industrial For Sale or Lease

18,890
Square Feet
AVAILABLE

Aerial



For more information, please contact:

STEVE GORDON
(248) 948 0101
sgordon@signatureassociates.com

JASON STOUGH
(248) 948 4180
jstough@signatureassociates.com

SIGNATURE ASSOCIATES
One Towne Square, Suite 1200
Southfield, MI 48076
www.signatureassociates.com

Information is subject to verification and no liability for errors or omissions is assumed. Price is subject to change and listing withdrawal.