



  
**Lang Tree**  
*Lake Norman*

| NOW LEASING OFFICE SPACE |

Mooresville, NC

# BUILDING H1-5



105 Landings Drive | Mooresville, NC

## PROPERTY FACTS

- Waterfront mixed use development with regional draw
- Excellent access and visibility
- Located directly at new I-77 exit 31
- 90,000 vehicles per day on I-77
- Adjacent to multiple shopping and dining options
- Ample parking

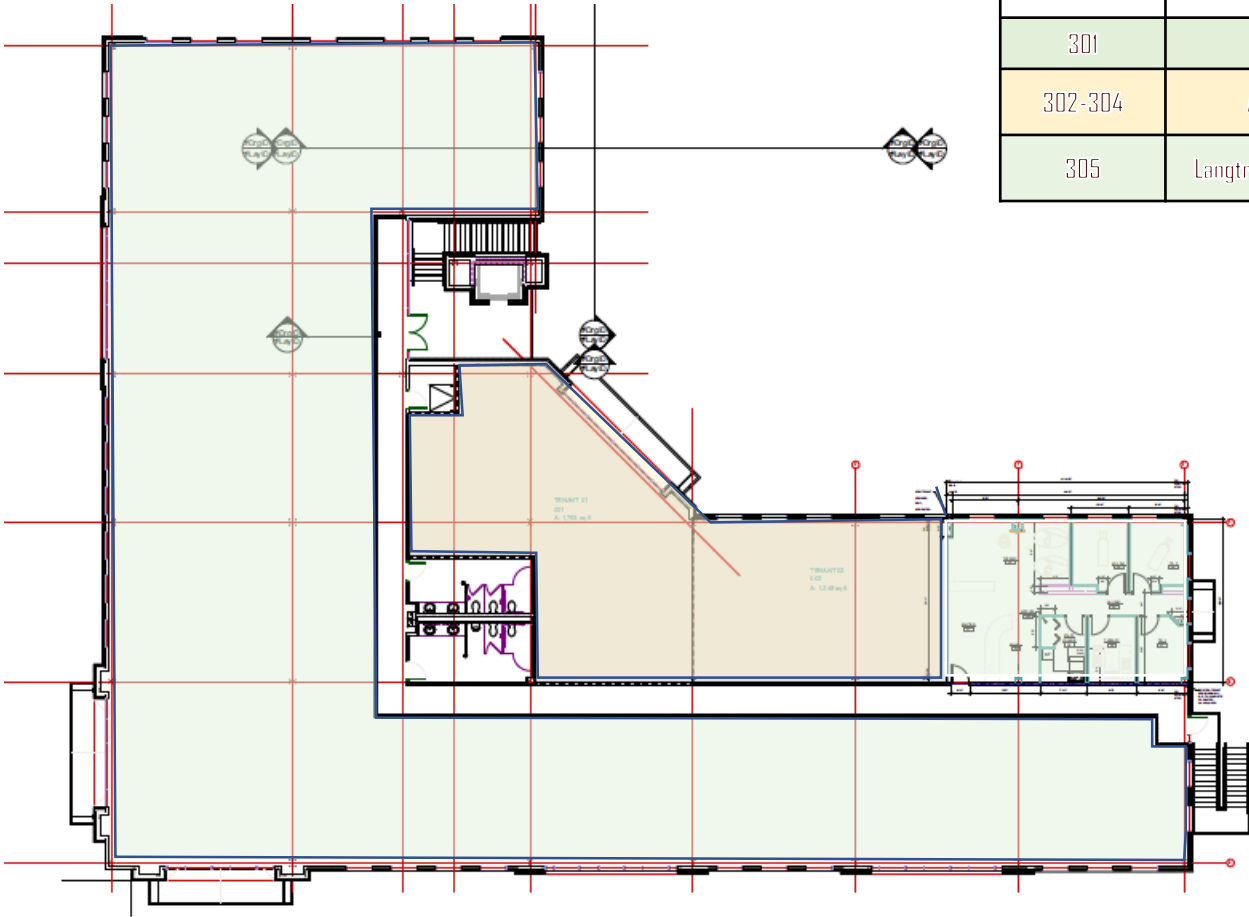


## BUILDING FACTS

- 2 stories of office above retail
- Adjacent deck for parking
- Stairs and elevator available to access top floor
- Excellent signage opportunities with frontage on Langtree Rd.
- Significant TIA for credit tenants



# BUILDING H FLOORPLAN



SUITE	BUILDING H1-5	SQ
301	REGUS	12,645 SF
302-304	AVAILABLE	3,625 SF
305	Langtree Chiropractic	1,200 SF



**Contact:**  
 Brian Long  
 Vice President of Sales & Leasing  
 704.997.2631  
 blong@rlwest.com