



# Church Space For Lease

1711 N AVON ST, BURBANK, CA 91505



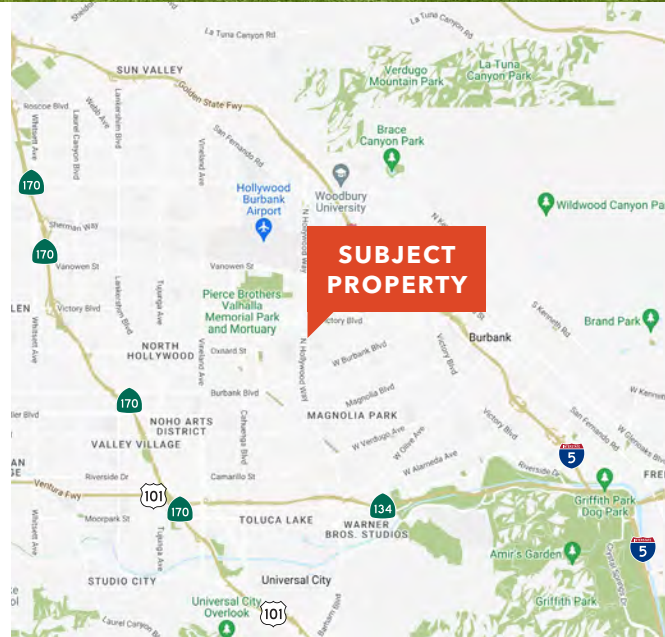
## Property Highlights

Shared use church space for lease in Burbank. Space includes sanctuary, fellowship hall, kitchen, classrooms, office, and on-site parking lot. Available Sunday's and most weeknights. See next page for details and contact agent for more information. Please do not disturb the church.

**RILEY ROHDE**  
858.369.3041  
[riley.rohde@kidder.com](mailto:riley.rohde@kidder.com)  
LIC N° 02207141

**ROBERT FLETCHER**  
858.369.3034  
[robert.fletcher@kidder.com](mailto:robert.fletcher@kidder.com)  
LIC N° 01706060

**ERIC KNOWLES**  
858.369.3017  
[eric.knowles@kidder.com](mailto:eric.knowles@kidder.com)  
LIC N° 00944210



This information supplied herein is from sources we deem reliable. It is provided without any representation, warranty, or guarantee, expressed or implied as to its accuracy. Prospective Buyer or Tenant should conduct an independent investigation and verification of all matters deemed to be material, including, but not limited to, statements of income and expenses. Consult your attorney, accountant, or other professional advisor.

**Kidder Mathews**

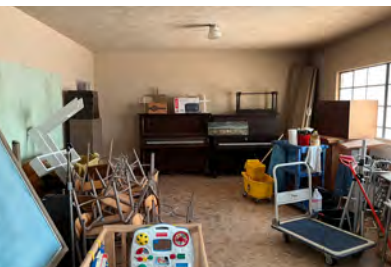
**FOR LEASE**

# Church Space

1711 N AVON ST, BURBANK, CA 91505

## LEASE DETAILS

Space Available (±8,000 SF)	Main Sanctuary seats ±300, 4 classrooms, large fellowship hall, kitchen, office space. Storage space available.
Days / Hours Available	Sundays: 12:30pm to 9:00pm in Main Sanctuary  Weeknights: 6:00pm to 9:30pm (various rooms available)
Term	Month-to-month up to 1-year initial term
Parking	On-site parking available
Janitorial	Tenant responsible for cleaning after each use
Non-profit	Tenant must be non-profit entity
Utilities	Tenant to pay its share of utilities
Tours	Contact agent for touring instructions
Lease Rate	\$3,000 - \$6,000 (rate is dependent upon days, hours, amount of space used and total occupancy)



**RILEY ROHDE**  
858.369.3041  
[riley.rohde@kidder.com](mailto:riley.rohde@kidder.com)  
LIC N° 02207141

**ROBERT FLETCHER**  
858.369.3034  
[robert.fletcher@kidder.com](mailto:robert.fletcher@kidder.com)  
LIC N° 01706060

**ERIC KNOWLES**  
858.369.3017  
[eric.knowles@kidder.com](mailto:eric.knowles@kidder.com)  
LIC N° 00944210

**KIDDER.COM**

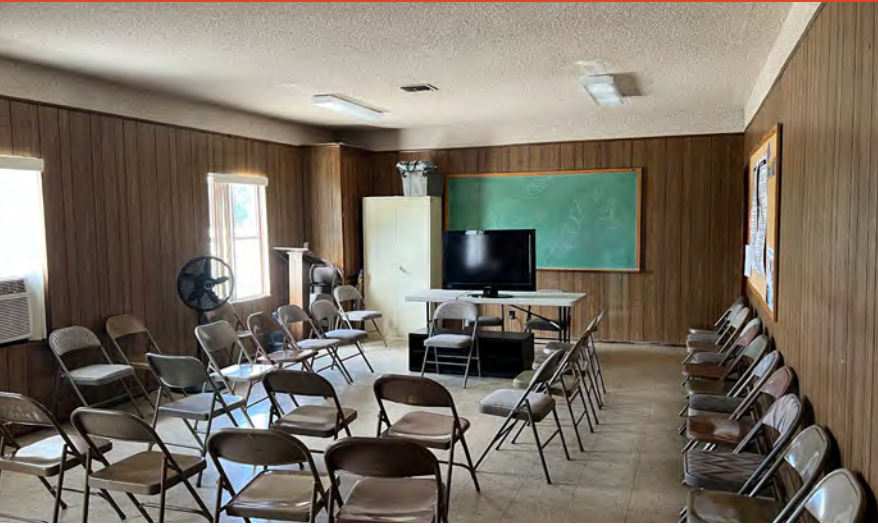
This information supplied herein is from sources we deem reliable. It is provided without any representation, warranty, or guarantee, expressed or implied as to its accuracy. Prospective Buyer or Tenant should conduct an independent investigation and verification of all matters deemed to be material, including, but not limited to, statements of income and expenses. Consult your attorney, accountant, or other professional advisor.

**km Kidder Mathews**

FOR LEASE

# Church Space

1711 N AVON ST, BURBANK, CA 91505



**RILEY ROHDE**  
858.369.3041  
[riley.rohde@kidder.com](mailto:riley.rohde@kidder.com)  
LIC N° 02207141

**ROBERT FLETCHER**  
858.369.3034  
[robert.fletcher@kidder.com](mailto:robert.fletcher@kidder.com)  
LIC N° 01706060

**ERIC KNOWLES**  
858.369.3017  
[eric.knowles@kidder.com](mailto:eric.knowles@kidder.com)  
LIC N° 00944210

**KIDDER.COM**

This information supplied herein is from sources we deem reliable. It is provided without any representation, warranty, or guarantee, expressed or implied as to its accuracy. Prospective Buyer or Tenant should conduct an independent investigation and verification of all matters deemed to be material, including, but not limited to, statements of income and expenses. Consult your attorney, accountant, or other professional advisor.

