

FOR SALE

Three (3) Medical Office Condo Units
903 E. Devonshire Avenue, Hemet, California 92544



Three Condo Units – Totaling ± 5,680 Square Feet:

Suite B: ±1,905 square feet

Suites C & D: ± 3,775 square feet (± 1,905 & 1,870)

- Fully built-out medical suites
- One block from hospital
- Good parking
- APN's: 445-350-014, 445-350-015, 445-360-016

Sale Price: \$1,500,000

(Shown by appointment only)

DRE License No. 01138381

FOR ADDITIONAL INFORMATION CONTACT

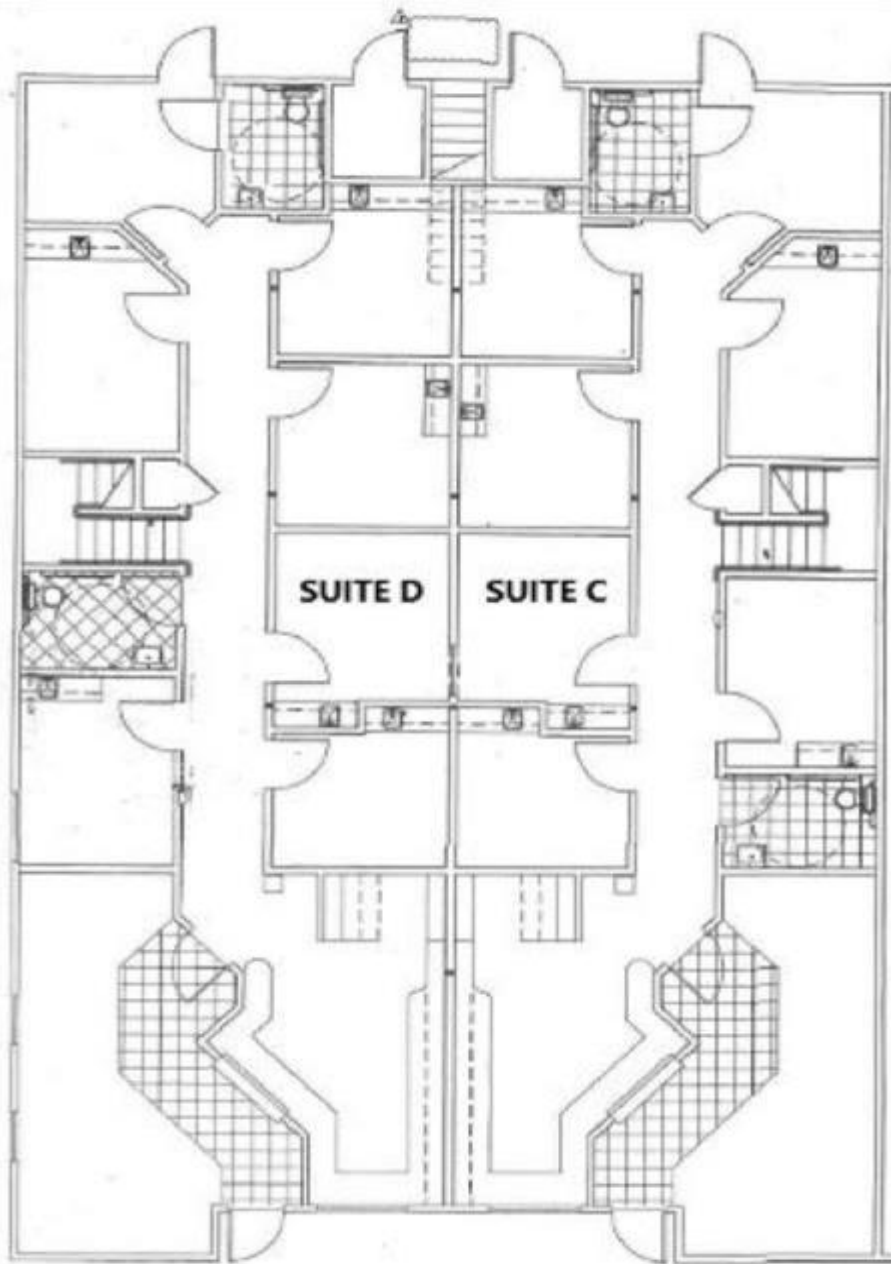
Guy W. Excell or Howard B. Rosenthal

(951) 658-2559



Rosenthal & Excell
Commercial Real Estate Services

1600 East Florida Avenue, Suite 110
Hemet, California 92544
(951) 658-2559 • Fax: (951) 658-7690
email: hrge@rosenthalexcell.com



Floor Plan – Ground Floor
903 E. Devonshire Avenue, Suites C & D, Hemet, CA 92543
The actual buildout may be different from this sketch
Buyer to verify layout and tenant improvements

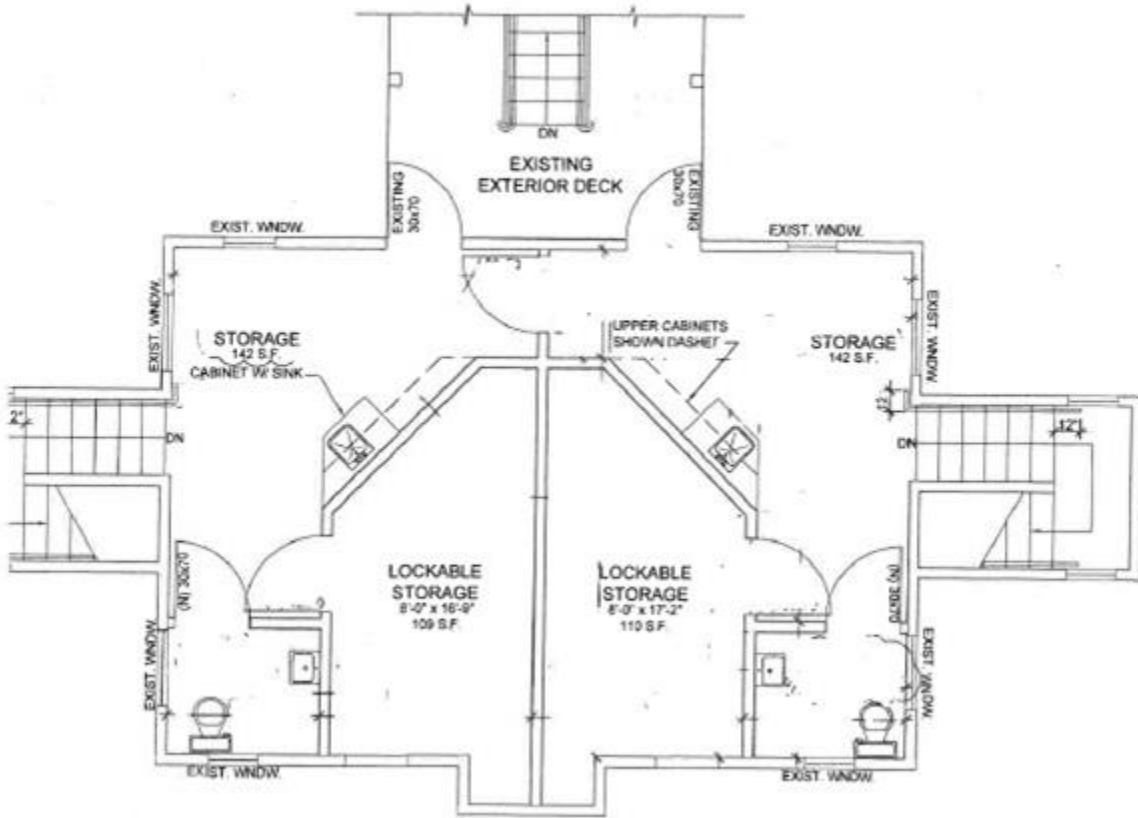
DRE License No. 01138381

FOR ADDITIONAL INFORMATION CONTACT
Guy W. Excell or Howard B. Rosenthal
(951) 658-2559



Rosenthal & Excell
Commercial Real Estate Services

1600 East Florida Avenue, Suite 110
Hemet, California 92544
(951) 658-2559 • Fax: (951) 658-7690
email: hrge@rosenthalexcell.com



Floor Plan – Upper Floor
903 E. Devonshire Avenue, Suite B, Hemet, CA 92543
 The actual buildout may be different from this sketch
 Buyer to verify layout and tenant improvements

DRE License No. 01138381

FOR ADDITIONAL INFORMATION CONTACT
Guy W. Excell or Howard B. Rosenthal
(951) 658-2559



Rosenthal & Excell
 Commercial Real Estate Services

1600 East Florida Avenue, Suite 110
 Hemet, California 92544
 (951) 658-2559 • Fax: (951) 658-7690
 email: hrge@rosenthalexcell.com

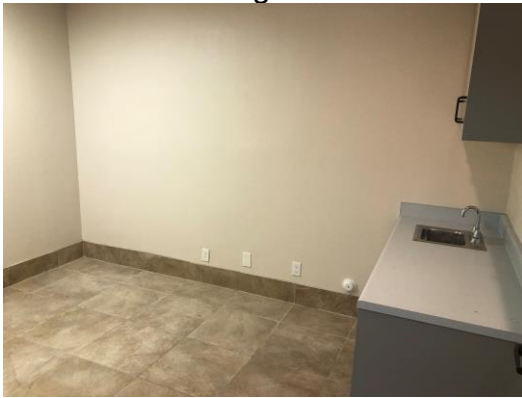
ite B Downstairs



Waiting Room



Business Office



Exam Room #1



Exam Room #2



DRE License No. 01138381

FOR ADDITIONAL INFORMATION CONTACT

Guy W. Excell or Howard B. Rosenthal

(951) 658-2559



Rosenthal & Excell
Commercial Real Estate Services

1600 East Florida Avenue, Suite 110
Hemet, California 92544
(951) 658-2559 • Fax: (951) 658-7690
email: hрге@rosenthalexcell.com

Exam Room #3



Exam Room #4



Exam Room #5



Doctor's Office



Lab



Hallway



DRE License No. 01138381

FOR ADDITIONAL INFORMATION CONTACT

Guy W. Excell or Howard B. Rosenthal

(951) 658-2559



Rosenthal & Excell
Commercial Real Estate Services

1600 East Florida Avenue, Suite 110
Hemet, California 92544
(951) 658-2559 • Fax: (951) 658-7690
email: hrge@rosenthalexcell.com

Office Restroom

Doctor's Restroom

Suite B's
Upstairs Area



Upstairs Restroom



Upstairs



Upstairs

DRE License No. 01138381

FOR ADDITIONAL INFORMATION CONTACT

Guy W. Excell or Howard B. Rosenthal

(951) 658-2559



Rosenthal & Excell
Commercial Real Estate Services

1600 East Florida Avenue, Suite 110
Hemet, California 92544
(951) 658-2559 • Fax: (951) 658-7690
email: hрге@rosenthalexcell.com