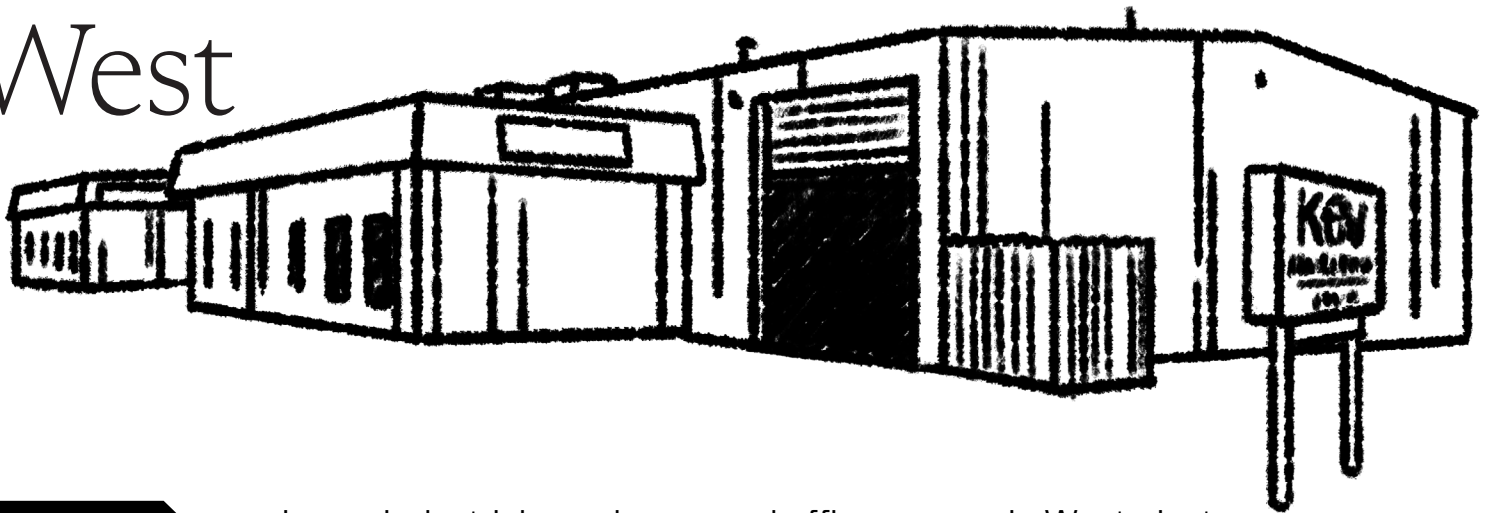




Kew Industrial West

7015 - 7101 Julian Street
Westminster, CO 80031



About

- Large industrial warehouse and office spaces in Westminster
- Located near RTD B-Line Light Rail Westminster Station
- Located in Adams County Enterprise Zone
- Easy access to Federal Blvd, I-76, I-25, and US-36
- Flex space for wide range of uses and ample on-site parking

Details

ADDRESS	7015 - 7101 Julian Street
CITY + COUNTY	Westminster, Adams
NUMBER OF BUILDINGS	4
CONSTRUCTED	1974-1977
OWNER	KEW Realty Corporation



KEW Realty Corporation

300 S Jackson St #550
Denver, Colorado 80209

kewrealty.com

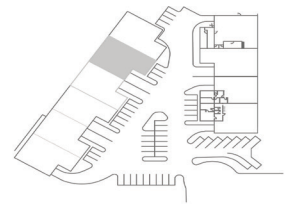
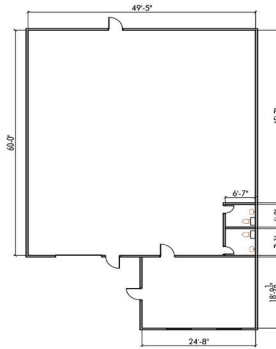
Kew Industrial West

7015 - 7101 Julian Street
Westminster, CO 80031



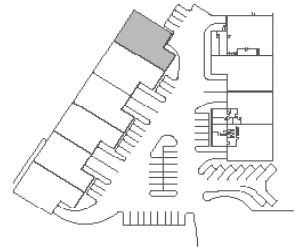
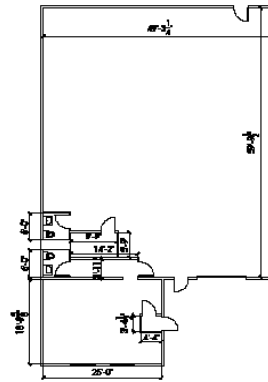
Availability

ADDRESS	7015 Julian Street - Unit 9
SF	3,500 SF
RATE SF/YR	9.00/SF
DETAILS	This unit includes 1 drive-in door. Contiguous with Unit 10 for a total of 7,000 SF.



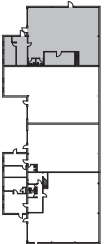
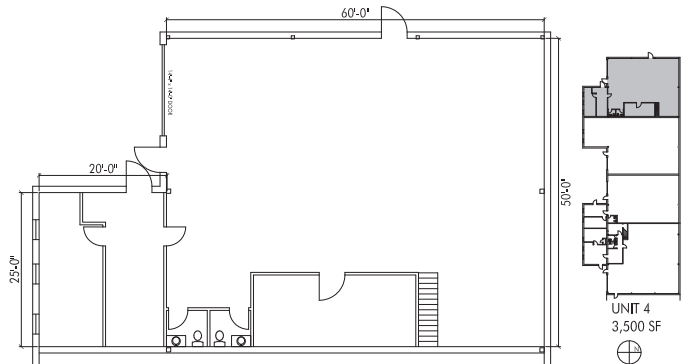
UNIT 9
3,443 SF

ADDRESS	7015 Julian Street - Unit 10
SF	3,500 SF
RATE SF/YR	9.00/SF
DETAILS	This industrial warehouse-flex space has 1 private office, 2 private bathrooms, a storage closet, and a large open space.

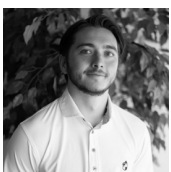


UNIT 10
3,500 SF

ADDRESS	7101 Julian Street - Unit 4
SF	3,500 SF
RATE SF/YR	9.00/SF
DETAILS	This industrial unit includes a large open warehouse space, 2 private offices, storage space, and 2 restrooms.



UNIT 4
3,500 SF



Blake Ham
Leasing Manager

720.308.2230
bham@kewrealty.com



kewrealty.com