

**FOR SALE | INDUSTRIAL**

## Spriggs Building

124 Eva Street, Saint Paul, MN 55107



The Spriggs Building is strategically located in the heart of Saint Paul's industrial district, just south of downtown and the Mississippi River. The 9,100-square-foot facility features internal loading docks capable of accommodating trailers up to 50 feet in length. The property includes a 4,200-square-foot open warehouse area and front office spaces with an abundance of glass lines consisting of four private offices, an open work area, a conference room, and a break room.

### Property Features

- 9,102 square feet building
- 2,000 SF internal loading dock
- 4 private offices
- Break room
- Conference room
- 0.66 acres
- Listing price \$1,595,000



2026 Taxes - \$31,400

### Contact Us

**ERIC DUEHOLM**  
Partner



651.621.2550  
[eric@terracegroupllc.com](mailto:eric@terracegroupllc.com)

**BEN BRUNO**  
Brokerage Services



651.621.2563  
[ben@terracegroupllc.com](mailto:ben@terracegroupllc.com)

**TONY ROSSATO**  
Brokerage Services



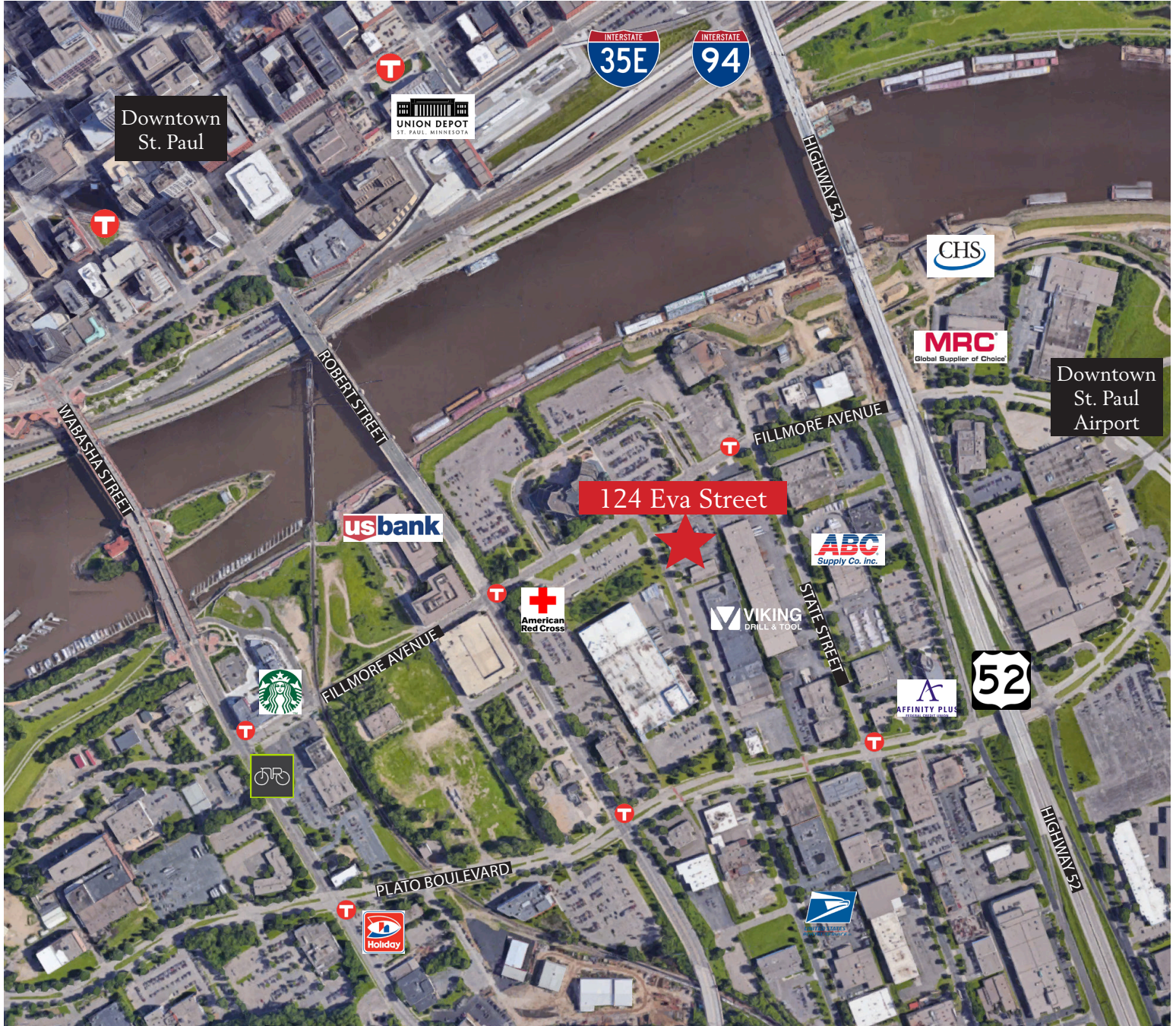
651.621.2507  
[tony@terracegroupllc.com](mailto:tony@terracegroupllc.com)

Full Property Information at:  
[124evastreet.com](http://124evastreet.com)

**FOR SALE | INDUSTRIAL**  
**Spriggs Building**  
124 Eva Street, Saint Paul, Minnesota 55107



### Area Map



ERIC DUEHOLM  
Partner  
651.621.2550  
eric@terracegroupllc.com

BEN BRUNO  
Brokerage Services  
651.621.2563  
ben@terracegroupllc.com

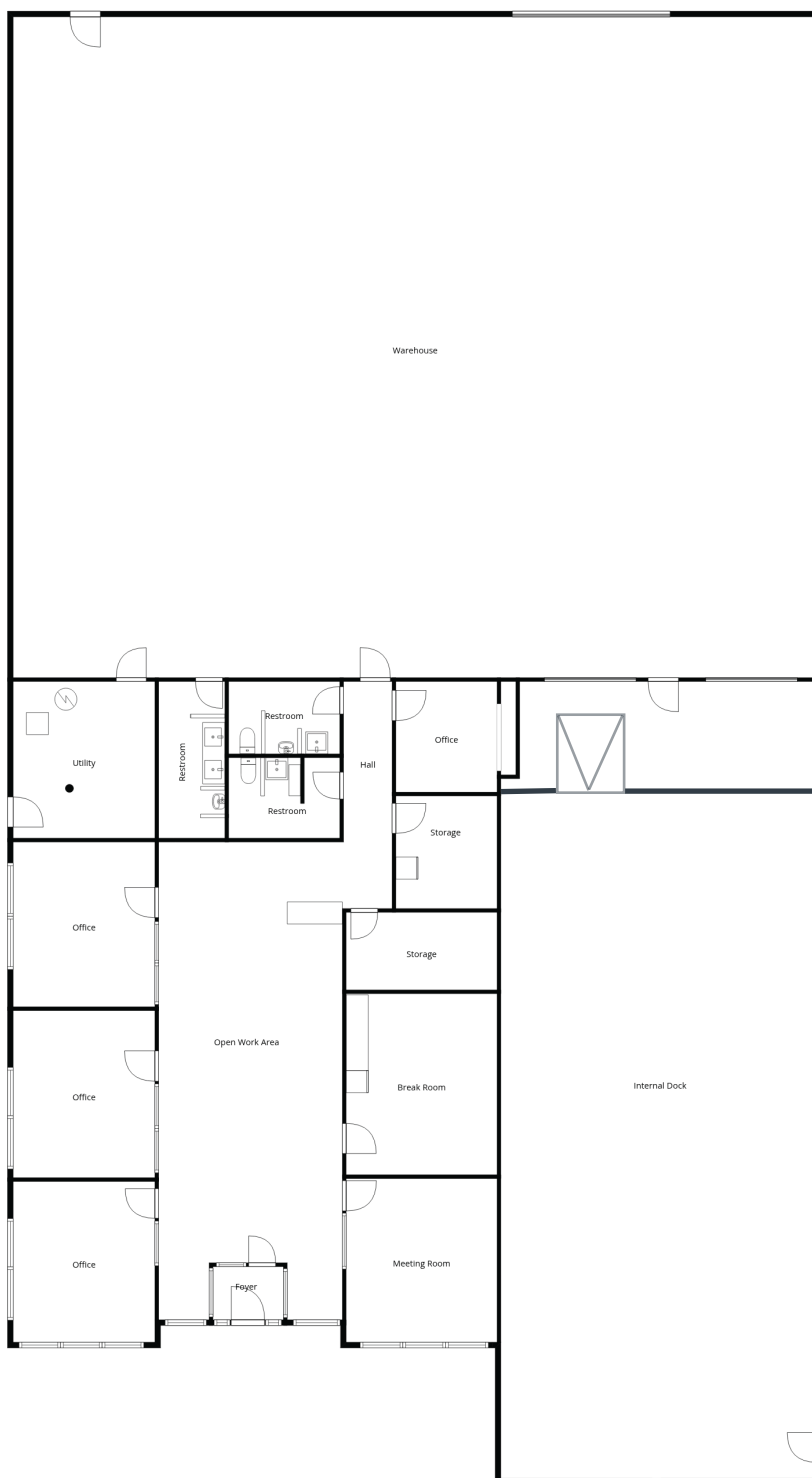
TONY ROSSATO  
Brokerage Services  
651.621.2507  
tony@terracegroupllc.com

Full Property Information at:  
**124evastreet.com**

**FOR SALE | INDUSTRIAL**  
**Spriggs Building**  
124 Eva Street, Saint Paul, Minnesota 55107



## Floorplan



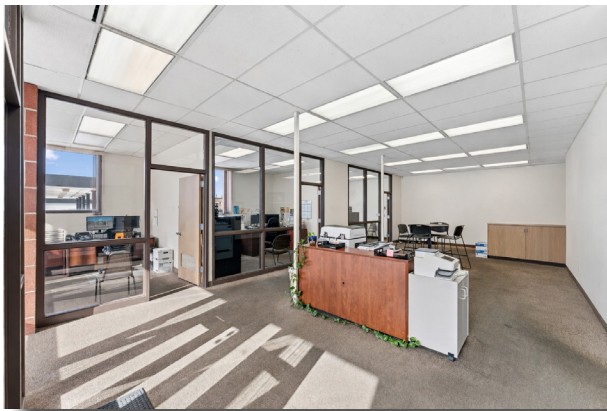
**ERIC DUEHOLM**  
Partner  
651.621.2550  
[eric@terracegrouppllc.com](mailto:eric@terracegrouppllc.com)

**BEN BRUNO**  
Brokerage Services  
651.621.2563  
[ben@terracegrouppllc.com](mailto:ben@terracegrouppllc.com)

**TONY ROSSATO**  
Brokerage Services  
651.621.2507  
[tony@terracegrouppllc.com](mailto:tony@terracegrouppllc.com)

Full Property Information at:  
**124evastreet.com**

**FOR SALE | INDUSTRIAL**  
**Spriggs Building**  
124 Eva Street, Saint Paul, Minnesota 55107



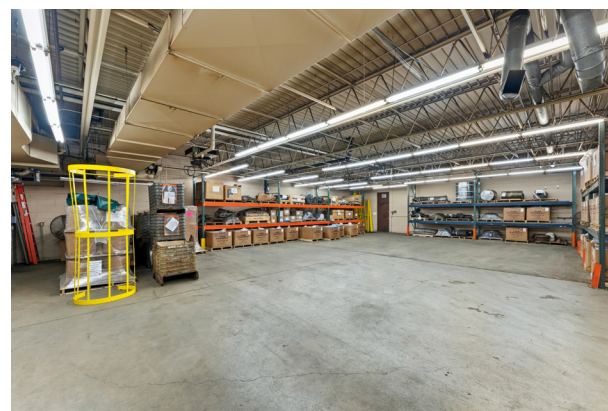
**ERIC DUEHOLM**  
Partner  
651.621.2550  
[eric@terracegroupllc.com](mailto:eric@terracegroupllc.com)

**BEN BRUNO**  
Brokerage Services  
651.621.2563  
[ben@terracegroupllc.com](mailto:ben@terracegroupllc.com)

**TONY ROSSATO**  
Brokerage Services  
651.621.2507  
[tony@terracegroupllc.com](mailto:tony@terracegroupllc.com)

**Full Property Information at:**  
**[124evastreet.com](http://124evastreet.com)**

**FOR SALE | INDUSTRIAL**  
**Spriggs Building**  
124 Eva Street, Saint Paul, Minnesota 55107



*Information is deemed reliable; however, no warranty or representation is made as to its accuracy or completeness. Property is subject to price change, prior sale or lease, and withdrawal from the market, all without notice.*

**ERIC DUEHOLM**

Partner

651.621.2550

[eric@terracegroupllc.com](mailto:eric@terracegroupllc.com)

**BEN BRUNO**

Brokerage Services

651.621.2563

[ben@terracegroupllc.com](mailto:ben@terracegroupllc.com)

**TONY ROSSATO**

Brokerage Services

651.621.2507

[tony@terracegroupllc.com](mailto:tony@terracegroupllc.com)

**Full Property Information at:**  
**[124evastreet.com](http://124evastreet.com)**