

EXECUTIVE SUMMARY



OFFERING SUMMARY

| | |
|---------------|---------------|
| Available SF: | 1,938 SF |
| Lease Rate | \$18.00/sf MG |
| Lot Size: | 0.52 Acres |
| Year Built: | 2003 |

PROPERTY OVERVIEW

A prime leasing opportunity at 7015 North Robinson Avenue, Oklahoma City. This property features six spacious offices, a breakroom with a sink, two bathrooms, a welcoming reception area, and ample parking. Perfect for businesses seeking functional, well-appointed commercial space in a convenient location. Located just West of I-235 and just North of NW 63rd with easy access to I-44 interchange.

PROPERTY HIGHLIGHTS

- Six large offices
- Breakroom with sink
- 2 Bathrooms
- Reception area
- Ample Parking

corry@creekcre.com
405.845.5101
CORRY MAZZA

chase@creekcre.com
405.570.3606
CHASE ANDERSON

ADDITIONAL PHOTOS

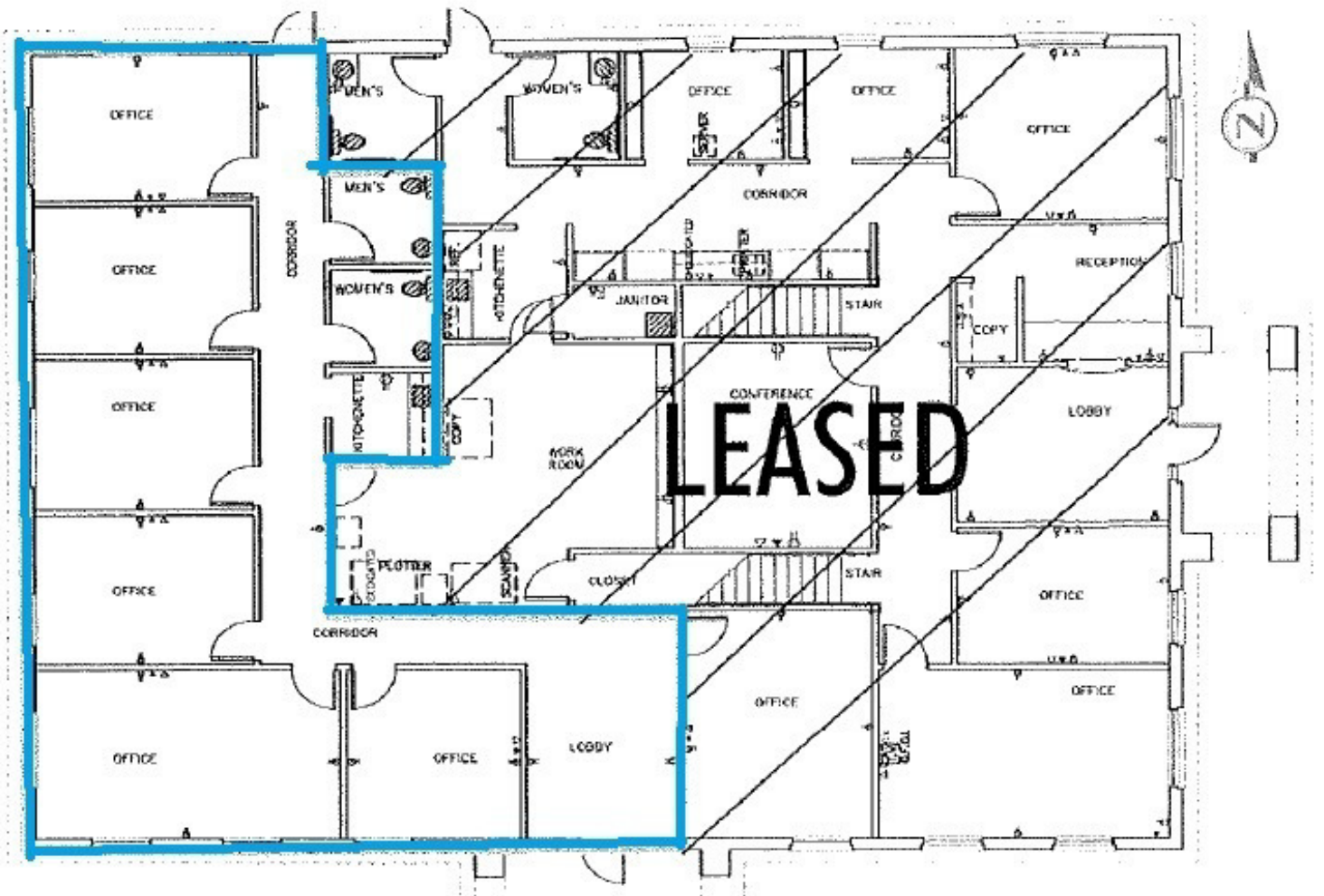


corry@creekcre.com
405.845.5101
CORRY MAZZA

chase@creekcre.com
405.570.3606
CHASE ANDERSON

FLOOR PLANS

Floor Plan



corry@creekcre.com
405.845.5101
CORRY MAZZA

chase@creekcre.com
405.570.3606
CHASE ANDERSON

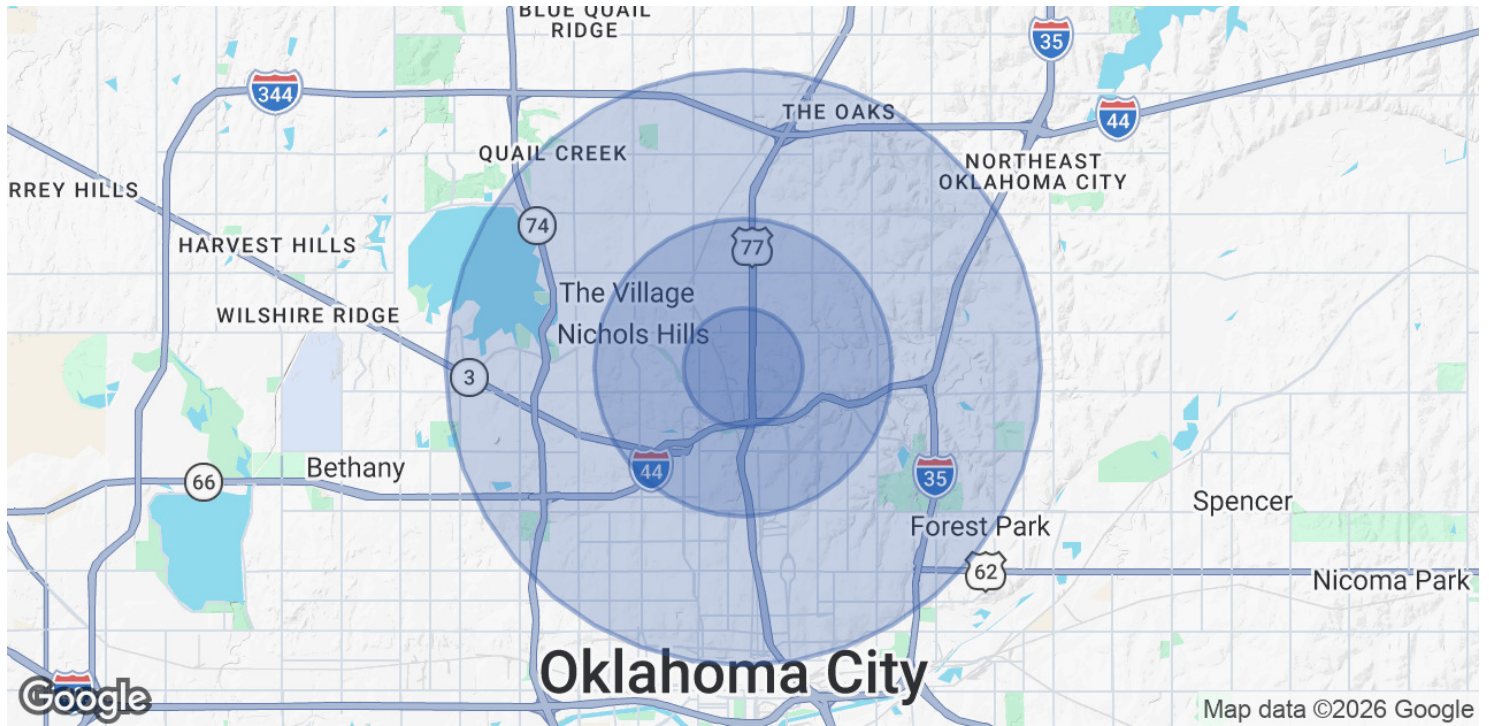
LOCATION MAP



corry@creekcre.com
405.845.5101
CORRY MAZZA

chase@creekcre.com
405.570.3606
CHASE ANDERSON

DEMOGRAPHICS MAP & REPORT



| POPULATION | 1 MILE | 2.5 MILES | 5 MILES |
|----------------------|--------|-----------|---------|
| Total Population | 2,868 | 35,195 | 165,455 |
| Average Age | 40 | 40 | 39 |
| Average Age (Male) | 38 | 39 | 38 |
| Average Age (Female) | 42 | 42 | 40 |

| HOUSEHOLDS & INCOME | 1 MILE | 2.5 MILES | 5 MILES |
|---------------------|-----------|-----------|-----------|
| Total Households | 1,205 | 15,596 | 75,456 |
| # of Persons per HH | 2.4 | 2.3 | 2.2 |
| Average HH Income | \$94,135 | \$99,939 | \$81,333 |
| Average House Value | \$380,435 | \$404,110 | \$293,147 |

2020 American Community Survey (ACS)

corry@creekcre.com
 405.845.5101
CORRY MAZZA

chase@creekcre.com
 405.570.3606
CHASE ANDERSON