

# 510 E Township Line Road

**FOR LEASE | 21,417 RSF AVAILABLE | CLASS A MEDICAL OFFICE BUILDING**

---

Blue Bell, PA



# Property overview

## Established Medical Campus with Modern Amenities

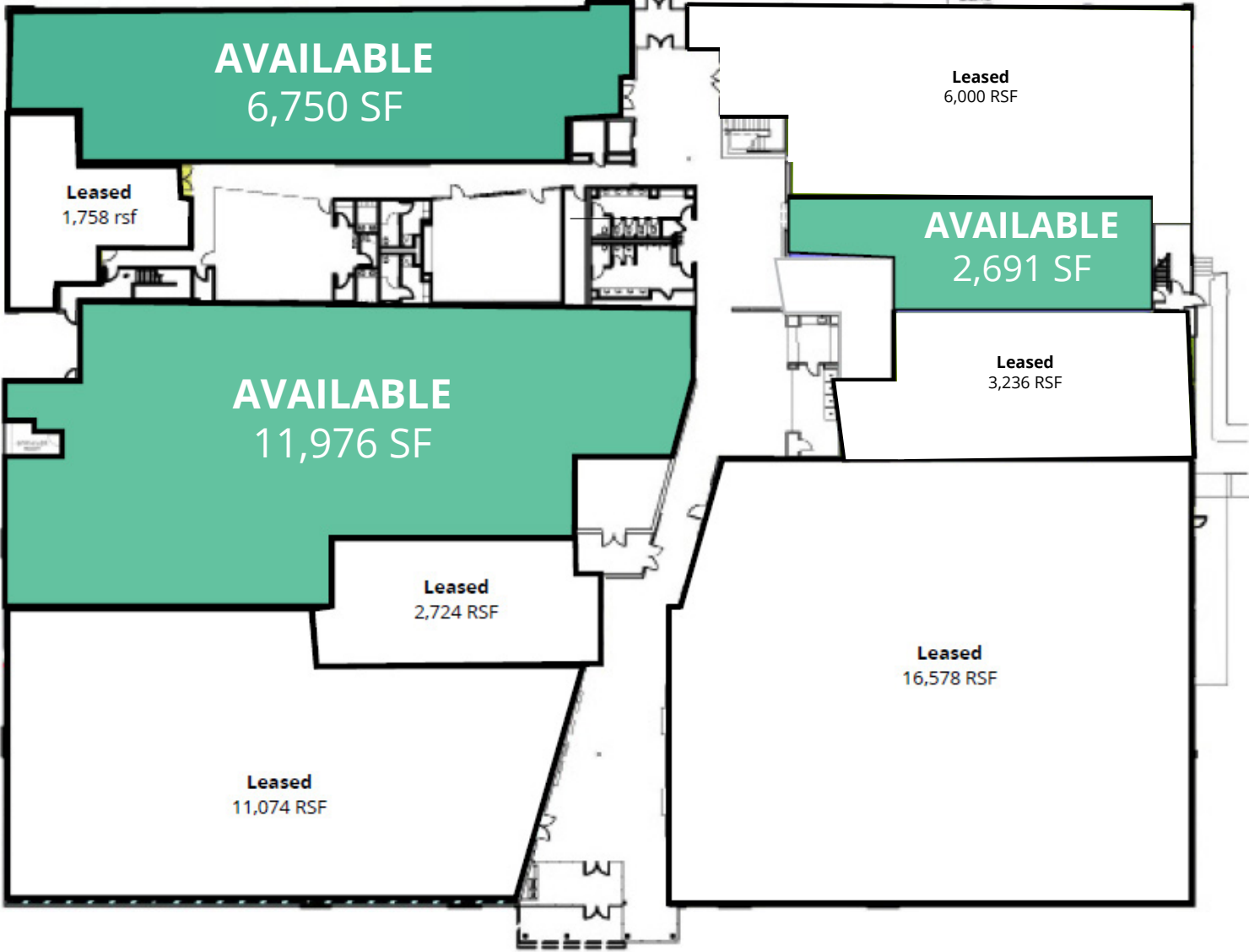
Located in Blue Bell, 510 E Township Line Road offers a premier healthcare leasing opportunity within a Class A medical office environment designed to enhance both patient experience and provider operations. The property features fully upgraded lobbies and common areas and highly accessible first-floor suites positioned steps from exterior entrances for seamless patient flow. With new HVAC systems, abundant parking, and premium onsite amenities, the building supports modern healthcare delivery in a highly visible, signaled location.

- Fully upgraded lobbies & common areas with Class A finishes
- Strong complementary medical tenant mix
- 1st floor suites with immediate exterior access
- New HVAC systems throughout
- 4.7/1,000 SF parking ratio
- High-end grab-and-go café with seating
- Complimentary conferencing facility (±40 people)
- Tenant-only fitness center with new locker rooms & showers
- Hardscaped outdoor patio with WiFi
- Signalized access to Township Line & Walton Roads



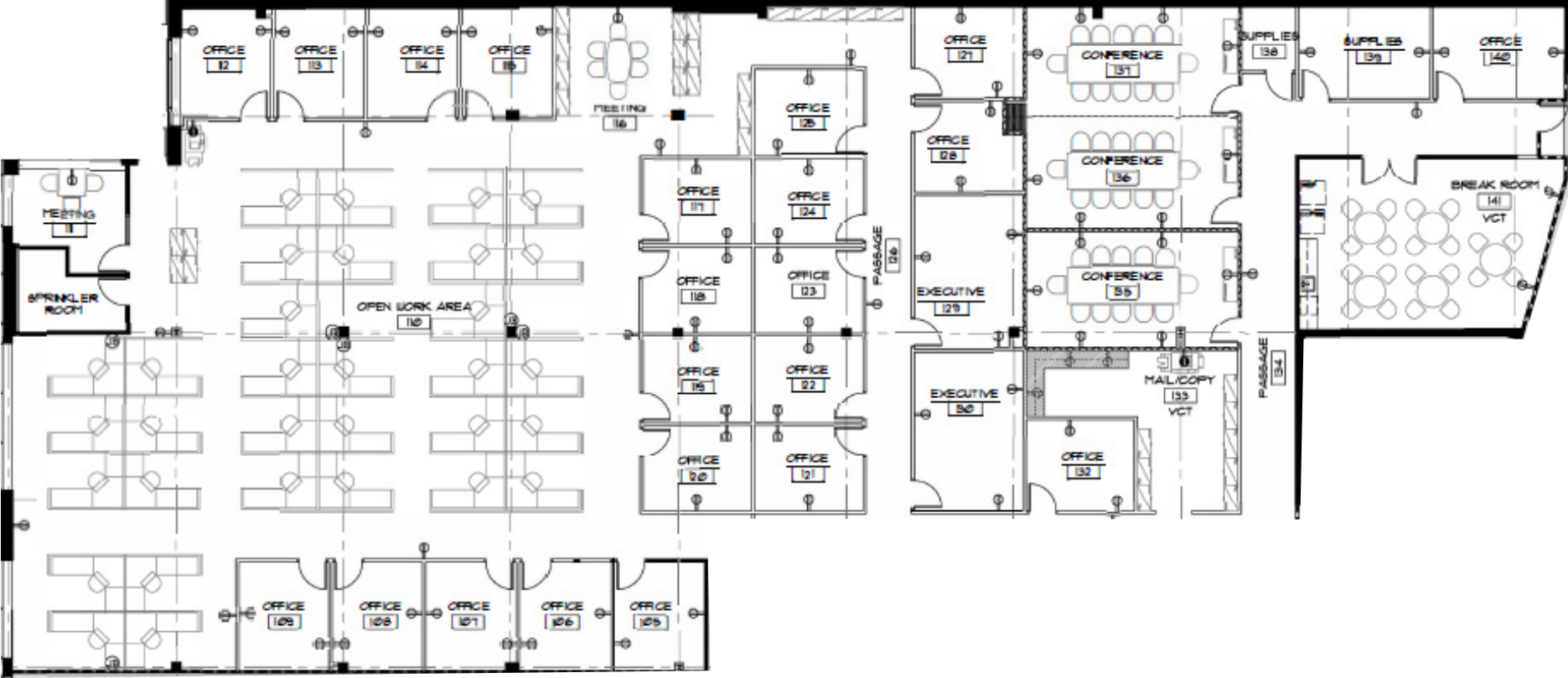
# Floor plans

21,417 RSF Available



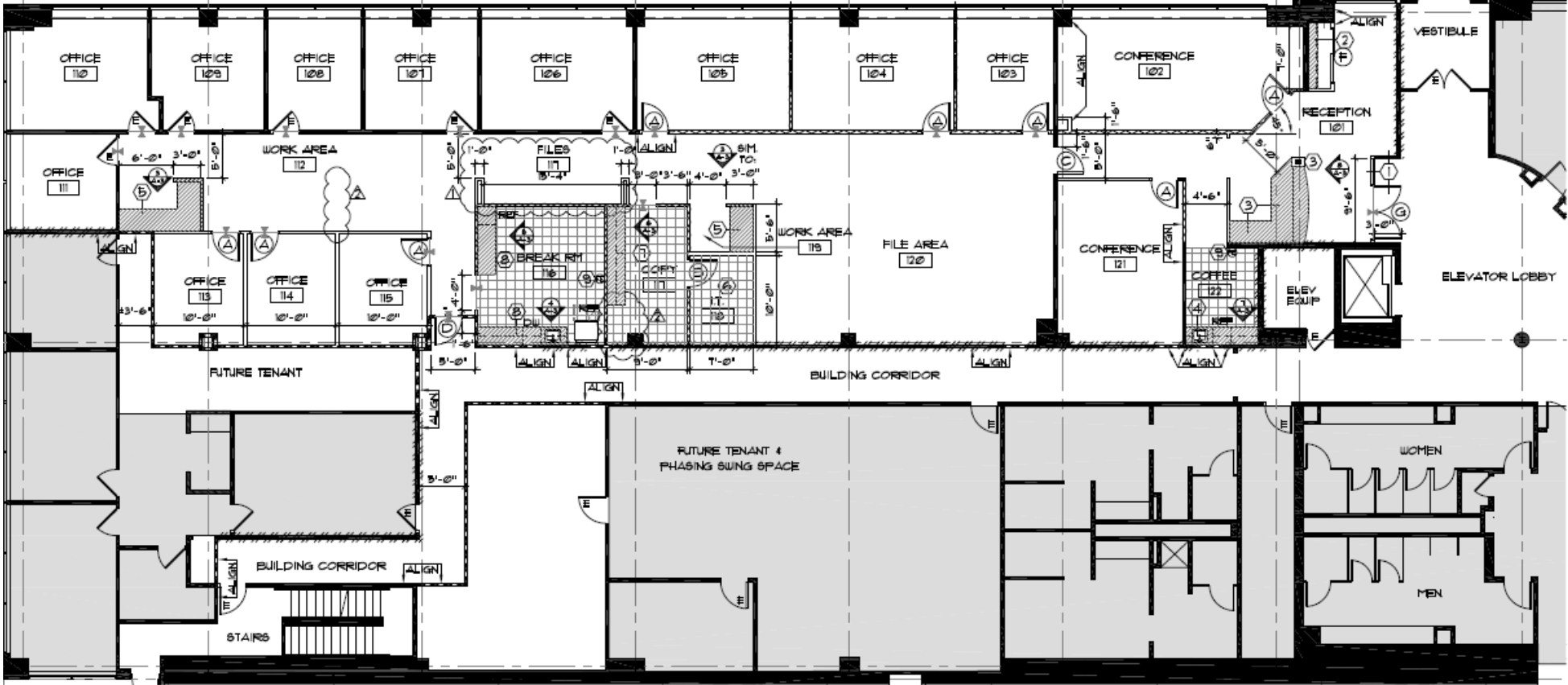
# Floor plans

1st Floor | 11,976 SF



# Floor plans

1st Floor | 6,750 SF



# Location overview

## Steps from Township Line & Walton Roads

Located in the sought-after Blue Bell submarket, 510 E Township Line Road offers high visibility and direct access at the signalized intersection of Township Line and Walton Roads. The property is well-connected to I-476 (Blue Route) for easy regional travel and is surrounded by a dense, growing population with strong demand for medical services, supported by nearby retail, dining, and lifestyle amenities.



Highly visible, prestigious medical office submarket in Montgomery County



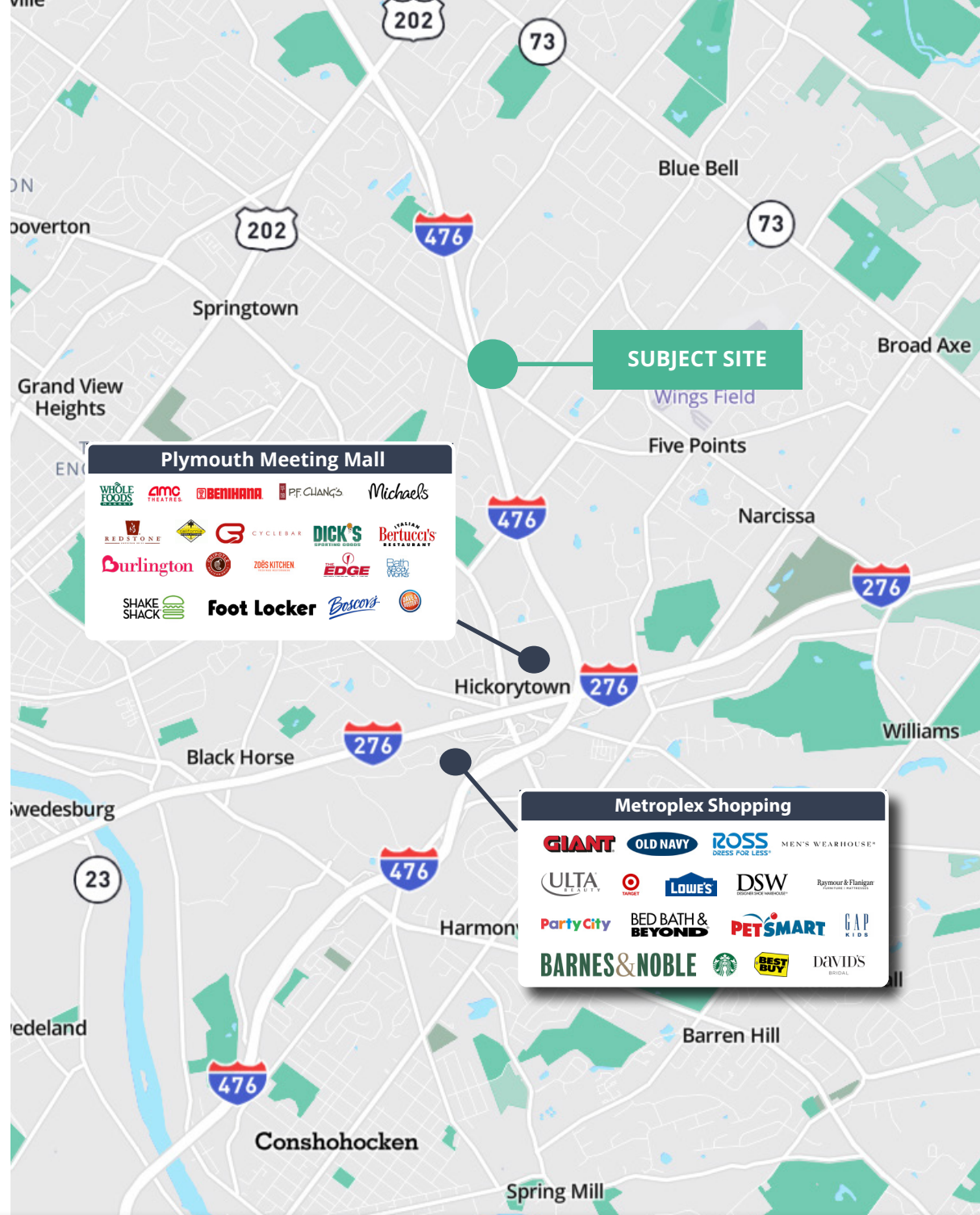
Immediate proximity to I-476 (Blue Route) for regional connectivity



Nearby retail, dining, and lifestyle amenities for employees and patients



Dense, growing residential population supporting healthcare demand





**ROTHMAN**  
ORTHOPAEDICS

**Get in touch with  
our leasing team**

**Patrick Kelley**  
Principal  
610 276 1080  
patrick.kelley@avisonyoung.com

**John Sudjian**  
Associate  
610 2761080  
john.sudjian@avisonyoung.com

**Visit us online**  
[avisonyoung.com](http://avisonyoung.com)

---

© 2026. Avison Young. Information contained herein was obtained from sources deemed reliable and, while thought to be correct, have not been verified. Avison Young does not guarantee the accuracy or completeness of the information presented, nor assumes any responsibility or liability for any errors or omissions therein.

**AVISON  
YOUNG**