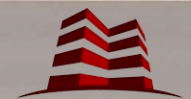


650 N. FIRST BANK DRIVE



MOATS
OFFICE PROPERTIES

ABOUT US

For over 32 years, **Moats Office Properties** has owned and operated office buildings in Chicago's Northwest suburbs.

We are a family owned and operated business and strive for the best in customer satisfaction.

650 N. FIRST BANK DRIVE AT-A-GLANCE

1-Story Building - 4,029 SF

Lot Size: 0.69 Acres

Parking: ~4/1K SF

Class B Professional

Building Signage Available

Monument Signage Available

BUILDING SUMMARY

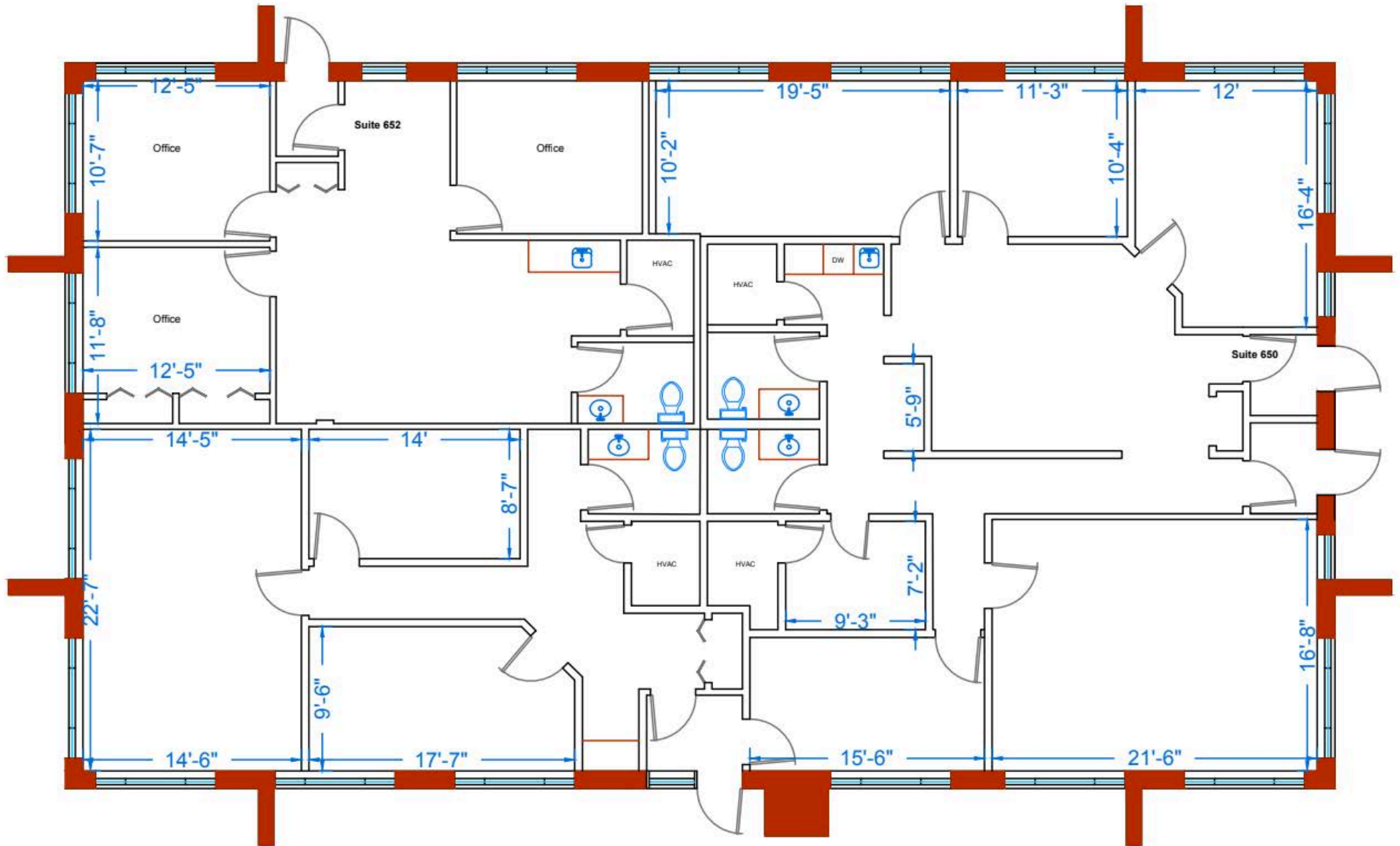
- **For Sale By Owner**

Value Drivers

- Situated in the desirable **Palatine Office Park**
- **Boutique single-story layout** with deep roof overhangs ideal for ease of access and privacy
- **Multiple entrances** and clear address visibility
- **Well-maintained landscaping** and updated curb appeal
- **Flexible floor plan** allows for multi-tenant

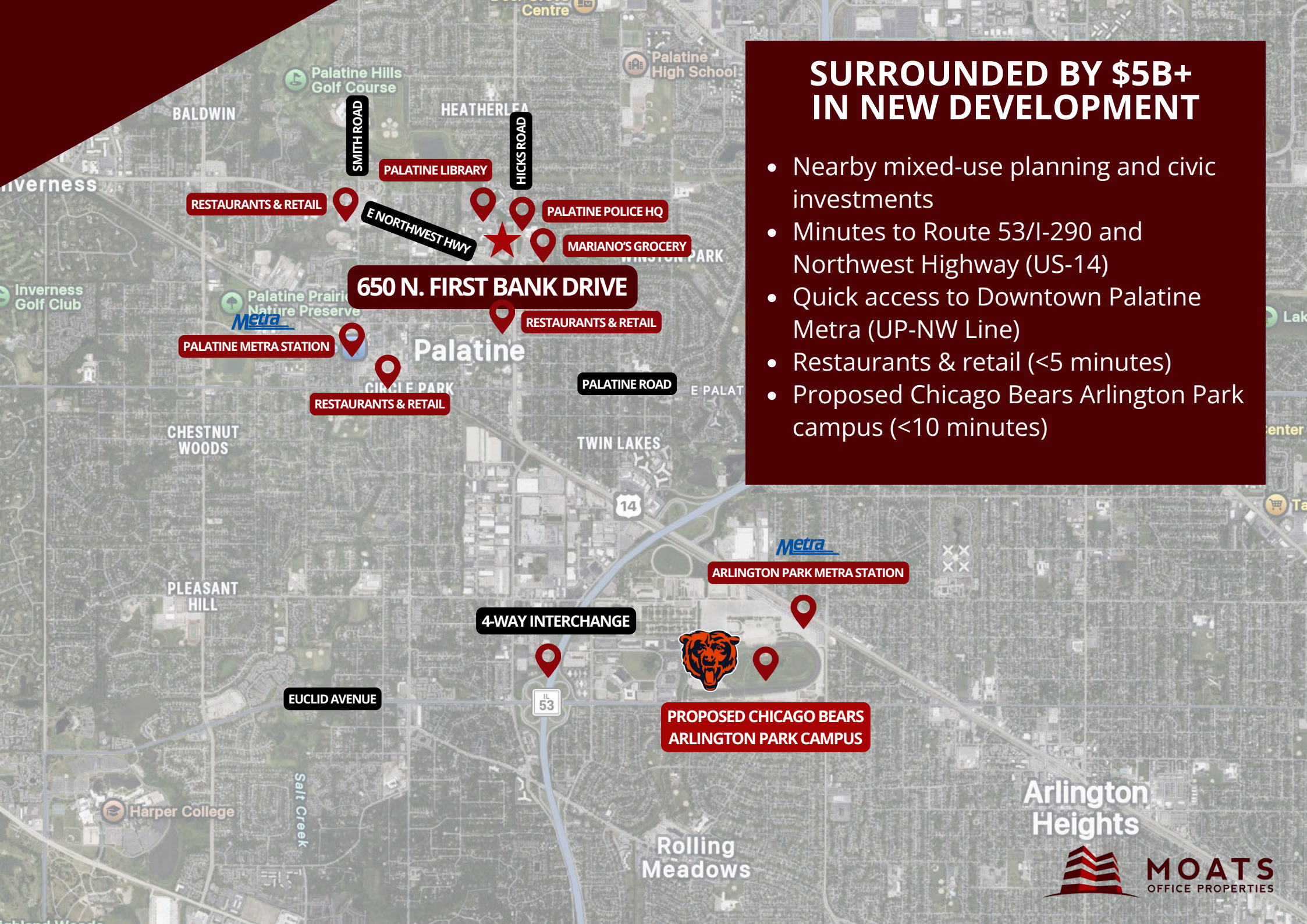
FLOORPLAN AVAILABLE

650 N. FIRST BANK DRIVE



SURROUNDED BY \$5B+ IN NEW DEVELOPMENT

- Nearby mixed-use planning and civic investments
- Minutes to Route 53/I-290 and Northwest Highway (US-14)
- Quick access to Downtown Palatine Metra (UP-NW Line)
- Restaurants & retail (<5 minutes)
- Proposed Chicago Bears Arlington Park campus (<10 minutes)



650 N. FIRST BANK DRIVE

4-WAY INTERCHANGE

**PROPOSED CHICAGO BEARS
ARLINGTON PARK CAMPUS**

**Arlington
Heights**



MOATS
OFFICE PROPERTIES

MAIN ENTRANCE

650

MONUMENT SIGNAGE AVAILABLE

N. FIRST BANK DRIVE

HICKS ROAD

E. NORTHWEST HWY

PALATINE LIBRARY



N. FIRST BANK DRIVE

MAIN ENTRANCE

MONUMENT SIGNAGE AVAILABLE

PALATINE POLICE DEPARTMENT



650

PALATINE DISTRICT OFFICE



N. NORTH COURT

HICKS ROAD

MARIANO'S GROCERY



FIRST BANK & TRUST



E. NORTHWEST HWY



MOATS
OFFICE PROPERTIES

CONTACT

RYAN MOATS

Owner & Operator

847.363.9700

Ryan@MoatsOffice.com

www.MoatsOffice.com

TO LEARN MORE, VISIT OUR
WEBSITE OR SCAN OUR QR CODE:

