

# MOVE-IN READY OFFICE SPACE

בסייד

## AVAILABLE FOR LEASE IN BEVERLY HILLS

8909 W. OLYMPIC BLVD  
BEVERLY HILLS, CA 90211

**Jeffrey E. Resnick**

310.922.1717

jresnick@cagre.com

Lic. 00405333

**Adam Funk**

310.666.0124

afunk@cagre.com

Lic. 02129715



COMMERCIAL  
ASSET GROUP



## SPACE INFORMATION

### PROPERTY HIGHLIGHTS

- Move-in Ready Beverly Hills Office Space
- Operable windows
- Wooden floors
- Ample natural light
- Located between Doheny Dr. and Robertson Blvd.
- Nearby amenities include: La Provence Patisserie & Cafe, Natalee Thai, Sushi 101, Toppings Yogurt, and Starbucks

These materials are based on information and content provided by others, which we believe are accurate. No guarantee, warranty or representation is made by Commercial Asset Group, Inc. or its personnel. All interested parties must independently verify accuracy and completeness. As well, any projections, assumptions, opinion or estimates are used for example only and do not represent the current or future performance of the identified property. Your tax, financial, legal and toxic substance advisors should conduct a careful investigation of the property and its suitability for your needs including land use limitations. The property is subject to prior lease, sale, change in price, or withdrawal from the market without notice.

#### RENTAL RATE

SUITE 208:  
\$2.99 PSF/MO, FSG

#### SPACE SIZE

SUITE 208:  
±1,422 SF

#### AVAILABILITY

IMMEDIATELY

#### PARKING

\$150/MO,  
3 SPACES AVAILABLE

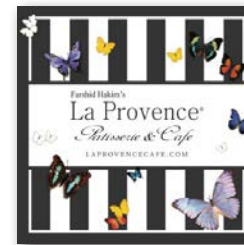
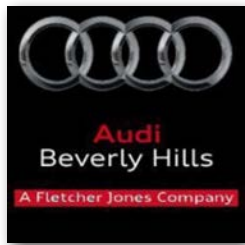
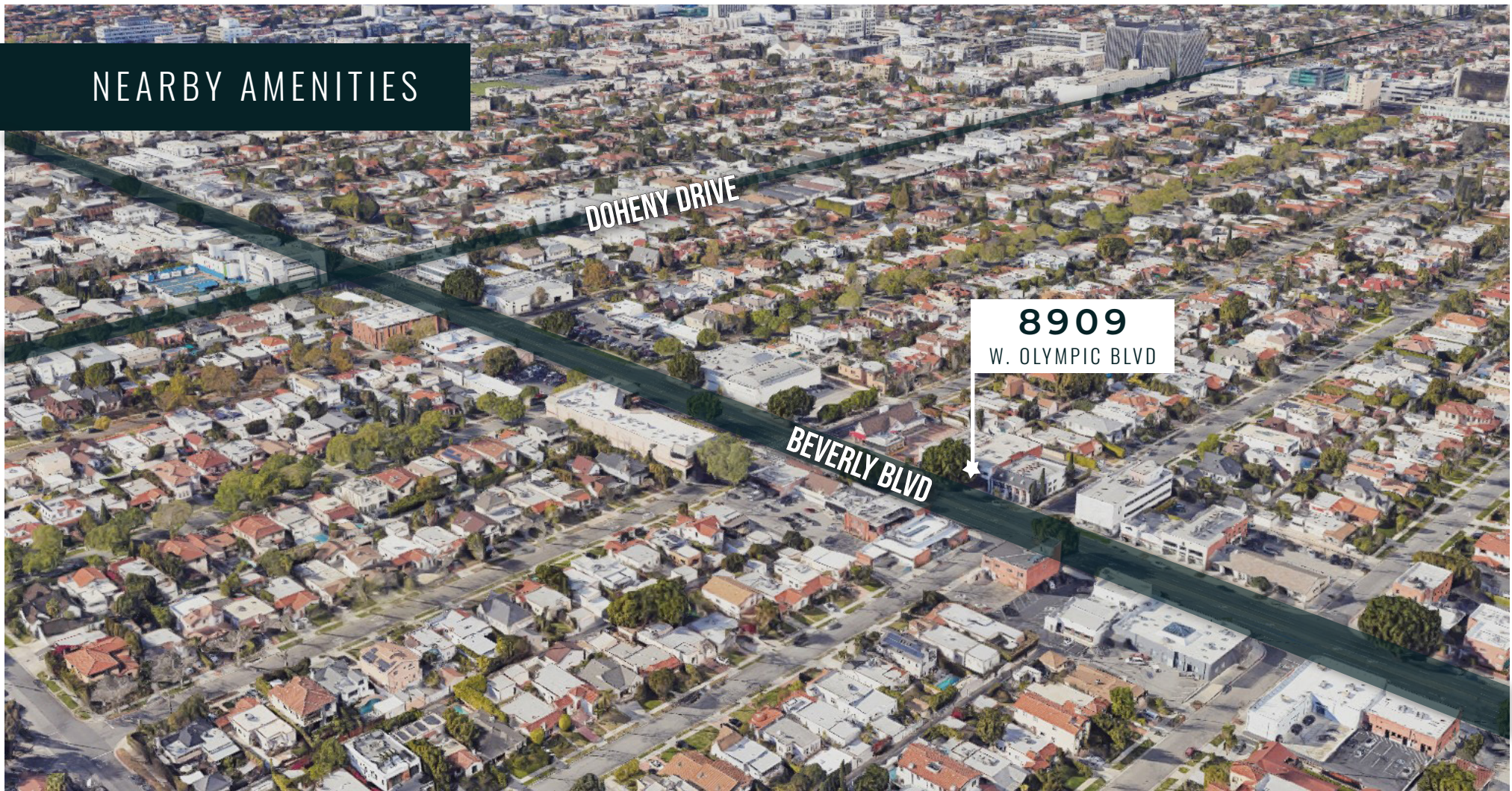
#### TERM

NEGOTIABLE

8909 W. OLYMPIC BLVD, BEVERLY HILLS, CA 90211



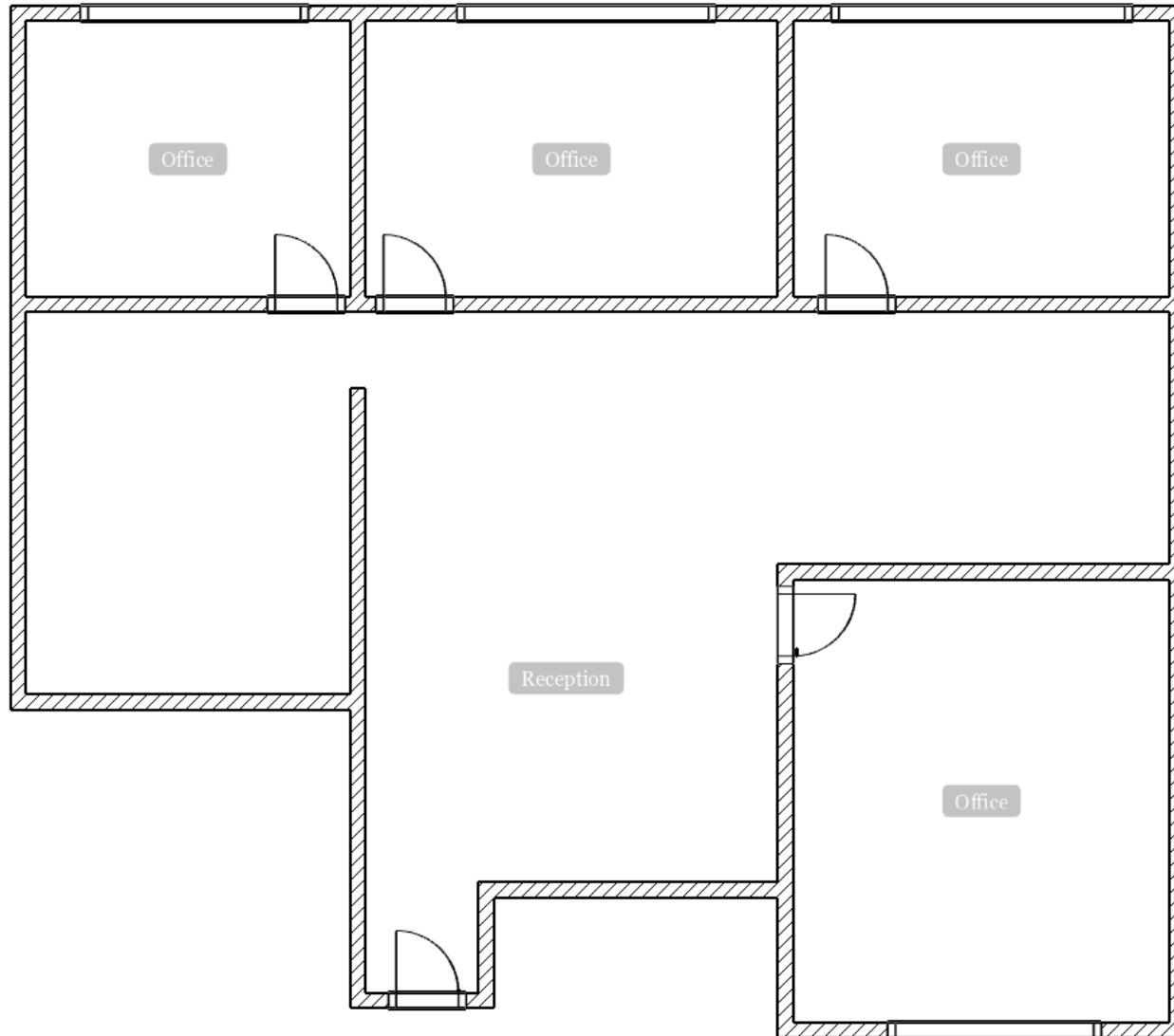
## NEARBY AMENITIES





# SUITE 208

±1,422 SF



## SUITE 208 PHOTOS





**Jeffrey E. Resnick**  
310.922.1717  
jresnick@cagre.com  
Lic. 00405333

**Adam Funk**  
310.666.0124  
afunk@cagre.com  
Lic. 02129715

**Commercial Asset Group**  
1801 Century Park East, Ste 1550  
Los Angeles, CA 90067  
P 310.275.8222 F 310.275.8223  
www.cagre.com Lic. 01876070



**COMMERCIAL  
ASSET GROUP**