



# 260 | Peachtree

*An Atlanta Landmark In Our Thriving Business District*



## SUITE 1900 12,341 SF AVAILABLE

### *Suite 1900 Features*

- Highly upgraded Suite
- 3 offices, (2 on glass)
- 12 person, conference room on glass
- Large open area for cubicles/ collaborative area
- Break room and work room
- Valet parking
- Superior fiber optic access
- On-site management and ownership
- Downtown opportunity zone location

260 | 270 Peachtree

Team

Greg Kindred — *Senior Vice President*  
gkindred@richardbowers.com

Ash Parker — *Senior Vice President*  
aparker@richardbowers.com

Leslie Kellar — *Marketing Director*  
lkellar@rbmanagement.com

404-816-1600





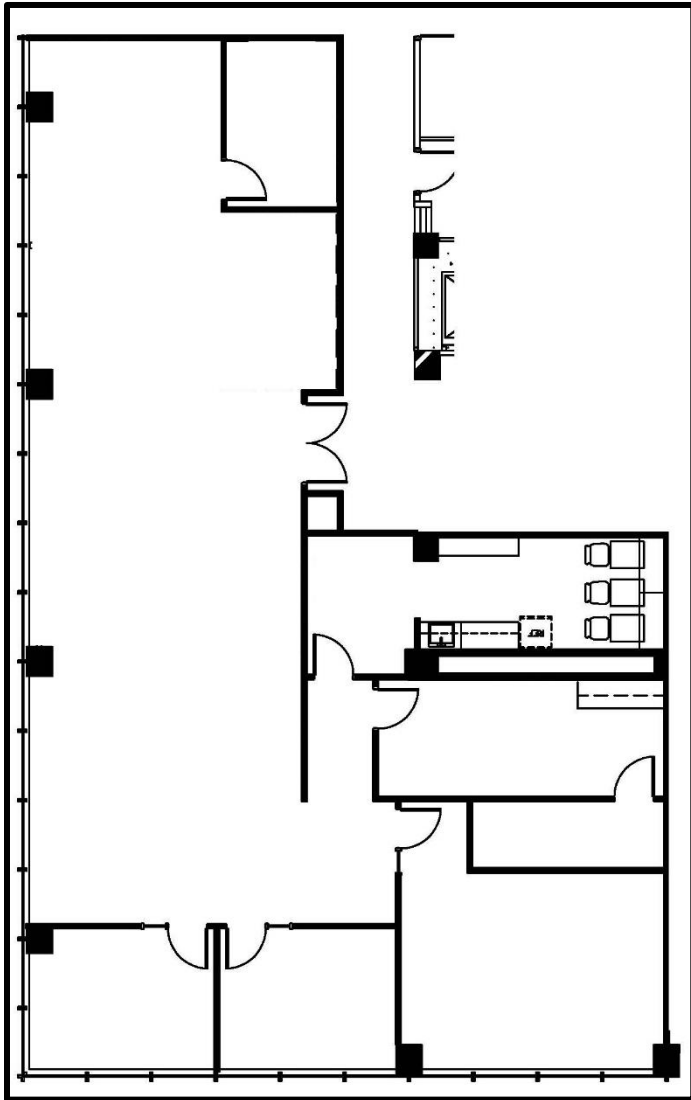


# 260 | Peachtree

*An Atlanta Landmark In Our Thriving Business District*

## SUITE 1900

3,376 RSF AVAILABLE



**Peachtree Street**

