



PROPERTY INFORMATION

- 43,900 SF TOTAL AVAILABLE ON 8.495 ACRES
- BUILDING 1: 19,400 SF TWO STORY OFFICE
- BUILDING 2: 16,500 SF WAREHOUSE
 - (3) 14' X 16' DRIVE-THRU BAYS
 - (2) 14' X 16' GL DOORS
 - (2) 10' X 12' GL DOORS; (1) 10' X 8' GL DOOR
 - CLEAR HEIGHT: 22'
- BUILDING 3: 8,000 SF WAREHOUSE
 - (4) 11' X 14' GL DOORS
 - CLEAR HEIGHT: 20'

- FENCED YARD
- UP TO 17.376 ACRES OF YARD AVAILABLE
 - ADDITIONAL \$5,000 PER MONTH PER ACRE
- 3 PHASE POWER | 240 VOLT | 800 AMP
- ZONING: M-1 (LIGHT INDUSTRIAL)
- AMPLE PARKING
- BUILT IN 1993
- EASY ACCESS TO I-15

LEASE RATE : \$1.50/SF MONTH NNN

CONTACT

801.617.1700

WEST HARADIN

west.haradin@crcnationwide.com

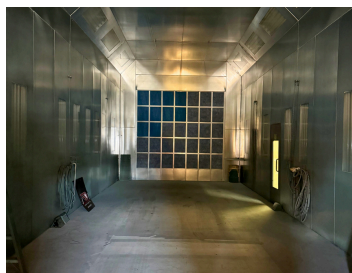
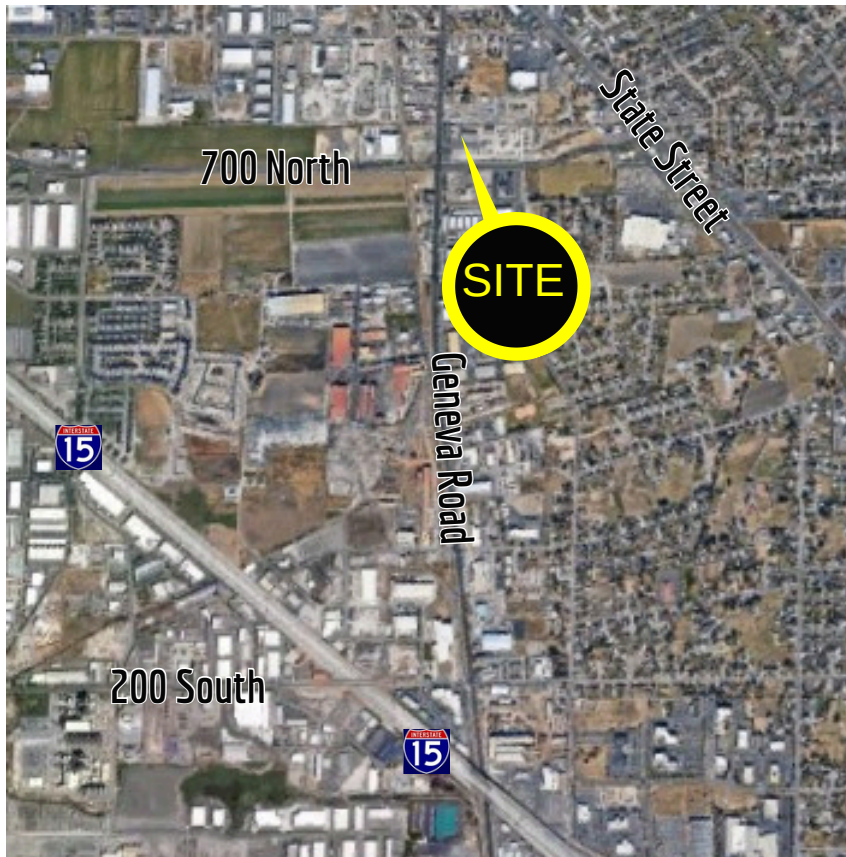
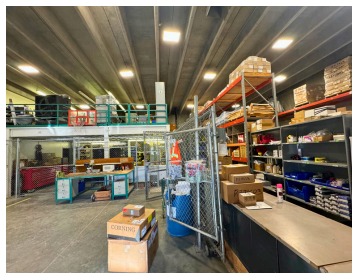
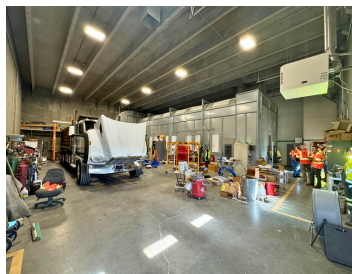
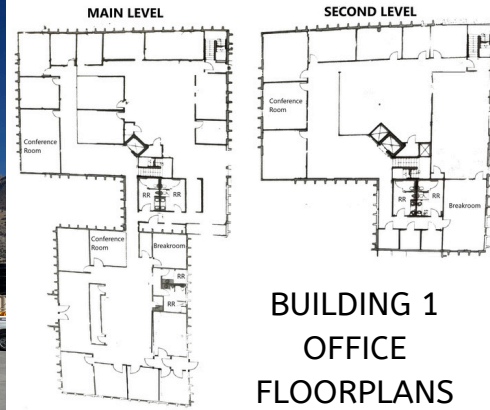
CRYSTAL JOHNSON

crystal.johnson@crcnationwide.com



LINDON OFFICE/WAREHOUSE WITH YARD FOR LEASE

786 NORTH GENEVA ROAD, LINDON, UTAH 84042



This information is given with the understanding that all negotiations and/or real estate activity related to the property described above shall be conducted through this cRc Nationwide office. The above information while not guaranteed, was obtained from sources we believe to be reliable.