

1128 NORTH BULLDOG ROAD

MW

DO NOT DISTURB TENANTS

FOR SALE OR LEASE



Bulldog Road

PROPERTY DETAILS

1128 NORTH BULLDOG ROAD, CEDAR CITY, UT 84721

- 16,000 SF
 - » Approximately 3,000 SF of Office/Showroom
 - » Approximately 13,000 SF of Shop
- 4.5 Acres Total
- Nine (9) 12'x18' Ground Level Doors
- Four (4) Drive Thru Bays
- 20' Clear Height
- 3 Phase Power / 208V / 400 Amps
- Glycol Fire Suppression System
- Easy Access
- I-15 Frontage
- Lease Rate: \$25,000 / Month / NNN
- Purchase Price: \$5,300,000
- All Showings Must be Coordinated Through the Listing Agents

2024 DEMOS

EST. POPULATION

1 MILE » 6,011
3 MILE » 35,428
5 MILE » 47,476

EST. HOUSEHOLDS

1 MILE » 2,203
3 MILE » 12,421
5 MILE » 16,385

EST. MEDIAN HH INCOME

1 MILE » \$56,805
3 MILE » \$68,890
5 MILE » \$71,334



MOUNTAIN WEST
COMMERCIAL REAL ESTATE

CBRE

TROY SCHEEL

tscheel@mwcre.com
direct 435.256.8774
[View Profile](#)

SCOTT SPRUNT

ssprunt@mwcre.com
direct 435.256.8355
[View Profile](#)

CHRIS LIDDELL

chris.liddell@cbre.com
direct 801.869.8007
[View Profile](#)

FULL SERVICE COMMERCIAL REAL ESTATE

335 East St. George Blvd, Suite 202
St. George, UT 84770
Office 435.656.5500
www.mwcre.com



MOUNTAIN WEST
COMMERCIAL REAL ESTATE

CBRE

TROY SCHEEL

tscheel@mwcre.com
direct 435.256.8774
[View Profile](#)

SCOTT SPRUNT

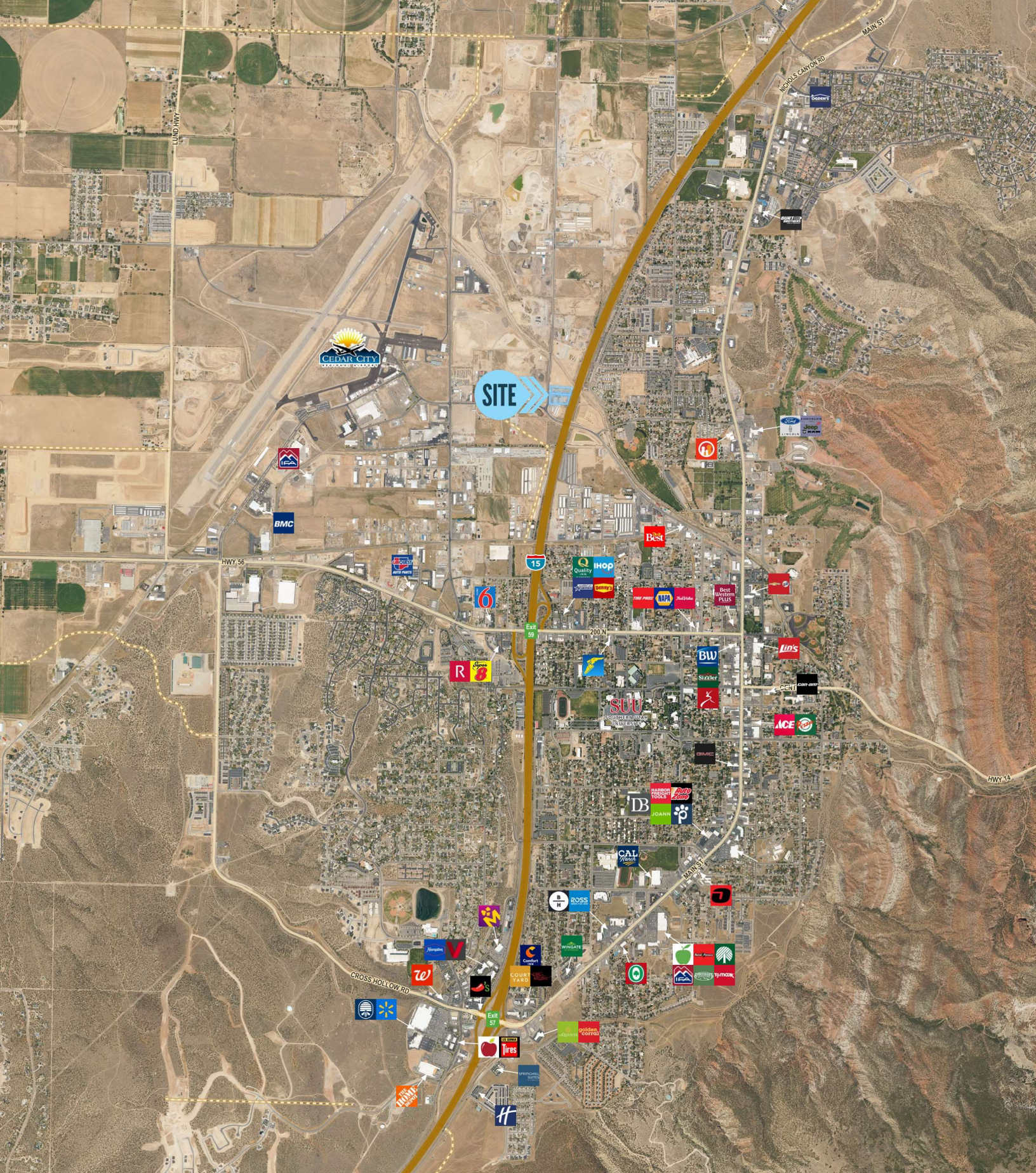
ssprunt@mwcre.com
direct 435.256.8355
[View Profile](#)

CHRIS LIDDELL

chris.liddell@cbre.com
direct 801.869.8007
[View Profile](#)

**FULL SERVICE
COMMERCIAL REAL ESTATE**

335 East St. George Blvd, Suite 202
St. George, UT 84770
Office 435.656.5500
www.mwcre.com



MOUNTAIN WEST
COMMERCIAL REAL ESTATE

CBRE

TROY SCHEEL

tscheel@mwcre.com
direct 435.256.8774
[View Profile](#)

SCOTT SPRUNT

ssprunt@mwcre.com
direct 435.256.8355
[View Profile](#)

CHRIS LIDDELL

chris.liddell@cbre.com
direct 801.869.8007
[View Profile](#)

**FULL SERVICE
COMMERCIAL REAL ESTATE**

335 East St. George Blvd, Suite 202
St. George, UT 84770
Office 435.656.5500
www.mwcre.com