

TURN-KEY RESTAURANT BUILDING

190 E Main St, Canton, GA 30114

FOR SALE OR LEASE

6,100 SF

PROPERTY HIGHLIGHTS

- 2nd-generation restaurant includes all furniture, fixtures, and restaurant equipment
- Historic location in downtown Canton, directly across from the Canton Theater
- Currently configured with 200 seats, including separate dining and bar areas on 2 levels



COURTNEY BRUMBELOW

P: 770.913.3905

E: cbrumbelow@ackermanco.net

Ackerman Retail
A DIVISION OF ACKERMAN & CO

TURN-KEY RESTAURANT BUILDING

190 E Main St, Canton, GA 30114



Ackerman Retail

COURTNEY BRUMBELOW

P: 770.913.3905

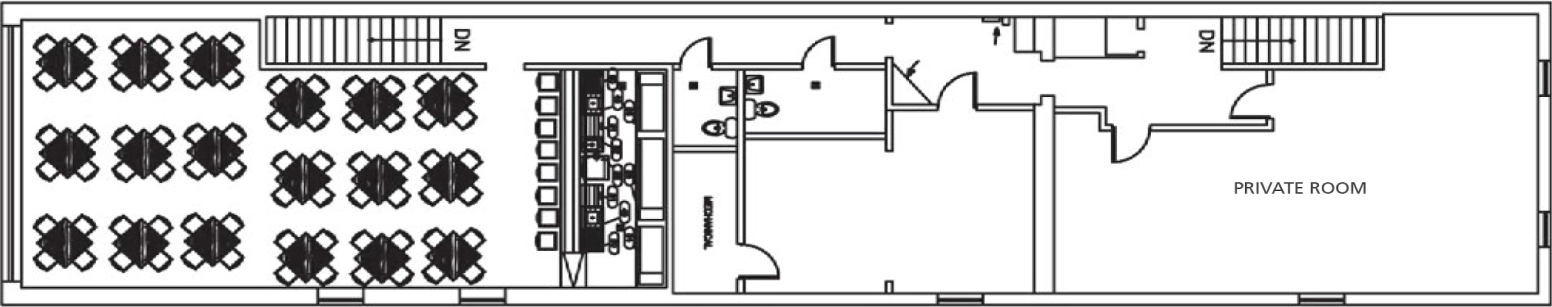
E: cbrumbelow@ackermanco.net

©2024 Ackerman & Co. All rights reserved. While we have no reason to doubt the accuracy of the information provided from sources we deem reliable, we cannot guarantee it and therefore assume no liability for errors, omissions or changes to this content. Sources include CoStar, SitesUSA, ESRI, and Georgia DOT.

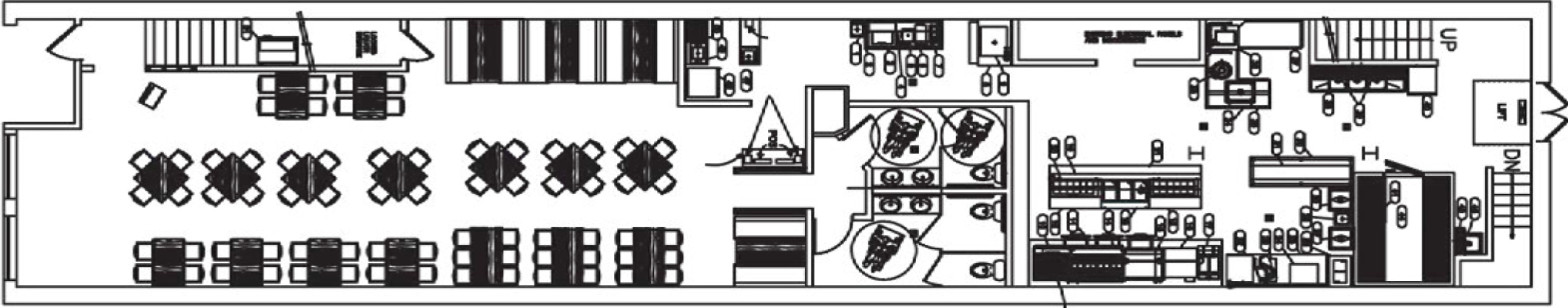
TURN-KEY RESTAURANT BUILDING

190 E Main St, Canton, GA 30114

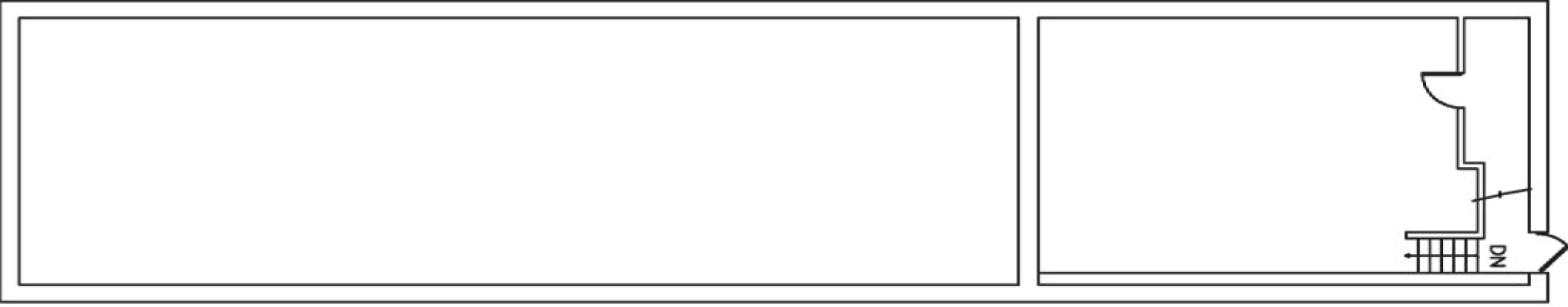
SECOND FLOOR



FIRST FLOOR



BASEMENT



Ackerman Retail

COURTNEY BRUMBELOW

P: 770.913.3905

E: cbrumbelow@ackermanco.net

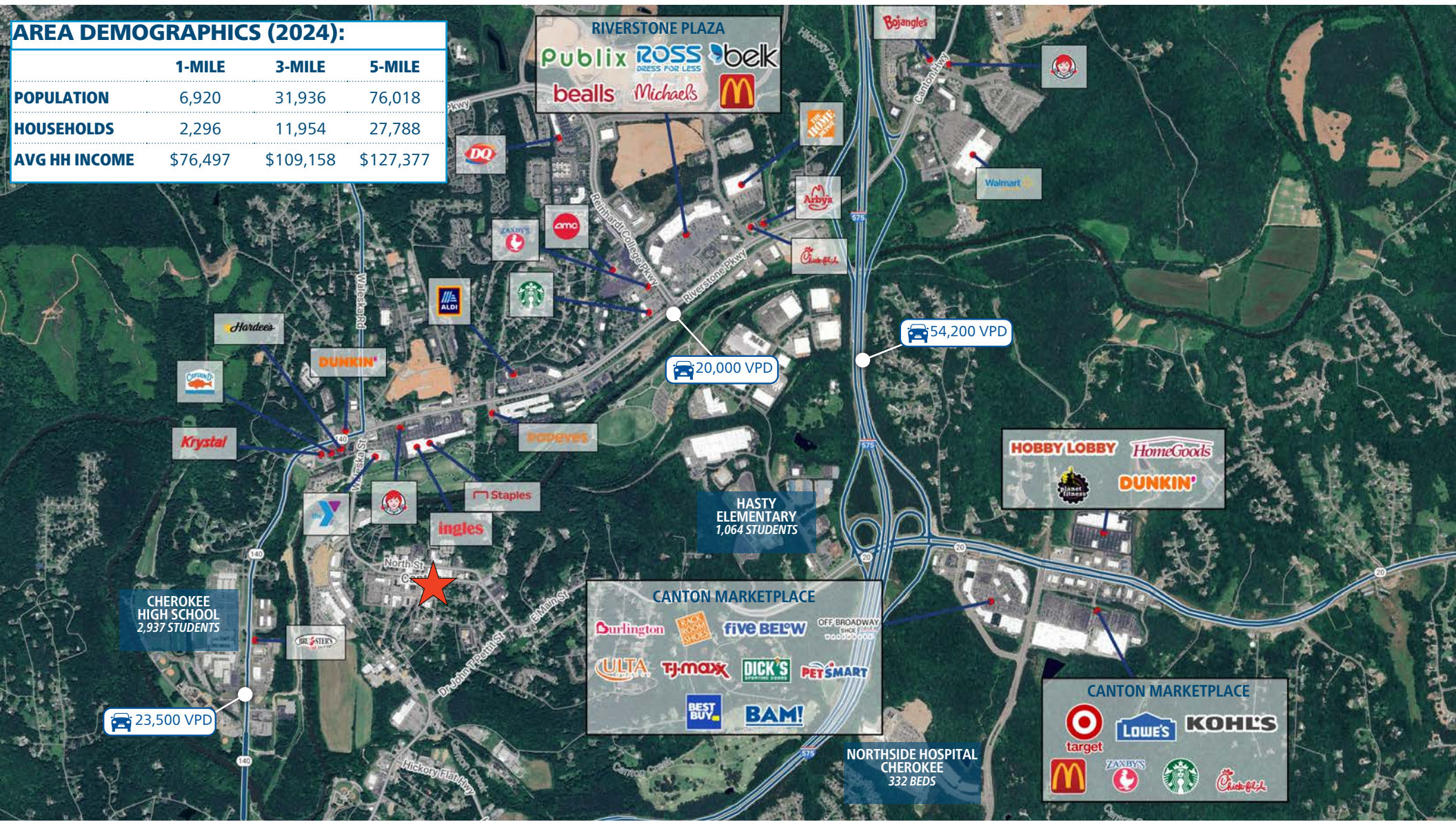
©2024 Ackerman & Co. All rights reserved. While we have no reason to doubt the accuracy of the information provided from sources we deem reliable, we cannot guarantee it and therefore assume no liability for errors, omissions or changes to this content. Sources include CoStar, SitesUSA, ESRI, and Georgia DOT.

TURN-KEY RESTAURANT BUILDING

190 E Main St, Canton, GA 30114

AREA DEMOGRAPHICS (2024):

	1-MILE	3-MILE	5-MILE
POPULATION	6,920	31,936	76,018
HOUSEHOLDS	2,296	11,954	27,788
AVG HH INCOME	\$76,497	\$109,158	\$127,377



Ackerman Retail

COURTNEY BRUMBLOW

P: 770.913.3905

E: cbrumbelow@ackermanco.net

©2024 Ackerman & Co. All rights reserved. While we have no reason to doubt the accuracy of the information provided from sources we deem reliable, we cannot guarantee it and therefore assume no liability for errors, omissions or changes to this content. Sources include CoStar, SitesUSA, ESRI, and Georgia DOT.