

FOR
LEASE



950

TECHNOLOGY WAY

 **STANG**
Real Estate Management.

CBRE

950 TECHNOLOGY WAY LIBERTYVILLE, IL

Pine Meadow Corporate Center II is a 3-story, Class A office building in the North Suburban Chicago office sub-market in central Lake County. This modern office building offers 90,258 rentable square feet and is situated in a campus-like setting with a scenic pond at the south end of the building and the adjacent Pine Meadow Golf Club (annually ranked among the Top 10 public access courses in Illinois) to the east.

With convenient access to I-94, Pine Meadow Corporate Center II is located within 25 miles of Chicago's O'Hare International Airport and 45 miles from The Loop. The building is within close proximity to area hotels, restaurants and health clubs.

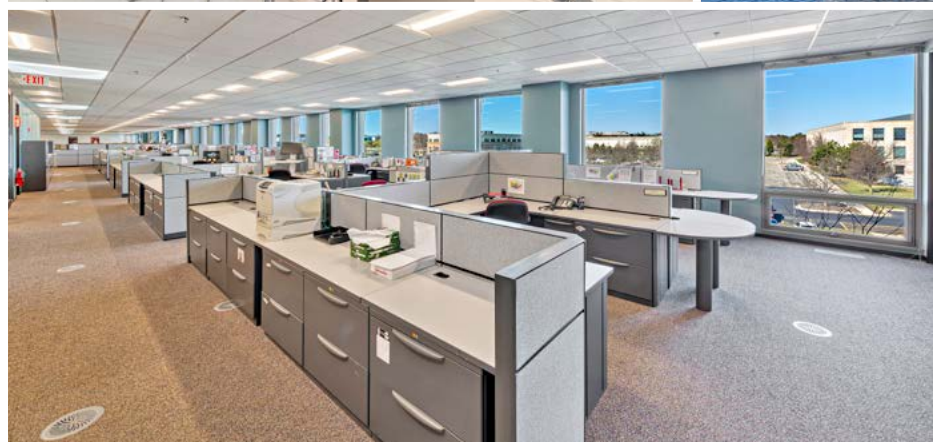


- Located a 5 minute drive to Libertyville's "restaurant row"
- Close proximity to Metra's Milwaukee District/ North Line and the North Central Service stations in Libertyville, Prairie Crossing and Mundelein.
- Optimal configurations for both open office and partitioned office formats
- High image two-story lobby with marble floors
- State-of-the-Art raised floor HVAC system
- Operable windows
- Attractive tenant lounge convertible for meetings/training
- Parking ratio: 4/1,000 sf



UNIQUE RAISED FLOOR DESIGN ALLOWS FOR IMPROVED TENANT HEALTH & WELLNESS

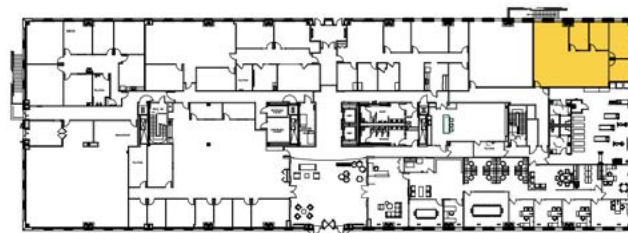
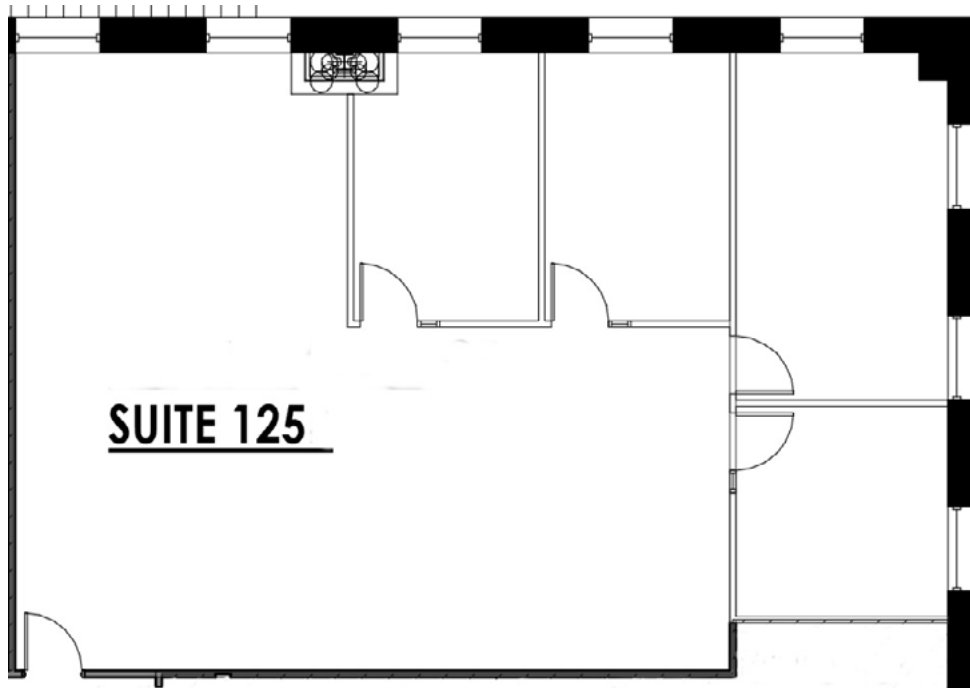
- 11" raised flooring system throughout
- Maximum planning flexibility and reduced employee/FF&E reconfiguration costs
- Underfloor plenum used for cable management (electrical/data/telephone)
- HVAC delivered underfloor to desired locations
- In-floor "swirl" diffusers allow each employee individual temperature control
- Improved indoor air quality compared to overhead air distribution systems
- 100% airflow efficiency
- Unique operable windows



FLOOR PLANS

950

SUITE 125 2,253 SF



THE COMPANY WE KEEP

Map showing the location of 950 Technology Way (highlighted in red) in Lake County, Illinois. The map includes labels for major roads (Peterson Rd, Winchester Rd, Midlothian Rd, Lake St, Motorola Pkwy, Commerce Dr, Harris Rd, Franklin Blvd, Ambria Dr, Salceda Dr, Butterfield Rd) and numbered locations (1-13) corresponding to the list of companies.

- 1. Novartis Gene Therapies
- 2. Medline
- 3. Comcast
- 4. MBX
- 5. Valent Biosciences
- 6. Brightstar
- 7. USG
- 8. Lake County Forest Preserve
- 9. Mobile Therapy Centers of America
- 10. Intermatic
- 11. Volkswagen Credit
- 12. ComEd
- 13. Culligan

Other labels on the map include: Commerce Dr, Harris Rd, Franklin Blvd, Winchester Rd, Midlothian Rd, Ambria Dr, Salceda Dr, Lake St, Motorola Pkwy, Butterfield Rd, and Pine Meadow.

1. Novartis Gene Therapies
2. Medline
3. Comcast
4. MBX
5. Valent Biosciences
6. Brightstar
7. USG
8. Lake County Forest Preserve
9. Mobile Therapy Centers of America
10. Intermatic
11. Volkswagen Credit
12. ComEd
13. Culligan

950

TECHNOLOGY WAY

VIEW FLOOR PLANS



TAKE VIRTUAL TOUR



CBRE

FOR MORE INFORMATION, CONTACT:

DAN GRAHAM
+1 847 706 4032
DAN.GRAHAM@CBRE.COM

ROB GRAHAM
+1 847 706 4034
ROB.GRAHAM@CBRE.COM

©2024 CBRE, Inc. All rights reserved. This information has been obtained from sources believed reliable, but has not been verified for accuracy or completeness. You should conduct a careful, independent investigation of the property and verify all information. Any reliance on this information is solely at your own risk. CBRE and the CBRE logo are service marks of CBRE, Inc. All other marks displayed on this document are the property of their respective owners, and the use of such logos does not imply any affiliation with or endorsement of CBRE. Photos herein are the property of their respective owners. Use of these images without the express written consent of the owner is prohibited. PMStudio_April2021