



TURN-KEY CAR WASH FOR SALE

16815 Stony Plain Road

Edmonton, Alberta

Property Features

- 7,500 sq.ft.± car wash for sale
- Direct exposure to Stony Plain Road
- Exposure to over 42,000 vehicles per day (2014 - City of Edmonton, Stony Plain Road West of 167 Street & 170 Street North of Stony Plain Road)
- Directly across the street from Mayfield Common

Julie Lam

780 436 7412 • jlam@naiedmonton.com

CLOSE PROXIMITY TO



< 1 Min

MAYFIELD COMMON

4 Mins

TERRA LOSA SHOPPING CENTRE

6 Mins

WEST EDMONTON MALL

FOR SALE ➔

FOR SALE

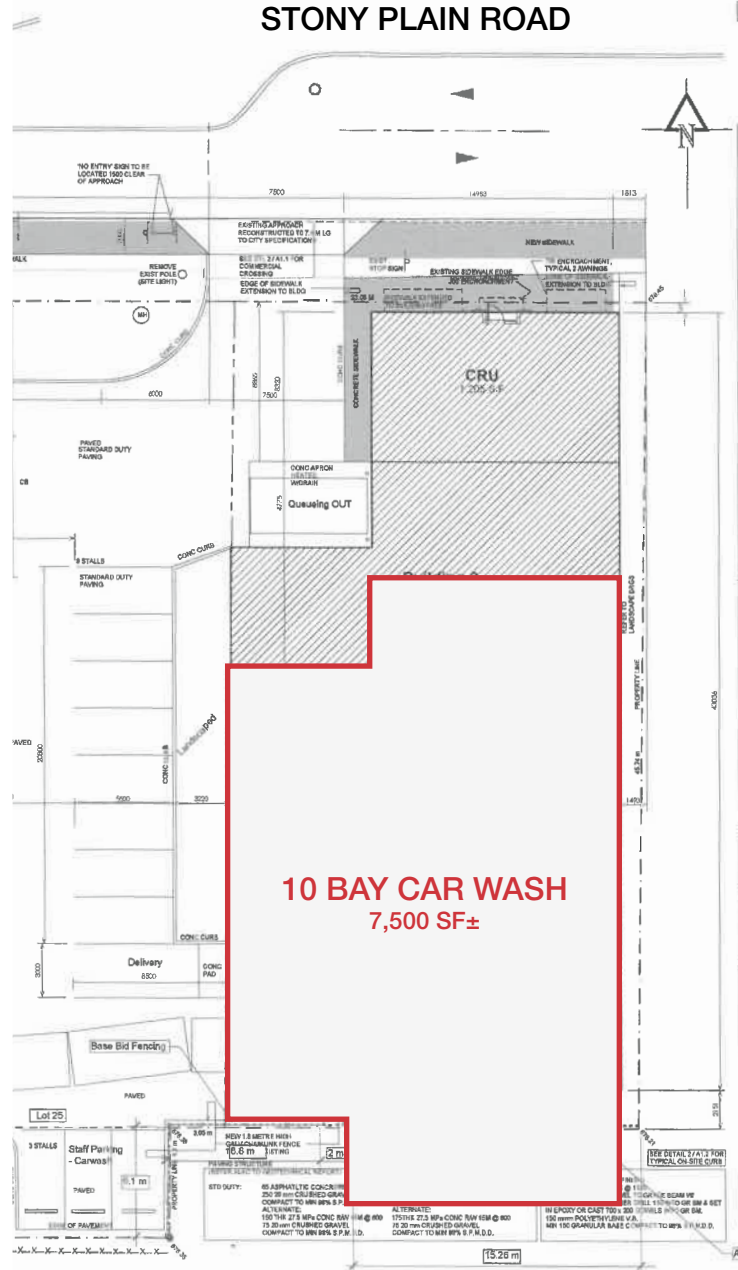
TURN-KEY CAR WASH

SIZE 7,500 sq.ft.

PRICE Market

FINANCIALS Income and expense information is available to qualified buyers, contact the agent for details.

16815 Stony Plain Road, Edmonton AB



Julie Lam

780 436 7412 • jlam@naiedmonton.com

16815 Stony Plain Road, Edmonton AB



WEST EDMONTON MALL

"The largest shopping mall in North America, with over 800 stores and services including nine attractions, two hotels and over 100 dining venues in the complex, and parking for more than 20,000 vehicles. More than 24,000 people are employed at the property. The mall receives about 32 million visitors per year; it attracts between 90,000 and 200,000 shoppers daily, depending on the day and season."

WEST EDMONTON MALL



TERRA LOSA SHOPPING CENTRE

"Located in the hub of Edmonton's west side retail area are 40 shops and services serving a diversity of needs."

TERRA LOSA
SHOPPING CENTRE



MAYFIELD COMMON
SHOPPING CENTRE



MAYFIELD COMMON SHOPPING CENTRE

"This grocery anchored centre offers convenient access to 56 units totalling 429,682 sq. ft featuring major retailers such as Save-On-Foods, HomeSense, Winners, Dollarama as well as restaurants such as Joey's, Boston Pizza and A&W."

STONY PLAIN ROAD

MAYFIELD ROAD

170 STREET