

# Available Now



## Trailer Yard Near Port Terminals Available For Lease

502 Telfair Road, Garden City, GA 31415

- ±2 Useable Acres
- Rocked yard
- Fully fenced
- Electric gate with keypad entry
- Existing single wide office trailer
- Covered storage maintenance shop
- ±2.7 Miles to GPA's Ocean Terminal
- ±3.4 Miles to GPA's Garden City Terminal

Lease Rate:

Please Inquire

**Sebastian Findlay, SIOR**

Principal

Office +1 912 483 6160

Cell +1 646 287 3849

sebastian.findlay@colliers.com



**Colliers | Savannah**

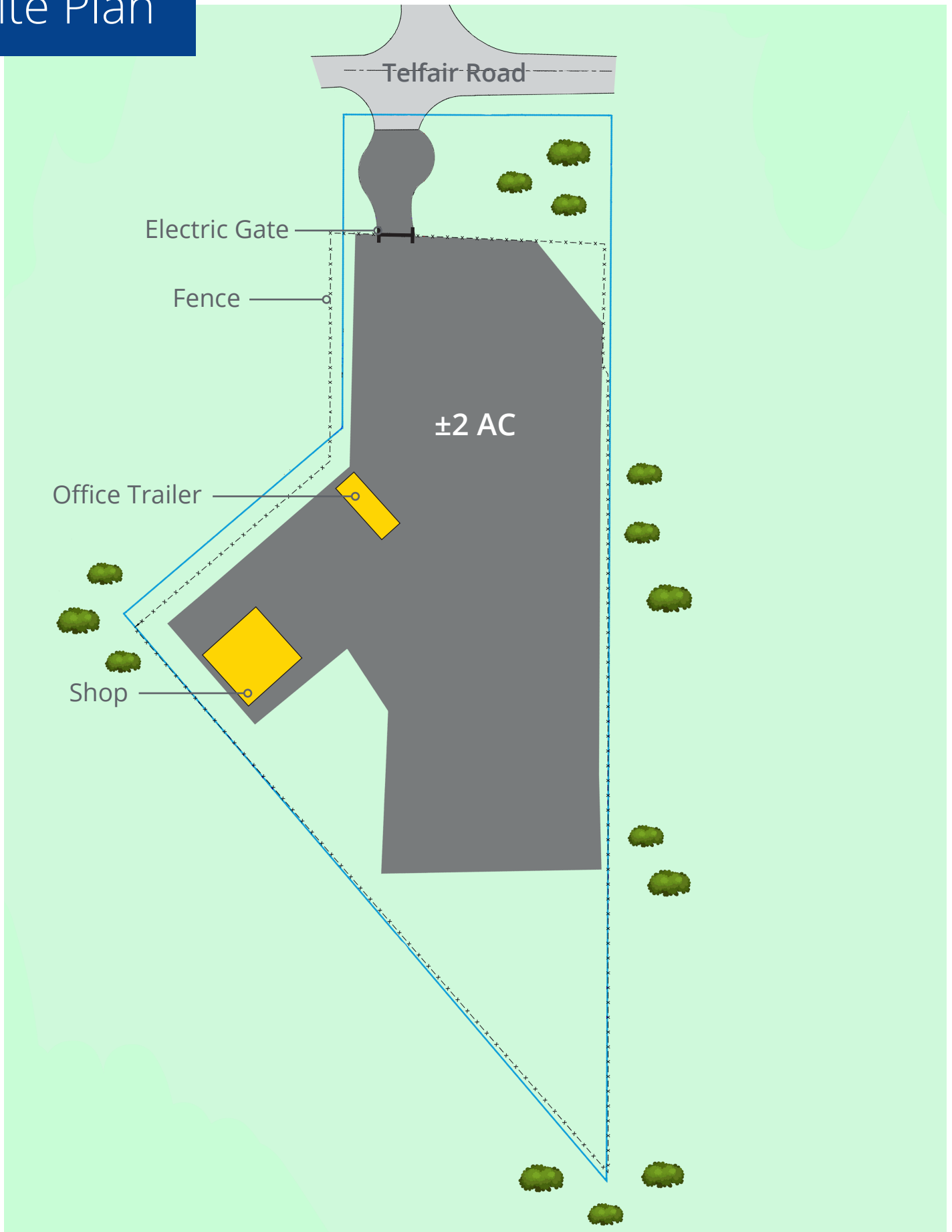
545 E York Street

Savannah, GA 31401

Main: +1 912 233 7111

colliers.com/savannah

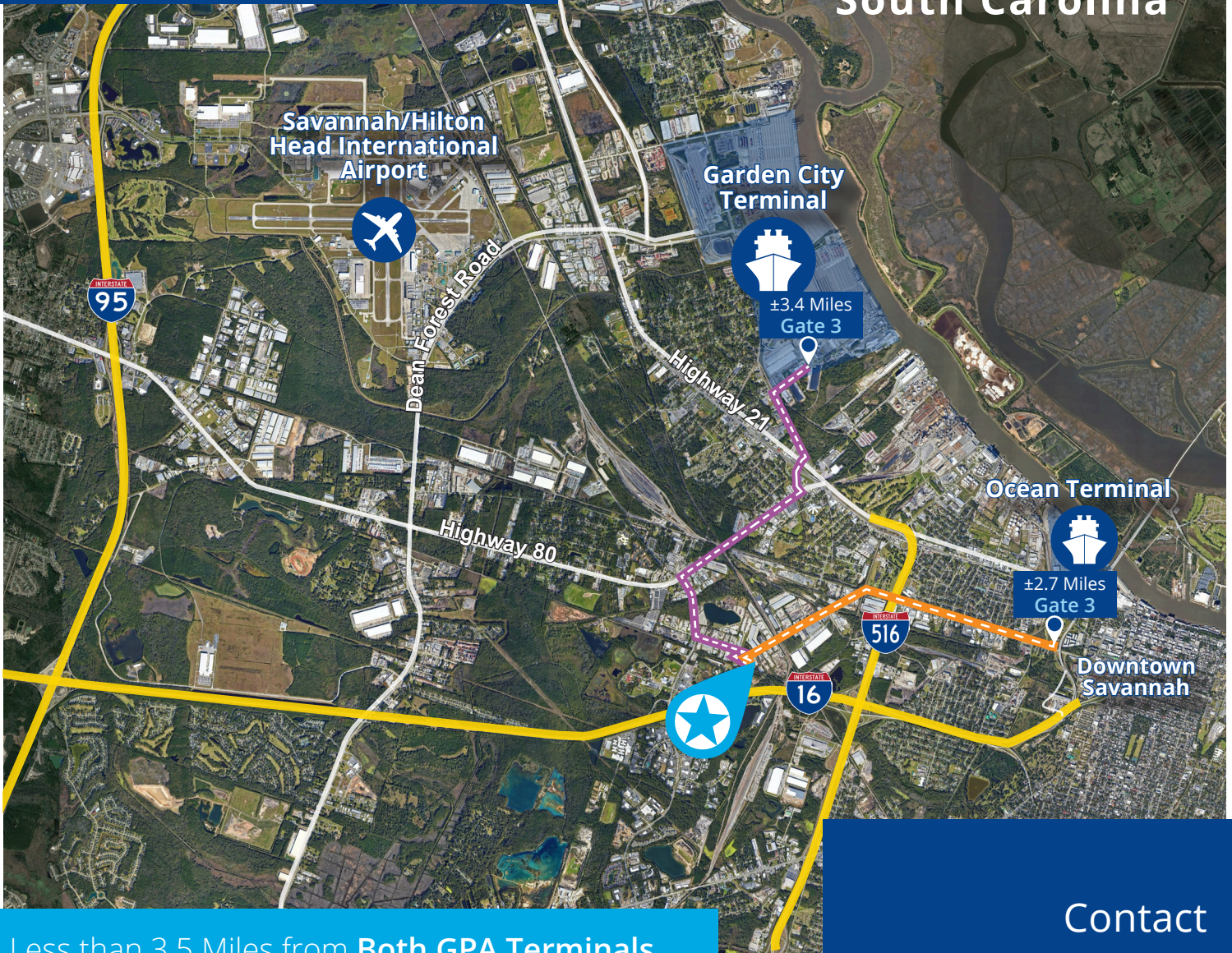
# Site Plan





# Property Location

South Carolina



Less than 3.5 Miles from **Both GPA Terminals**

## Distances

Interstate 516	1.3 Miles
Interstate 16	1.4 Miles
Ocean Terminal	2.7 Miles
Garden City Terminal	3.4 Miles
Interstate 95	6.1 Miles
Savannah/HH Airport	9.3 Miles

## Contact

**Sebastian Findlay, SIOR**

Principal

Office +1 912 483 6160

Cell +1 646 287 3849

sebastian.findlay@colliers.com



**Colliers | Savannah**

545 E York Street

Savannah, GA 31401

Main: +1 912 233 7111

colliers.com/savannah

This document has been prepared by Colliers International for advertising and general information only. Colliers International makes no guarantees, representations or warranties of any kind, expressed or implied, regarding the information including, but not limited to, warranties of content, accuracy and reliability. Any interested party should undertake their own inquiries as to the accuracy of the information. Colliers International excludes unequivocally all inferred or implied terms, conditions and warranties arising out of this document and excludes all liability for loss and damages arising therefrom. This publication is the copyrighted property of Colliers International and/or its licensor(s). ©2024. All rights reserved.