



RANGE  
COMMERCIAL PARTNERS

# FOR LEASE - VISTAS I

## 5540 Falmouth Street, Richmond, VA 23230

36,443 SF Class A Suburban  
Office Building Located in the  
Brookfield/Glen Forest Area

- Immediate access to Interstate-64, major hotels, and retail amenities
- Excellent glass line
- 4/1,000 SF parking ratio
- Close Proximity to HCA Henrico Doctor's Hospital & Bon Secours St. Mary's Hospital

### AVAILABLE SUITES

---

Suite 104	1,745 SF
-----------	----------

---

Suite 302*	2,493 SF (Lobby Facing Entrance)
------------	-------------------------------------

---

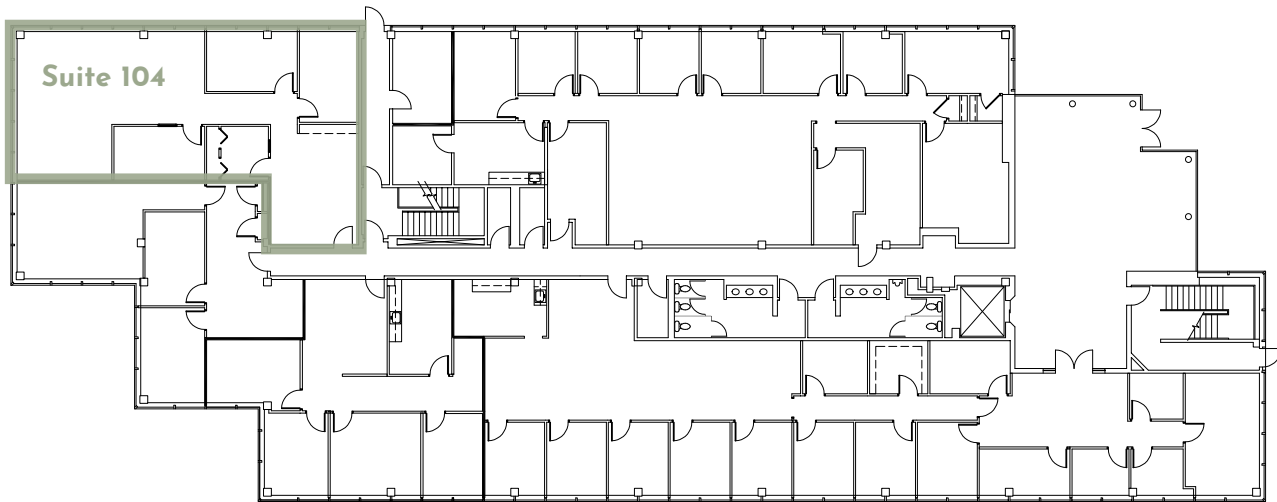
Suite 304*	4,244 SF
------------	----------

---

\*Suites 302 & 304 can be combined for a total of 6,737 SF

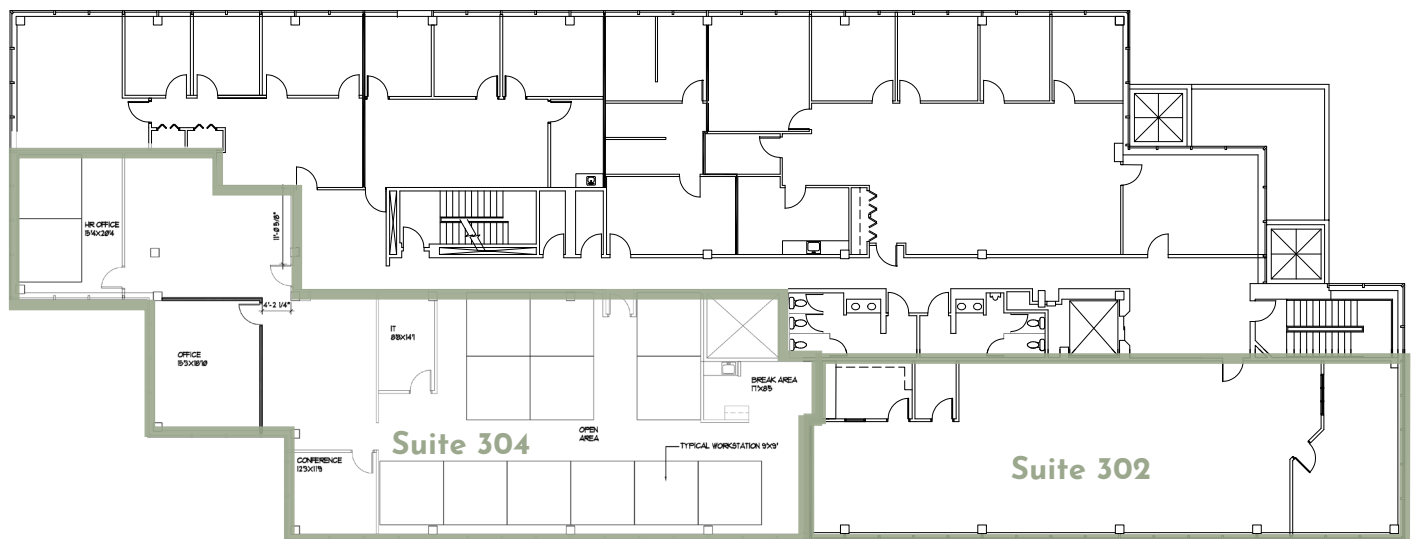
# FIRST FLOOR SUITES

Suite 104 - 1,745 SF



# THIRD FLOOR SUITES

Suite 302 - 2,493 SF | Suite 304 - 4,244 SF | 302 & 304 Combined - 6,737 SF



## CONTACT US

**David Wilkins, SIOR**  
 Executive Managing Director  
[dwilkins@rangecommercial.com](mailto:dwilkins@rangecommercial.com)  
 804.873.2569

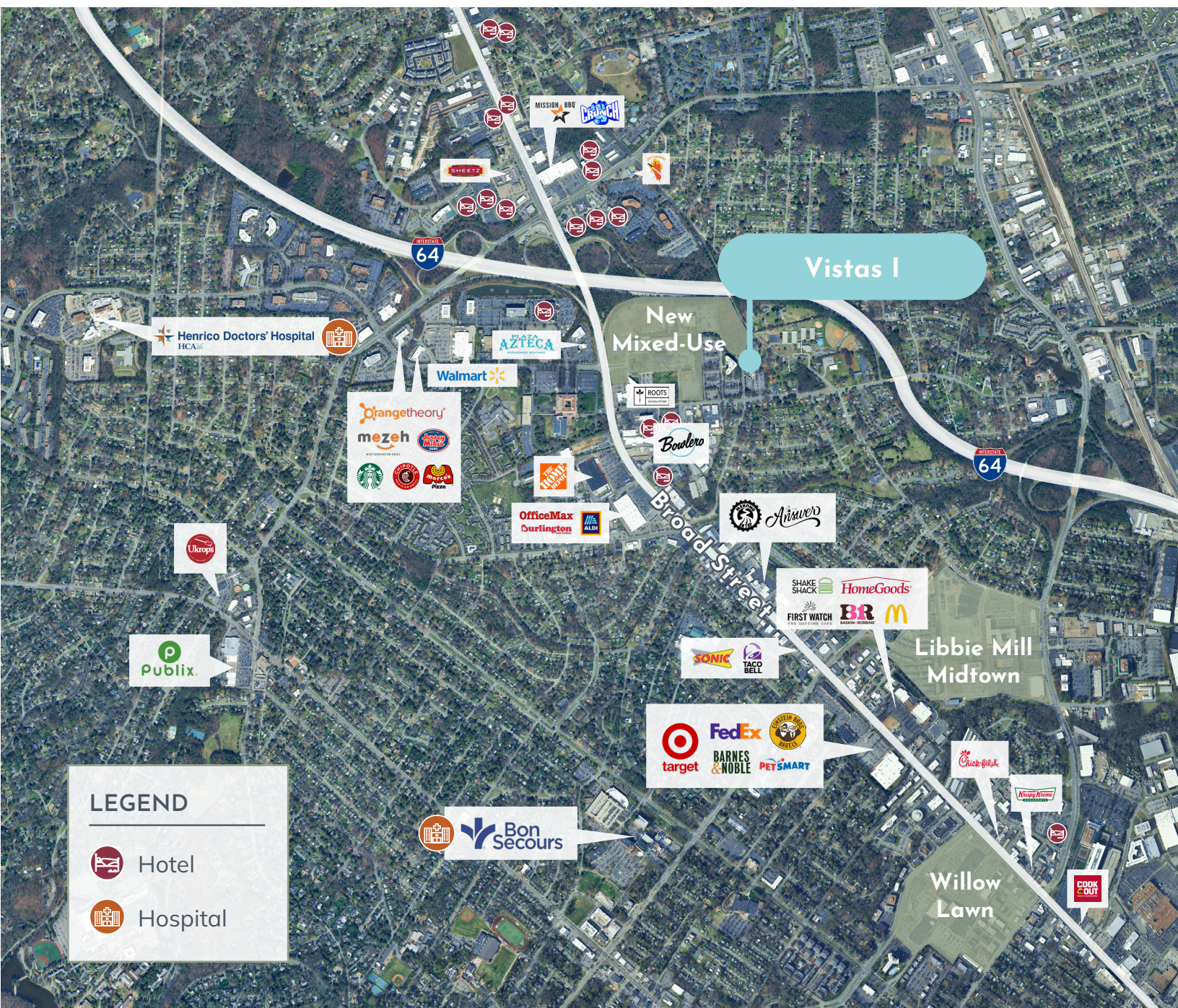
**Rebecca Barricklow**  
 Senior Vice President  
[rbarricklow@rangecommercial.com](mailto:rbarricklow@rangecommercial.com)  
 804.399.4762





# IMMEDIATE ACCESS

TO I-64, RESTAURANTS, HOTELS, HOSPITALS, AND MORE



## CONTACT US

David Wilkins, SIOR  
Executive Managing Director  
dwilkins@rangecommercial.com  
804.873.2569

Rebecca Barricklow  
Senior Vice President  
rbarricklow@rangecommercial.com  
804.399.4762





# AMENITY-RICH LOCATION

## Richmond's Newest Signature Mixed-Use Development

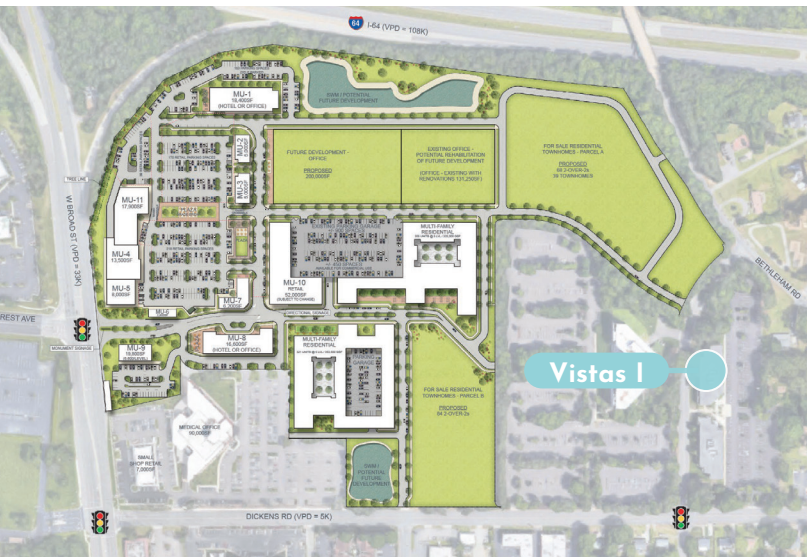


2 Min

46-ACRE MIXED-USE SITE SOON TO BE BUILT NEXT TO THE PROPERTY

- 83,000 SF of Retail and Grocery
- 52,000 SF of Entertainment and Fitness
- 1,000+ Multifamily Units
- Flagship hotel space
- Structured & Surface Parking Areas

**SITE WORK  
BEGINS**  
Q4 2025



4 Min



### Libbie Mill Midtown

90-ACRE MIXED-USE SITE HOME TO TOWNHOMES, CONDOS, APARTMENT UNITS AND RETAIL SPACE



7 Min

### The Shops At Willow Lawn

22 RETAILERS | 14 RESTAURANTS | 11 SERVICES



## CONTACT US

David Wilkins, SIOR  
Executive Managing Director  
dwilkins@rangecommercial.com  
804.873.2569

Rebecca Barricklow  
Senior Vice President  
rbarricklow@rangecommercial.com  
804.399.4762

