

INDUSTRIAL PROPERTY FOR LEASE

New 54,600 SF Industrial Facility near I-95

2057 Weeks Road, Fayetteville, NC 28312



for more information

PATRICK MURRAY, CCIM, SIOR

Principal / Broker in Charge
O: 910.829.1617
C: 910.861.0449
patrick@grantmurrayre.com

NEIL GRANT

Principal / Broker
O: 910.829.1617 x206
C: 910.818.3252
neil@grantmurrayre.com

ROGER MARX, CCIM

Broker
O: 910.829.1617
C: 910.222.3832
roger.marx@grantmurrayre.com



Grant - Murray
REAL ESTATE, LLC
COMMERCIAL AND INVESTMENT BROKERAGE

150 N. McPherson Church Rd | Fayetteville, NC 28303 | www.grantmurrayre.com



PROPERTY OVERVIEW

Available Space:	54,600 SF
Lease Rate:	\$6.95 SF/yr (NNN)
Lot Size:	4.6 Acres
Year Built:	2025
Zoning:	HI
Clear Height:	36' Center, 32' Eaves
Columns:	52' x 52'
Dock High Doors:	(2) 9'x12'
Drive In Doors:	(1) 12'x14'
Floor Thickness:	6" Concrete
Delivery Condition:	Shell Condition

property description

2057 Weeks Road offers a newly constructed ±54,600 SF industrial warehouse facility within the Fayetteville Business Park, designed to accommodate manufacturing, distribution, logistics, and heavy industrial users. Situated on approximately 4.6 acres and zoned HI, the shell building features a highly functional 260' x 210' footprint with 52' x 52' column spacing, 36' clear height at center and 32' clear at the eaves, providing efficient vertical storage and operational flexibility. The facility includes two 9' x 10' dock-high doors, one 12' x 14' drive-in door, a durable 6" concrete floor slab, standing seam metal roof system, and expandable truck court configuration tailored to tenant requirements. Delivered in shell condition, the property allows users to customize HVAC, lighting, sprinklers, and interior improvements to suit specialized operational needs.



for more information

PATRICK MURRAY, CCIM, SIOR

Principal / Broker in Charge
O: 910.829.1617
C: 910.861.0449
patrick@grantmurrayre.com

NEIL GRANT

Principal / Broker
O: 910.829.1617 x206
C: 910.818.3252
neil@grantmurrayre.com

ROGER MARX, CCIM

Broker
O: 910.829.1617
C: 910.222.3832
roger.marx@grantmurrayre.com



Grant - Murray
REAL ESTATE, LLC
COMMERCIAL AND INVESTMENT BROKERAGE

150 N. McPherson Church Rd | Fayetteville, NC 28303 | www.grantmurrayre.com



for more information

PATRICK MURRAY, CCIM, SIOR

Principal / Broker in Charge
O: 910.829.1617
C: 910.861.0449
patrick@grantmurrayre.com

NEIL GRANT

Principal / Broker
O: 910.829.1617 x206
C: 910.818.3252
neil@grantmurrayre.com

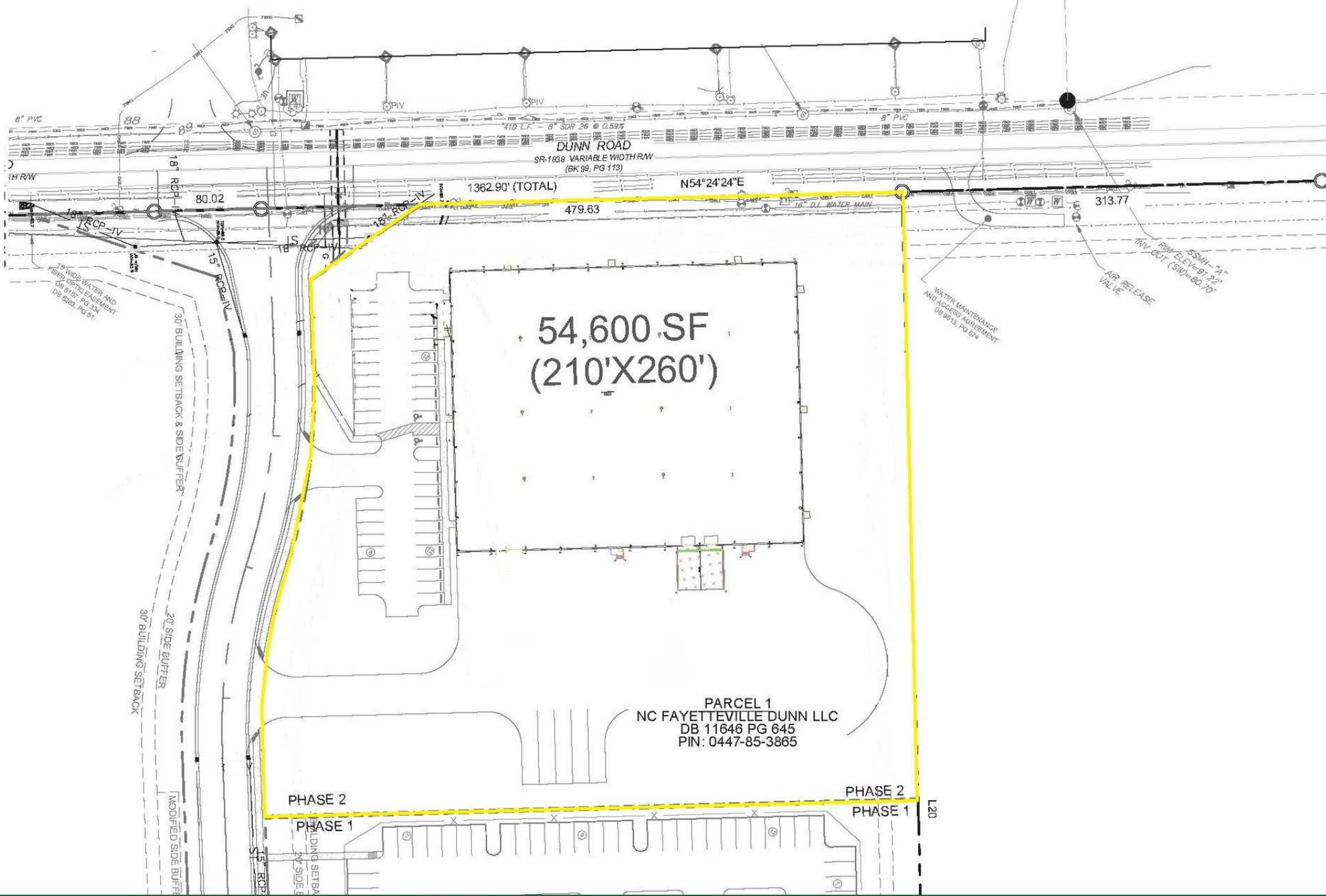
ROGER MARX, CCIM

Broker
O: 910.829.1617
C: 910.222.3832
roger.marx@grantmurrayre.com



Grant - Murray
REAL ESTATE, LLC
COMMERCIAL AND INVESTMENT BROKERAGE

150 N. McPherson Church Rd | Fayetteville, NC 28303 | www.grantmurrayre.com



54,600 SF
(210'X260')

PARCEL 1
NC FAYETTEVILLE DUNN LLC
DB 11646 PG 645
PIN: 0447-85-3865

PHASE 2

PHASE 2

PHASE 1

PHASE 1

for more information

PATRICK MURRAY, CCIM, SIOR
Principal / Broker in Charge
O: 910.829.1617
C: 910.861.0449
patrick@grantmurrayre.com

NEIL GRANT
Principal / Broker
O: 910.829.1617 x206
C: 910.818.3252
neil@grantmurrayre.com

ROGER MARX, CCIM
Broker
O: 910.829.1617
C: 910.222.3832
roger.marx@grantmurrayre.com



Grant - Murray
REAL ESTATE, LLC
COMMERCIAL AND INVESTMENT BROKERAGE



NC FAYETTEVILLE DUNN
 PARCEL 1 SHELL BUILDING

REACTYLINK

FAYETTEVILLE
 NORTH CAROLINA

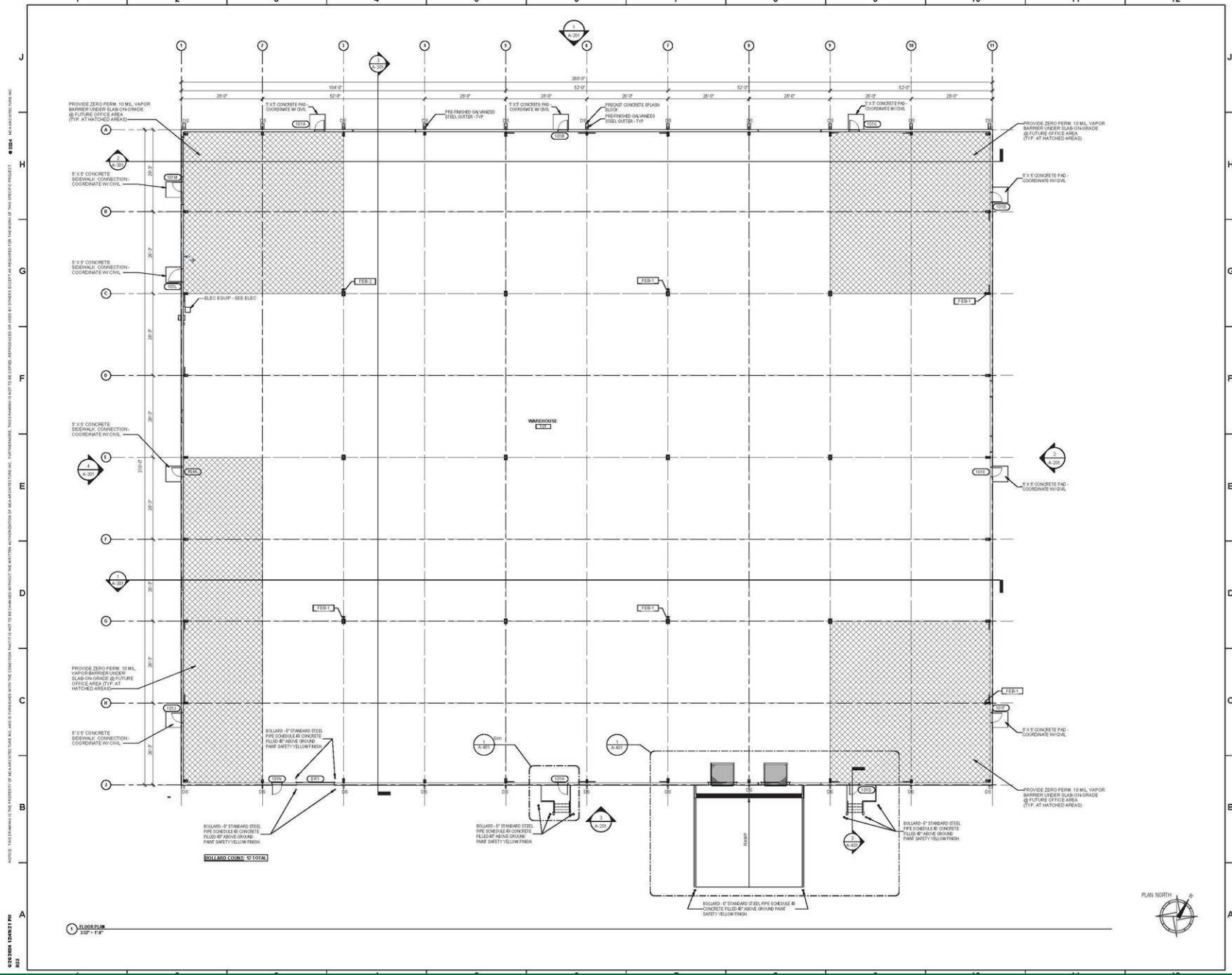
Revision Table

NO.	REVISION DESCRIPTION	DATE
A	ISSUED FOR STAKEHOLDER SIGN OFF	08 JUN 23
B	ISSUED FOR PERMITTING	25 JUL 23
C	ISSUED FOR PERMITTING REVISIONS	03 SEP 23
D	ISSUED FOR PERMITTING REVISIONS	12 OCT 23
E	SHELL LABELLED FOR OWNER REVIEW	26 JAN 24
F	SHELL LABELLED FOR PERMITTING	05 MAR 24
G	SHELL LABELLED FOR CONSTRUCTION	25 JUN 24

PROJECT NO: A22015.0
 DRAWN BY: JSN
 CHECKED BY: JJK
 SCALE: 3/32" = 1'-0"

FLOOR PLAN

A-101



NOTES: THIS DRAWING IS THE PROPERTY OF MCA ARCHITECTURE INC. AND IS PROVIDED WITH THE CONDITION THAT IT IS TO BE USED WITHOUT THE WRITTEN AUTHORIZATION OF MCA ARCHITECTURE INC. FURTHERMORE, THIS DRAWING IS NOT TO BE REPRODUCED OR USED BY OTHERS EXCEPT AS PROVIDED FOR THE PURPOSE OF THIS SPECIFIC PROJECT.

for more information

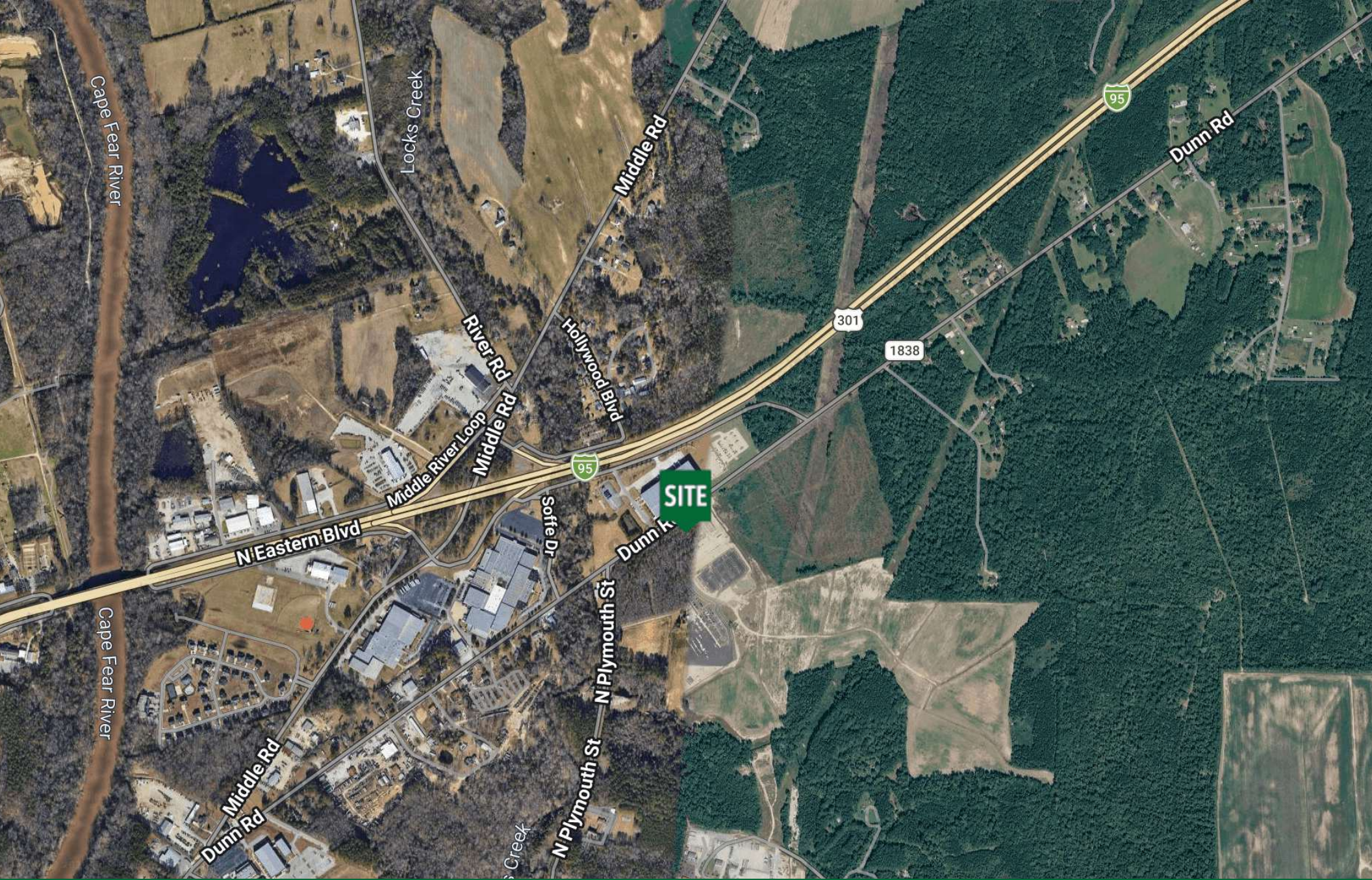
PATRICK MURRAY, CCIM, SIOR
 Principal / Broker in Charge
 O: 910.829.1617
 C: 910.861.0449
 patrick@grantmurrayre.com

NEIL GRANT
 Principal / Broker
 O: 910.829.1617 x206
 C: 910.818.3252
 neil@grantmurrayre.com

ROGER MARX, CCIM
 Broker
 O: 910.829.1617
 C: 910.222.3832
 roger.marx@grantmurrayre.com



Grant - Murray
 REAL ESTATE, LLC
 COMMERCIAL AND INVESTMENT BROKERAGE



for more information

PATRICK MURRAY, CCIM, SIOR
Principal / Broker in Charge
O: 910.829.1617
C: 910.861.0449
patrick@grantmurrayre.com

NEIL GRANT
Principal / Broker
O: 910.829.1617 x206
C: 910.818.3252
neil@grantmurrayre.com

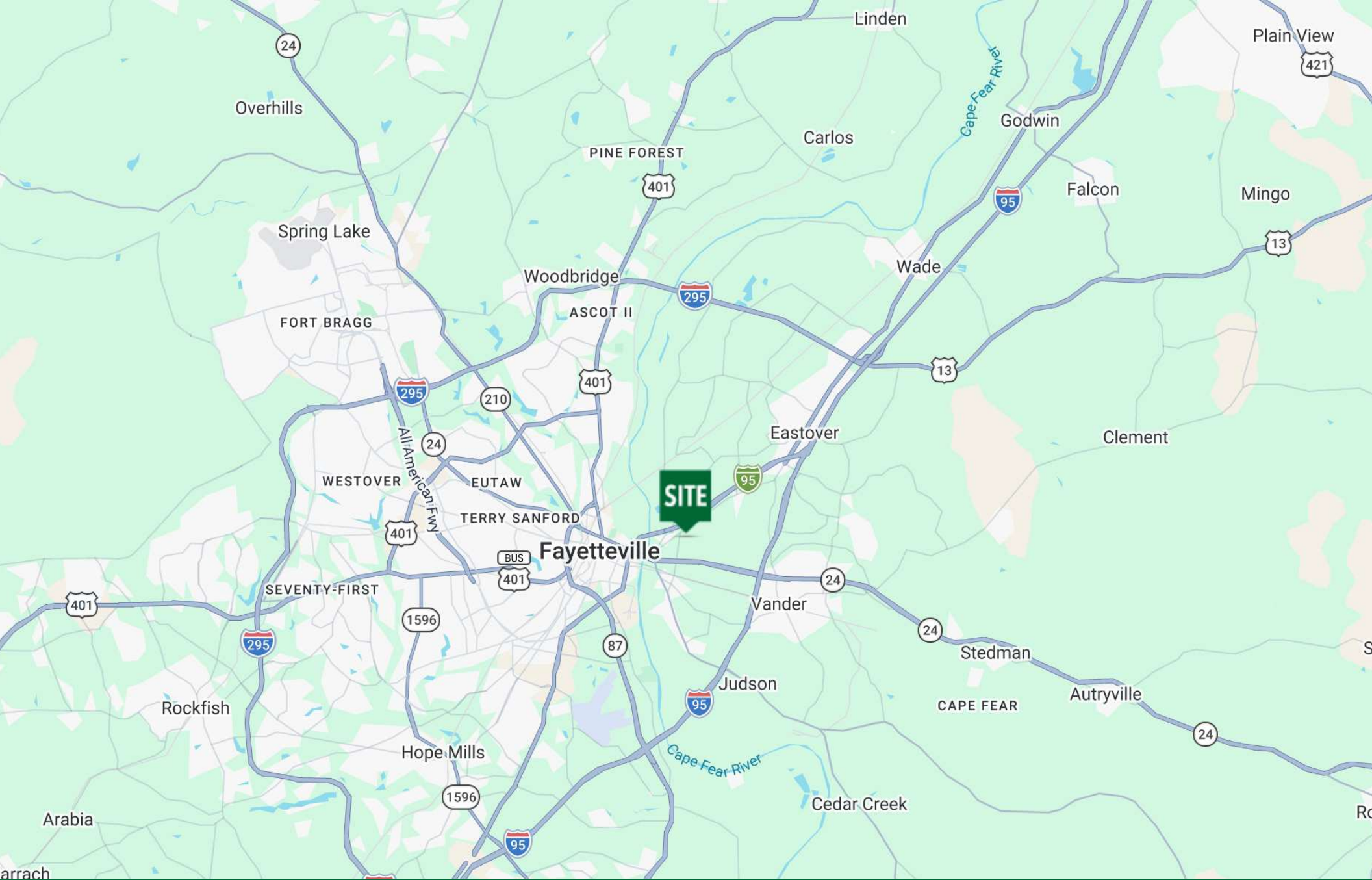
ROGER MARX, CCIM
Broker
O: 910.829.1617
C: 910.222.3832
roger.marx@grantmurrayre.com



Grant - Murray
REAL ESTATE, LLC
COMMERCIAL AND INVESTMENT BROKERAGE

150 N. McPherson Church Rd | Fayetteville, NC 28303 | www.grantmurrayre.com

Maxar Technologies



for more information

PATRICK MURRAY, CCIM, SIOR

Principal / Broker in Charge
O: 910.829.1617
C: 910.861.0449
patrick@grantmurrayre.com

Lum
Bridge

NEIL GRANT

Principal / Broker
O: 910.829.1617 x206
C: 910.818.3252
neil@grantmurrayre.com

ROGER MARX, CCIM

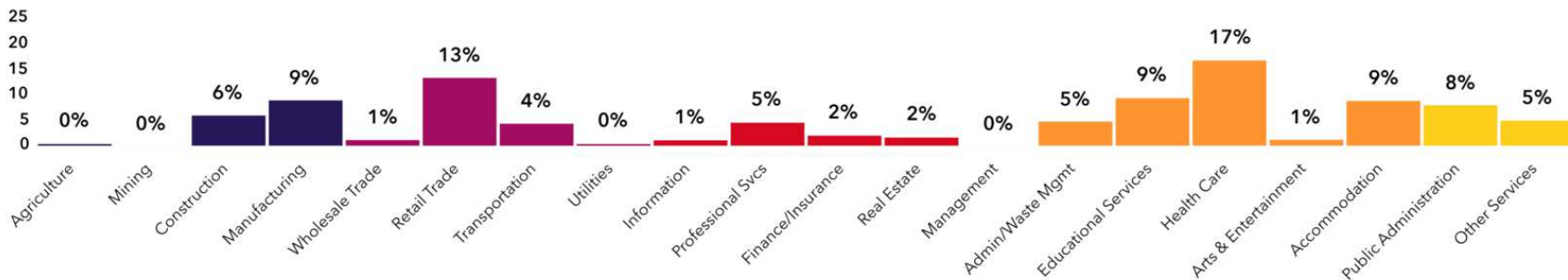
Broker
O: 910.829.1617
C: 910.222.3832
roger.marx@grantmurrayre.com



Grant - Murray
REAL ESTATE, LLC
COMMERCIAL AND INVESTMENT BROKERAGE

150 N. McPherson Church Rd | Fayetteville, NC 28303 | www.grantmurrayre.com

Map
data
Google



230,438
Total Population

Population

289,742
Daytime Population

\$61,192
Median HH Income

Income

\$34,441
Per Capita Income

94,909
Total Households

Housing

104,543
Total Housing Units

\$228,751
Median Home Value

Homes

51.8%
Home Ownership

35.6
Median Age

People

Tapestry Segment

Demographics

2057 Weeks Road, Fayetteville, North Carolina, 28312



7%

No HS Diploma



27%

HS Graduate



36%

Some College



29%

Degree or Higher

Source: U.S. Census Bureau, Census 2010 Summary File 1. Esri forecasts for 2025 and 2028

Source: This infographic contains data provided by Esri-Data Axle (2025), Esri (2025).

for more information

PATRICK MURRAY, CCIM, SIOR
Principal / Broker in Charge
O: 910.829.1617
C: 910.861.0449
patrick@grantmurrayre.com

NEIL GRANT
Principal / Broker
O: 910.829.1617 x206
C: 910.818.3252
neil@grantmurrayre.com

ROGER MARX, CCIM
Broker
O: 910.829.1617
C: 910.222.3832
roger.marx@grantmurrayre.com



Grant - Murray
REAL ESTATE, LLC
COMMERCIAL AND INVESTMENT BROKERAGE

150 N. McPherson Church Rd | Fayetteville, NC 28303 | www.grantmurrayre.com