



Avison Young - Raleigh-Durham | 5440 Wade Park Boulevard, Suite 200 | Raleigh, NC 27607

COWORKING SPACE FOR LEASE

911 Paverstone Drive
Raleigh, NC 27615

**AVISON
YOUNG**

Property highlights

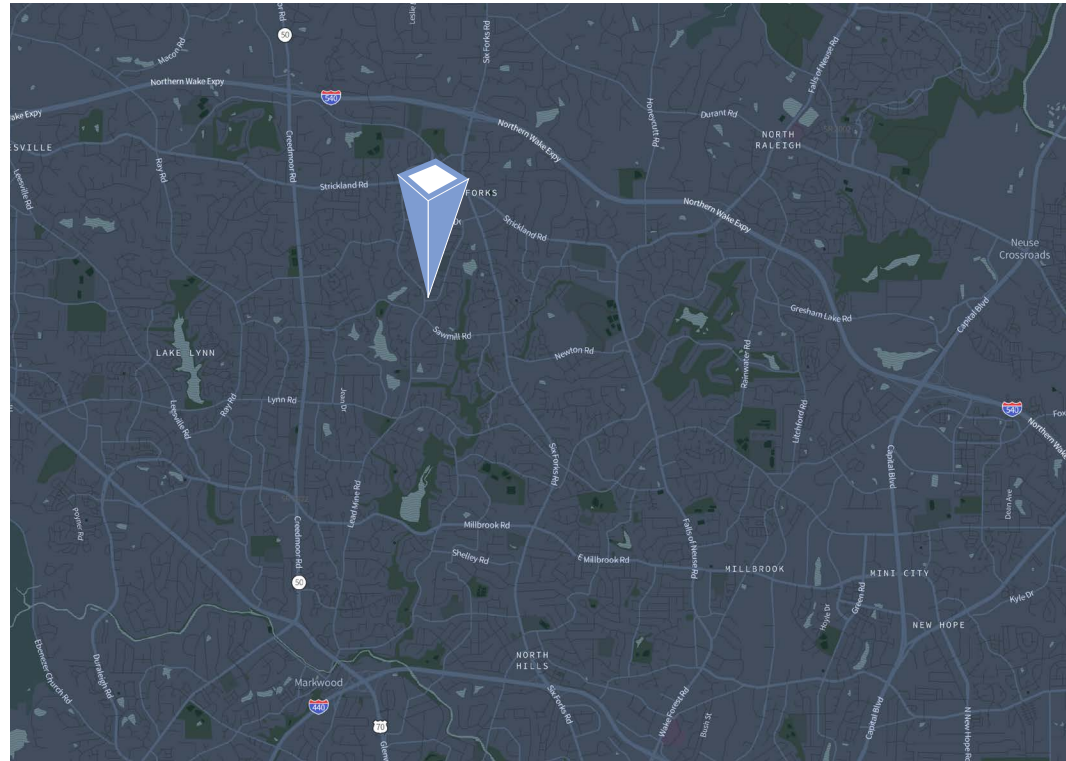
Coworking space available now for lease

- All utilities included
- Wi-Fi included
- Ample amount of parking
- Neighborhood setting
- Common areas include: two conference rooms (available by reservation), large break area with gourmet kitchen, reception, and open work area with tables and chairs
- Convenient location, across the street from Greystone Village Shopping Center with dining, coffee, etc.

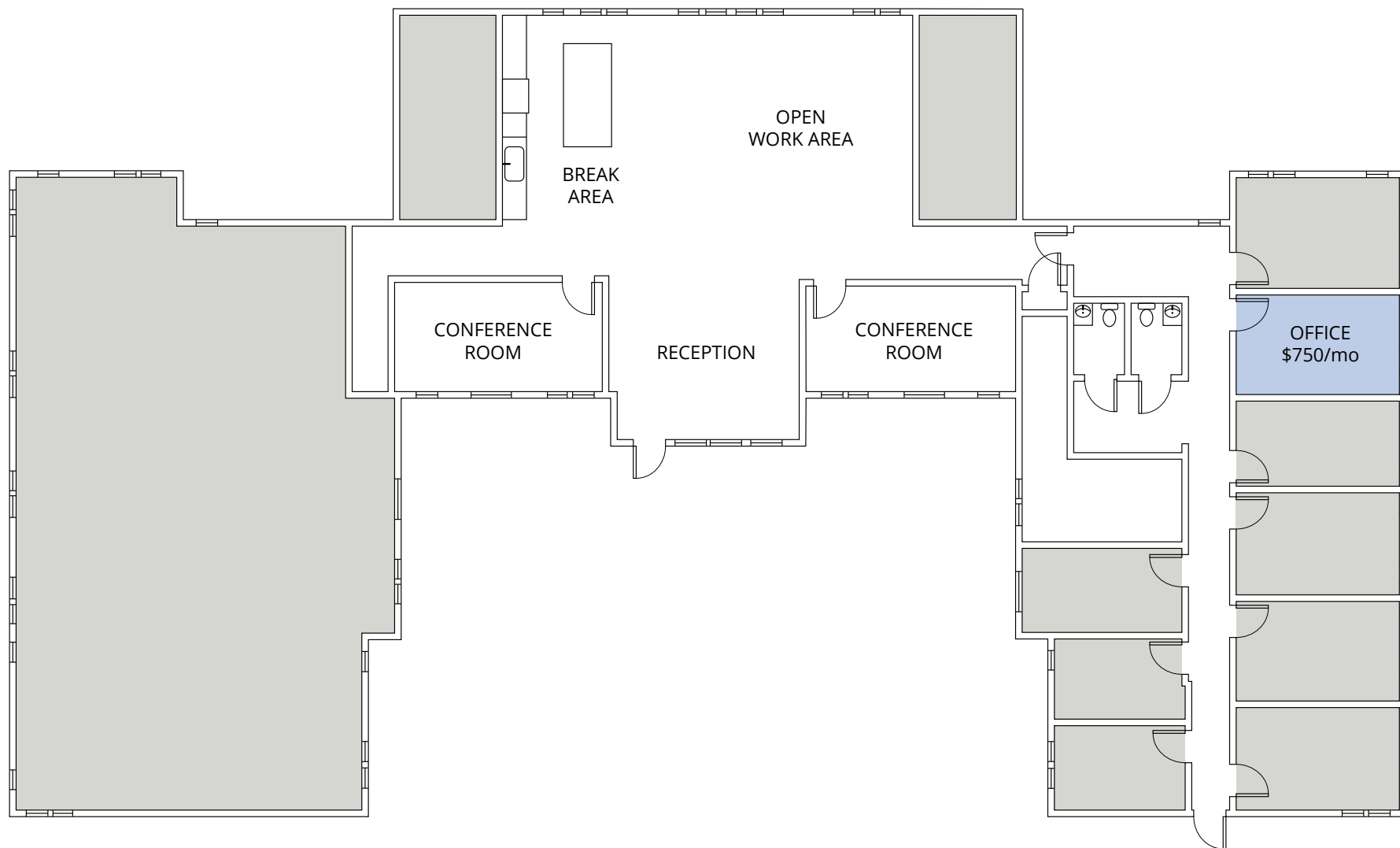
Offering Summary

Lease Rate: \$750/month

Available SF: ~127 sf



Floor plan





Reception



Conference room

Common areas



Break area



Open work area

Demographics

180,670

Total population
within a five-mile
radius

15,145

Total businesses
within a five-mile
radius

114,530

Total employees
within a five-mile
radius

92,885

Households
within a five-mile
radius

\$154,318

Avg. hh income
within a five-mile
radius

\$524,887

Avg. house value
within a five-mile
radius

Let's talk.

Ashley Carrabba

Senior Associate

D 919 420 1552

M 919 606 3239

ashley.carrabba@avisonyoung.com

Avison Young - Raleigh-Durham
5440 Wade Park Boulevard, Suite 200 | Raleigh, NC 27607

© 2025. Avison Young - Raleigh-Durham. Information contained herein was obtained from sources deemed reliable and, while thought to be correct, have not been verified. Avison Young - Raleigh-Durham does not guarantee the accuracy or completeness of the information presented, nor assumes any responsibility or liability for any errors or omissions therein.

**AVISON
YOUNG**
