

**FOR LEASE: OUTPATIENT MEDICAL SPACE**



## **Good Samaritan Medical Building**

**4,024 RSF Available**

**3219 Central Ave, Kearney, NE 68847**

Proudly owned by

**Healthpeak®** | **DOC  
LISTED  
NYSE**

**LIBBY LANGENDERFER, DIRECTOR - LEASING**  
**414.367.5534 | [LLangenderfer@healthpeak.com](mailto:LLangenderfer@healthpeak.com)**



# NORTHWEST MEDICAL PLAZA

3219 Central Ave, Kearney, NE 68847



---

#### CAMPUS SETTING

On-Campus  
CHI Good Samaritan

---

#### BUILDING DETAILS

+/- 112,000 RSF  
Three stories

---

#### AVAILABLE

Suite 111: 4,024 RSF

---

#### ACCESS

Convenient access to US 30 via 2nd Ave

---

## PROPERTY OVERVIEW

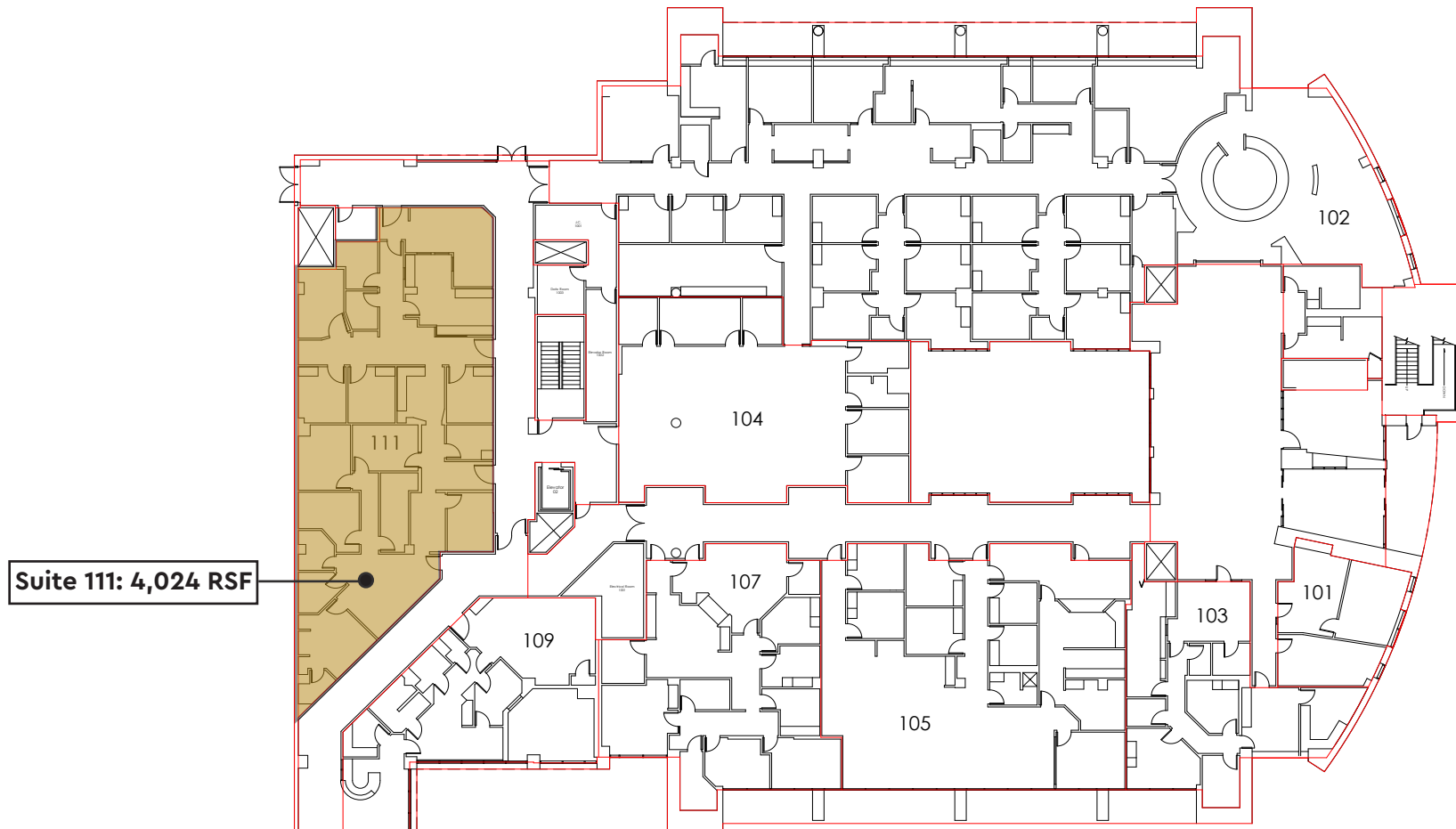
Good Samaritan Medical Office Building was built in 1999 and is located on the CHI Good Samaritan Campus. The CHI Good Samaritan Hospital is a full service acute care hospital located in Kearney and is the main hub for medical services in Central Nebraska. This outpatient medical building is directly connected to the hospital. Professional property management services by the owner.

Proudly owned by

Healthpeak® | DOC  
LISTED  
NYSE

LIBBY LANGENDERFER, DIRECTOR - LEASING  
414.367.5534 | [LLangenderfer@healthpeak.com](mailto:LLangenderfer@healthpeak.com)

## FIRST FLOOR



Proudly owned by

Healthpeak® | **DOC**  
LISTED  
NYSE

LIBBY LANGENDERFER, DIRECTOR - LEASING  
414.367.5534 | [LLangenderfer@healthpeak.com](mailto:LLangenderfer@healthpeak.com)





Healthpeak<sup>®</sup> | **DOC**  
LISTED  
NYSE

LIBBY LANGENDERFER  
Direct 414.367.5534  
[LLangenderfer@healthpeak.com](mailto:LLangenderfer@healthpeak.com)