



WHERE PEOPLE & TEAMS THRIVE

Expansive Workspace Shockoe Slip

11 S. 12th St., Richmond, VA

Ideally situated at the confluence of the historic Shockoe Slip neighborhood and the financial district, Expansive Workspace Shockoe Slip provides pedestrian access to the best professional life, restaurants, and nightlife that downtown Richmond has to offer. Built in 1905, this elegant red-brick building features five floors of private offices and office suites, as well as bike storage and on-site parking.

Shared Amenities

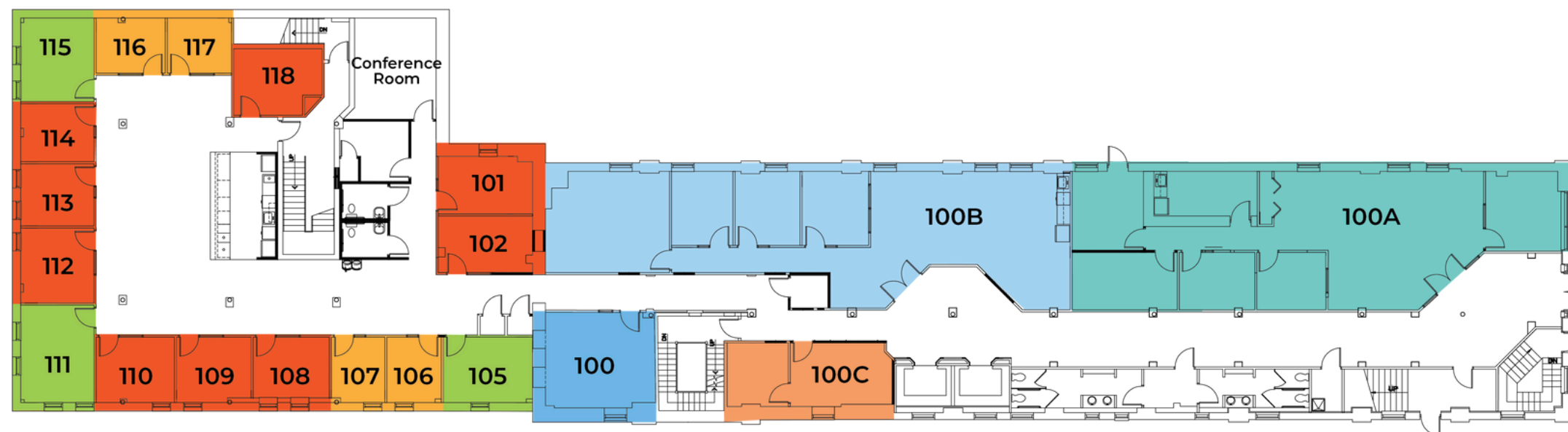
- 3** Meeting Rooms
- 1** Event Venues
- 5** Phone Booths
- 1** Expansive Lounge



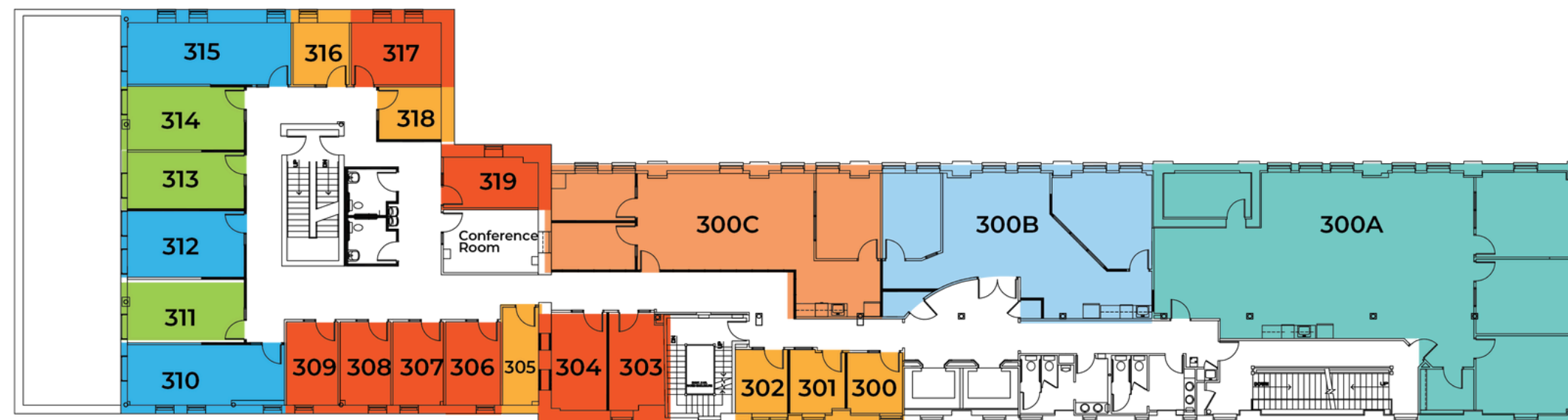
Shockoe Slip

11 S. 12th St., Richmond, VA

1ST FLOOR



3RD FLOOR



1-2 person office 3-4 person office 5-6 person office 7-9 person office



Shockoe Slip

11 S. 12th St., Richmond, VA

5TH FLOOR



■ 1 person office ■ 1-2 person office ■ 3-4 person office ■ 5-6 person office ■ 7-9 person office

■ 500A = 734 SF ■ 500B = 2,316 SF



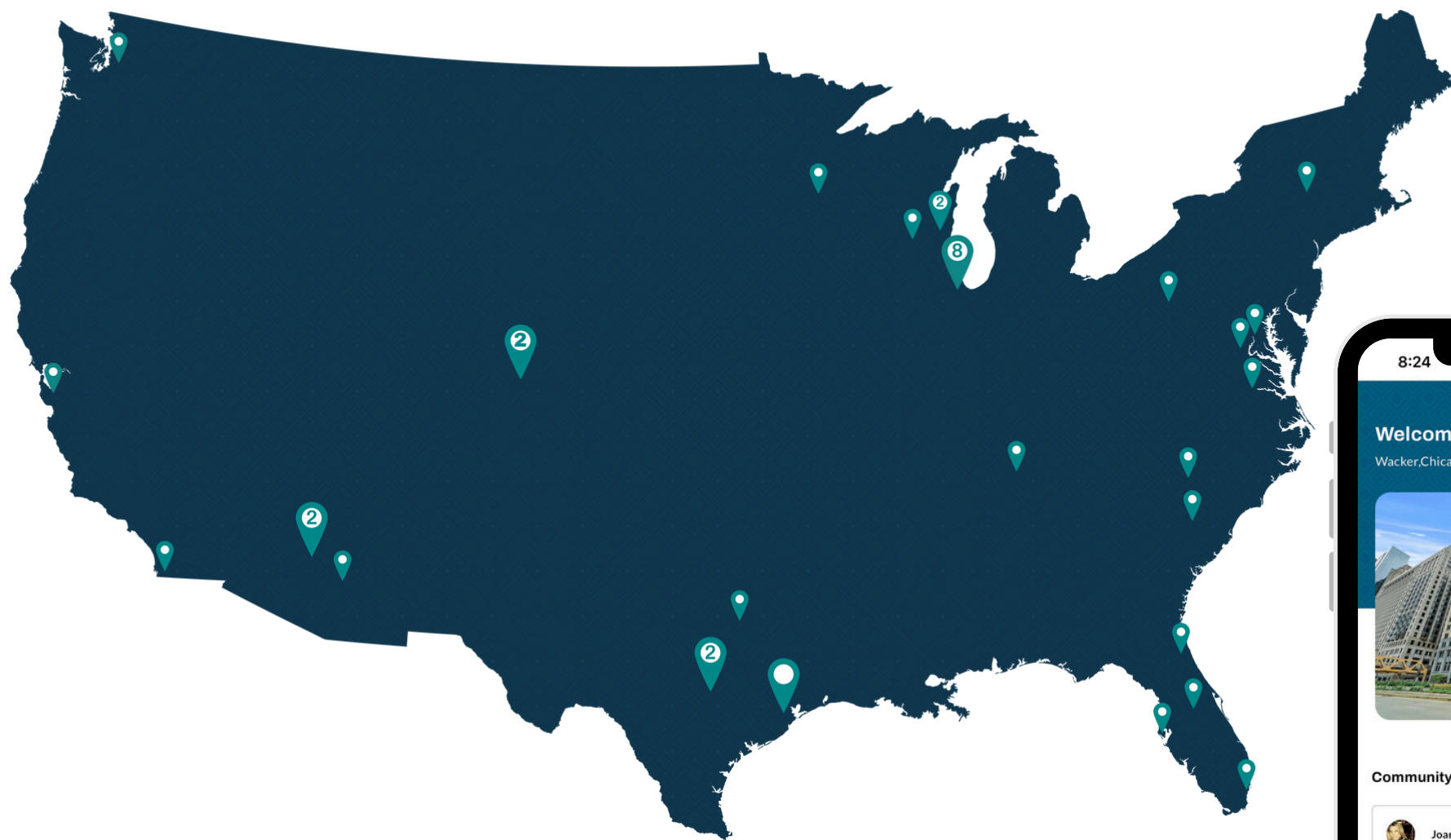
Why Expansive?

At Expansive, we own the buildings we develop and operate. This allows us to share the incomparable advantages of a fully-integrated, nationwide property owner with our clients, including our four cornerstones of workspace success:

- 1 Maximum Productivity**
To deliver on your potential
- 2 Vibrant Community**
To foster community and build relationships
- 3 Unparalleled Flexibility**
To realize your vision even as it evolves
- 4 Unwavering Stability**
To establish confidence in an uncertain world

Membership Includes:

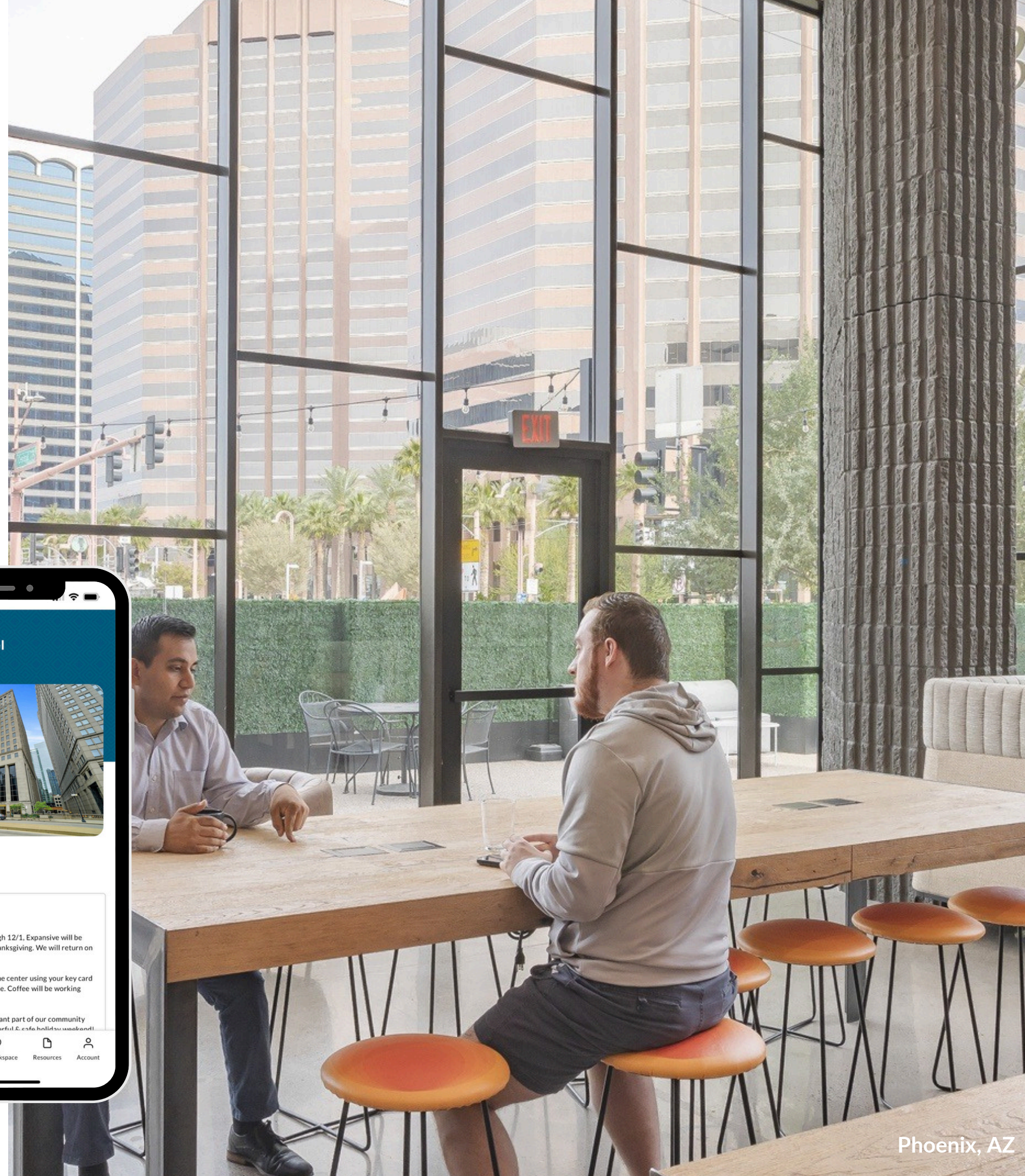
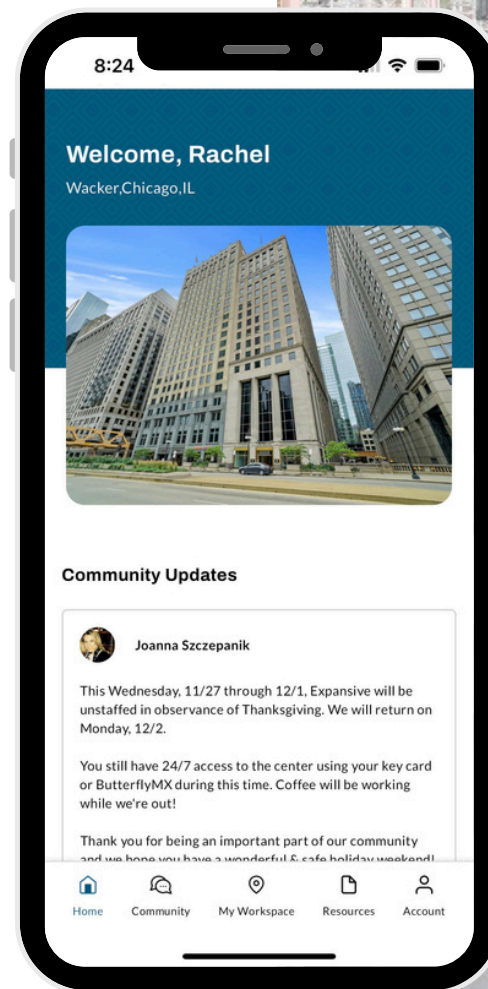
Access to All Locations



25+
Cities

3.8M
SF

40+
Locations



Phoenix, AZ

Building Amenities



FULLY
FURNISHED



DIRECT FIBER
INTERNET & WIFI



EXPANSIVE
LOUNGE



ESPRESSO
BAR



ENHANCED
CLEANING



SOCIALLY
DISTANCED
WORKSTATIONS



TOUCHLESS
FAUCETS &
RESTROOMS



UTILITIES



24/7 ACCESS



ON-SITE
MGMT



HIGH SPEED
PRINTERS



MEMBER
DIRECTORY



MOTHERS'
ROOM



COMMUNITY
APP



BIKE ROOM



NETWORK
LOUNGE ACCESS





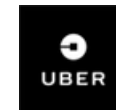
Enterprise Clients We Serve



NETFLIX



The
New York
Times



HomeAway



monster
Find Better.™

AVAYA



coinbase



Aflac

Lenovo



WIPFLI
CPAs and Consultants



Workspace Options for Customized Solutions

[Learn More](#)

Dedicated Space

- Team Suites
- Private Offices
- Access Pass



Shared Space

- Dedicated Desk
- Coworking Membership



On-Demand Space

- Conference Rooms
- Day Office
- Lounge Access



Virtual Office

- Virtual Office

Expansive Team Suites Provide Room to Grow

Multi-room Team Suites for 10 to 500 people are delivered fully furnished and move-in ready. Our in-house experts can help customize to meet specific needs. Team Suites feature open floor plans with:

- Dedicated kitchen with bar top seating
- A combination of open space and private offices
- Private conference room with smart TV monitor and blue board
- Turnkey technology package with high-speed fiber internet and Alexa-enabled sound system
- Biometric private entry to your suite and keyless building entry for secure 24/7 access
- And much more

[Learn More](#)

Go Beyond Workspace



Many centers also offer additional service options for an end-to-end experience
Corporate Meeting & Event Space • Storage • Parking



What Happens Next?

We invite you to proceed in two simple steps.

1 Choose your solution

Act now to avoid disappointment. We operate on a first-come, first-served basis.

2 Easy online sign up

Once you've chosen your preference option, we'll send you a one-page agreement, which is just one click to sign.

Further questions? Please contact us if we haven't given you the right solution here. Talk to us. Other options are available.

Contact Us:

sales@expansive.com | 877.301.6217