



REMAX[®] JUST LISTED

V/L O'Neill Boulevard, Sheffield, OH

Presented by
Amanda Shafer
Associate

RE/MAX Trends Realty

V/L O'Neill Boulevard

Unlock the potential of this 9.5-acre vacant piece of land ideally situated in a high-traffic retail corridor in Sheffield Township. Zoned Shopping Center District (S-C) which also accommodates the General Business District (GB-1), this flat, wooded property offers a strategic location for a wide range of commercial development projects. Featuring 664' of frontage on O'Neill Blvd, the site sits directly across from established national and regional retailers including Apples Market, Marc's, and Dollar General, ensuring high visibility and steady customer traffic. All major utilities are available at the street, including public water, public sewer,...



Amanda Shafer
Associate
330.324.7454 (cell)
234.251.0555 (office)
Amanda.Shafer@remax.net
<https://amanda-shafer.remax.com>
License# 2019000744 OH

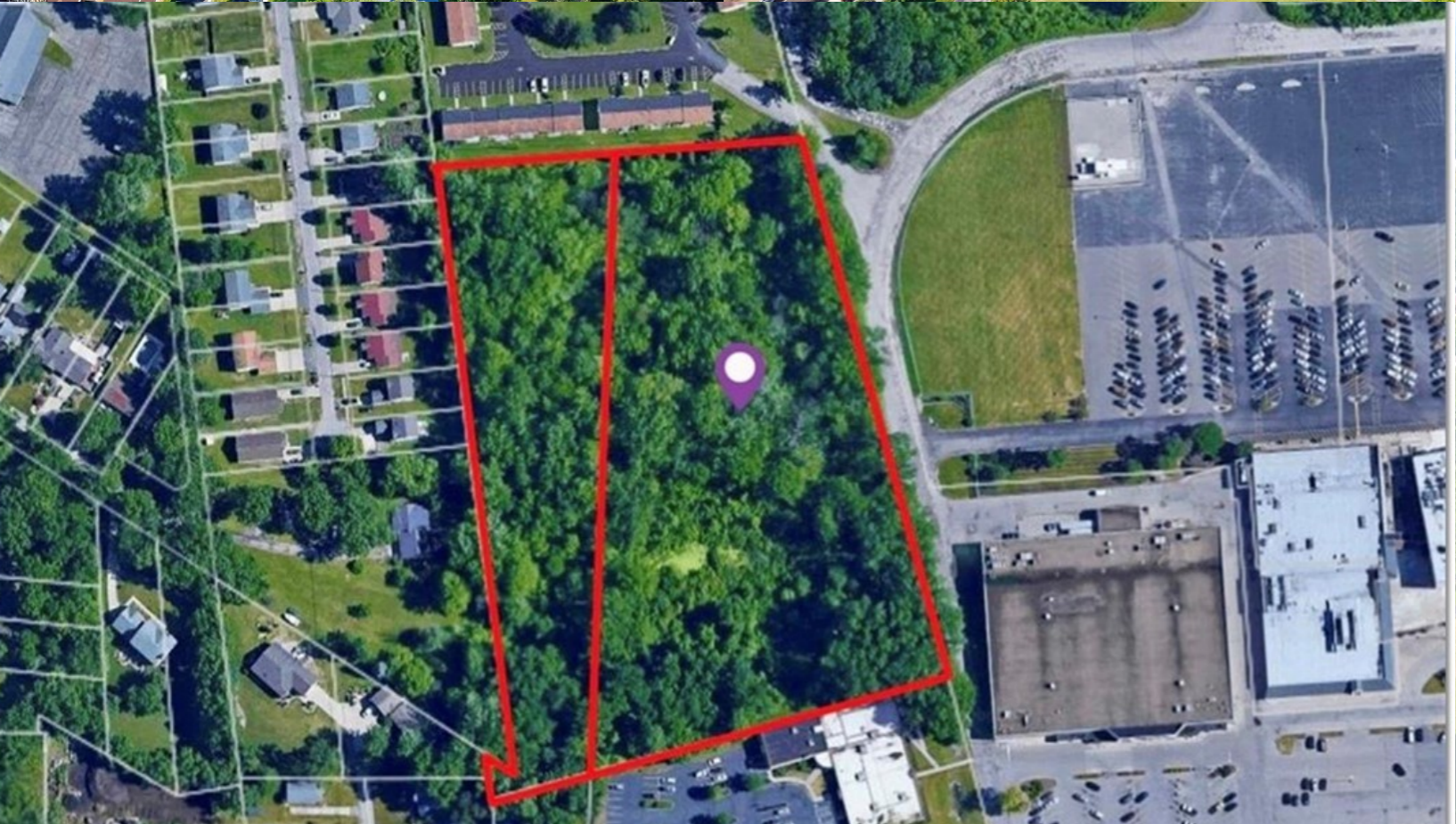
RE/MAX Trends Realty

Uniontown, OH 44685

RE/MAX, LLC is an Equal Opportunity Employer and supports the Fair Housing Act and equal opportunity housing.
©2025 RE/MAX, LLC. Each Office Independently Owned and Operated. 23_394



Lot lines are approximate



9.5
ACRES

| **664'** |
FRONTAGE

S-C
ZONING

Offered at \$360,000

RE/MAX Trends Realty